

ANNEX 2

PRELIMINARY ANALYSIS OF IUCN RED DATA LIST INFORMATION ON SPECIES LISTED ON, AND COVERED BY CMS APPENDICES

Contents

APPENDIX I 2

 Conservation status 2

 Main threats affecting species listed on Appendix I 3

APPENDIX II 9

 Species listed in Appendix II 9

 Conservation status 9

 Population Trends 10

 Main threats affecting species listed on Appendix II 11

Species listed and covered under Appendix II. 16

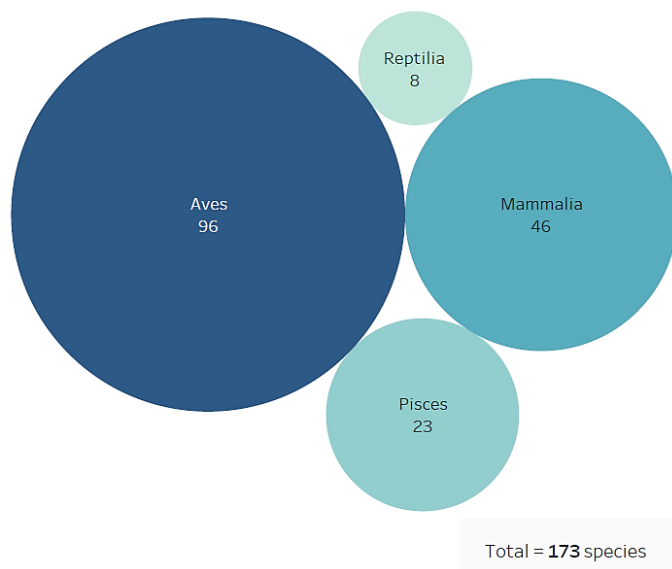
 Conservation status 16

 Population Trends 17

 Main threats affecting species listed and covered in Appendix II 18

APPENDIX I

Appendix I listed species by taxonomic group



CMS Appendix I includes 173 taxa at the species or sub-species levels, of which 46 mammals, 96 birds, 8 reptiles and 23 fishes. (Fig. 1)

Fig. 1 Species and subspecies listed on Appendix I by broad taxonomic category

Conservation status

IUCN Red List categories have been selected from the assessments of the global population of listed taxa, they do not consider the level of geographic population as indicated in Appendix I for some species. Of the species listed in Appendix I (Fig. 2), 38 (22%) are assessed as ‘Critically Endangered’; 47 (27%) as ‘Endangered’; 51 (29%) as ‘Vulnerable’; 13 (8%) as ‘Near Threatened’. Hence a total of 149 species, i.e. ca. 86% of all migratory species in Appendix I, can be considered as being of significant global concern. Of the remaining 24 species, 16 (9%) are assessed as ‘Least Concern’; 2 (1%) as ‘Data Deficient’; one (<1%) as ‘Extinct in the wild’. For 5 species (3%) no assessment is available in the Red List database and are classified in this analysis as ‘Species not assessed’.

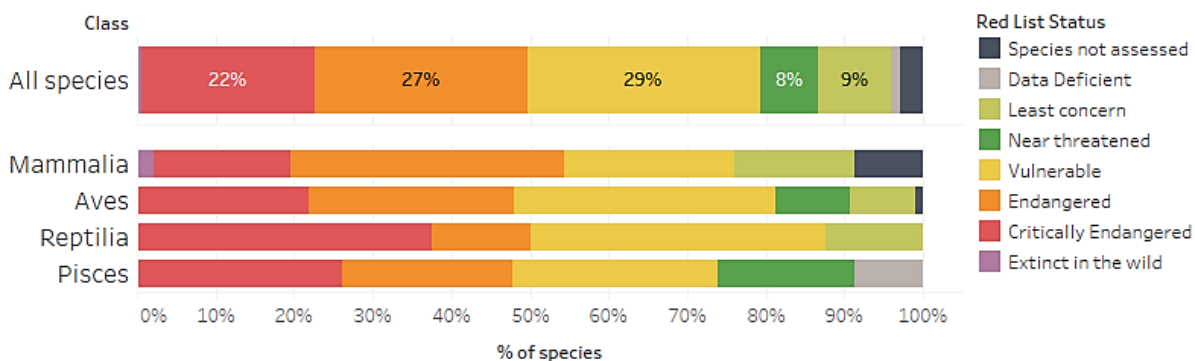


Fig. 2 Percentage of species listed on Appendix I in IUCN Red List Categories

According to the CMS Guidelines for assessment of Appendix I and II listing proposals, a taxon assessed as ‘Extinct in the Wild’, ‘Critically Endangered’, or ‘Endangered’ using the IUCN Red List criteria is eligible for consideration for listing in Appendix I, recognizing that CMS Appendix I species are broadly defined as ‘endangered’ (Fig. 3). Of the species currently listed on Appendix I, 86 (50%) meet the current criteria for listing on the Appendix.



Fig. 3 Percentage of species listed in Appendix I meeting the criteria for listing defined in Res.11.33 (Rev.COP12)

Population Trends

Population trends categories have been selected from the assessments of the global population of listed taxa, they do not consider the level of geographic population as indicated in Appendix I for some species. The current population trend for 128 species (74%) listed on Appendix I is ‘Decreasing’ (Fig. 4); for 14 species (8%) is ‘Increasing’; for 9 species (5%) is ‘Stable’; for 15 species (9%) is ‘Unknown’, for 2 species (1%) is ‘Unspecified’. For 5 species (3%) no information on population trends were found in the Red List database and are classified in this analysis as ‘Species not assessed’.

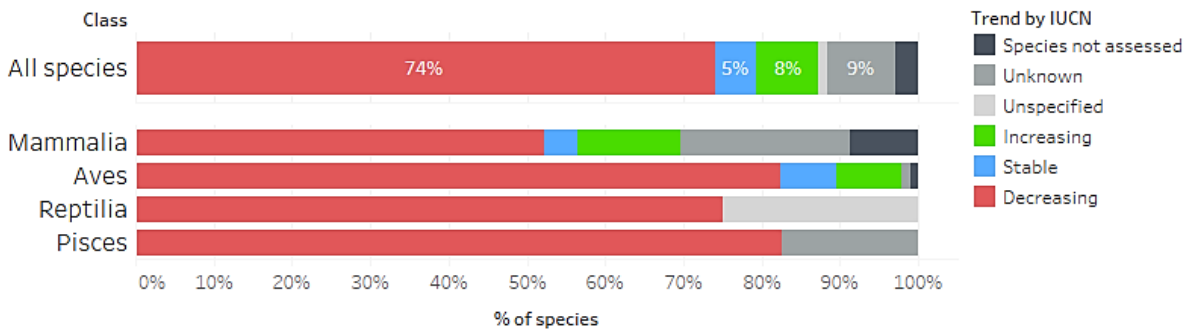


Fig. 4 Population trend of species listed in Appendix I

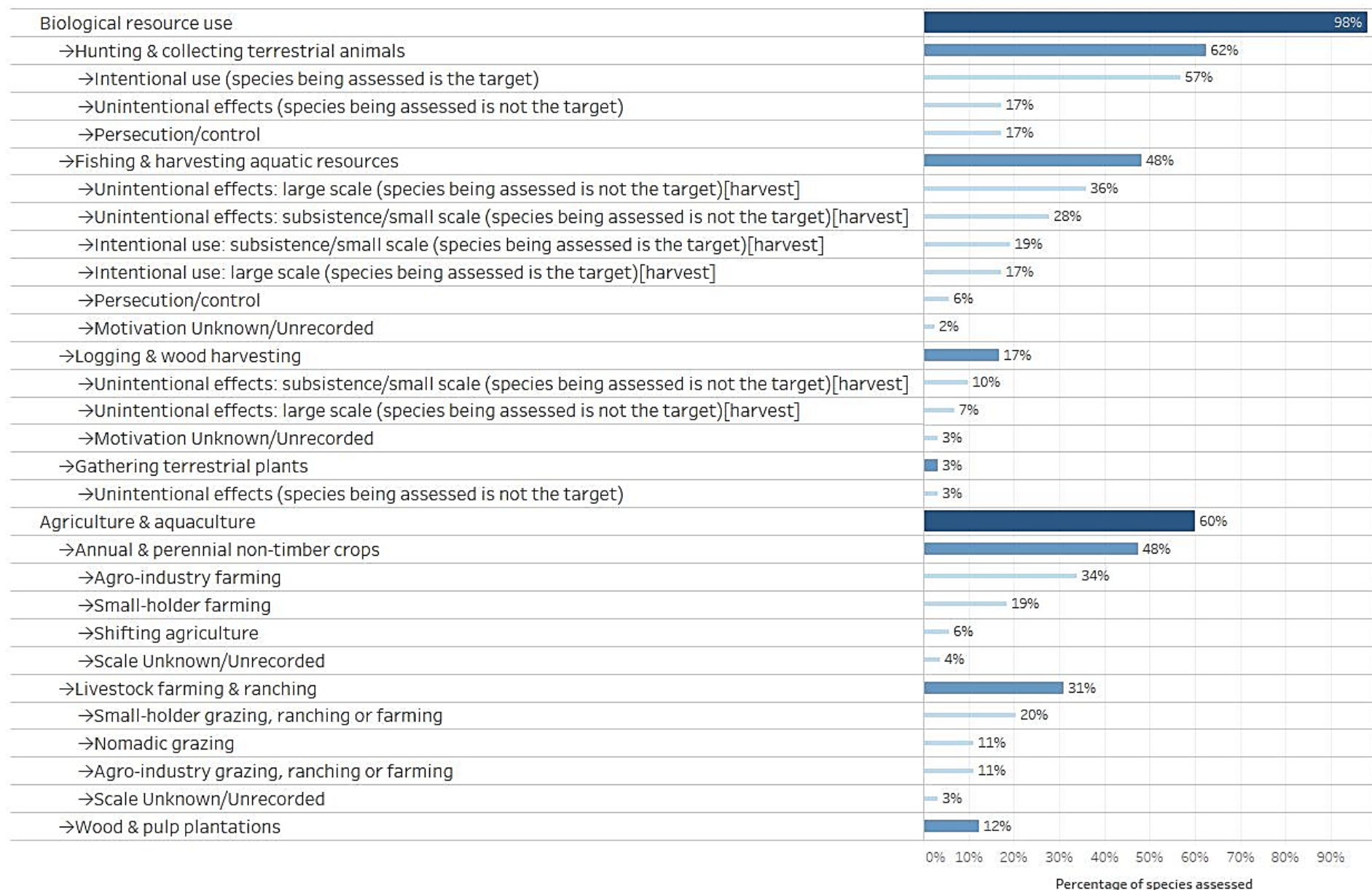
Main threats affecting species listed on Appendix I

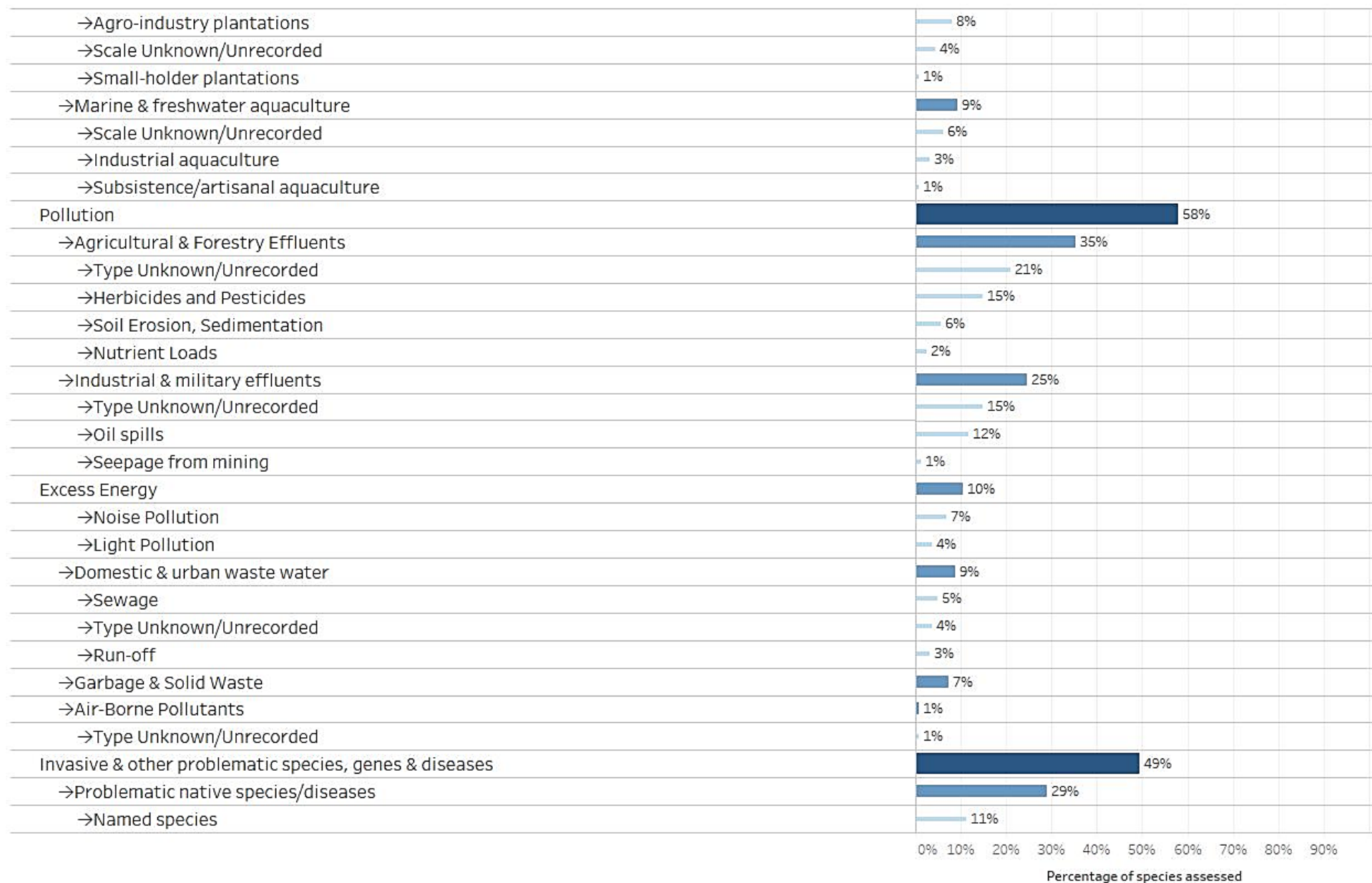
Threats as categorized and defined by the IUCN – CMP Unified Classification of Direct Threats have been extracted from Red List Assessments for Appendix I listed species whenever available¹. All three levels defined by the IUCN hierarchical classification scheme have been considered. A total of 162 species had information about threats available. Threat categories have been extracted from the assessments of the global population of listed taxa, they do not consider the level of geographic population as indicated in Appendix I for some species.

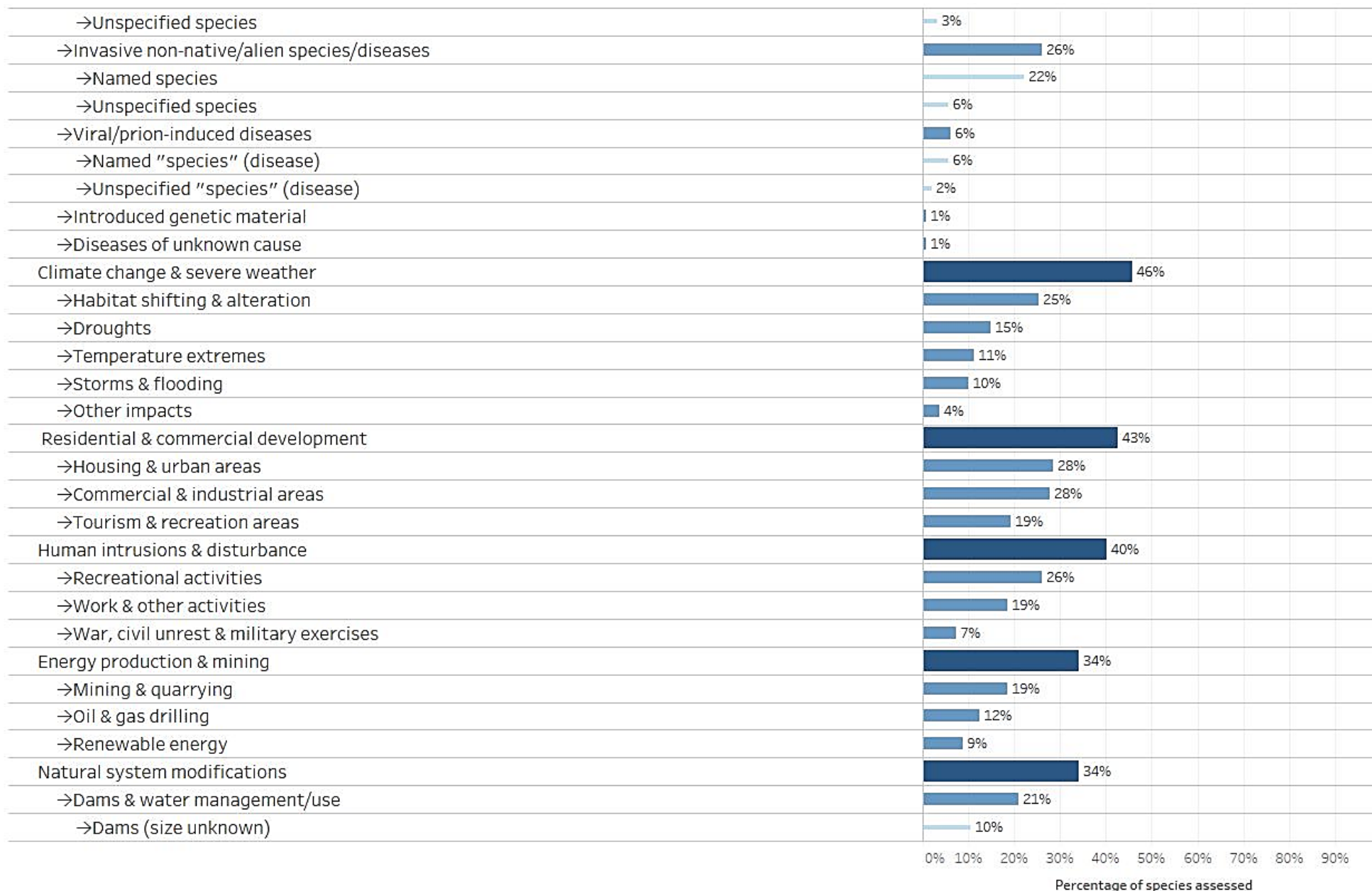
¹ According to the *Rules of Procedure for IUCN Red List Assessments 2017–2020*, codification for threats is not a required supporting information for all assessments, it is required only for taxa assessed as Extinct, Extinct in the Wild, Critically Endangered, Endangered, Vulnerable, and Near Threatened.

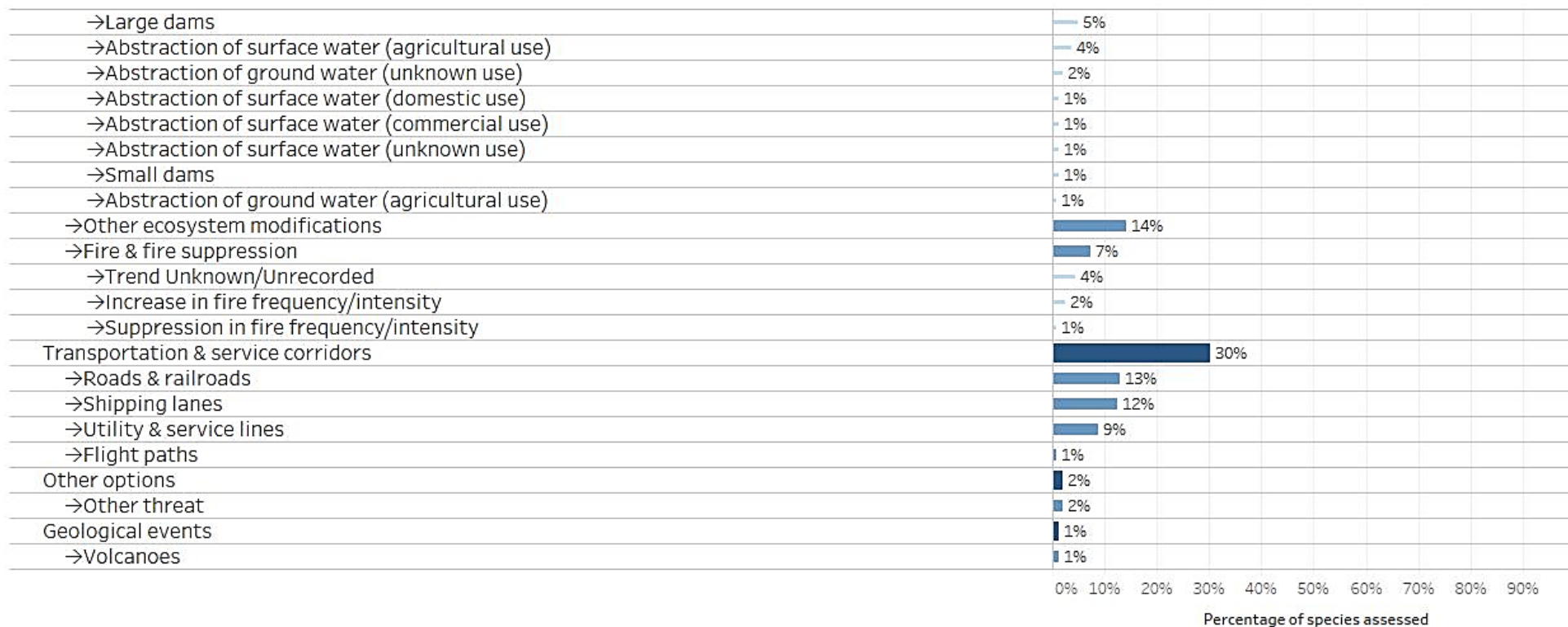
Fig. 5 shows the percentage of species impacted by kind of threat. Biological resource use impacts 159 species (98%); agriculture is affecting 97 species (60%); pollution 94 species (58%); invasive species 80 species (49%); climate change 74 species (46%).

Fig 5. Percentage of species listed on Appendix I impacted, by kind of threat.



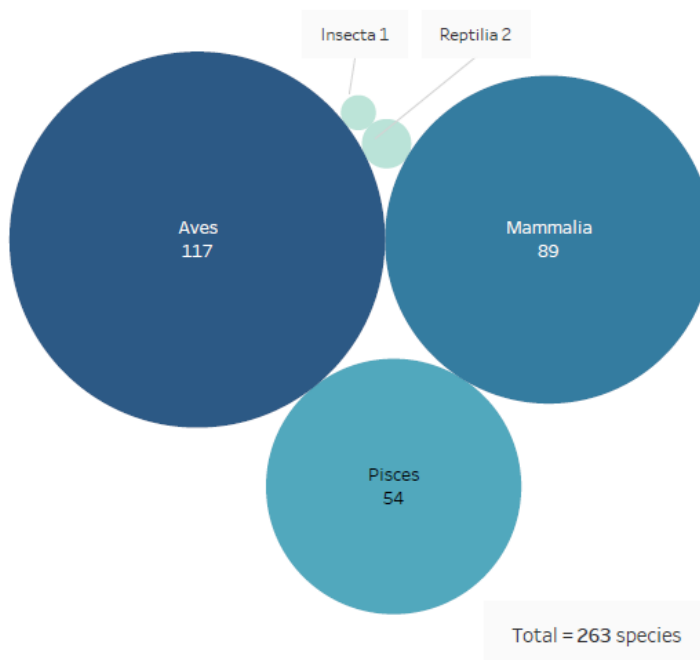






APPENDIX II

Species listed on Appendix II by taxonomic group



CMS Appendix II includes 263 taxa at the species or sub-species levels, of which 89 mammals, 117 birds, 2 reptiles, 54 fish and 1 insect. (Fig.6)

Fig 6. Species and subspecies listed on Appendix II by broad taxonomic category

Conservation status

IUCN Red List categories have been selected from the assessments of the global population of listed taxa, they do not consider the level of geographic population as indicated in Appendix II for some species. Of the 263 species listed on Appendix II, 26 (10%) are assessed as ‘Critically Endangered’; 28 (11%) as ‘Endangered’; 57 (22%) as ‘Vulnerable’; 31 (12%) as ‘Near Threatened’. Hence a total of 142 species could be considered as being of significant global concern. Of the remaining 121 species, 85 (32%) are assessed as ‘Least Concern’; 12 (5%) as ‘Data Deficient’; 1 (<1%) as ‘Extinct in the Wild’; 1 species (insect) was considered ‘Not Applicable’ to the assessment process. For 22 species (8%) no assessment is available in the Red List database and are classified in this analysis as ‘Species not assessed’.

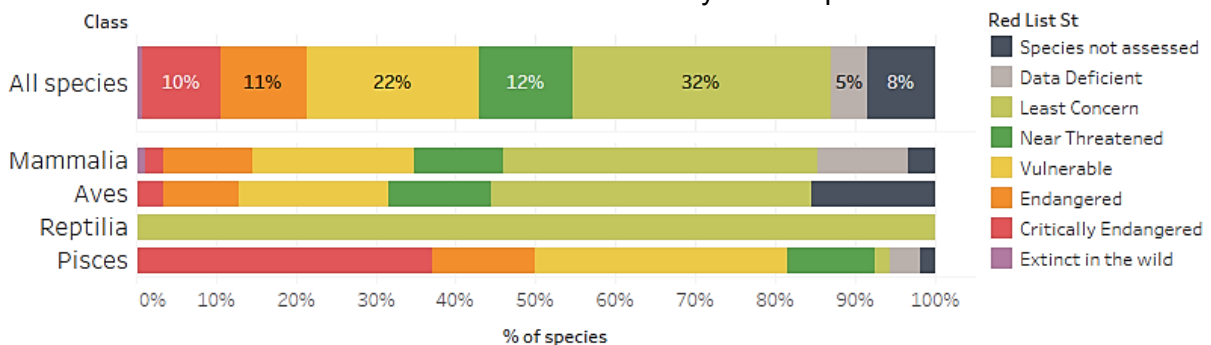


Fig. 7 Percentage of species in IUCN Red List Categories listed on Appendix II

According to the CMS Guidelines for assessment of Appendix I and II listing proposals, a taxon assessed as ‘Extinct in the Wild’, ‘Critically Endangered’, ‘Endangered’, ‘Vulnerable’ or ‘Near Threatened’ using the IUCN Red List criteria is eligible for consideration for listing on Appendix II, recognizing that such taxa meet the definition of ‘unfavourable conservation status’ under the Convention. A taxon assessed as ‘Data Deficient’ should be evaluated in terms of the merit of any individual Appendix II proposal. Of the species currently listed on Appendix II, 155 (59%) can meet the criteria for listing on the Appendix.



Fig.8 Percentage of species listed in Appendix II meeting the criteria for listing defined in Res.11.33 (Rev.COP12)

Population Trends.

Population trends categories have been selected from the assessments of the global population of listed taxa, they do not consider the level of geographic population as indicated in Appendix I for some species. The current population trend for 126 species (48%) listed on Appendix II is ‘Decreasing’ (Fig. 11); for 27 species (10%) is ‘Stable’; for 20 species (8%) is ‘Increasing’; for 64 species (24%) is ‘Unknown’; for 3 species (1%) is ‘Unspecified’. For 22 species (8%) no information on population trends were found in the Red List database and are classified in this analysis as ‘Species not assessed’.

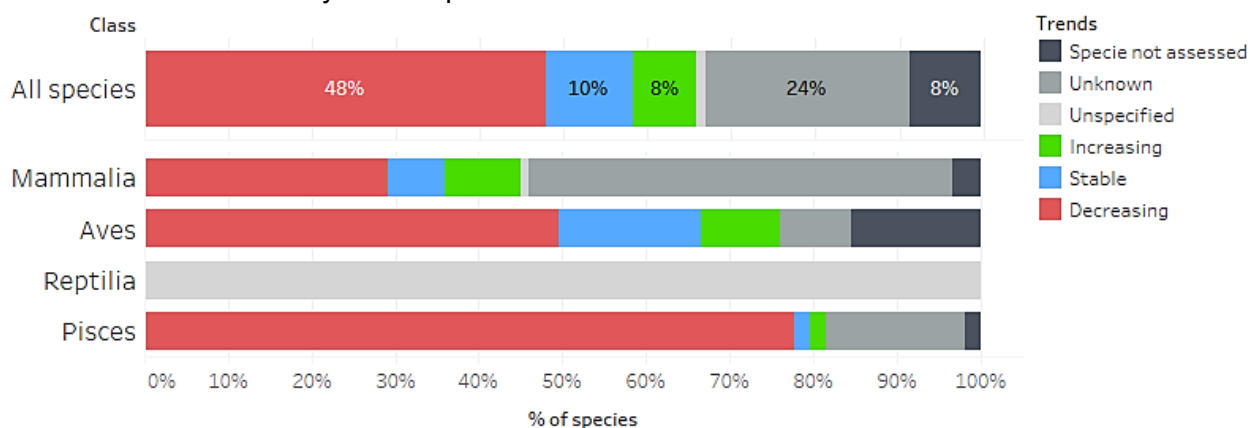


Fig 9. Population trend of species listed in Appendix II

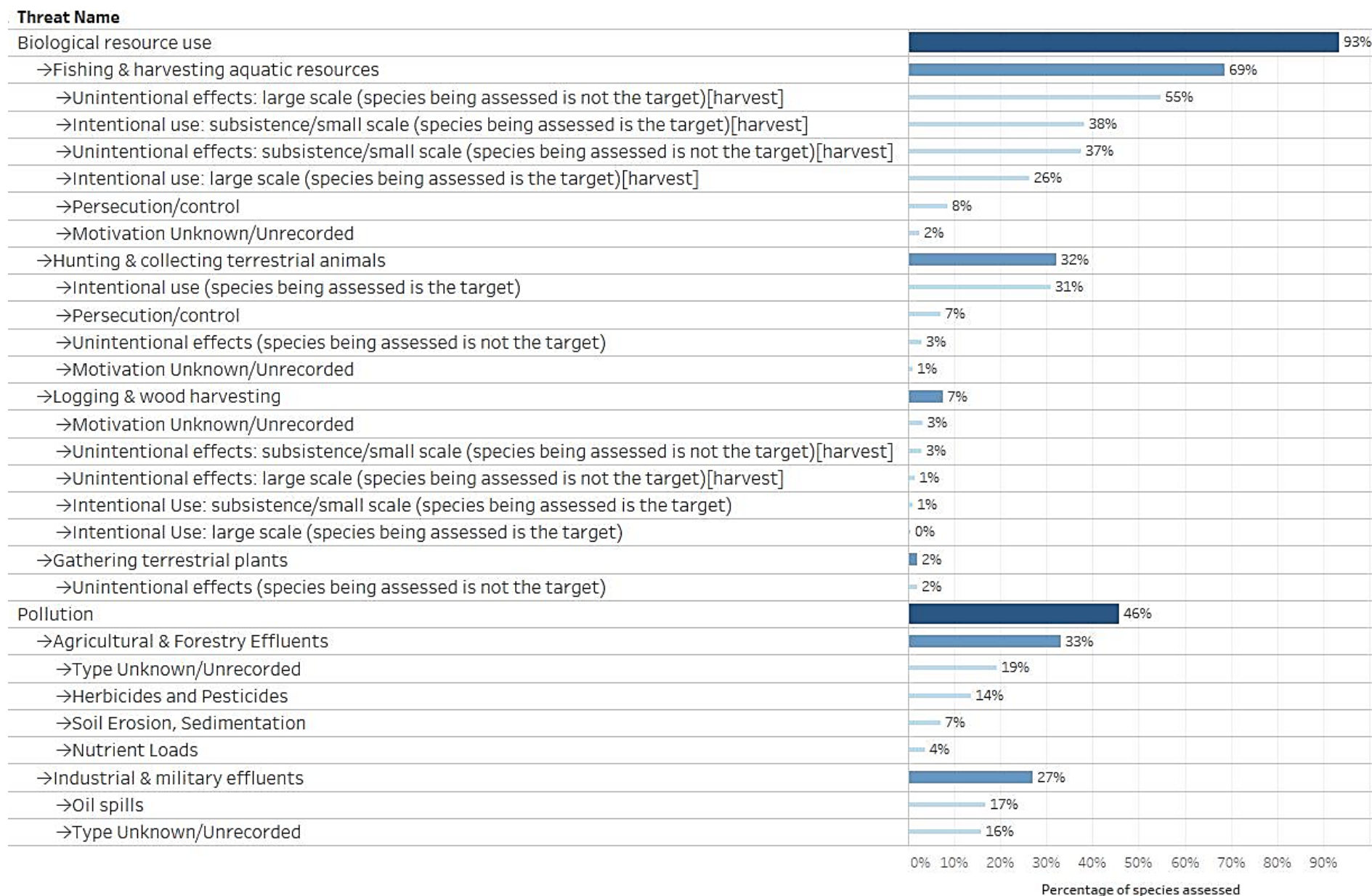
Main threats affecting species listed on Appendix II

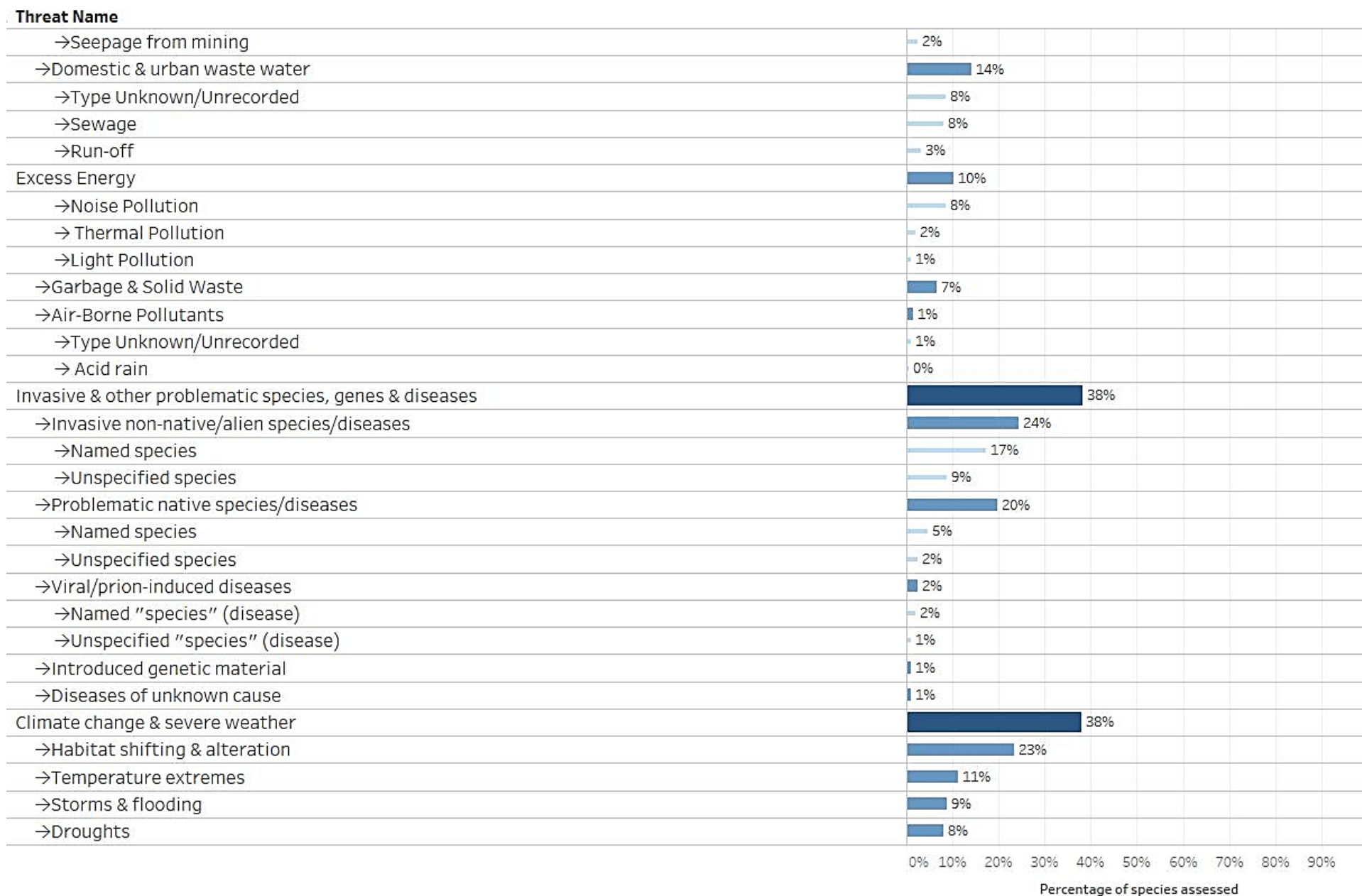
Threats as categorized and defined by the IUCN – CMP Unified Classification of Direct Threats have been extracted from Red List Assessments for Appendix II listed species whenever available². All three levels defined by the IUCN hierarchical classification scheme have been considered. A total of 214 species had information about threats available. Threat categories have been extracted from the assessments of the global population of listed taxa, they do not consider the level of geographic population as indicated in Appendix II for some species.

Figure 10 shows the percentage of species impacted by kind of threat. Biological resource use impacts 200 species (93%); pollution is affecting 98 species (46%); invasive & other problematic species, genes and diseases 82 species (38%); climate change & severe weather 81 species (38%); the modification of natural systems, which is, the changes to natural processes such as fire, hydrology and sedimentation affects 69 species (32%).

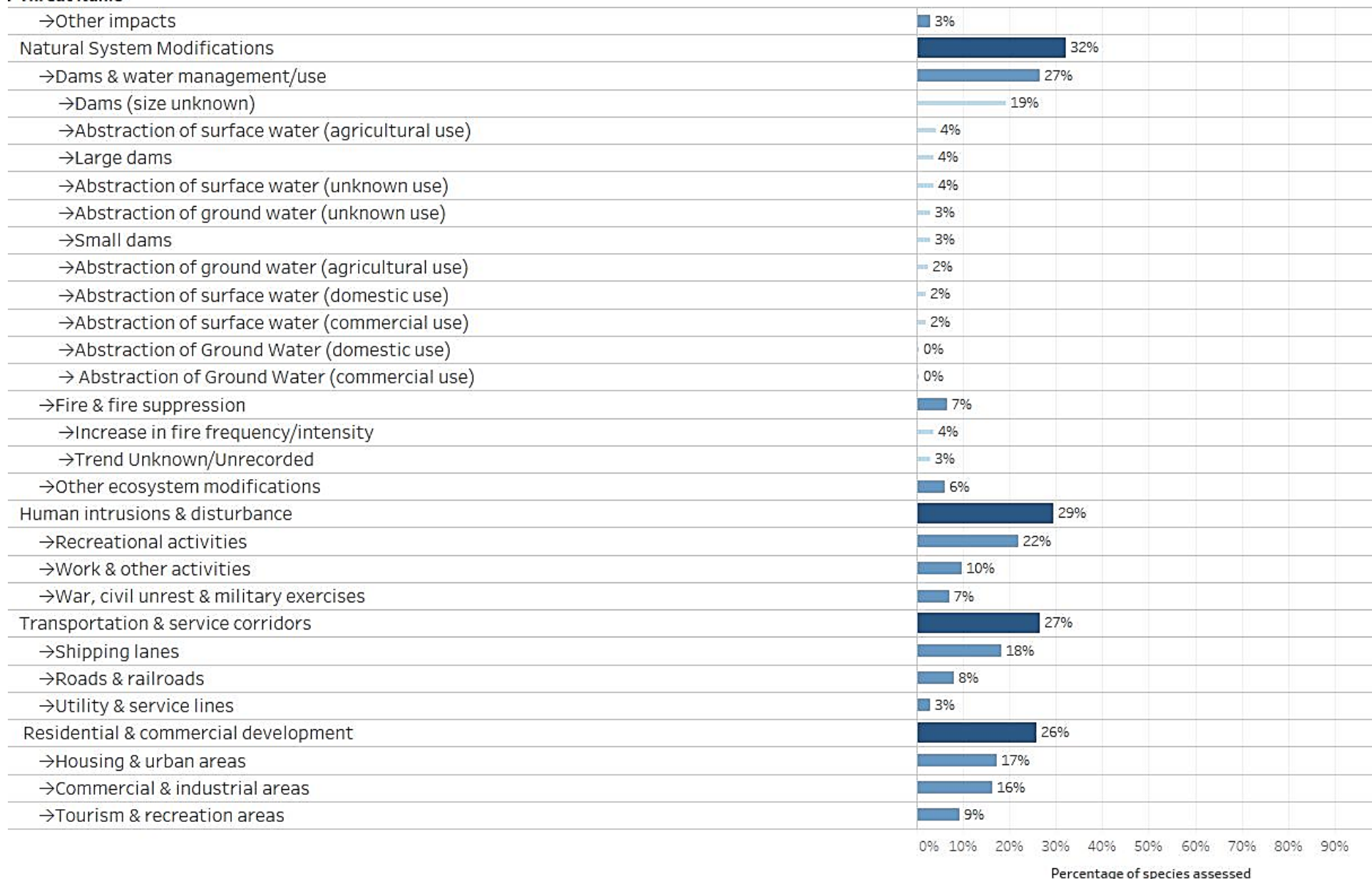
Fig. 10 Percentage of species listed on Appendix II impacted, by kind of threat

² According to the *Rules of Procedure for IUCN Red List Assessments 2017–2020*, codification for threats is not a required supporting information for all assessments, it is required only for taxa assessed as Extinct, Extinct in the Wild, Critically Endangered, Endangered, Vulnerable, and Near Threatened.

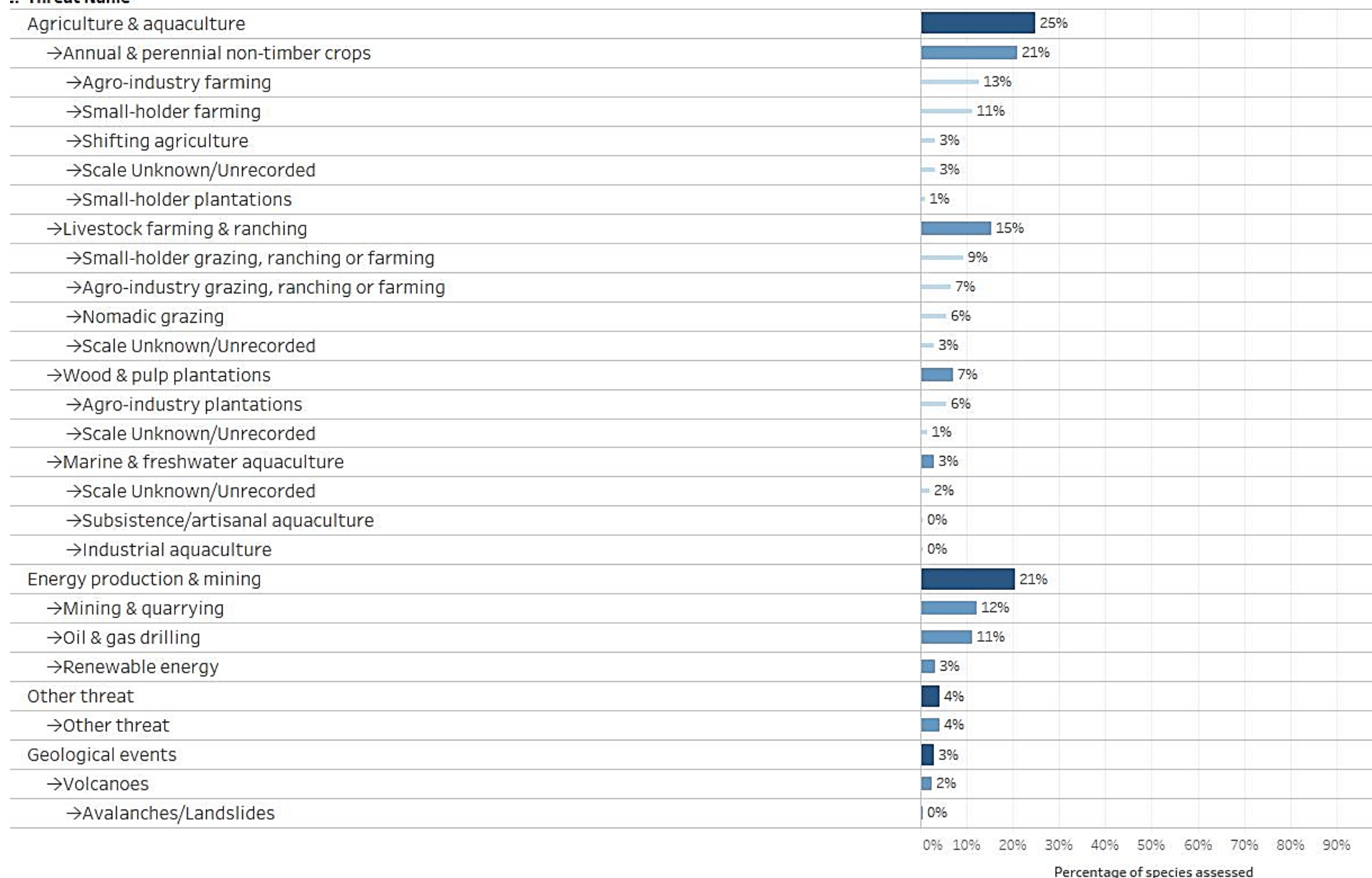




. Threat Name



:: Threat Name



Species listed and covered under Appendix II by taxonomic group

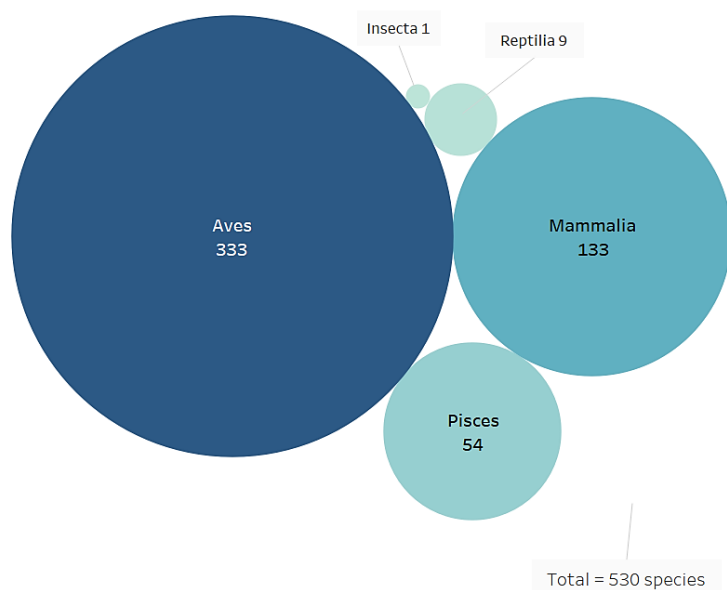


Fig. 11 Species listed and covered under Appendix II by broad taxonomic category

In addition to taxa at the species and subspecies levels, Appendix II lists 2 mammal families, 63 bird families, 3 bird genera and 2 reptile families. A conservative selection of the species covered under the families and genera listed was made, considering covered those species included in a CMS Art. IV Agreement and/or included also on Appendix I.

The two families of mammals contained in Appendix II are bats of the order Chiroptera. Species covered by the EUROBATS Agreement were considered covered by the families, with the exclusion of those species endemic to a single country.

The disaggregation of the bird families and genera used data from the Handbook of the Birds of the World.

A total of 267 species were selected, of which 115 are included in AEWA, 79 in the Raptors MOU, 44 in the EUROBATS Agreement, 27 in CMS Appendix I, 1 in the IOSEA MOU and 1 in the Aquatic Warbler MOU

In total, 530 species are listed and covered under Appendix II, of which 133 mammals, 333 birds, 9 reptiles, 54 fish and 1 insect (Fig. 11)

Conservation status

IUCN Red List categories have been selected from the assessments of the global population of listed taxa, they do not consider the level of geographic population as indicated in Appendix II for some species. Of the 530 species listed and covered under Appendix II, 41 (8%) are assessed as 'Critically Endangered'; 44 (11%) as 'Endangered'; 86 (16%) as 'Vulnerable'; 56 (11%) as 'Near Threatened'. Hence a total of 227 species (43%) of all species listed or covered under Appendix II could be considered as being of significant global concern. Of the remaining 303 species, 259 (49%) are assessed as 'Least Concern'; 17 (3%) as 'Data Deficient'; one (<1%) as 'Extinct in the Wild'; 1 species (insect) was considered 'Not Applicable' to the assessment process. For 25 species (5%) no assessment is available in the Red List database and are classified in this analysis as 'Species not assessed'.

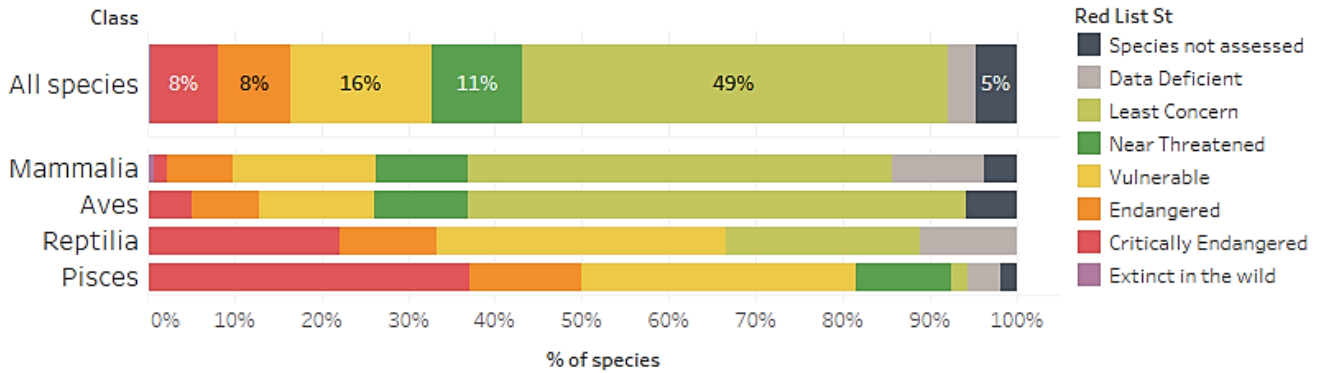


Fig. 12 Percentage of species in IUCN Red List Categories listed and covered in Appendix II

Of the 530 species listed and covered under Appendix II, 245 species (46%) can meet the definition of ‘unfavourable conservation status’ (Fig. 13).

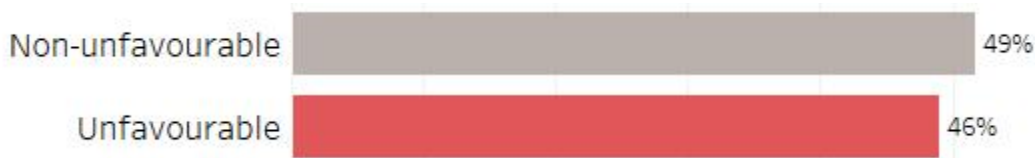


Fig. 13 Percentage of species listed and covered under Appendix II meeting the criteria for listing on Appendix II defined in Res.11.33 (Rev.COP12)

Population Trends.

Population trends categories have been selected from the assessments of the global population of listed taxa, they do not consider the level of geographic population as indicated in Appendix I for some species. The current population trend for 261 species (49%) listed and covered under Appendix II is ‘Decreasing’ (Fig. 14); for 75 species (14%) is ‘Stable’; for 52 species (10%) is ‘Increasing’; for 111 species (21%) is ‘Unknown’; for 5 species (1%) is ‘Unspecified’. For 25 species (5%) no information on population trends were found in the Red List database and are classified in this analysis as ‘Species not assessed’.

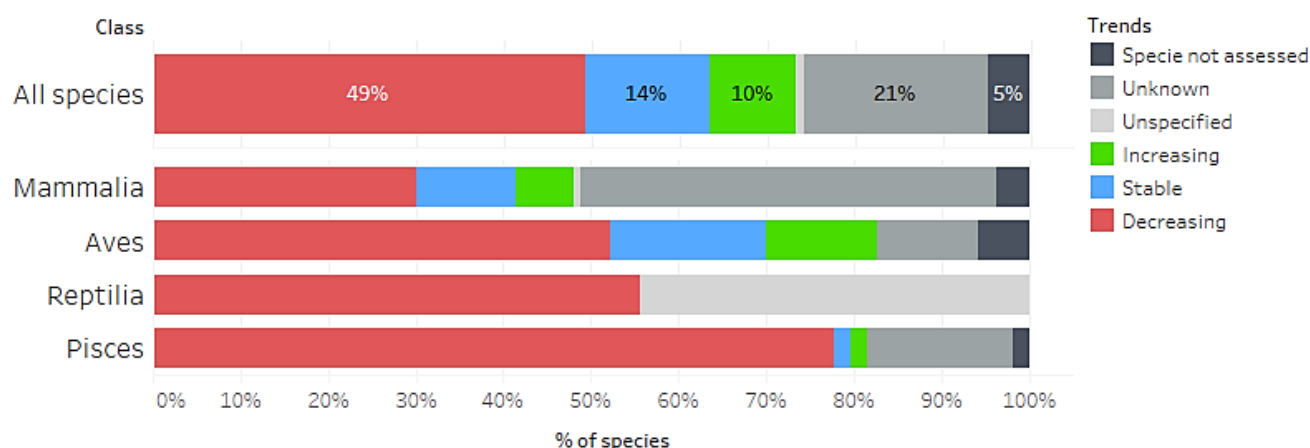


Fig. 14 Population trend of species listed and covered under Appendix II

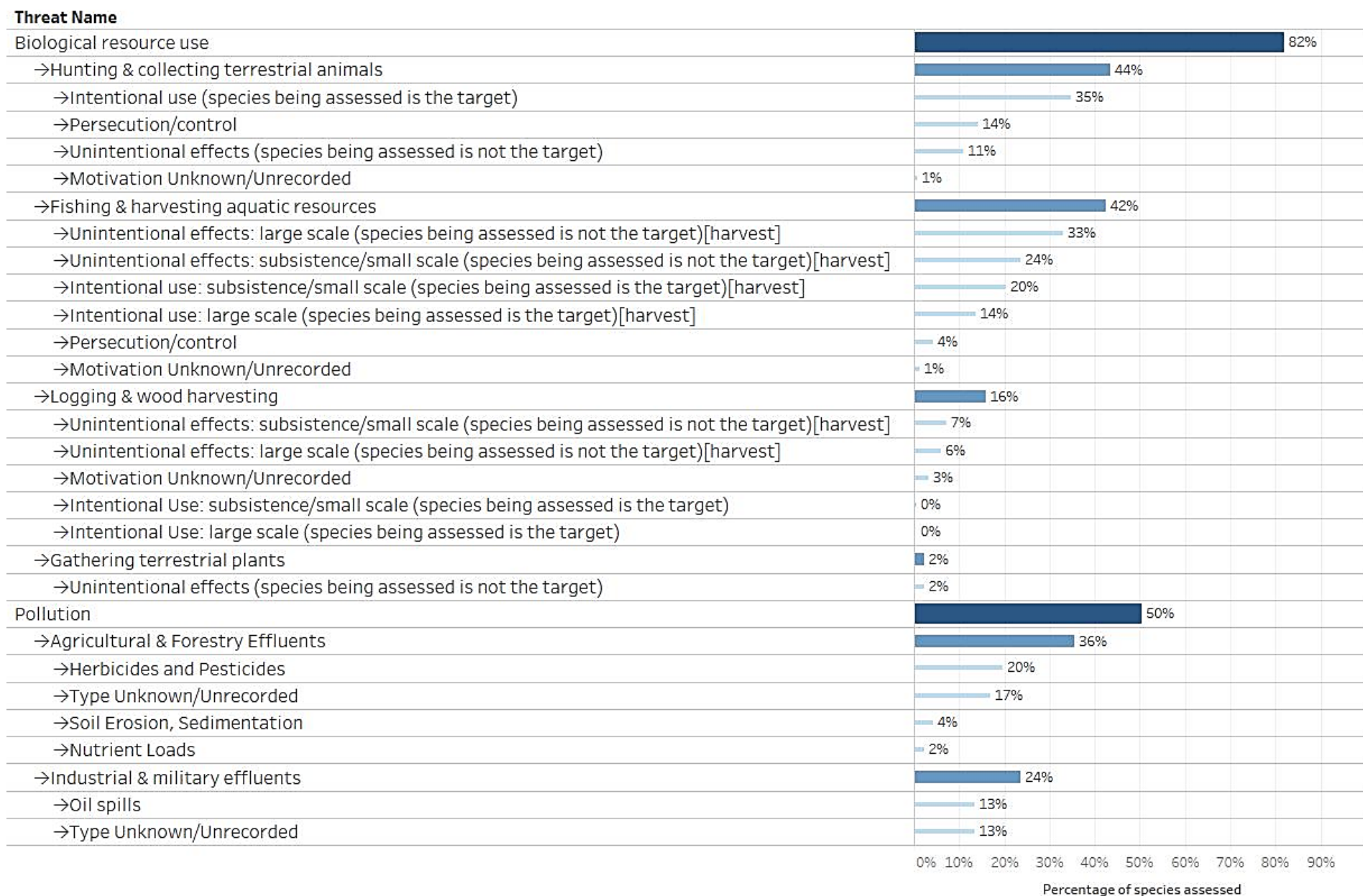
Main threats affecting species listed and covered in Appendix II

Threats as categorized and defined by the IUCN – CMP Unified Classification of Direct Threats have been extracted from Red List Assessments for Appendix II listed species whenever available³. All three levels defined by the IUCN hierarchical classification scheme have been considered. A total of 425 species had information about threats available. Threat categories have been extracted from the assessments of the global population of listed taxa, they do not consider the level of geographic population as indicated in Appendix II for some species.

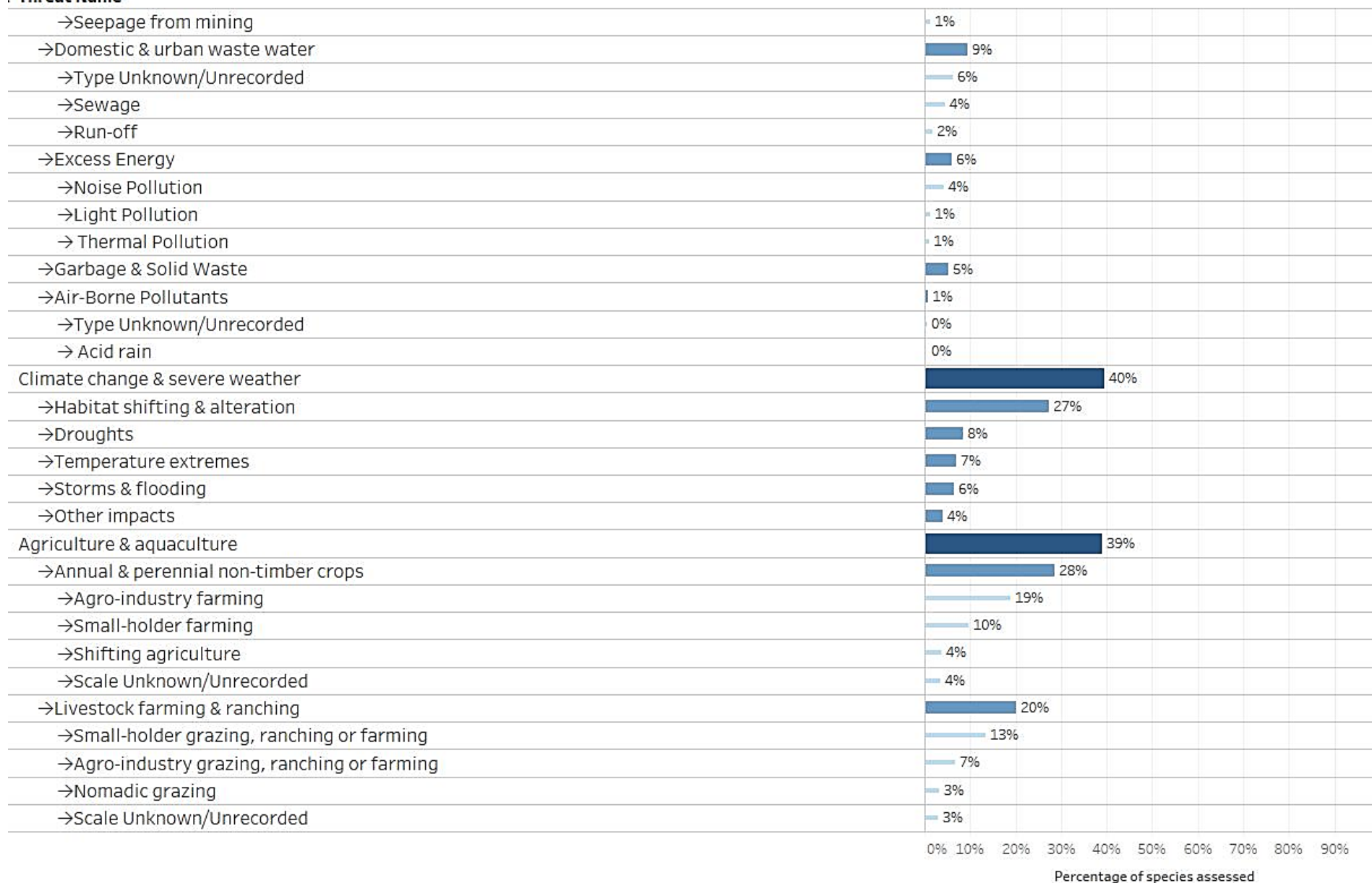
Figure 15 shows the percentage of species impacted by kind of threat. Biological resource use impacts 348 species (82%); pollution is affecting 214 species (50%); climate change 168 (40%); Agriculture & aquaculture 166 species (39%); and the modification of natural systems, which is, the changes to natural processes such as fire, hydrology and sedimentation affects 149 species (35%).

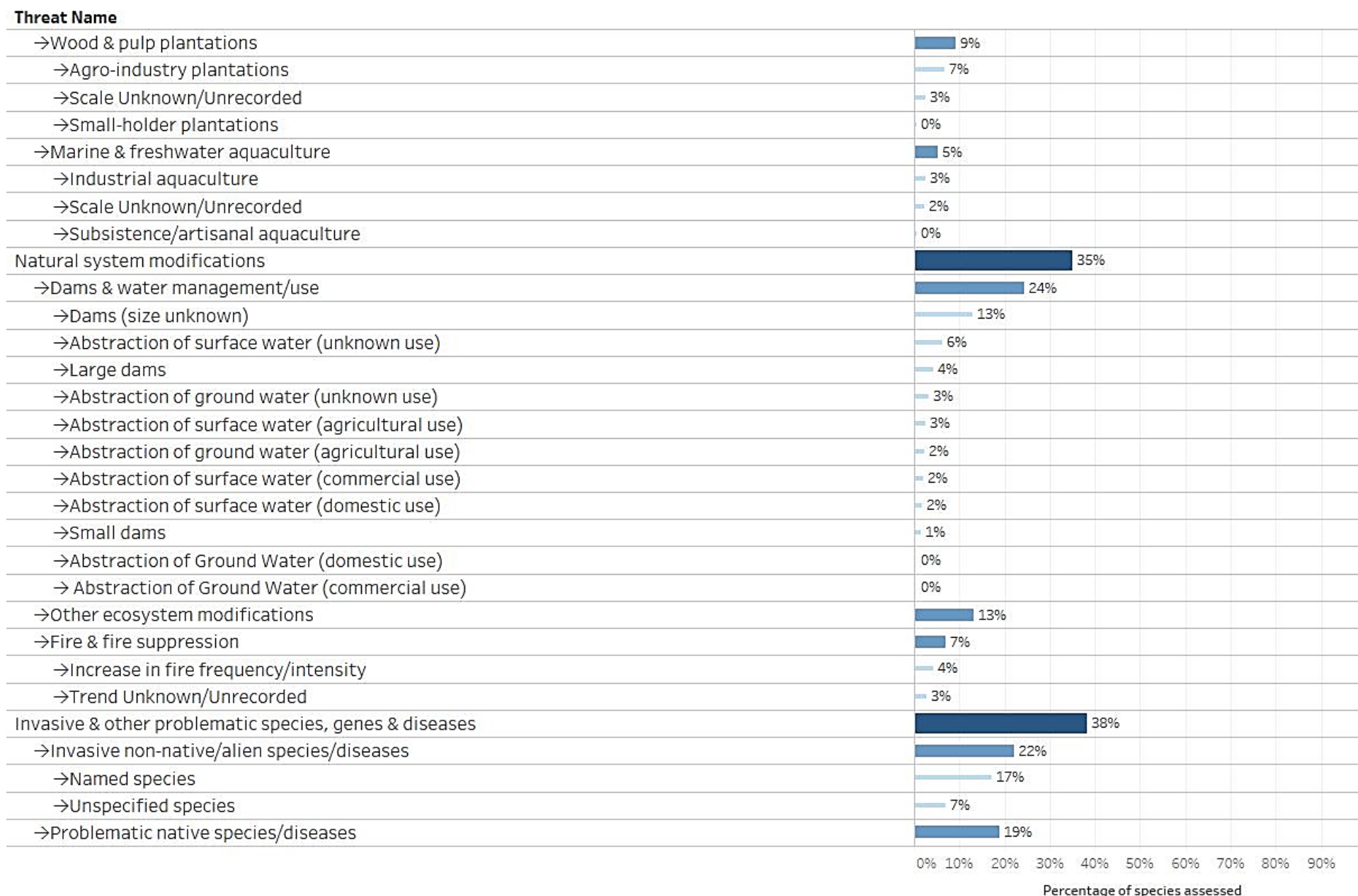
Fig. 15 Percentage of species listed and covered in Appendix II impacted, by kind of threat

³ According to the *Rules of Procedure for IUCN Red List Assessments 2017–2020*, codification for threats is not a required supporting information for all assessments, it is required only for taxa assessed as Extinct, Extinct in the Wild, Critically Endangered, Endangered, Vulnerable, and Near Threatened.



Threat Name





Threat Name

