

THE CMS ENERGY TASK FORCE:

SAFEGUARDING SPECIES IN ENERGY PLANNING



WHAT IS THE CMS ENERGY TASK FORCE?

The CMS Energy Task Force (ETF) was established under the Convention on the Conservation of Migratory Species of Wild Animals. It is a global and multi-disciplinary network working towards reconciling renewable energy development with the conservation of migratory species.



WHAT IS THE CMS ETF?

**RENEWABLE
GENERATION
CAPACITY WILL
HAVE TO MORE
THAN TRIPLE BY
2030 TO MEET
THE 1.5°C TARGET.**

Image © Thomas Richter

The ETF is spearheading the discussion on mainstreaming the conservation of migratory species across the energy sector, via innovative and responsible renewable energy solutions.

The ETF provides a forum for developing and disseminating best practice policy and technical guidance, and engagement of relevant stakeholders, including governments, investors, scientists, the private sector civil society, and multilateral actors.

BirdLife International, the world's largest nature conservation partnership, coordinates the ETF on behalf of the CMS Secretariat.





**CLIMATE CHANGE IS ONE OF THE
GREATEST THREATS TO PEOPLE
AND BIODIVERSITY.**

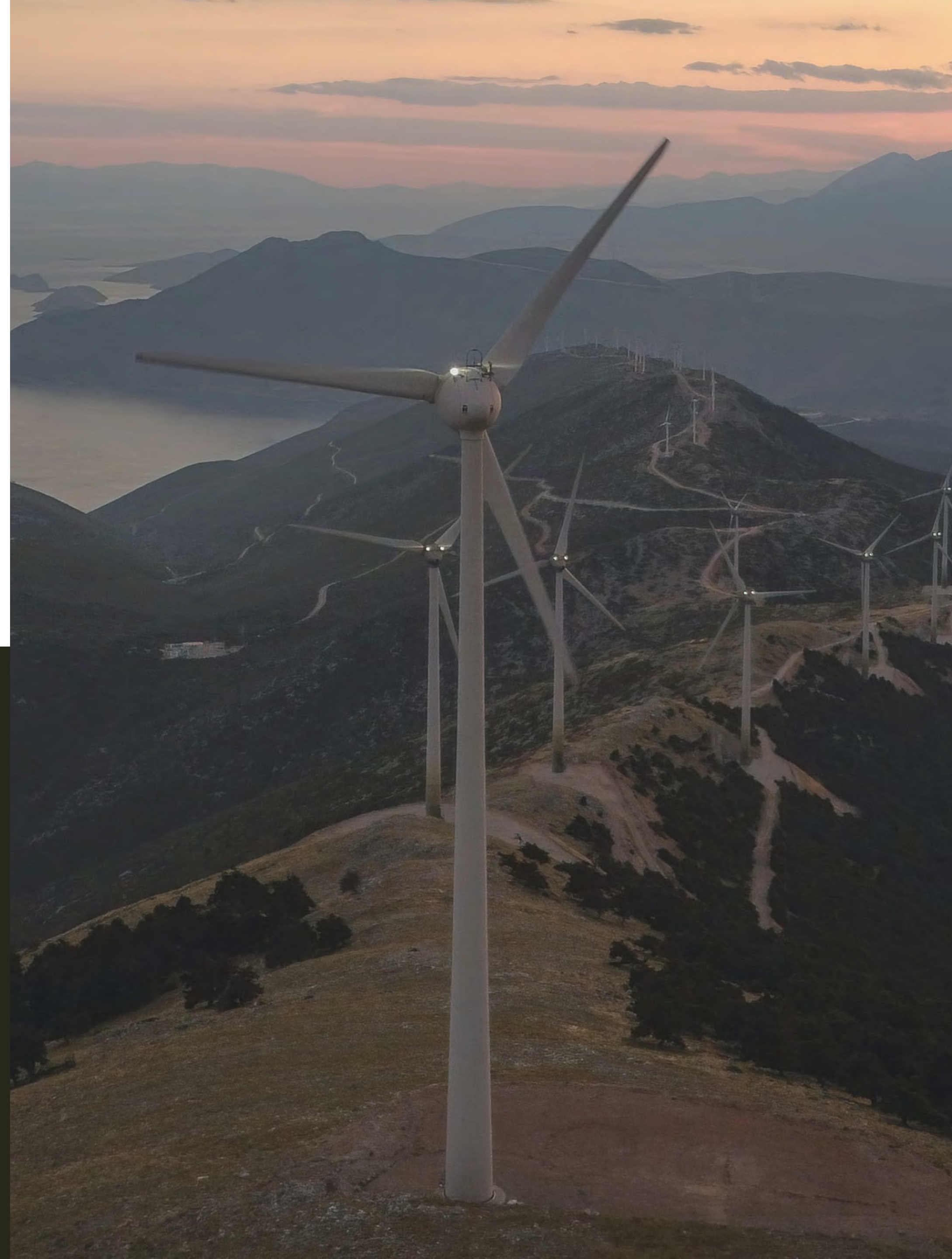
THE CHALLENGE

We know that climate change is already impacting the survival of most migratory species. A just and rapid transition to renewable energy is urgently needed to address the climate crisis and keep the 1.5°C goal within reach. **90%** of the world's electricity can and should come from renewable energy by **2050**. However, if not done well, renewables can exacerbate the biodiversity crisis.

THE CHALLENGE

If designed poorly and placed in sensitive areas, renewable energy developments can negatively impact migratory species, such as birds, bats and marine mammals, through disturbance and loss of habitat, the generation of noise pollution, collision, electrocution, and other indirect pressures. Available data reveals that hundreds of thousands of collisions occur in migratory flyways around the globe. Poorly sited infrastructure can also lead to significant financial and legislative challenges, including retrofitting costs, fines and lawsuits.

We must ensure impacts on biodiversity and people are being avoided and mitigated where renewables projects and electrification are taking place. We must also ensure the deployment of renewables aims for inclusiveness and serves the purpose of a just and equitable transition.



THE OBJECTIVES

To deliver easy to implement national and global solutions on reconciling renewable energy and biodiversity the ETF aims to:

- Develop guidance and tools for the sustainable deployment or retrofiting of renewable energy infrastructure powerlines;
- Promote global coordination by disseminating best practice;
- Address knowledge gaps through research;
- Provide a forum where International Finance Institutions, Corporates and Civil Society cooperate finding common solution.





CMS ENERGY TASK FORCE RESOURCE MOBILISATION

Thanks to the generous support from the Governments of Germany, India and France, the ETF has been able to operate at global scale. Ensuring sustainable long-term financial support is vital to implement our ambitious programme of work.

OUR IMPACT SO FAR



The CMS ETF achievements so far:

- Analysis of progress of CMS Parties in reconciling energy development with the conservation of migratory species;
- An information package on the sustainable deployment of renewable energy technologies and power lines;
- Spatial mapping tools to assess potential risks e.g. **AVISTEP (avistep.birdlife.org)**, and guidance to government for meeting commitments under the Paris Agreement with minimal impact on biodiversity;
- Good Practice Handbook on the Design of Post-Construction Monitoring of Bird and Bat Fatalities Wind Energy Facilities;
- Capacity building through webinars on key topics/regions and sharing of case studies, e.g. Retrofitting Powerlines for Saker Falcons in Mongolia.

An aerial photograph showing a stark contrast between a lush green forest on the left and a cleared, brown, and heavily eroded area on the right. A blue excavator is positioned in the cleared area, and a fire with blue smoke is visible in the upper right. The text "BUT PRIORITY ACTION IS NEEDED NOW" is overlaid in white, bold, uppercase letters across the center of the image.

BUT PRIORITY ACTION IS NEEDED NOW

FUTURE FUNDING

In 2021, energy transition-related investment was almost USD\$1 trillion, and it only increasing. Investment in the right technology in the right way is needed now.



**MULTI-YEAR FUNDING
IS REQUIRED TO SUPPORT
THE ETF TO DELIVER ON
ITS FUTURE WORK.**

RESOURCE MOBILISATION



The CMS ETF future priorities:

- Lead the development, geographical expansion and global uptake of guidance for the sustainable deployment and retrofitting of renewable energy infrastructure and best practice tools;
- Support continued research and monitoring of multi-level impacts of renewable energy infrastructure on migratory species;
- Increase cooperation and engagement with international financial institutions;
- Ensure spatial planning tools are available for all CMS Parties, such as **AVISTEP** (avistep.birdlife.org).

FUTURE FUNDING

Proposed four-tear annual budget **(2021-2024)**

ITEM DESCRIPTION	TOTAL ANNUAL BUDGET (€)
Coordination and technical support	105,000
Communication, events, outreach activities and materials	29,500
Government engagement workshops (regional)	80,000
Small grants to ETF members to carry out activities nationally	35,000
Total (inclusive of overheads)	250,000

ABOUT THE CMS

The Convention on the Conservation of Migratory Species of Wild Animals (CMS), also known as the Bonn Convention, is an environmental treaty of the United Nations. It provides a global platform for governments and partners to work together for the conservation and sustainable use of migratory species and their habitats at the trans-boundary, regional and international levels.

Animals receive protection under CMS through listing on its two Appendices, through global or regional agreements and through action plans.

CMS CURRENTLY HAS 133 PARTIES*



Image © Matt Bango

*As of 1 March 2022

GET INVOLVED



If you wish to learn more about the work of the ETF, become a member or engage otherwise, please get in touch.



www.cms.int/en/taskforce/energy-task-force



Dr Rhiannon Niven
CMS Energy Task Force Coordinator
Rhiannon.niven@birdlife.org



Dr Iván Ramírez
Head Avian Species Team
ivan.ramirez@un.org

THE ETF FRAMEWORK

KEY AMEND = amended item from 2018 - 2020 workplan CONT = continued item from 2018 - 2020 workplan NEW = new item in 2021 - 2024 workplan

ITEM	ACTION	RESPONSIBLE ENTITIES	DELIVERABLES	FUNDING STATUS
1	Theme: Promote implementation of relevant guidelines adopted in the frameworks of the participating MEAs Expected Result: Guidelines are integrated into decision-making			
1.1	Prepare and disseminate information packages, including fact sheets and information about existing decision support tools for the following stakeholders <i>(including in relevant languages where possible)</i> : <ul style="list-style-type: none"> • CMS and AEWA Parties • Renewables energy sector stakeholders and environmental assessment practitioners • Financial institutions • Conservation organisations • Member case studies 	Coordinator, CMS, AEWA, EUROBATS Secretariats, ETF members	ETF to review information packages (resource documents) and ETF Coordinator to revise as necessary (including in relevant languages) ETF to consider additional materials Provide revised versions to sector specific stakeholders ETF members to support development of tailored information packages and case studies (identify both successes and challenges)	Funded (AMEND)
1.2	Global mapping of ETF member activities	Coordinator, CMS Secretariat, ETF members	Identify and map ETF member activities in line with workplan actions	Funded (NEW)
1.3	Present at or host side-events at key global conventions e.g. UNFCCC COP; CBD COP; CMS COP; IUCN WCC and UNGA Biodiversity Summit	Coordinator, CMS Secretariat, ETF members	Prepare and submit side event proposals and invite ETF members	Funded (AMEND)
1.4	Track, engage and support, as appropriate, CBD and UNFCCC main streaming biodiversity agenda in the energy sector	Coordinator, ETF members	Coordinator to engage CBD and UNFCCC secretariat and provide information to members	Funded (AMEND)
1.5	Further engage national focal points from relevant MEAs (including CBD and UNFCCC), national energy and economy ministries, national energy authorities, to inform them of the work of ETF-endorsed guidelines, research and upcoming ETF events	ETF member governments, Coordinator	ETF Coordinator to work with Government members to engage with appropriate national stakeholders	In-kind (CONT)
1.6	Map green recovery materials, identify experiences and develop best practice case study examples to support nature-sensitive renewable energy deployment	Coordinator, ETF members	Coordinator to identify member interest and priorities ETF Coordinator to develop ETF briefing/information resource documents and case studies with members	In-kind (NEW)

ITEM	ACTION	RESPONSIBLE ENTITIES	DELIVERABLES	FUNDING STATUS
2	Theme: Promote main streaming migratory species conservation into corporate and financial decision-making Expected Result: Appropriate safeguards are integrated into corporate and financial decision-making			
2.1	Continue to identify relevant stakeholders in energy and financial sectors	Coordinator, CMS Secretariat, ETF members	Coordinator in consultation with CMS and ETF to decide on priority stakeholder approach and approach stakeholders for potential membership or collaboration	Funded (AMEND)
2.2	Engage with industry and investors - build partnerships and establish pilot initiatives with industry and investors	Coordinator, CMS Secretariat, ETF members	Ongoing engagement with industry and investors in work plan activities Development of pilot concept initiatives with members	Unfunded (AMEND)
2.3	Information document for renewable energy and environmental sectors on the business case for implementing guidelines	Coordinator, ETF members	Development of business case and interactive tool based on briefing document Support from relevant members	Funded (AMEND)
2.4	Promotion of ETF at key global and regional energy forums and summits, industry and consultation events for promotion of ETF activities, including international finance events, regional energy forums and international industry events	Coordinator, CMS Secretariat, ETF members	Scope opportunities for engagement with events Prepare and submit event proposals and invite ETF members/observers as appropriate	Funded (NEW)
2.5	Development of tailored guidance notes for the private sector and financial institutions	Coordinator, ETF members	Coordinator to identify member interest and priorities	Unfunded (NEW)
3	Theme: Priority setting Expected Result: Workplan reflects priorities			
3.1	Review workplan at annual ETF meetings to identify additional priority activities in line with CMS Resolutions 11.27 (Rev.COP13) and 10.11 (Rev.COP13) and including long-term goals	ETF members	Update work plan	Funded (CONT)
3.2	Hold meetings to identify ETF research priorities	Coordinator, CMS Secretariat, TWG, ETF members	Create a Technical Working Group (TWG) to discuss ETF research priorities Identify research priorities for Coordinator and TWG to develop survey and engage with ETF members in advance TWG to support facilitation and development of intersessional group	Funded (AMEND)
3.3	Review progress on implementing the workplan every six months	Coordinator, CMS Secretariat, ETF members	Coordinator to initiate and facilitate progress review	Funded (CONT)

ITEM	ACTION	RESPONSIBLE ENTITIES	DELIVERABLES	FUNDING STATUS
4	Theme: Mobilising resources Expected Result: Priority activities identified and funded			
4.1	Identify key funding priorities and opportunities	Coordinator, CMS Secretariat, ETF members	Review fundraising plan Encourage and coordinate fundraising efforts of ETF members	In-kind (CONT)
4.2	Prepare funding proposal to further develop decision support tools	Coordinator, ETF members	Develop fundraising concept notes to address funding needs	Funded (CONT)
4.3	Liaise with potential donors to seek support for ETF activities	Coordinator, CMS Secretariat, ETF members	Work with CMS Secretariat to coordinate donor engagement by ETF members	Funded (CONT)
4.4	Identify national opportunities via selective grants available to ETF members/observers to carry out activities nationally	Coordinator, CMS Secretariat, ETF members	Scope requirements of members/observers Coordinator to organize planning meeting(s) for interested members Identify potential for follow up meetings	Funded (NEW)
5	Theme: Monitoring implementation and impediments to implementation Expected Result: Report on status of implementation; impediments to implementation and potential solutions identified			
5.1	Conduct surveys and interviews with selected CMS Parties to implement different components of ETF-endorsed guidelines and identify key impediments to implementation	Coordinator, CMS, AEWA, EUROBATS Secretariats, ETF members	ETF members to engage with process Coordinator to develop survey and interview questions	Unfunded/in-kind (CONT)
5.2	Analyse existing guidelines to identify gaps and need for more technical detail; develop complementary technical notes (e.g. sensitivity mapping, thresholds, data collection and monitoring, mitigation hierarchy and powerlines, cumulative impacts, decision support tools)	TWG	TWG to agree on further activities, timelines and responsibilities	Unfunded (AMEND)
6	Theme: Stimulating communication and information exchange Expected Result: Task force members collaborate and share information			
6.1	Make information about the ETF available on the ETF website	Coordinator, CMS Secretariat	Coordinator to review and keep updated	Funded (CONT)

ITEM	ACTION	RESPONSIBLE ENTITIES	DELIVERABLES	FUNDING STATUS
6.2	Organisation of the annual meetings of the ETF	Coordinator, CMS Secretariat	Coordinator to prepare travel arrangements for ETF members Coordinator to facilitate and prepare meeting as appropriate	Funded (CONT)
6.3	ETF members exchange case studies, lessons learnt and best practices during ETF meetings and through online platform	Coordinator, CMS Secretariat, ETF members	Coordinator to encourage sharing of materials between members during meetings and via website	Funded (CONT)
6.4	Deliver and record webinar series for CMS Parties, financial institutions and energy sector stakeholders, with presentations via ETF members and other experts	Coordinator, ETF members	Work with ETF members to discuss need and identify best approach for delivering webinar series; support arrangements for production	Unfunded/in-kind (AMEND)
6.5	Identify relevant best practices in relation to powerline impacts that could be applicable in other countries. Disseminate guidelines	ETF members	Work with members to initiate engagement with relevant task force members Identify roles, responsibilities and funding needs	Unfunded/in-kind (AMEND)
6.6	Develop short video highlighting the role of the ETF and sharing case studies/views from across ETF members	Coordinator, CMS Secretariat, ETF members	Coordinator to develop draft concept together with CMS Secretariat	Unfunded/in-kind (CONT)
6.7	Develop ETF as a knowledge hub, disseminate research and other ETF outputs (e.g. via hubs and other expert forums)	Coordinator, CMS Secretariat, ETF members	Member initiative Members to identify appropriate fora	In-kind (CONT)
6.8	Develop communications strategy for ETF	Coordinator, CMS Secretariat	Coordinator to prepare/amend ETF members consulted on strategy	Funded (CONT)
6.9	Continue development and promotion of ETF network through a quarterly newsletter	Coordinator	Coordinator to prepare and distribute to members	Funded (NEW)
6.10	Develop social media package and strategy for ETF	Coordinator, CMS Secretariat	Coordinator to prepare in consultation with CMS Secretariat	Funded (NEW)
6.11	Scope opportunities for an ETF award scheme	Coordinator, CMS Secretariat, ETF members	Coordinator to prepare in consultation with ETF members	Unfunded (NEW)
6.12	Develop ETF working groups, based on interest and demand from ETF members	Coordinator, CMS Secretariat, ETF members	Coordinator to initiate engagement with interested task force members Organise planning meeting for interested members and agree on working group scope Coordinator and interested members to support facilitation and development of intersessional working groups	Funded (NEW)

ITEM	ACTION	RESPONSIBLE ENTITIES	DELIVERABLES	FUNDING STATUS
6.13	Scope opportunities for an ETF mentoring and capacity building scheme among members	Coordinator, CMS Secretariat, ETF members	Coordinator to identify member interest and priorities	In-kind (NEW)
6.14	Increase communication and resource dissemination on existing ETF sectors and species gaps (e.g. non-avian species and solar energy)	Coordinator, CMS Secretariat, ETF members	Coordinator to identify member interest and priorities	In-kind (NEW)
7	Theme: Strengthening regional and international networks Expected Result: Strong regional and international networks			
7.1	ETF members to promote the aims of the ETF through relevant regional and international networks	ETF members	Coordinator to encourage ETF members to promote aims of ETF through their network	In-kind (CONT)
7.2	Map priority regional and international networks	Coordinator, ETF members	Identify priorities in ETF6 meeting	Funded (CONT)
7.3	Scope and promote ETF expansion globally into other regions (including Asia and the Americas)	Coordinator, ETF members	Coordinator to prepare in consultation with ETF members and regional networks	In-kind (NEW)
7.4	Expand regional engagement and advocacy through regional ETF workshops, including in the Americas, Africa, Asia Pacific and Europe	Coordinator, CMS Secretariat	Plan and prepare regional ETF workshops	Unfunded (NEW)
8	Theme: Stimulating research Expected Result: Significantly increase the evidence base on which to make planning and mitigation decisions			
8.1	Engage with international research community – build relationships and evidence base	Coordinator, CMS Secretariat, ETF members	Ongoing engagement with research community in work plan activities	Funded (NEW)
8.2	Further develop spatial mapping tools to assess the potential risk of government commitments following the Paris Agreement and to help show governments how they can meet their commitments with minimal impact upon biodiversity	Coordinator, ETF members	Further concept Organise planning meeting for interested members	Unfunded (CONT)
8.3	Develop appropriate tools and guidance for developers and regulators to help them assess cumulative impacts across powerlines and RETs, collaborating with CMS Scientific Council	Coordinator, ETF members	Organise planning meeting for interested members	Unfunded (CONT)

ITEM	ACTION	RESPONSIBLE ENTITIES	DELIVERABLES	FUNDING STATUS
8.4	Synthesise and compare information on the impacts of different renewable energy technologies and the potential for mitigating species impacts	Coordinator, ETF members	Organise planning meeting for interested members	Unfunded (CONT)
8.5	Collision modelling for powerlines to identify vulnerable species globally	Coordinator, ETF members	Organise planning meeting for interested members	Unfunded (CONT)
8.6	Review and synthesise mitigation solutions (e.g. shut down-on-demand) across different technologies and powerlines to identify whether there is sufficient evidence to promote particular solutions and to identify knowledge gaps for further assessment	Coordinator, ETF members	Organise planning meeting for interested members	Unfunded (CONT)
8.7	Support the development of a Good Practice Handbook (GPH) on the Design of Post-Construction Monitoring of Bird and Bat Fatalities at Wind Energy Facilities	Coordinator, ETF members (IFC, EBRD, BirdLife International)	Led by IFC, EBRD, KfW Coordinator to facilitate ETF member comments on the GPH	In-kind (NEW)
8.8	Review how global climate change mitigation scenarios can be met by achieving both renewable energy and biodiversity targets	Coordinator, BirdLife International, ETF members	Further concept – led by BirdLife International Consultation with ETF members	Unfunded (NEW)
8.9	Scope opportunities for expanding renewable energy guidance base to cover additional renewables, such as hydropower	Coordinator, CMS Secretariat, ETF members	Coordinator to prepare in consultation with ETF members	In-kind (NEW)
8.10	Scope opportunities for expanding renewable energy guidance base to cover additional migratory species, such as marine species and bats, to a larger extent	Coordinator, CMS Secretariat, ETF members	Coordinator to prepare in consultation with ETF members	In-kind (NEW)

KEY AMEND = amended item from 2018 - 2020 workplan CONT = continued item from 2018 - 2020 workplan NEW = new item in 2021 - 2024 workplan