



CMS-led Efforts to Tackle Marine Pollution

Melanie Virtue
Head, Aquatic Species Team



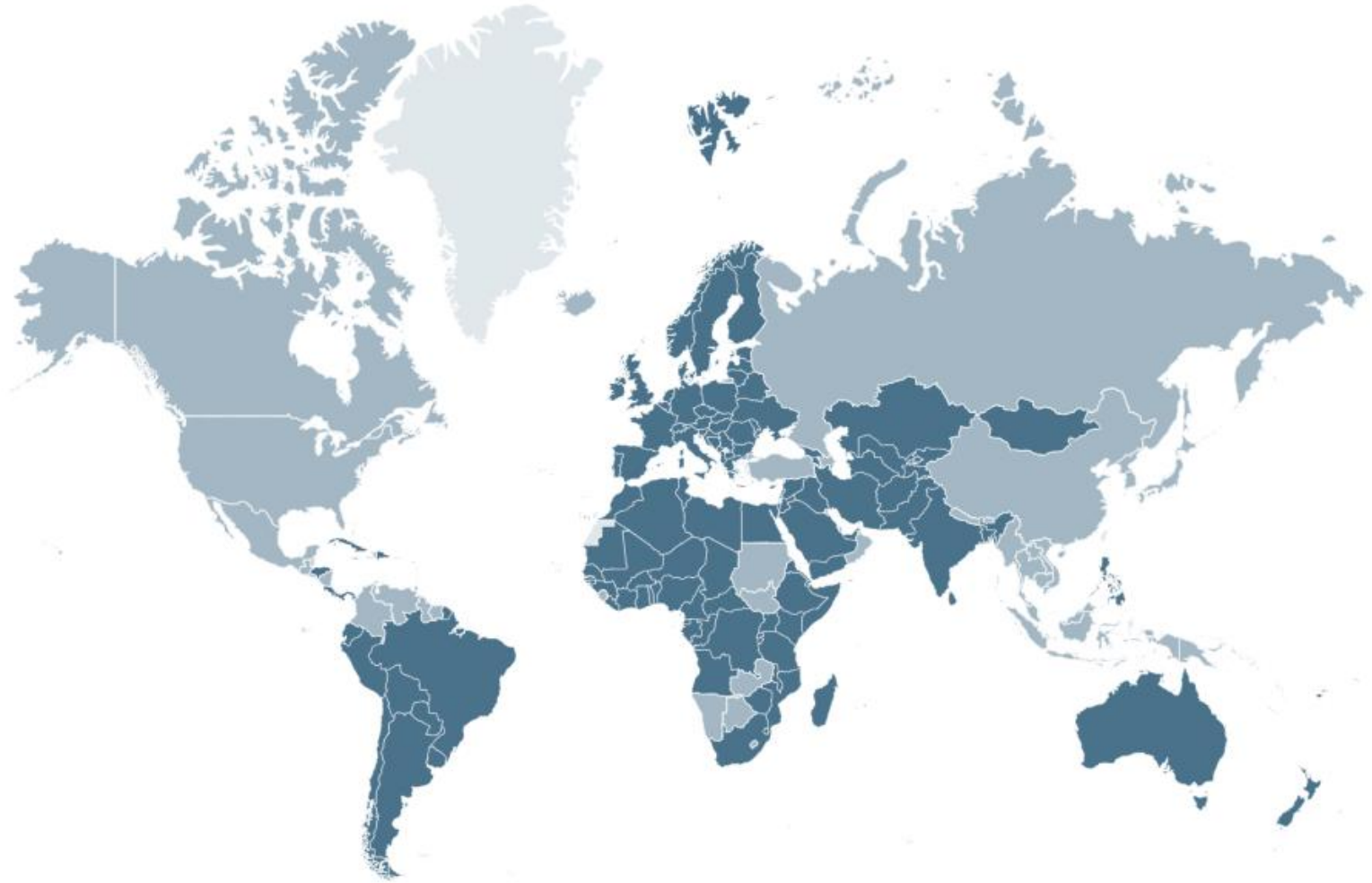
CMS

The Convention on the Conservation of Migratory Species of Wild Animals

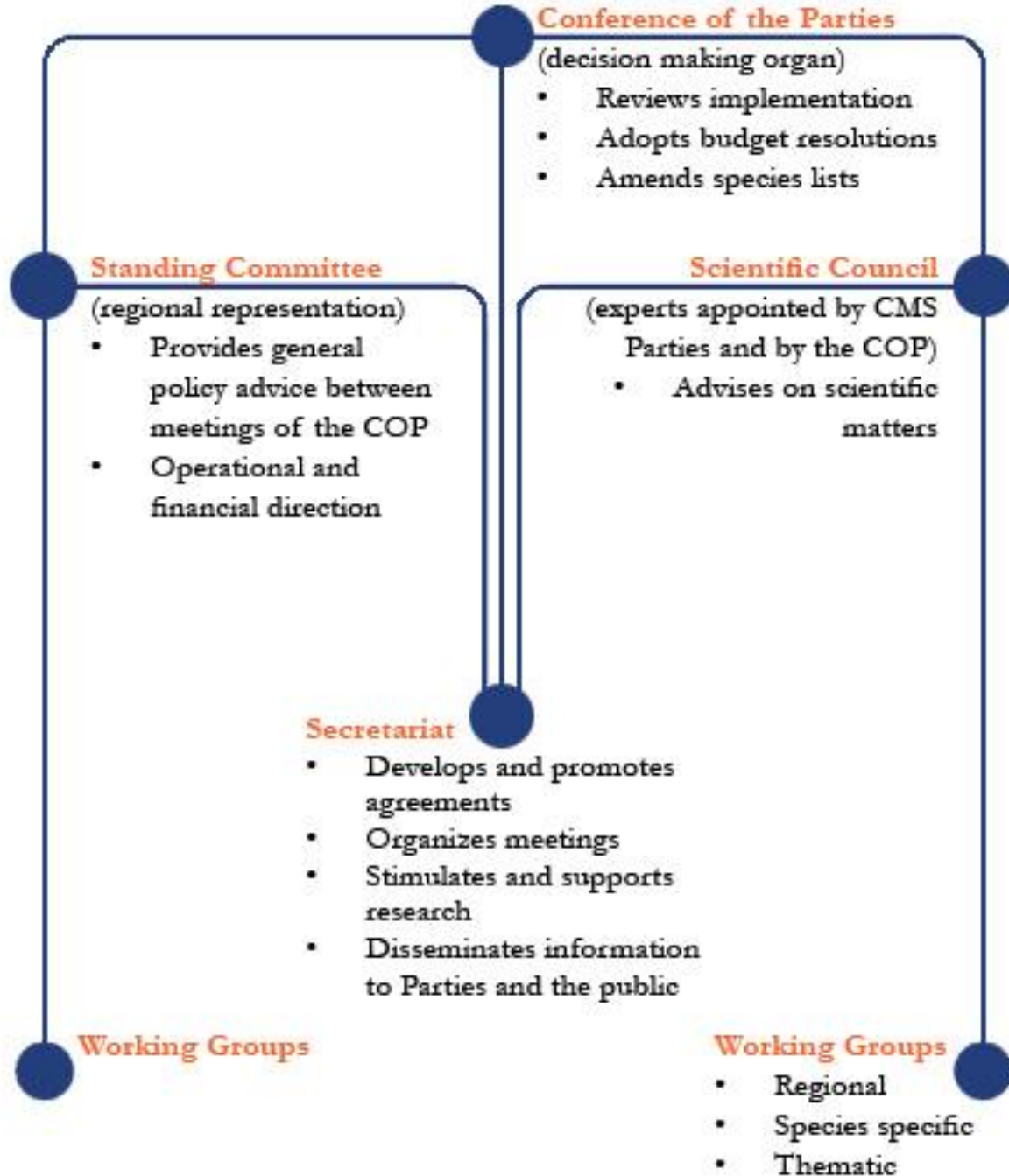
- Multilateral environmental treaty administered by UNEP
- Global convention specialized in the conservation of migratory species, their habitats and migration routes



133 Parties



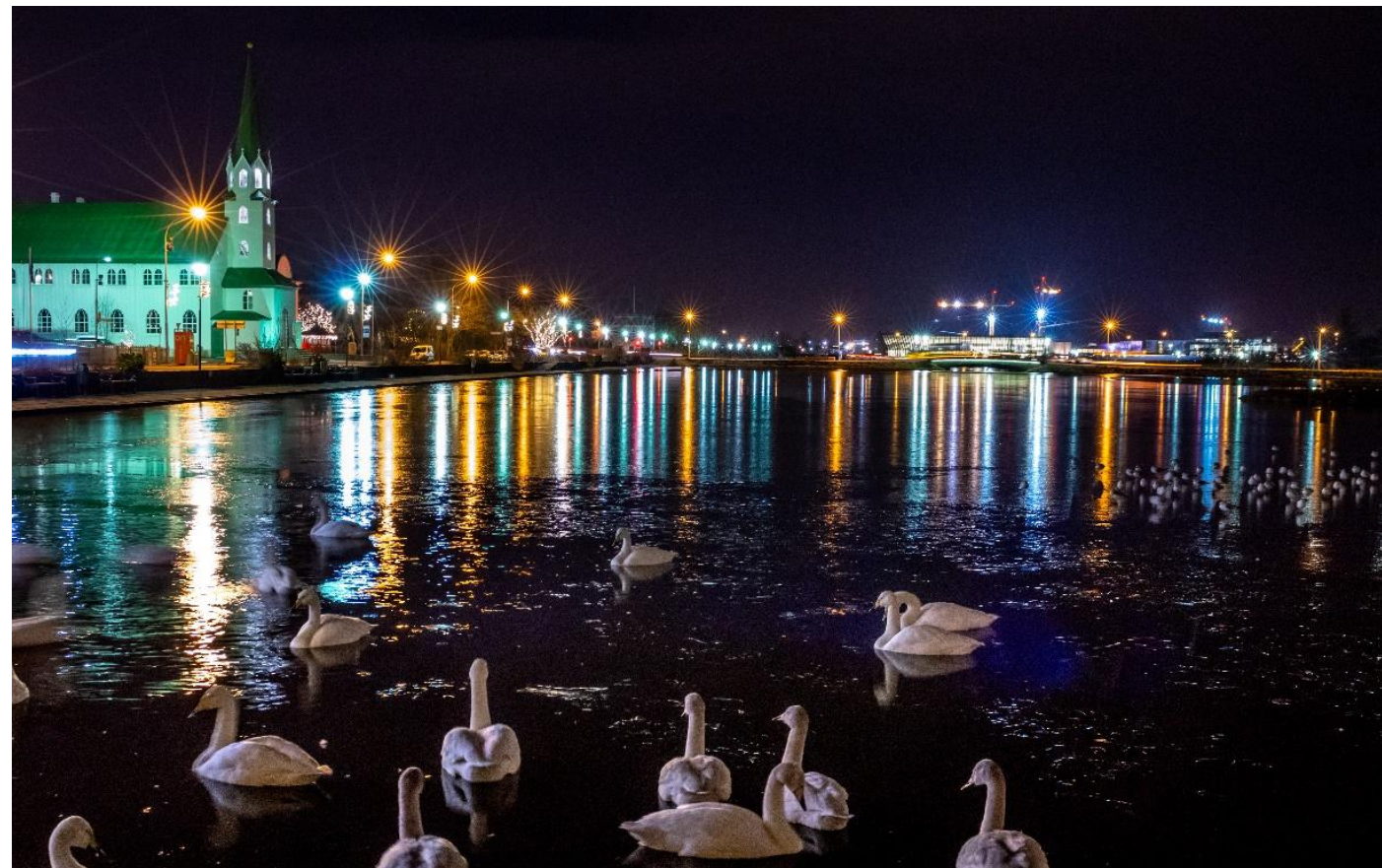
Organizational Structure of CMS



CMS work relevant to marine pollution

-
- 13.5 CMS International **Light Pollution Guidelines** for Migratory Species
-
- 12.20 Management of **Marine Debris**
-
- 12.14 Adverse Impacts of **Anthropogenic Noise** on Cetaceans and other Migratory Species
-
- 14.9 **Conservation Priorities for Cetaceans**
-
- 7.3 (Rev.COP12) **Oil Pollution** and Migratory Species

CMS International Light Pollution Guidelines for Migratory Species



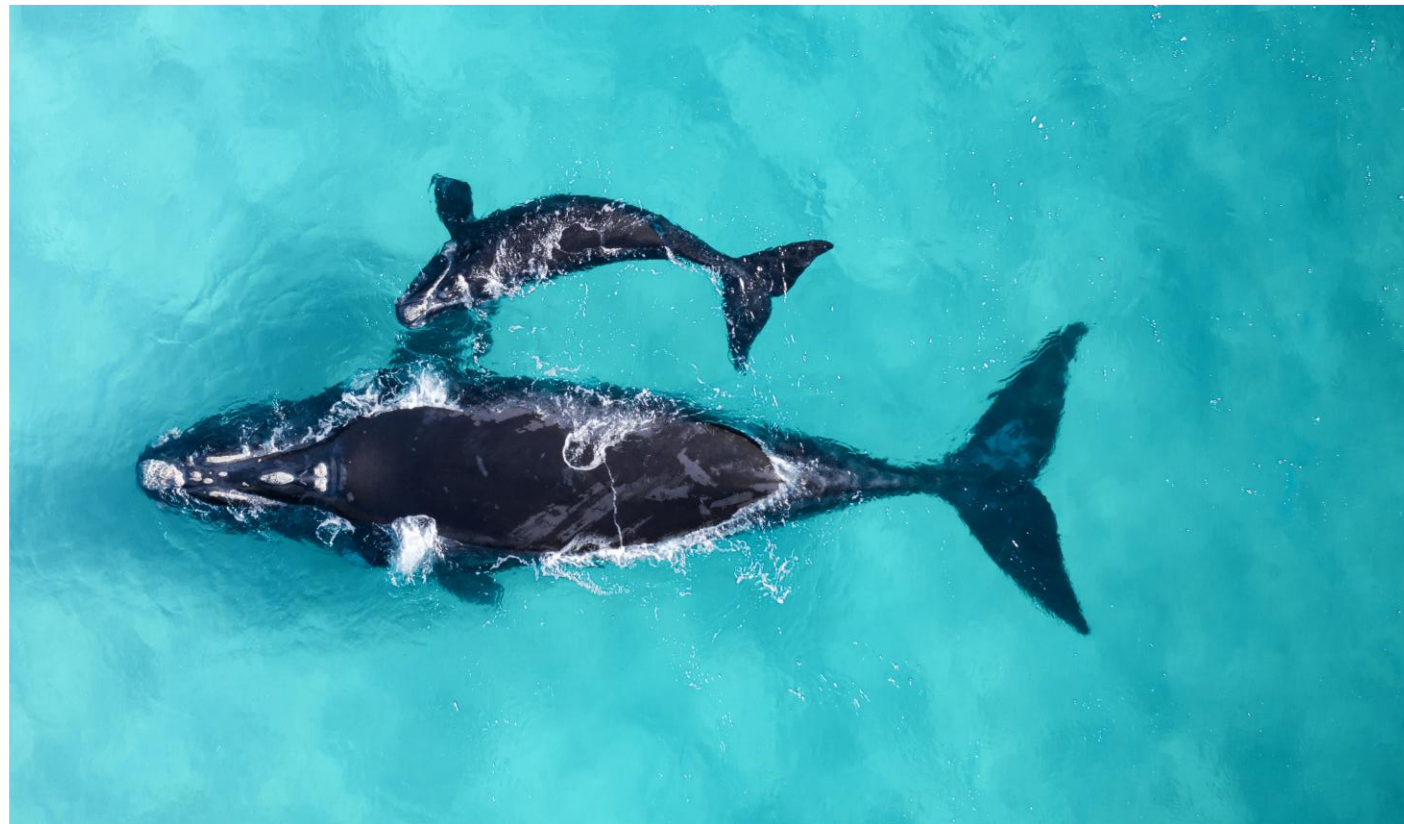
Management of Marine Debris



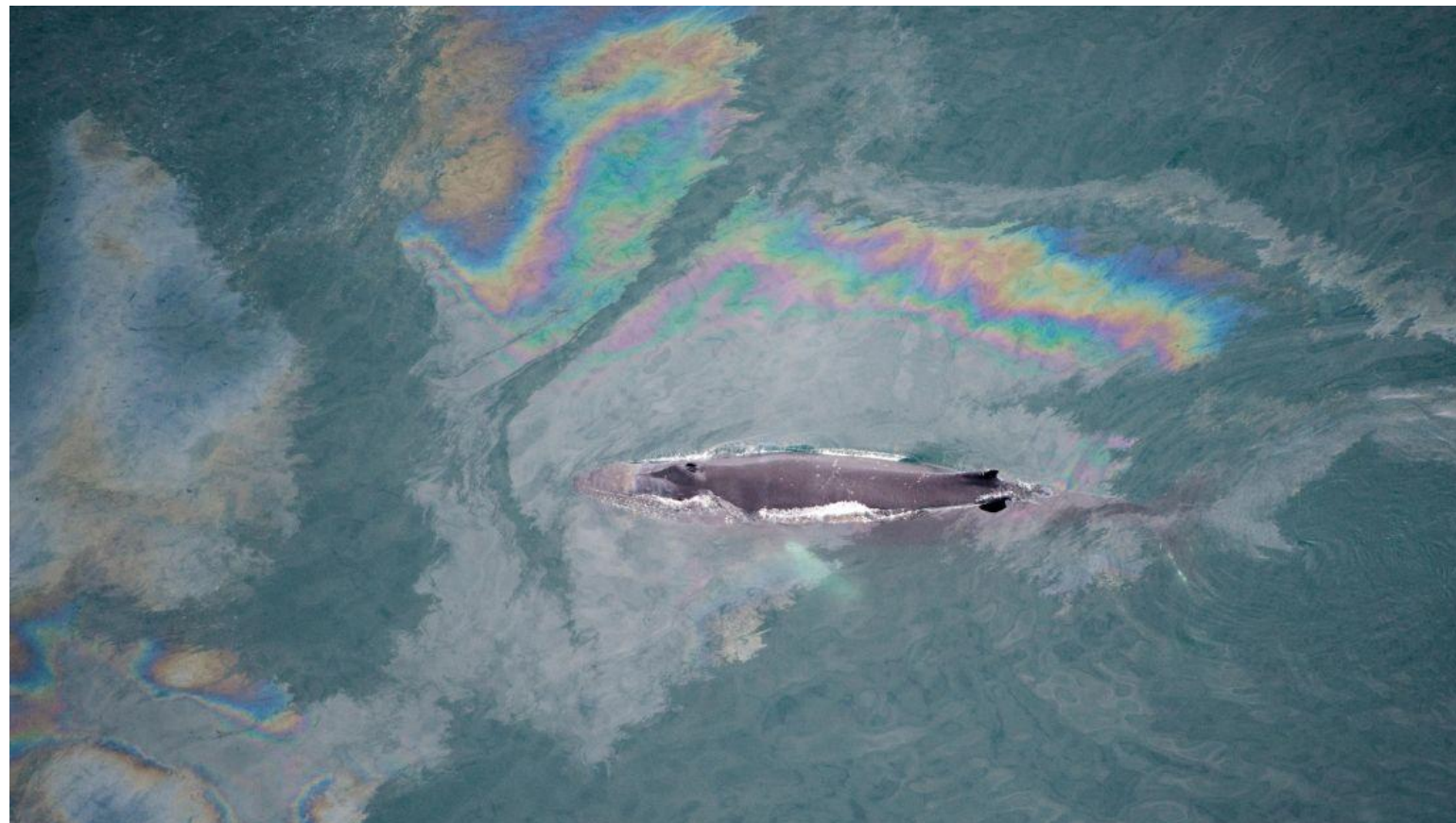
CMS Family Guidelines on Environmental Impact Assessment for Marine Noise-generating Activities



Conservation Priorities for Cetaceans



Oil Pollution and Migratory Species



CMS mandate moving forward

Decisions adopted at COP14 (Feb. 2024) on marine pollution (14.41 to 14.43):

- 14.41 To Parties
- 14.42 To the Scientific Council
- 14.43 To the Secretariat



14.41 To Parties (1/2)

Parties are requested to:

- a) when developing **conservation plans** for migratory marine species, **integrate the need to address the threat of marine pollution**, by:
 - i. **considering pollution-induced threats** to the survival, health and welfare of the taxa concerned, including sub-lethal effects on behaviour, health and reproduction;
 - ii. **describing and publicizing the threats** to affected populations, species and their habitats; and
 - iii. developing **actions to address threats** taking account of feeding, breeding and migratory grounds;

14.41 To Parties (2/2)

Parties are requested to:

[...]

b) identify habitats and populations affected by **chronic pollution threats**, for example from **legacy pollutants**, and identify actions to mitigate such threats;

c) set up **rapid-response systems** to effectively deal with **acute pollution problems**, such as a chemical, oil or plastic pellet spills; and

d) **report to the Conference of Parties** at its 15th meeting on the progress in implementing the Decision.

14.42 To the Scientific Council (1/2)

The Scientific Council is requested, subject to the availability of external resources, to:

- a) identify **priority forms of pollution** affecting CMS-listed marine species, avoiding overlap with Decisions 14.44-14.47 on Marine Noise and Decisions 14.221-14.222 on Light Pollution, and develop a **review of these threats**, including cumulative impacts, and **identify localities where marine pollution and migratory marine species significantly intersect**;
- b) seek to **collaborate** with relevant daughter Agreements, IWC, IMMA process for marine mammals, ISRA process for sharks and rays, and other fora where similar initiatives are being investigated;

14.42 To the Scientific Council (2/2)

The Scientific Council is requested, subject to the availability of external resources, to:
[...]

c) with regard to **plastic pollution** as outlined in 14.42 (a), carry out the work in conjunction with implementing Decision 14.225 on Plastic Pollution;

d) hold an **expert workshop** to identify priority species, populations and habitats for immediate action, based on findings of the review, and develop **recommendations** for consideration by ScC-SC8; and

e) in support of the workshop outlined in 14.42 (d), establish a **steering group** of appropriate experts to guide the focus, agenda and other modalities of the workshop.



THANK YOU!

