

**THIRD RANGE STATE MEETING OF THE CMS
CENTRAL ASIAN MAMMALS INITIATIVE (CAMI)**

24 – 26 June 2025, Tashkent, Uzbekistan

UNEP/CMS/CAMI3/Doc.3/Rev.1

**DRAFT WORK PROGRAMME FOR THE CENTRAL ASIAN MAMMALS INITIATIVE
2026-2032**

Summary:

The Central Asian Mammals Initiative (CAMI), established under CMS Resolution 11.24 by COP11 along with its associated Programme of Work, provides a strategic framework for the conservation of migratory mammals in Central Asia. Activity 29.7 of the Programme of Work calls for its update and approval by CMS COP15.

The draft Programme of Work for CAMI, was reviewed by the participants of the Technical Workshop for CAMI, jointly organized by the International Academy for Nature Conservation of the German Federal Agency for Nature Conservation and the CMS Secretariat. Rev.1 was prepared to make editorial changes to the table of Activities, e.g. to correct numbering and remove duplications.

Action requested:

Review and adopt the Work Programme.

DRAFT WORK PROGRAMME FOR THE CENTRAL ASIAN MAMMALS INITIATIVE 2026-2032

Background

1. The Central Asian Mammals Initiative (CAMI) including its Programme of Work was established by the 11th Meeting of the Conference of the Parties to CMS (COP11) through Resolution 11.24 to provide a common strategic framework for the conservation of CMS-listed mammals and their habitats in the wider Central Asian region. It is considered a form of an agreement as described under Article V of the Convention and is open to participation of all Range States of CAMI species, whether they are Parties to the Convention or not. Since the establishment of CAMI, its Programme of Work has been updated every six years. With the update of the Programme at the Third Range States Meeting to CAMI, the Secretariat proposes to change the title of the CAMI Programme of Work (CAMI POW) to Work Programme for CAMI (CAMI WP) and thus it is referred to as CAMI WP hereunder.
2. In accordance with CMS Decision 14.167, adopted at COP14 in Samarkand, Uzbekistan (12–17 February 2024), the CAMI WP is to be revised for the period 2027–2032. The revision aims to streamline activities by focusing on cross-cutting actions that benefit multiple species and to incorporate updated CMS mandates relevant to the region. These timelines were originally aligned with the expected schedule of CMS Conferences of the Parties. However, as the dates of COP14 and COP15 have not followed the anticipated cycle—COP15 is now scheduled for March 2026, more than six months earlier than expected—the Secretariat proposes adjusting the period covered by the next CAMI WP to 2026–2032 to ensure alignment with the revised COP schedule.
3. Given the vast and overlapping ranges of many Central Asian mammals as well as the similar threats to these species, the revised CAMI WP incorporates a set of cross-cutting activities, aiming to improve conservation of multiple species. These include measures related to: habitat connectivity, human-wildlife conflict and coexistence, sustainable use and trade, sustainable land-use practices, population (including health and disease) monitoring, anti-poaching, and community engagement and are aligned with current obligations of Range States under CITES, CMS, CBD and other relevant international treaties. The Draft CAMI WP aims to foster long-term conservation success by guiding the creation of up-to-date national policies coordinated between Range States to safeguard transboundary populations of CMS-listed species.
4. The CMS Secretariat commissioned the drafting of the CAMI WP to Ms. Tanya Rosen, Director of the Central Asia Program at Conservation X Labs, as part of the Central Asian Mammals and Climate Adaptation project funded by the International Climate Initiative of the German Government. Experts from CAMI Range States also contributed valuable input to the drafting process. In addition to the CAMI WP, the following species-specific instruments have been adopted by Range States and are part of CAMI:
 - Range-wide Strategy for the Conservation of the Persian Leopard (2023-2032);
 - Action Plan for the Conservation of the Argali (2024-2032);
 - Range-wide Action Plan for the Asiatic Wild Ass (2024 - 2033);
 - Work Programme for the Bukhara Deer (2025-2032); and
 - Medium-term International Work Programme for the Saiga Antelope (2025-2030).

5. Preparation of the 2026–2032 CAMI WP was informed by recent scientific assessments, stakeholder consultations, and conservation project evaluations. In particular, it integrates recommendations and activities from the following reports: the CMS reports “*Transboundary conservation hotspots for the Central Asian Mammals Initiative*”, “*Potential for community-based wildlife management in Central Asia*” and “*Report on the identification of funding options for the implementation of the Central Asian Mammals Initiative*”; and the species-specific instruments listed above as well as Concerted Actions for the Pallas's Cat and for the Eurasian Lynx.
6. The area-based activities proposed in the draft CAMI WP are grounded in geographical areas of high importance for the conservation of CAMI species, referred to as Conservation Units (CUs). For a map of these areas please see Figure 1 and Annex II of this document. These units were defined based on the transboundary conservation hotspots identified in the CMS report “*Transboundary Conservation Hotspots for the Central Asian Mammals Initiative*.” and revised by the participants of the Technical Workshop for CAMI, taking place on 6-8 May, 2025, on the Isle of Vilm, Germany (see Annex I). The approach taken in the study was further expanded to include habitats of additional species listed by CMS COP14 and proposed for inclusion in CAMI, such as the Pallas’ Cat and the Eurasian Lynx. Subsequently, priority CUs for the period 2026-2032 were selected (Table 1) based on the following criteria:
- their transboundary nature;
 - the importance of each CU for the conservation of the respective species and the total number of CAMI species¹ occurring there;
 - alignment with Range State obligations under CMS and other Conventions
 - existing priority areas for biodiversity conservation;
 - the need and urgency for implementing conservation action in each CU;
 - the requirements for implementation of CMS instruments and mandates, as well as other existing agreements and transboundary projects; and
 - the political feasibility of implementing transboundary cooperation to enhance conservation of the CU.
7. The CUs are organized by the number of CMS Parties sharing the CU and by geographic clusters in the following order in the draft CAMI WP:
- 1) Western and Southern Ustyurt
 - 2) Northern and Eastern Ustyurt
 - 3) Aralkum / North-Western Kyzylkum Desert
 - 4) Kopetdag
 - 5) Koytendag/Kugitang
 - 6) Western Tian Shan
 - 7) Northern and Inner Tian Shan
 - 8) High Pamirs
 - 9) Altai
 - 10) Daurian Steppe
 - 11) Gobi
 - 12) Western Trans-Himalaya.

¹ Pallas’ Cat and Lynx are not yet formally part of CAMI, but were recommended by CMS COP14 to be included in CAMI.

Table 1. Scoring Table for the Selection of Conservation Units of the CAMI Work Programme 2026-2032

For the purpose of priority ranking for every CU, each of the criteria was assigned a score. Criteria Score: importance of each CU = number of species; 1 = occurrence irregularly or previously; 2 = regularly; and 3 = substantial numbers. All other criteria: (0= none; 1=low; 2=medium; 3=high).

CU	Criteria						Score	Priority
	Importance of each CU area for the conservation of the respective species and the number of CAMI species occurring there	Alignment with Range State obligations under other conventions	Existing priority areas for biodiversity conservation in the region	Need, urgency and feasibility for implementing conservation action in each CU	Requirements for implementation of CMS instruments and mandates, as well as other existing agreements and transboundary projects	Political feasibility of implementing effective transboundary cooperation to enhance conservation of the CUs.		
Western and Southern Ustyurt	8	3	3	3	3	3	23	2
Northern and Eastern Ustyurt	6	3	3	3	3	3	21	4
Aralkum / North-Western Kyzylkum Desert	5	3	3	3	3	3	20	5
Kopetdag	7	3	3	3	3	2	21	4
Koytendag/Kugitang	4	3	3	3	3	3	19	6
Western Tian Shan	5	3	3	2	3	3	19	6
Northern and Inner Tian Shan	7	3	3	3	3	3	22	3
High Pamirs	7	3	3	3	3	1	20	5
Altai	7	3	3	2	3	2	20	5
Daurian Steppe	5	3	3	3	3	1	18	6
Gobi	11	3	3	3	3	2	25	1
Western Trans-Himalaya	8	3	3	3	3	2	22	3

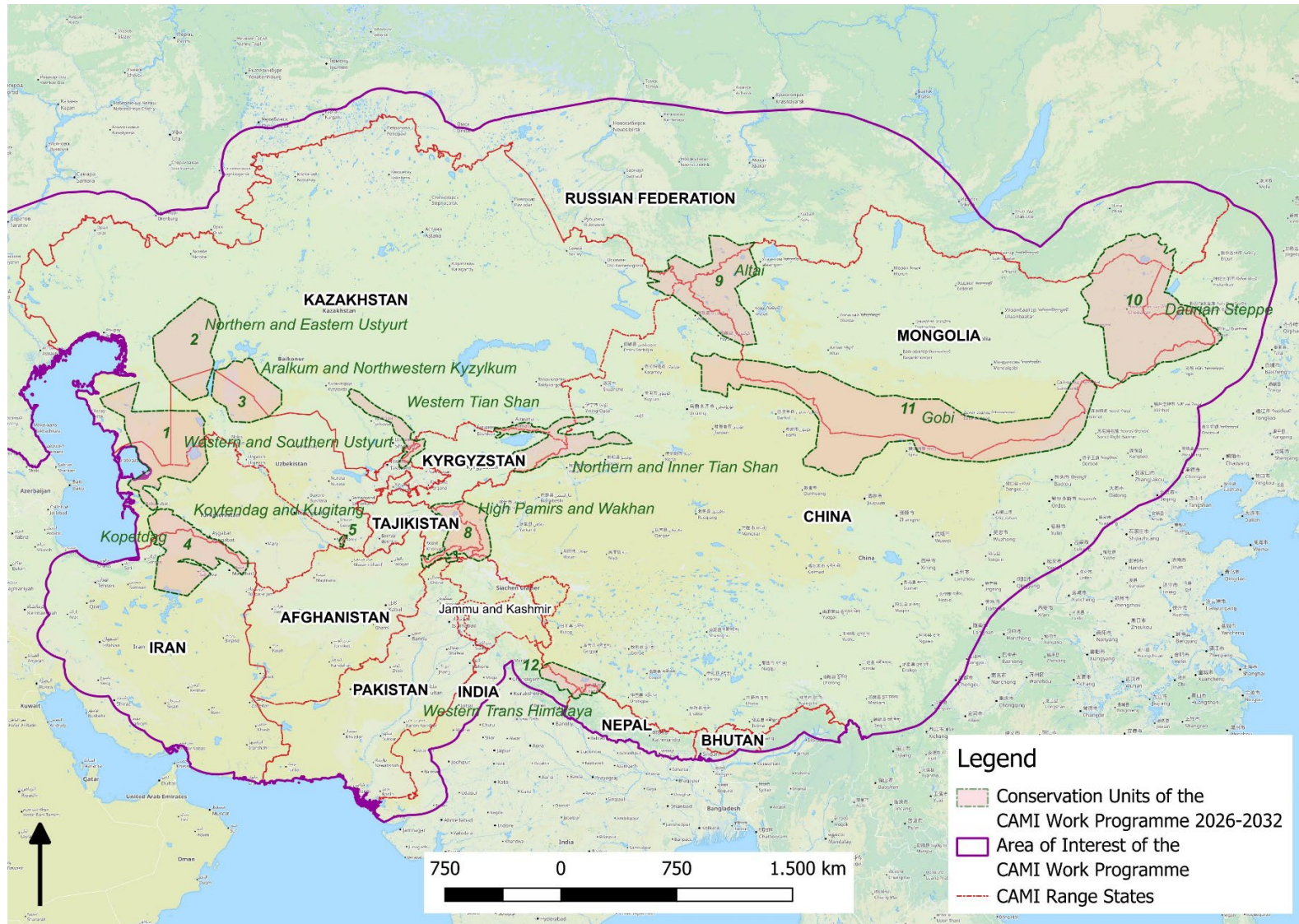


Figure 1. Conservation Units (CUs) of the CAMI Work Programme 2026-2032, maps of individual CUs are found in Annex II to this Document .

Disclaimer: The designations employed and the presentation of the material in this document do not imply the expression of any opinion whatsoever on the part of UNEP/CMS concerning the legal status of any State, territory, city or area, or of its authorities, or concerning the delimitation of their frontiers and boundaries.

Taxonomic and Geographical Scope:

Species covered by CAMI

	Species (common name)	Species (scientific name)	CMS Appendix
1	Argali	<i>Ovis ammon</i>	App. II
2	Asiatic Cheetah	<i>Acinonyx jubatus</i>	App. I
3	Asiatic Wild Ass	<i>Equus hemionus</i>	App. II
4	Bukhara Deer	<i>Cervus elaphus yarkandensis</i>	App. I & II
5	Gobi Bear	<i>Ursus arctos isabellinus</i>	App. II
6	Goitered Gazelle	<i>Gazella subgutturosa</i>	App. II
7	Kiang	<i>Equus kiang</i>	App. II
8	Mongolian Gazelle	<i>Procapra gutturosa</i>	App. II
9	Persian Leopard	<i>Panthera pardus tulliana</i>	App. II
10	Przewalski's Horse	<i>Equus ferus przewalskii</i>	App. I
11	Saiga Antelope	<i>Saiga spp.</i>	App. II
12	Snow Leopard	<i>Uncia uncia</i>	App. I
13	Urial	<i>Ovis vignei</i>	App. II
14	Wild Camel	<i>Camelus bactrianus</i>	App. I
15	Wild Yak	<i>Bos grunniens</i>	App. I

Species additionally proposed to be included into CAMI by COP14: Pallas's Cat (*Felis manul*) and Eurasian Lynx (*Lynx lynx*), listed on CMS Appendix II, occurring in the CAMI Range States. The present draft WP includes all seventeen species.

The scientific names follow Mammal Species of the World, 3rd edition (Wilson & Reeder 2005), the standard taxonomic reference for mammals used by CMS. The names used do not consider nomenclatural changes made since 2005 and in several cases the species names differ from those used [currently] by the IUCN Red List of Threatened Species and other authorities. The species concerned are the Snow Leopard (*Panthera uncia*), Wild Camel (*Camelus ferus*), Przewalski's horse (*Equus ferus*), Pallas' Cat (*Otocolobus manul*), Saiga Antelope (*Saiga tatarica tatarica* and *Saiga tatarica mongolica*) and Bukhara Deer (*Cervus hanglu bactrianus*).

The following are considered Range States to CAMI as per Resolution 11.24 (Rev.COP13): AFGHANISTAN, Bhutan, China, INDIA, the Islamic Republic of IRAN, KAZAKHSTAN, KYRGYZSTAN, MONGOLIA, Nepal, PAKISTAN, the Russian Federation, TAJIKISTAN, TURKMENISTAN and UZBEKISTAN (the names of CMS Parties are capitalized).

Note: In line with Activity 19.1 of the Programme of Work 2021–2026, the following countries participated in the First Range State Meeting for the Persian Leopard, despite falling outside the current geographical scope of the CAMI and not being listed as CAMI Range States in the corresponding resolution: Armenia, Azerbaijan, Georgia, Iraq, and Türkiye. CMS Parties among these countries may consider submitting a draft decision for adoption at CMS COP15 to formally become listed as CAMI Range States, also proposing any adjustments to the Work Programme of importance to their specific geographic area.

DRAFT WORK PROGRAMME FOR THE CENTRAL ASIAN MAMMALS INITIATIVE (2026-2032)

Vision: Secured and functional populations of migratory mammals that range across the landscapes of the wider Central Asian region in healthy ecosystems, are valued by, and bring benefits to, all stakeholders and particularly the local communities that share their range.

Goal: To ensure coordinated actions for the conservation of CMS-listed mammals and their habitats in the wider Central Asian region by strengthening cross-border cooperation to address illegal taking and trade, enhance habitat connectivity, sustainable use of natural resources and promote the coexistence between wildlife and local communities.

Activities to be implemented by 2032		Responsible	Indicator	Priority ²	Related programmes
Cross-cutting Activities Applicable to the Conservation of all CAMI Species across the Identified Conservation Units and to the Species-specific Instruments Listed Below					
<u>Range-wide Strategy for the Conservation of the Persian Leopard (2023-2032)</u>					
<u>Action Plan for the Conservation of the Argali (2024-2032)</u>					
<u>Range-wide Action Plan for the Asiatic Wild Ass (2024 - 2033)</u>					
<u>Work Programme for the Bukhara Deer (2025-2032)</u>					
<u>Medium-Term International Work Programme for the Saiga Antelope (2025-2030)</u>					
1. CAMI WP Implementation and Coordination					
1.1	CMS Secretariat to organize: a mid-term meeting in 2028/29 to assess the status of implementation of this WP, discuss successes and address challenges, and report to CMS COP16; and the Fourth Meeting of CAMI Range States in 2032/32 to assess implementation, discuss successes and address challenges, revise and submit a new WP to CMS COP17.	CMS Secretariat, GOs, NGOs	Meetings held back-to-back with other appropriate meetings, where possible, in coordination with GSLEP, Central Asian Flyway Initiative and others, as appropriate, to utilize possible synergies to enhance the implementation of the WP.	High	Kunming- Montreal Global Biodiversity Framework (GBF) Target 20, Samarkand Strategic Plan for Migratory Species (2024-2032) (SPMS) Goal 1, 6

² Priority for implementing within 6 years: High (high importance and urgency for solving conservation issues affecting the animals and their habitat 1-2 years?). Medium (necessary for stabilization of population numbers within 3-5 years). Low (will contribute to conservation success, but is not urgently needed).

Activities to be implemented by 2032		Responsible	Indicator	Priority ²	Related programmes
1.2	Keep a record of implemented activities and submit National Reports on the implementation of the WP every 3 years, using the reporting forms provided by the CMS Secretariat.	GOs, NGOs	Reports prepared utilizing the reporting forms distributed by the CMS Secretariat.	High	
1.3	Establish Terms of Reference (ToRs) for cooperating organizations providing technical support to the implementation of the CAMI WP, as well as related Strategies and Action Plans, and publish them on the CAMI website.	CMS Secretariat	ToRs developed and published.	High	
1.4	Nominate governmental Focal Points for each conservation unit of this WP and technical support organization(s) covering all CUs.	GOs, NGOs	Governmental Focal Points nominated, and technical support organizations identified.	High	
1.5	Convene at least one meeting annually for CAMI Focal Points and CITES Management Authorities (MA) responsible for the liaison with counterparts in other Range States and cooperating organizations to exchange information on the implementation of the WP, relevant CITES Decisions on , and technical expertise on CAMI species conservation actions.	CAMI Focal Points, CITES MAs	Meeting participant list, summary of the type of information and relevant CITES decisions exchanged, and nature of technical expertise provided.	High	GBF Target 20
1.6	Integrate relevant aspects of this Work Programme into the CITES-CMS Secretariats' joint work programme, at its renewal, to further align and strengthen joint activities on CAMI species and pursue collaborative funding opportunities.	CMS and CITES Secretariats	New CITES-CMS work programme 2026-2032, considering relevant activities from this WP.	High	GBF Target 20
1.7	Propose to CMS and CITES COPs, turning CAMI into a joint CMS-CITES Central Asian Mammals Initiative, following the example of the African Carnivores Initiative.	CMS and CITES Parties	Relevant proposal made to CITES and CMS COPs	Medium	GBF Target 20
1.8	Request non-Party Range States to nominate a Focal Point for CAMI, in cases where no CMS Focal Point is identified.	CMS Secretariat	Focal points nominated	High	
1.9	Conduct technical ecoregional workshops, on thematic issues of this Work Programme (for example community-based wildlife management (CBWM), illegal take of wildlife	CMS Secretariat, GOs, NGOs	3 or more workshops held by 2032	Medium	GBF Targets 20; 22 SPMS Goal 4

Activities to be implemented by 2032		Responsible	Indicator	Priority ²	Related programmes
	and ecological connectivity), to facilitate collaboration and exchange of information among relevant institutions, produce guidance and, where appropriate, establish working groups on thematic issues, linking them to relevant CMS Scientific Council working groups, and CMS initiatives (i.e. Global Initiative on Illegal and Unsustainable Take of Species and Global Partnership on Ecological Connectivity).				
1.10	Establish cross-sectoral Working Groups at the national level, consisting of relevant government authorities and other stakeholders, meeting at least biennially, to coordinate the implementation of this Work Programme, building on existing mechanisms, where available.	GOs, scientific institutions, NGOs, CMS Secretariat (if needed)	2 or more annual meetings held, Terms of Reference agreed, and minutes published.	High	Recommendations of NBSAP Technical Guidance
1.11	Submit, in 2026, to the CBD Secretariat proposals on how to integrate relevant items from this Work Programme into the review of the CBD Protected Area Work Programme.	GOs, NGOs, CMS Secretariat	Proposals submitted.	High	CBD Protected Area Work Programme
1.12	Contribute to the UNCCD Central Asia – Russia Interregional Group and its thematic commissions to facilitate cooperation between the UNCCD and CMS activities in the region.	GOs, CMS Secretariat	Information submitted.	High	UNCCD Central Asia – Russia Interregional Group
1.13	Request IUCN Eastern Europe and Central Asia Regional Office to be considered for support under the CBD Technical and Scientific Cooperation mechanism.	Kazakhstan, Kyrgyzstan, Tajikistan, Turkmenistan, Uzbekistan	Range States requested support.	High	
1.14	Nominate Species Focal Points for all CAMI species in accordance with the agreed Terms of Reference.	CMS Secretariat, GOs	Species Focal Points nominated.	High	
2. Funding and Finance					
2.1	Conduct natural capital valuations for each of the conservation units (CUs) to demonstrate the value that they provide to a multitude of beneficiaries, by utilizing an ecosystem service assessment (ESA) framework which identifies the linkages between the ecological asset (including CAMI species populations and habitats), the subsequent delivery of ecosystem services and the benefits	GOs, scientific institutions, NGOs, CMS Secretariat	Valuations produced.	High	GBF Target 14

Activities to be implemented by 2032		Responsible	Indicator	Priority ²	Related programmes
	provided to society, building on existing valuations, where available.				
2.2	Develop national financing strategies to identify suitable financial mechanisms to implement conservation measures, including sustainable land use, contained in this Work Programme, through a systematic method and based on the valuations conducted under 2.1, taking into consideration the CMS/BfN <u>Report on the Identification of Funding Options for the Implementation of the CAMI</u> .	GOs, NGOs, CMS Secretariat (if needed)	Financial strategies and solutions approved by stakeholders. Resources mobilized.	High	GBF Target 19
2.3	Conduct an online workshop for CAMI Range States, concerned stakeholders and NGOs to present the findings of the <u>Report on the Identification of Funding Options for the Implementation of the CAMI</u>	CMS Secretariat, GOs, NGOs	Online workshop	High	
2.4	Provide in-depth training on conservation economics and finance, highlighting the financial solutions identified in the financing strategies (see Activity 2.2) to support conservation in the CUs.	NGOs, GOs	Training held, report prepared	High	GBF Target 20
2.5	Develop joint funding proposals and innovative financial mechanisms, involving relevant Range States for the conservation of CUs, identified in this WP and submit to relevant donors.	GOs, NGOs, in consultation with SFPs, CMS Secretariat (if needed)	New projects funded	High	
3. Legislation					
3.1	Integrate relevant activities of the CAMI WP into appropriate national legislation/policies and National Biodiversity Strategies and Action Plans (NBSAPs), and report to the CMS Secretariat on this activity within one year of the WP's adoption.	GOs	CAMI WP integrated in relevant national legislation and NBSAPs and the report on this submitted to the CMS Secretariat.	High	GBF Target 23
3.2	Join the CMS National Legislation Programme (NLP), if not already done so, by submitting the NLP questionnaire.	CMS Parties	At least three Parties submit NLP questionnaires to CMS Secretariat	High	

Activities to be implemented by 2032		Responsible	Indicator	Priority ²	Related programmes
3.3	Prepare an evaluation of potential benefits of listing CAMI species (and lower taxa) that are already listed on CMS Appendix II, also on Appendix I, and submit relevant proposals to CMS COP, where necessary.	GOs, NGOs, scientific institutions	Evaluation conducted, proposal submitted to COP16/COP17, where necessary	Medium	
3.4	Submit cases on possible implementation matters affecting CAMI species listed on Appendix I to the CMS Secretariat within the CMS Review Mechanism, also including information about impacts of these activities on Appendix II species.	GOs, NGOs	Cases submitted, if implementation issues arise.	High	
3.5	Use <u>the IUCN Guidelines for Conserving Connectivity through Ecological Networks and Corridors</u> and examples from the region (e.g. developed within <u>CAMCA</u> project in Kyrgyzstan) to define ecological corridors and integrate such corridors into national legislation to implement appropriate measures to conserve CAMI species, building on experience in the region and beyond.	GOs, NGOs	IUCN Guidelines used, methodology for defining eco corridors established and legislation on Eco corridors developed in all CAMI Range States	High	GBF Target 2, 14, SPMS Goal 2
3.6	Prevent barriers to migration, where possible, through: <ul style="list-style-type: none"> a) integrating the <u>Guidelines on Mitigating the Impact of Linear Infrastructure and Related Disturbance on Mammals in Central Asia</u> into national legislation, in particular by requiring a rigorous EIA process before the granting of construction permission and the use of the Mitigation Hierarchy in line with internationally recognized standards IFC1 and IFC6 b) requiring impact assessment procedures for projects affecting CAMI species to include consultations with the CMS Secretariat and CAMI SFPs, as well as to take into account recommendations of the <u>Central Asian Mammals Migration and Linear Infrastructure Atlas</u> c) requiring impact assessments for planned fences, e.g. along roads and railroads. 	GO, NGOs, scientific institutions	Legislation with clear instructions for impact assessment of planned projects falling within CAMI species range to use the tools mentioned and consult with CMS Secretariat.	High	GBF Target 14
3.7	Adopt and implement national legislation in accordance with Articles III.5 and V.1 of CMS, to enhance measures to address illegal take of CAMI species, in particular:	GOs, NGOs, IGOs	Updated legislation, guidelines, roadmap	High	SPMS Goal 5

Activities to be implemented by 2032		Responsible	Indicator	Priority ²	Related programmes
	<ul style="list-style-type: none"> a) strengthen enforcement measures and penalties proportional to the incident and type of actors involved to deter illegal hunting, possession, use and trade of CAMI species b) Introduce incentives (financial and non-) for rangers, border guards and civil society for reporting incidents of illegal take, possession and trade; c) invest fines in conservation; d) grant enforcement powers to community rangers; and e) strictly monitor and control online platforms promoting illegal wildlife trade. 				
3.8	In cases of abundant populations of CMS Appendix II-listed species and in accordance with CMS Article V.1, consider preparing national management plans for the species in a transparent way, involving all relevant stakeholders and ensuring benefits to local communities from any sustainable use of the species.	GOs, scientific institutions, NGOs	Conservation and management plans developed for abundant populations of Appendix II species, in accordance with <u>Resolution 14.17 on Community Participation and Livelihoods</u> and using recommendations of the study <u>Potential for Community-based Wildlife Management in Central Asia</u> , where relevant.	High	GBF Target 5, 9, SPMS Goal 3, 4
3.9	To support implementation of CMS Article V.1, establish robust and clear procedures for scientifically set quotas for sustainable taking of migratory species that address risks of compounded harvesting pressure, ensuring that transboundary populations of CAMI species are not overexploited by different countries due to lack of coordinated assessment/decision making.	GOs, scientific institutions, CITES	Sustainable quota setting decrees for CAMI species that can be sustainably used'.	High	SPMS Goal 5
3.10	Where relevant, bring species assessment procedures for national Red Books in line with the <u>Guidelines for Using the IUCN Red List Categories and Criteria</u> at the national level.	GOs, scientific institutions, NGOs	Manual/guide	Medium	

Activities to be implemented by 2032		Responsible	Indicator	Priority ²	Related programmes
3.11	In cases of Appendix II-listed species, allow limited (in time and quantities) extractive use of selected National Red Book-listed species if it can be shown in a scientifically robust way that this will contribute to the conservation of the species, as well as towards the Global Biodiversity Framework Targets 4, 5 and 9.	GOs, scientific institutions, NGOs	Legislation/Quota decree	Medium	GBF Target 4,5,9, SPMS Goal 3
3.12	Develop and promote policies, regulations and tools and build capacity of decision makers and planners for sustainable rangeland management that enables the coexistence of people, livestock and wildlife.	GOs, NGOs	Number of national policies, regulations and tools.		GBF Target 4,20; SPMS Goal 4
3.13	Develop and enact legislation to allow for the management of protected and conserved areas (including hunting areas) by private and/or community-based organizations, where it does not exist.	GOs, NGOs	Legislation proposed	Medium	GBF Target 22
4. Transboundary Cooperation					
4.1	Support CAMI Range States in their efforts to enter into bilateral/multilateral agreements to strengthen conservation of specific transboundary areas, based on the CUs identified in the WP.	CMS Secretariat, GOs, NGOs, IGOs, GSLEP	Agreements, Memoranda of Understanding Work Programmes to support MOU implementation developed and implementation initiated.	High	GBF Target 12, SPMS Goal 5
4.2	Establish inter-agency working groups involving both border security and nature protection agencies for regular inter-agency cooperation and information exchange on conservation issues at the national and transboundary levels to enhance transboundary conservation of natural ecosystems and migratory species.	GOs, NGOs, IGOs	Working groups established and operational for at least 3 CUs	Medium	GBF Target 12, 20; SPMS Goal 5, Ashgabat communique; Recommendations of technical guidance for NBSAP
4.3	Leverage existing capacity-building programmes to develop and deliver wildlife conservation training for border guards in national languages, clarifying their roles and responsibilities with regard to wildlife conservation, and, where possible,	CMS, GOs, NGOs, IGOs, CITES	Training materials produced and used in	High	GBF Target 20, SPMS Goal 4,

Activities to be implemented by 2032		Responsible	Indicator	Priority ²	Related programmes
	collaborate with national and international organizations and development partners.		trainings conducted for at least three CUs.		Ashgabat Communiqué ,
4.4	Support recognition of selected border areas as OECMs.	GOs, NGOs, IGOs	At least two border areas in CUs recognized as OECM by national governments and monitoring programmes are set up; Task forces established for at least 2 CUs; Inter-agency information exchange takes place through calls and meetings.	High	GBF Target 3 Ashgabat Communiqué
4.5	Update the report “ Transboundary conservation hotspots for the Central Asian Mammals Initiative ” by 2028 by including species listed by CMS COP14 and, if relevant, by CMS COP15, submit it to CAMI Range States and the CMS Standing Committee for their endorsement. Once endorsed, reflect relevant changes in the activities for specific CUs of this WP.	CMS Secretariat, GOs, NGOs	Updated report published in 2028. CAMI WP updated to include new species and activities for them, if needed.	Medium	GBF Target 20
5. Ecological Connectivity					
5.1	Monitor plans for infrastructure development that are likely to impact CMS-listed species on a frequent basis (every 6 months) and inform the CMS Secretariat well in advance of the approval process, to obtain guidance from the CMS Secretariat and CAMI SFPs.	CMS Parties and CAMI Range State Focal Points, NGOs	Information submitted to CMS Secretariat before the project is approved	High	GBF Target 20, 23 SPMS Goal 2
5.2	Conduct online meetings to facilitate discussion of the issues reported in 5.1 and identification of solutions involving infrastructure developers and planners, the CMS Global Partnership on Ecological Connectivity, CAMI Species Focal Points (SFP) and NFPs of CAMI Range States.	CMS Secretariat, SFPs, NFPs, other relevant GOs, NGOs, scientific institutions	At least one online meeting conducted, protocols produced.	High	GBF Target 20, 23 SPMS Goal 2
5.3	Compile available information, in cooperation with partners, on mitigation solutions to address impacts of infrastructure on CMS-listed species, taking into account species-specific	CMS, GOs, NGOs, scientific institutions	Report outlining available mitigation measures for various types of linear	High	GBF Targets 2, 20, 23, SPMS Goal 2

Activities to be implemented by 2032		Responsible	Indicator	Priority ²	Related programmes
	requirements, landscapes and types of barriers in the CAMI region and lessons learned; and identify those species that need further analysis/research.		infrastructure and species, their effectiveness and lessons learned, and species and solutions requiring further research.		
5.4	Explore options to integrate the CAMI Atlas into the Integrated Biodiversity Assessment Tool (IBAT) and national mapping systems and portals (e.g. Tabigat in Kazakhstan)	CMS Secretariat, NGOs, GOs	CAMI Atlas integrated into IBAT and other systems	Medium	GBF Target 20
5.5	Conduct capacity-building workshops in line with CMS COP decisions on impacts of linear infrastructure, incorporating available CMS and other tools, such as atlases and guidelines.	CMS, GO, NGOs, scientific institutions	At least one workshop is conducted for the region bringing together relevant actors, including infrastructure planners and funders.	High	GBF Target 20, 23, SPMS Goal 2, 4,
5.6	Plan and create Protected Areas, OECMs and eco-corridors to ensure habitat connectivity for CAMI species and to facilitate conservation of larger areas of their habitat (see Activity 6.2).	GOs, NGOs, scientific institutions	Number of protected areas enlarged, OECMs and ecological corridors between protected areas established.	High	GBF Target 2, 3, SPMS Goal 2,
5.7	Update the Central Asian Mammals Migration and Linear Infrastructure Atlas by 2032 including new information on changes in infrastructure and on species distribution, if possible, aligning with IUCN Red List mapping standards and processes, e.g. in cooperation with GIUM and utilizing data obtained by international and national researchers.	CMS, GOs, NGOs	Atlas updated by 2032	Medium	GBF Target 1, 2, SPMS Goal 2
6. Protected and Conserved Areas					
6.1	Apply IUCN's various guidelines to promote good practices relating to identifying, reporting, monitoring and strengthening OECMs in support of GBF Target 3.	CMS, NGOs, GOs, IUCN WCPA	Workshop on OECMs	High	GBF Target 3
6.2	Support CAMI Range States in efforts to achieve the GBF Target 3's 30 x 30 goal to ensure that the protected and	GOs, NGOs, IUCN WCPA	Meetings/communication, progress reported to CBD and CMS	High	GBF Target 3; Decision No. 11, Council of Heads

Activities to be implemented by 2032		Responsible	Indicator	Priority ²	Related programmes
	conserved area network is relevant for the range and movements of CAMI species.		Secretariats. IUCN Green List		of State of the Shanghai Cooperation Organization (4 July 2024)
6.3	Assess the extent to which the management plans of protected areas integrate climate change considerations, including adaptation measures (e.g. protecting water sources for wildlife, expanding protected areas).	GOs, NGOs, scientific institutions	Report on identified climate change-related challenges and measures implemented produced.	Medium	GBF Target 3, SPMS Goal 1
7. Illegal Hunting, Possession and Trade					
7.1	In collaboration with CMS' Global Initiative on Illegal and Unsustainable Take of Species, identify priorities for increasing capacity of Parties for monitoring and enforcement of national legislation and regulations and other measures pertaining to the illegal taking of CAMI species.	CMS Secretariat, CITES, GOs, NGOs	Report and recommendations by 2027.	High	GBF Targets 4, 5, 9, 20, SPMS Goal 3, 4
7.2	Increase and strengthen the wages, prestige, social security and technical capacity of rangers and other relevant enforcement personnel to counteract illegal hunting, possession, use and trade of CAMI species, including the provision of training and equipment and scaling up the use of SMART.	GOs, NGOs, IGOs, CITES	Increased satisfaction with wages, prestige, social security indicated through the results of an anonymous survey. Improved equipment of rangers, including computers, mobile phones and SMART.	High	GBF Targets 4, 5, 9, 20, SPMS Goals 3, 4
7.3	Introduce new technologies, methods and tools for enforcement, where not yet in use (including SMART, wildlife detection dogs, portable DNA toolkits; point to point security camera network, LoRa network or satellite powered AI camera traps), whichever are locally most practical.	GOs, NGOs, IGOs, CITES, scientific institutions	At least one new technology introduced in each CAMI Range State.	High	GBF Targets 4, 5, 9; SPMS Goal 3
7.4	Monitor and measure anti-poaching efforts and impacts through SMART and use these analyses to inform improved anti-poaching strategies.	GOs, NGOs	SMART reports.	High	GBF Targets 4, 5, 9, SPMS Goal 3

Activities to be implemented by 2032		Responsible	Indicator	Priority ²	Related programmes
7.5	Conduct regular surveys to understand the level and drivers of wildlife poaching, using scientifically sound methods to develop effective anti-poaching strategies. Share survey formats whenever possible.	scientific institutions, NGOs	Availability of survey reports and anti-poaching strategies for each Range State.	Medium	GBF Targets 4, 5, 9; SPMS Goal 3
7.6	Establish centralized national databases and related procedures on poaching cases and illegal trade to allow for an estimation of the impact on populations of CAMI species.	GOs, NGOs	Databases and procedures established.	Medium	GBF Target 4, 5, 9; SPMS Goal 3
7.7	Develop and distribute information materials about wildlife products and provide training to border guards, customs officers and police to strengthen their capacity in detecting illegal wildlife trade.	NGOs, GOs, CITES, UNODC, scientific institutions	Number of trainings; materials available in all Range States.	High	GBF Targets 4, 5, 9, 20, SPMS Goal 3, 4
7.8	Encourage the deployment of sufficient numbers of wildlife detection dogs and DNA toolkits, enabling customs officers, border guards, and police to effectively identify and intercept trade in wildlife products and derivatives.	GOs, NGOs	Number of dogs deployed, and DNA toolkits used at border / customs posts across Range States.	High	GBF Targets 4, 5, 9, SPMS Goal 3
7.9	Develop and implement whistle blower policies / mechanisms to ensure the safety of informants who provide information about violations of wildlife legislation (e.g., poaching incidents, illegal trade).	GOs	Policies and mechanisms implemented.	Medium	GBF Targets 4, 5, 9, SPMS Goal 3
7.10	Conduct training for customs officials to detect illegal wildlife trade and improve law enforcement.	GOs, NGOs, scientific institutions	Conduct at least one training in each country by 2027, starting from Northern and Inner Tian Shan.	High	
8. Land use and Human-wildlife Conflict and Coexistence					
8.1	Build the capacity of decision-makers in applying the <u>IUCN SSC Guidelines on Human-wildlife Conflict and Coexistence</u> , and the recommendations of the CMS report on the Potential for Community-based Wildlife Management in Central Asia.	CMS, NGOs, GOs, IUCN SSC HWCCSG SuLi SG	At least one workshop organized by 2027.	High	GBF Targets 4, 20, 22 SPMS Goal 4
8.2	Conduct workshops for biodiversity-inclusive landscape-scale land use planning, involving relevant stakeholders across agencies and sectors and including local	GOs, NGOs, scientific institutions	At least one planning workshop conducted in each country.	High	GBF Target 1, SPMS Goal 1, Regional Strategy

Activities to be implemented by 2032		Responsible	Indicator	Priority ²	Related programmes
	communities, to take into consideration priority habitats for CAMI species.				for Drought Management and Mitigation in Central Asia for 2021-2030; Regional Environmental Programme for Sustainable Development of Central Asia (REP4SD CA) for 2020-2030,
8.3	Organize exchange of experiences between specialists and practitioners from the CAMI region and other countries on managing wildlife and human-wildlife conflict between local communities and migratory species.	CMS, GOs, NGOs, IUCN SSC	Exchange visits organized for decision-makers and practitioners.	High	GBF Targets 5, 22
8.4	Conduct research and pilot studies through participatory processes with the landowners concerned to investigate the potential effectiveness and sustainability of financial and non-financial incentives to support those willing to coexist with wildlife and reduce retaliatory / preventive wildlife destruction.	NGOs, GOs, scientific institutions, IUCN SSC	Report published, scientific publications	High	GBF Targets 4, 5
8.5	Conduct assessments of the level of impacts caused by CAMI species to farmers and landowners, and clearly indicate the levels of uncertainty and variability surrounding these estimates.	scientific institutions, NGOs, IUCN SSC	Report published, scientific publications	High	GBF Targets 5, 21
8.6	Investigate potential mechanisms to avoid or reduce negative impact on domestic animals, crops, beehives, hayfields, pastures and other properties caused by CAMI species.	GOs, NGOs, scientific institutions, IUCN SSC	Report published, scientific publications	High	GBF Targets 4, 21
8.7	Monitor attitudes of local people towards conservation activities for and the willingness to coexist with CAMI species using local-level social research including participatory	NGOs, scientific institutions, IUCN SSC	Social research reports and publications	Medium	GBF Target 22

Activities to be implemented by 2032		Responsible	Indicator	Priority ²	Related programmes
	community monitoring and adjust management plans accordingly.				
8.8	Where water is a main source of conflict, assess the availability of water and grazing grounds for CAMI species and develop, as necessary and scientifically justified, measures to improve their conservation, including the safeguarding of water points, artificial and natural, and livestock exclusion zones.	GOs, NGOs, scientific institutions	Assessment reports and recommendations, review of scientific publications.	High	GBF Target 4
8.9	Support and expand incentive-based and conservation-linked livelihood-improvement projects and develop new programmes in all appropriate parts of the CAMI range.	NGOs, GOs	Livelihood improvement projects, e.g. improving local schools, infrastructure linked to conservation of CAMI species in place.	High	GBF Targets 21, 22
8.10	Conduct feasibility assessments of developing community-based wildlife-related tourism offers taking into account <u>Resolution 14.17 on Community Participation and Livelihoods</u> , the recommendations of the study Potential for Community-based Wildlife Management in Central Asia, the national financing strategies (Activity 2.2), where relevant, and other guidance into account.	NGOs, scientific institutions, GOs	Assessments available	Medium	GBF Target 22, Decision No. 11, Council of Heads of State of the Shanghai Cooperation Organization (4 July 2024),
8.11	Pending the outcome of Activity 8.10, develop and implement funding programmes to support the creation of community-based wildlife tourism offers in the CAMI Range States through initial investment portfolios, promotion, capacity-building and pledged returns of tourism revenues as conservation investments.	GOs, NGOs	Funding programmes in place in at least three countries.	Medium	GBF Targets 22 and 20; SPMS Goal 4

Activities to be implemented by 2032		Responsible	Indicator	Priority ²	Related programmes
9. One Health					
9.1	Integrate the One Health approach into national and regional legislation and policy frameworks.	GOs, NGOs, health organizations	Number of legislation and policy frameworks with integrated One Health approach.	High	GBF Targets 5, 23
9.2	Strengthen or establish rapid response teams and build their capacity to document, examine and sample carcasses of wildlife when increased mortality is observed.	GOs, NGOs, scientific institutions	Rapid response teams established, and their capacity built.	High	GBF Targets 4, 5 and 20; SPMS Goal 4
9.3	Use existing platforms, such as the World Animal Health Information System (WAHIS) and WHO's One Health Initiative, UNEP/CMS Working Group on Migratory Species and Health, and establish transboundary contact groups on wildlife disease to enable timely cross-border information exchange on disease outbreaks and coordinated actions.	GOs, NGOs, scientific institutions	Existing platforms used, relevant contact groups established for CUs by the end of 2029.	High	GBF Targets 4, 5 and 20; SPMS Goal 5
9.4	Support the targeted vaccination of livestock and herder dogs against transmittable diseases where they are sharing the same landscape with CAMI species.	GOs, NGOs, scientific institutions, private sector	Vaccination regulations developed and enforced. Percentage of vaccinated livestock in CU by the end of 2032.	High	GBF Target 4, 5
9.5	Identify and map important wildlife water points and explore solutions to separate their use between wildlife and livestock, taking into account projected changes in water availability due to climate change.	GOs, NGOs, local communities	Maps of important wildlife water points. Analysis of solutions to separate water points between wildlife and livestock available. A workshop on the solutions to separate wildlife and livestock at water points.	High	GBF Target 4
9.6	Strengthen surveillance for emergence or re-emergence of diseases and potential impacts of drugs used for veterinary purposes, and chemicals (e.g., at water points) through harmonized monitoring and sampling of livestock and wildlife	GOs, NGOs, scientific institutions	Surveillance reports and harmonized protocols	High	GBF Target 4

Activities to be implemented by 2032		Responsible	Indicator	Priority ²	Related programmes
	populations (<u>Resolution 11.15, Preventing Poisoning of Migratory Birds</u>)				
10. Species Monitoring and Research					
10.1	Collect data on movements and migrations of CAMI species using appropriate technology (including genetic analysis, camera trapping, satellite tracking and remote sensing), with a particular focus on improving the understanding of impacts of infrastructure developments, climate change, and environmental and land use change and with the goal to inform decision-making, aiming to maintain connectivity of wildlife habitat and its migratory behaviour, and store this data in appropriate online databases as well as use them for Activity 5.7.	GOs, NGOs, database holders	Relevant databases established and used by implementers of Activity 5.8.	High	GBF Target 19, SPMS Goal 2
10.2	Assess CAMI species population sizes, distribution, and where feasible also reproduction and sex ratios regularly, using the best available science to obtain reliable and comparable estimates to assess population trends and inform conservation and, where relevant, management policies.	GOs, NGOs, scientific institutions	Population data reports and publications (e.g., scientific publications) available	High	GBF Target 4, SPMS Goal 5
10.3	Agree - at online or in-person meetings between specialists and conservation authorities from Range States - on standardized methodologies and guidelines; survey designs, timing and locations, to be applied for monitoring species and ecosystems within and across all CAMI Range States, using specific tools such as SMART and establish the necessary systems to apply them at local, national and transboundary levels.	GOs, NGOs, scientific organizations	Systems established, standards harmonized, data shared and applied.	High	GBF Target 17 and 20
10.4	Train rangers, border guards (where applicable), and staff of scientific institutions in the use of standardized guidelines / manuals for monitoring transboundary populations, as necessary.	GOs, NGOs, IUCN SSC, scientific institutions	Guidelines / manuals available and training reports	High	SPMS Goals 4 and 5
10.5	Map existing data-sharing platforms and potential partners to store and exchange camera-trap and other data in relation to CAMI species.	GOs, NGOs, IUCN SSC, scientific institutions	Data-sharing agreements and databases in place.	High	GBF Target 20

Activities to be implemented by 2032		Responsible	Indicator	Priority ²	Related programmes
10.6	Facilitate exchange of information, data and experience between the actors at different levels across the Range States	GOs, NGOs, scientific institutions	Meetings, webinars held to support information exchange within CUs, establish information exchange mechanisms and produce joint publications	High	GBF Target 20, 17 19
10.7	Update outdated IUCN Red List assessments for CAMI species, e.g., Wild Camel, Goitered Gazelle.	NGOs, scientific institutions	Updated IUCN Red List assessments for CAMI species	High	IUCN Red List Assessments
10.8	Conduct species climate vulnerability assessments based on climate change predictions and the collected habitat and species occurrence information and consider the outcomes in conservation planning.	NGOs, scientific institutions	Species vulnerability assessments conducted, published and posted on CMS website and used in conservation planning by relevant stakeholders	Medium	GBF Targets 1, 2 and 4
11. Education, Community and Communication					
11.1	Raise awareness on threats affecting CAMI species and necessary behavioural change as well as planned or existing conservation measures among relevant sectors, including decision-makers, local communities and the general public, in a coordinated manner, in all relevant Range States of transboundary areas.	GOs, NGOs, scientific institutions.	Number of awareness-raising activities at national and international levels.	High	GBF Target 1; SPMS Goal 5
11.2	Continue to develop, update and widely implement a range of educational activities and materials on wildlife ecology and conservation for children in CAMI Range States.	GOs, NGOs, scientific institutions, local communities	Educational activities and materials available and distributed.	Medium	GBF Target 1, SPMS Goal 4
11.3	Develop and implement awareness-raising campaigns for investors, companies and governments, whose activities, or the activities of whose employees, could negatively impact CAMI species.	GOs, NGOs, scientific institutions	Materials available and distributed.	Medium	GBF Target 1

Activities to be implemented by 2032		Responsible	Indicator	Priority ²	Related programmes
11.4	Develop and widely implement awareness-raising campaigns, through all relevant media, to raise the profile of CAMI species and highlight the benefits that accrue to people through their conservation at local, national and international levels.	CMS Secretariat, NGOs, scientific institutions, GOs	Campaign developed and launched by end of 2026	High	GBF Target 1, SPMS Goal 4
11.5	Produce and disseminate a brochure and a promotional video to raise awareness and understanding about the importance of the Central Asian region for CAMI species (and potentially also birds) for different audiences.	CMS Secretariat, NGOs, scientific institutions, GOs	Video and brochure featuring CAMI and other CMS-listed species of the region produced and promoted online.	High	GBF Target 1
11.6	Conduct side events at the meetings of COPs of CMS, CBD, UNCCD, UNFCCC and other relevant meetings to raise awareness of the CAMI WP and its implementation.	CMS Secretariat, NGOs, GOs	Side events at CBD / CITES / UNCCD / UNFCCC COPs	Medium	GBF Target 1
11.7	Publish an annual CAMI newsletter in two languages and, if possible, other languages in cooperation with the CMS Secretariat.	CMS Secretariat, GOs, NGOs, scientific institutions, GOs	Newsletter published once a year.	Low	GBF Target 1
Conservation Units (CUs)					
12. Western and Southern Ustyurt (Turkmenistan, Uzbekistan, Kazakhstan) - 1					
Species: Asiatic Wild Ass, Goitered Gazelle, Persian Leopard, Urial, Saiga					
<u>Range-Wide Strategy for the Conservation of the Persian Leopard 2023-2032</u>					
<u>Range-wide Action Plan for the Asiatic Wild Ass 2024 - 2033</u>					
<u>Medium-Term International Work Programme for the Saiga Antelope 2025-2030</u>					
12.1	Fully implement <u>the Memorandum of Cooperation for Wildlife Conservation on the Ustyurt Plateau and its Roadmap</u>	GOs, NGOs, scientific institutions	Implementation Reports	High	
12.2	Conduct a meeting to facilitate development of avoidance, compensation or mitigation of impact of industrial infrastructure in particular related to wind and solar power development on CMS-listed species, including CAMI and avian species.	GOs, NGOs, scientific institutions, private sector	Meeting either in person or online conducted, identified and agreed measures at the latest by 2027.	High	GBF Targets 1, 3, 4, 14, 15

Activities to be implemented by 2032		Responsible	Indicator	Priority ²	Related programmes
12.3	Implement the measures agreed in 12.2	GOs, NGOs, scientific institutions, CMS Secretariat	Measures implemented before infrastructure is built.	High	GBF Targets 1, 3, 4, 14, 15
12.4	In cooperation with the Coordinator of the Roadmap, support organization of the Second Meeting of the Parties to the Ustyurt Memorandum in 2030.	CMS Secretariat, GOs, NGOs, scientific institutions	Support to Meeting organization provided.	Medium	GBF Targets 1, 3, 4, 14
12.5	Conduct a feasibility study for the reintroduction of Saiga in Garabogazgol Ustyurt (Turkmenistan) and in Sarykamysh area (Uzbekistan)	GOs, NGOs, scientific institutions, IUCN SSC SGs	Feasibility study conducted.	Medium	GBF Target 4
12.6	Conduct a feasibility study for the reintroduction of Persian Leopard in Ustyurt State Nature Reserve (Kazakhstan).	GOs, NGOs, scientific institutions, IUCN SSC SGs	Feasibility study conducted.	Medium	GBF Target 4
13. Northern and Eastern Ustyurt (Kazakhstan, Uzbekistan) - 2					
Species: Goitered Gazelle, Asiatic Wild Ass (re-introduced), Saiga, Urial					
<u>Range-wide Action Plan for the Asiatic Wild Ass 2024 - 2033</u>					
<u>Medium-Term International Work Programme for the Saiga Antelope 2025-2030</u>					
13.1	Strengthen bilateral cooperation between Kazakhstan and Uzbekistan within the Medium-Term International Work Programme for the Saiga Antelope 2025-2030 (Activities 9.1-9.8), the Range-wide Asiatic Wild Ass Action Plan and the Memorandum of Cooperation for Wildlife Conservation on the Ustyurt Plateau and its Roadmap (see 12.1-12.6 above).	GOs, NGOs, scientific institutions	Official national documents prepared and ratified, National Reports on the implementation of the Memorandum available online	High	GBF Target 1
13.2	Continue re-introduction of the Asiatic Wild Ass (Kulan) in Uzbekistan by applying improved methodologies, such as the use of adaptation pre-release enclosures and better post-release monitoring by satellite tracking.	GOs, NGOs, scientific institutions	Reintroduction report, scientific publications	Medium	GBF Target 4

Activities to be implemented by 2032		Responsible	Indicator	Priority ²	Related programmes
13.3	Develop a programme of re-stocking of Goitered Gazelle population using animals from the Bukhara Special Center 'Jeyran'.	GOs, NGOs, scientific institutions	Programme approved and implementation of the re-stocking.	Medium	GBF Target 4
13.4	Create a network of watering points (green wells) for Goitered Gazelles, Saiga and Asiatic Wild Ass and other wildlife among core habitat and migration routes.	Os, NGOs, scientific institutions	Network in place in core habitats and on migration routes and use by wildlife proven through camera traps.	High	GBF Target 4
13.5	Assess the feasibility of establishing transboundary ecotourism tours.	GOs, NGOs, scientific institutions, private sector	Feasibility study conducted	Medium	Memorandum of Cooperation for Wildlife Conservation on the Ustyurt Plateau and its Roadmap
14. Aralkum / North-Western Kyzylkum Desert (Kazakhstan, Uzbekistan) - 3					
Species: Asiatic Wild Ass, Goitered Gazelle, Saiga					
<u>Range-wide Action Plan for the Asiatic Wild Ass 2024 - 2033</u>					
<u>Medium-Term International Work Programme for the Saiga Antelope 2025-2030</u>					
14.1	Continue monitoring of Asiatic Wild Ass population in and around Barsa-Kelmes State Strict Nature Reserve (SSNR) (Kazakhstan).	GOs, NGOs, scientific institutions	Survey reports, scientific publications	High	GBF Target 4
14.2	Continue monitoring of Goitered Gazelle and Saiga populations in the Aralkum National Park, Barsa-Kelmes SSNR and Northwest Kyzylkum, and assess the impacts of current afforestation, oil and gas development on these.	GOs, NGOs, scientific institutions	Survey reports, scientific publications	High	GBF Target 4
14.3	Implement SMART patrolling in Aralkum National Park and Barsa-Kelmes SSNR	GOs, NGOs, scientific institutions	SMART used in these areas.	Medium	GBF Target 4
14.4	Conduct a feasibility study for developing a protected area in Kazakhstan next to Akpetki part of Sudochie-Akpetki zakaznik in Uzbekistan.	GOs, NGOs, scientific institutions	Feasibility study conducted.	High	GBF Target 3

Activities to be implemented by 2032		Responsible	Indicator	Priority ²	Related programmes
14.5	Evaluate the possibilities for creating new protected areas and for supporting conservation measures in Barsa- Kelmes SSNR and Aralkum National Park including the potential for a transboundary protected area.	GOs, NGOs, scientific institutions	New zoning / maps, assessment reports	Medium	GBF Target 3; SPMS Goal 5
14.6	Identify suitable locations for border fence crossings of wildlife, facilitate opening of the border crossings and implement monitoring of the border fence crossings by wildlife with camera traps from the Kazakh and Uzbek sides to determine wildlife movement and main crossing sites and inform the creation of potential new sites.	GOs, NGOs, scientific institutions	Border crossings actively used by CAMI species proven by camera trap data	High	GBF Target 14
14.7	Work with the oil and gas industry on strategies to mitigate impacts of their activities in the region in accordance with international standards IFC6, Guidelines for Addressing the Impact of Linear Infrastructure on Large Migratory Mammals in Central Asia etc.	GOs, NGOs, scientific institutions	Recommendations developed by 2027 and interventions implemented by 2028	High	GBF Target 14
14.8	Assess the feasibility of community-based eco-tourism including CAMI species observation tours and provide support for respective business development in most promising locations.	GOs, NGOs	Feasibility study carried out by 2027	Medium	GBF Target 21
14.9	Assess the necessity and feasibility for the reintroduction of the Asiatic Wild Ass in Aralkum.	GOs, NGOs, scientific institutions	Feasibility study completed by 2027.	Medium	GBF Target 4
14.10	Conduct a feasibility study for the reintroduction of Cheetah in line with the Ustyurt Memorandum Roadmap Objective 6.1 with facilitation of the CMS Secretariat.	GOs, NGOs, scientific institutions, CMS Secretariat	Feasibility study conducted.	Medium	GBF Target 4

Activities to be implemented by 2032		Responsible	Indicator	Priority ²	Related programmes
15. Kopetdag (Iran, Turkmenistan) - 4					
Species: Asiatic Cheetah, Asiatic Wild Ass, Goitered Gazelle, Lynx, Pallas's Cat, Persian Leopard, Urial					
<u>Range-Wide Strategy for the Conservation of the Persian Leopard 2023-2032</u>					
<u>Range-wide Action Plan for the Asiatic Wild Ass 2024 - 2033</u>					
15.1	Organize a workshop between the relevant government authorities initiated by the Department of Environment of Iran and the Ministry of Environmental Protection of Turkmenistan with a view of strengthening transboundary collaboration between the bordering protected areas on CAMI species monitoring and conservation.	GOs, NGOs, scientific institutions	Workshop conducted and report prepared by the end of 2026.	High	GBF Target 1; SPMS Goal 5
15.2	Identify corridors for transboundary wildlife movements, especially for Persian Leopard, Asiatic Cheetah, Urial, Goitered Gazelle and Asiatic Wild Ass, in collaboration with the border security services.	GOs, NGOs, scientific institutions	Scientific surveys conducted bi-annually starting in 2027 and reports published	High	GBF Target 4; SPMS Goal 2, 5
15.3	Convene a meeting with environmental, border and security authorities to discuss the feasibility of creating wildlife passages in the parts of the border fence which are most intensively used by animals (as identified by 15.2) to enable ecological connectivity for the affected CAMI species.	GOs, NGOs, scientific institutions	Monitoring report published and one workshop held by the end of 2027.	High	GBF Target 2, SPMS Goal 2
15.4	Strengthen anti-poaching patrols and measures using SMART and other innovative technologies such as satellite- and LORA-powered camera traps.	GOs, NGOs	Quarterly SMART and camera trapping reports published for at least one site	High	GBF Target 4, SPMS Goal 3
15.5	Enforce evidence-based grazing bans and restrictions in borderline protected areas.	GOs, NGOs, scientific institutions	Reports and official enforcing documents on no-grazing zones; absence of livestock in these PAs.	High	GBF Target 4
15.6	Organize a series of practical workshops for herders on applying the <u>IUCN SSC Guidelines on Human-Wildlife Conflict and Coexistence</u> (HWCC) and facilitate implementation of conflict reduction tools and practices.	GOs, NGOs, IUCN SSC, scientific institutions	First 2 workshops in Iran and Turkmenistan held by 2027.	High	GBF Target 20

Activities to be implemented by 2032		Responsible	Indicator	Priority ²	Related programmes
15.7	Map existing water points for CAMI species and assess the necessity for building additional artificial water points for livestock to separate wildlife and livestock.	GOs, NGOs, scientific institutions	Water points mapped and monitored using camera traps in sections of the CU by the end of 2026.	High	GBF Target 4
16. Koytendag / Kugitang (Turkmenistan, Uzbekistan) - 5 Species: Goitered gazelle, Lynx, Urial					
16.1	Coordinate CAMI species monitoring and data sharing between Surkhan SSNR and Koytendag SNR.	GOs, scientific institutions, hunting grounds	Coordinated surveys and sharing of data protocols implemented by the end of 2027.	High	GBF Target 4
16.2	Continue using SMART in Surkhan SSNR and Koytendag SNR and strengthen patrol frequency.	GOs, NGOs, scientific institutions	SMART reports published quarterly.	High	GBF Target 4
16.3	Submit a request to the UNESCO World Heritage Commission for a preliminary assessment of the feasibility of the nomination of “Mountain Ecosystem of Koytendag” for the UNESCO World Heritage List.	GOs, NGOs, scientific institutions	Request submitted by 15 September 2026.	High	GBF Target 1
16.4	If the response from UNESCO is positive, submit a full nomination dossier to the UNESCO World Heritage Commission.	GOs, NGOs, scientific institutions	Nomination dossier submitted at the latest by February 2028.	High	GBF Target 1
16.5	Enforce and monitor the full ban on livestock (cows, horses, donkeys, and sheep) presence inside Koytendag SSNR through SMART application, Google Maps and camera traps.	GOs	Full ban in place by the end of 2026; SMART reports and camera trap pictures	High	GBF Target 4
16.6	Set up and enforce strictly controlled grazing in the Hojeypil and Hojagaraul Wildlife Sanctuaries (Turkmenistan).	GOs, local communities	Legislation adopted regulating grazing in wildlife sanctuaries by the end of 2027	High	GBF Target 4

Activities to be implemented by 2032		Responsible	Indicator	Priority ²	Related programmes
16.7	Improve the rangelands adjacent to the Hojeypil and Hojagaraul Wildlife Sanctuaries by drilling 3-4 wells in territories adjacent to the protected areas and promoting more sustainable and rotational use of rangelands with local shepherds (Turkmenistan).	GOs, local communities	At least 3 wells drilled, and rotational use of rangelands implemented by the end of 2027.	High	GBF Target 4
16.8	Develop recommendations for alternative livelihood sources based on the socio-economic assessment in the local communities adjacent to the protected areas.	NGOs, local communities	Report with the recommendations by the end of 2027.	High	GBF Target 22
16.9	Create evidenced-based passages through the border fence inside Koytendag SNR to facilitate movements and resulting genetic diversity of wild animals, including genetic exchange between the Urial and other ungulate populations, and to preserve an overall integrity and connectivity within the reserve.	GOs, scientific institutions	Passages created by the end of 2026	High	GBF Target 4, SPMS Goal 2
16.10	Establish the ecological corridor "Airibaba" (Koytendag SNR-Surkhan SSNR/Uzbekistan) with the main objective of conserving the movements and genetic diversity of the Urial, Lynx and other species populations.	GOs, scientific institutions	Legislation adopted recognizing the corridor by the end of 2027.	High	GBF Target 4
17. Western Tian Shan (Kazakhstan, Kyrgyzstan, Uzbekistan) – 6					
Species: Argali, Lynx, Snow Leopard					
<u>Action Plan for the Conservation of the Argali (2024-2032)</u>					
17.1	Exchange information on target species, plan and conduct coordinated surveys (Activity 10.2) using standardized methodologies (Activity 10.3).	GOs, NGOs, scientific institutions, hunting grounds	Workshop conducted, methodology guidelines agreed; survey reports, including coordinated transboundary surveys.	High	GSLEP, GBF Target 4
17.2	Evaluate the protected area management effectiveness (PAME) in the Western Tian Shan World Natural Heritage Site.	GOs, NGOs, scientific institutions	PAME report, e.g., IUCN Green List Assessment Report	High	
17.3	Integrate recommendations from the transboundary management framework on the Western Tian Shan World	GOs, IUCN, GIZ, scientific institutions	Updated and coordinated management plans	Medium	GBF Target 1; SPMS Goal 5, UNESCO

Activities to be implemented by 2032		Responsible	Indicator	Priority ²	Related programmes
	Natural Heritage Site into individual protected area management plans.				
17.4	Expand Karatau SSNR by annexing the adjacent north-facing slopes of the Karatau Range.	GOs	New zoning/maps, expanded Karatau SPA	Medium	GBF Target 3, GSLEP
17.5	Apply Activities 5.1 and 5.2 in this CU ensuring that requirements for the conservation of all target species and other biodiversity are adequately addressed during planning, construction and operation of linear infrastructure.	GOs, NGOs, CMS Secretariat, scientific institutions	GOs, NGOs and scientific institutions contribute to EIA processes.	High	GBF Target 14, Agreement between the Government of the Republic of Kazakhstan, the Government of the Kyrgyz Republic, and the Government of the Republic of Uzbekistan on Cooperation in the Field of Environmental Protection and Rational Use of Natural Resources dated 17 March 1998 (hereinafter – the Agreement).
18. Northern and Inner Tian Shan (China, Kazakhstan, Kyrgyzstan) - 7					
Species: Argali, Lynx, Pallas's Cat, Snow Leopard					
<u>Action Plan for the Conservation of the Argali (2024-2032)</u>					
18.1	Conduct transboundary assessment and monitoring of CAMI species and habitats (Activity 10.1 and 10.2).	GOs, NGOs, scientific institutions	Assessment and monitoring carried out by 2028, report prepared.	High	GBF Target 4; SPMS Goal 5, GSLEP

Activities to be implemented by 2032		Responsible	Indicator	Priority ²	Related programmes
18.2	Conduct a feasibility study for the creation of a network of protected areas to conserve target species and their habitats in the transboundary landscape between Kazakhstan, China and Kyrgyzstan (Mountains of Kungey Alatau, Terskey Alatau and Uzynkara).	GOs, NGOs, scientific institutions	Feasibility study published and agreed between the three countries.	Medium	GBF Target 3; SPMS Goal 5, GSLEP
18.3	Hold a workshop to map existing and planned border fences, and other linear infrastructure, assess their impacts, and develop mitigation measures.	GOs, NGOs, scientific institutions, GSLEP, CMS Secretariat	Workshop held by 2027, report prepared including site-specific mitigation measures developed and agreed.	High	GBF Targets 1 and 2, GSLEP
18.4	Implement the measures to enhance connectivity as determined under 18.3.	GOs, IFIs	Measures implemented.	High	GBF Targets 1, 2, SPMS Goal 2, GSLEP
18.5	Conduct training of border guards (see Activities 4.4, 7.7 and 10.4)	GOs, NGOs, scientific institutions	One training held by 2027 in each country and one regional one.	High	GBF Target 20, GSLEP
18.6	Support the development of community-based nature-based solutions namely: a) provide initial investment and assistance to wildlife tourism product development and marketing; b) ensure the link between benefits to communities and conservation efforts; c) assign Argali habitats for management to community-based organizations, including the sustainable use of Argali when its abundance has reached the established thresholds; and d) support other sustainable and wildlife-friendly alternatives to livestock rearing.	GOs, NGOs	One community-based nature-based solution developed by 2028	High	GBF Target 22, GSLEP
18.7	Improve policy and regulation to avoid negative impacts of tourism on target species, their habitats and on eco-tourism potential of the area; ensuring that tourism benefits local communities and incentivizes biodiversity conservation.	GOs, NGOs	Policy and regulations to avoid negative impact on target species and	High	GBF Target 1, GSLEP

Activities to be implemented by 2032		Responsible	Indicator	Priority ²	Related programmes
			habitats in place and enforced		
18.8	Apply grazing management including necessary seasonal and temporary restrictions on grazing in OECMs (including Eco corridors) and / or in Protected Areas (where applicable) to improve habitat conditions for target species using relevant tools (wildlife-inclusive pasture management guidelines used in Kyrgyzstan).	GOs	Grazing management improved in at least one PA and/or OECMs per country	High	GBF Targets 3, 4, GSLEP
18.9	Outside protected areas, engage with and provide training to local communities to ensure sustainability of grazing practices.	NGOs, GOs, UNEP	At least 1 training provided to local communities in each country.	Medium	GBF Target 20, GSLEP
19. High Pamirs/Wakhan (Afghanistan, China, Kyrgyzstan, Pakistan, Tajikistan) - 8					
Species: Argali, Lynx, Pallas's Cat, Snow Leopard, Urial					
<u>Action Plan for the Conservation of the Argali (2024-2032)</u>					
19.1	Coordinate monitoring and research of population status and threats to target species, exchanging data / information on target species, particularly camera traps and non-invasive DNA, including Snow Leopard data in coordination with GSLEP, the PAWS Scientific Advisory Panel and IUCN Cat SG.	GOs, NGOs, GSLEP, scientific institutions, IUCN SSC SGs	Survey reports, scientific publications. Coordinated monitoring carried out by 2028.	High	GBF Targets 4, 20, 21, GSLEP
19.2	Map existing and planned linear infrastructure, including existing and planned border fences and roads, as well as remnants of old fences (e.g. between China-Kyrgyzstan, China-Tajikistan, China-Pakistan and China-Afghanistan, Tajikistan -China), assess their impacts and identify mitigation and compensation measures by involving all relevant national and international stakeholders, CAMI SFPs and national experts with the facilitation from the CMS Secretariat and GSLEP, taking into account relevant guidelines.	CMS Secretariat, GOs, NGOs, scientific institutions, GSLEP	Meeting taken place (in person or online held), outcomes of the meeting published by 2028, identified mitigation measures ready for implementation.	High	GBF Targets 1, 14, GSLEP

Activities to be implemented by 2032		Responsible	Indicator	Priority ²	Related programmes
19.3	Implement measures agreed at the meeting above (19.2) to increase connectivity, transboundary migrations and range expansion for CAMI species.	GOs	Report on implemented mitigation measures by 2032.	High	GBF Targets 1, 14, SPMS Goals 2, 5, GSLEP
19.4	Support the implementation of community-based wildlife management approaches, where possible, including extractive and non-extractive use (particularly in Kyrgyzstan, potentially in Afghanistan, Tajikistan).	NGOs, GOs	Number of CBWM initiatives active in the CU.	Medium	GBF Target 22, GSLEP
19.6	Explore the feasibility of the reintroduction of Urial in the Tajik part of the Wakhan, using animals from Afghanistan.	NGOs, GOs, IUCN SSC SGs	Feasibility study by 2032	Low	GBF Target 4
20. Altai (China, Mongolia, Kazakhstan, Russian Federation) - 9 Species: Argali, Snow Leopard, Pallas's Cat, Lynx					
<u>Action Plan for the Conservation of the Argali (2024-2032)</u>					
20.1	Compile CAMI species data within this CU to update the range and population estimates and identify further monitoring needs.	GOs, NGOs, GSLEP, scientific institutions	Data accumulating started by 2026. Results reported annually.	Medium	GBF Target 20, GSLEP
20.2	Conduct transboundary and coordinated monitoring of Argali, Snow Leopard, Pallas Cat populations.	GOs, NGOs, scientific institutions, PAs, GSLEP, IUCN SSC	Coordinated monitoring carried out by 2026	High	GBF Target 4; SPMS Goal 5, GSLEP
20.3	Map linear infrastructure, including border fences, between the Range States, assess their impact on target species, especially Argali and mitigate their effects.	GOs, NGOs, PAs, scientific institutions	Report on assessment by 2028. Negative effects reduced by 2032 (special report)	High	GBF Targets 1, 14
21. Daurian Steppe (China, Mongolia, Russian Federation) - 10 Species: Mongolian Gazelle, Pallas's Cat, Przewalski's Horse (re-introduction ongoing), Goitered Gazelle (reported in Russia)					
<u>Action Plan for the Conservation of the Argali (2024-2032)</u>					
21.1	Compile existing data on target species numbers and distribution and conduct field surveys.	GOs, NGOs, scientific institutions	Monitoring conducted, report and recommendations prepared by the end of 2026	High	GBF Target 4, 17, SPMS Goal 5

Activities to be implemented by 2032		Responsible	Indicator	Priority ²	Related programmes
21.2	Conduct joint surveys to understand and agree on how to maintain and improve transboundary migration of Mongolian Gazelles between China, Mongolia and Russia.	GOs, NGOs, scientific institutions	Surveys conducted and the assessment report prepared by the end of 2028, passages are re-designed at least in one identified hotspot	High	GBF Target 4; SPMS Goal 5
21.3	Maintain and improve connectivity along the existing railways through the modification and re-design of barbed wire fences: a) replace the barbed wire fences along the trans-Mongolian railway by smooth wire and adjust fence height to allow Mongolian Gazelles and Goitered Gazelles to cross; b) remove fences where no human settlements are located in accordance with the Mongolian fence standards from 2024.	GOs, NGOs, scientific institutions	Fences re-designed along identified hotspots derived from the GPS tracking data by 2028	High	GBF Targets 1, 2 14, SPMS Goal 2
21.4	CMS Secretariat to address planned railway including fencing of the railway with Mongolian Government in a letter, sharing the GIUM and CAMI Atlases and as a follow up organize an online meeting between relevant sector representatives in Mongolia and, potentially, involving the Prague Zoo.	CMS Secretariat, GOs, NGOs, scientific institutions	Letter sent, online meeting protocol available by 2026	High	GBF Targets 1, 2
21.5	Conduct a workshop to train rangers in control and prevention of wildlife crime.	GOs, NGOs	Workshop conducted by the end of 2027	Low	GBF Target 20
21.6	Map the distribution of mining activities and conduct workshops with relevant stakeholders to explore their impact and further mitigation measures.	GOs, NGOs, scientific institutions	Impact assessment report prepared by 2028	High	GBF Targets 1, 2
21.7	Organize a workshop with stakeholders at the national and local levels to explore the magnitude, distribution and understand the decision-making process of the haymaking.	GOs, NGOs, scientific institutions, local communities	A workshop organized by the end of 2027	High	GBF Targets 1, 2

Activities to be implemented by 2032		Responsible	Indicator	Priority ²	Related programmes
22. Gobi (China, Mongolia) – 11					
Species: Argali, Asiatic Wild Ass, Gobi Bear, Goitered Gazelle, Lynx, Pallas's Cat, Snow Leopard, Wild Camel					
<u>Action Plan for the Conservation of the Argali (2024-2032)</u>					
<u>Range-wide Action Plan for the Asiatic Wild Ass (2024 - 2033)</u>					
22.1	Establish and continue collaboration between China and Mongolia through increasing awareness on transboundary issues and improving communication between agency personnel, biologists, and conservationists working on Wild Camel and other CAMI species conservation in China and Mongolia.	GOs, NGOs, scientific institutions	One online meeting by the end of 2026 followed by annual in-person/online meetings	High	GBF Targets 3,20; SPMS Goal 5
22.2	Initiate communication and wildlife-related data sharing between both countries.	GOs, NGOs, scientific institutions	Communication lines set up by 2026	High	GBF Target 21, SPMS Goal 3
22.3	Conduct joint monitoring of wildlife movements along the border between China and Mongolia, with continuous monitoring by camera trapping on both sides.	GOs, NGOs, scientific institutions	At least one survey conducted by the end of 2028, report with survey results prepared	High	GBF Targets 3, 4, 20, SPMS Goal 1, GSLEP
22.4	Map water points and monitor them with camera traps in the borderline areas of both countries.	GOs, NGOs, scientific institutions	Maps of water points, camera trapping reports	High	GBF Target 4, GSLEP
22.5	Identify, describe and map mining sites on both sides of the border between China and Mongolia, based on most recent satellite images.	NGOs, scientific institutions	Maps produced by the end of 2026	High	GBF Target 2, GSLEP
22.6	Identify, describe and map potential wildlife movement corridors across the state border fences based on joint monitoring and existing movement data by the Mongolian and Chinese teams, focusing on the Great Gobi A and Great Gobi B SPAs in Mongolia and Kalamaili NP in China.	GOs, NGOs, scientific institutions	Wildlife movement corridors identified, described and mapped by the end of 2028	High	GBF Target 1,2, 3, SPMS Goal 1, GSLEP
22.7	Explore possibilities for establishing a transboundary conservation area of Great Gobi A SPA in Mongolia and MaJu Shan LPA, and Anxi Extreme Arid Desert ANR in China.	GOs, NGOs, scientific institutions	Online meeting held by the end of 2026	High	GBF Target 3; SPMS Goal 5, SPMS Goal 1, GSLEP

Activities to be implemented by 2032		Responsible	Indicator	Priority ²	Related programmes
22.8	Reduce the livestock numbers within the Great Gobi B SPA, the Small Gobi A SPA, and the Small Gobi B SPA and limit livestock grazing to limited use zones in close cooperation with local communities, soum, and aimag administrations.	GOs, NGOs, local communities	Revised herder contracts with the Great Gobi B SPA by the end of 2028	High	GBF Target 1, 4, GSLEP
22.9	Evaluate and improve pasture management plans to regulate livestock grazing in the buffer zones of Great Gobi A & B SPA and Small Gobi A & B SPA in close cooperation with local communities, soum, and aimag administrations.	GOs, NGOs, local communities	Revised pasture management plans by the end of 2027	High	GBF Target 10
22.10	Establish water management plans to secure sufficient water flow into the Great Gobi B SPA in cooperation with watershed councils.	GOs, NGOs	Water management plans established by the end of 2028	High	GBF Target 4
22.11	Maintain functional connectivity between the Great Gobi SPAs and the Small Gobi SPAs based on socio-ecological surveys as well as by mapping and defining wildlife movement corridors.	GOs, NGOs, scientific institutions	Socio-ecological surveys and mapping conducted by the end 2028	High	GBF Target 3, SPMS Goal 1
22.12	Maintain a high degree of functional connectivity between Great Gobi A and Great Gobi B SPA as well as between Small Gobi A and Small Gobi B based on socio-ecological surveys as well as by mapping and defining wildlife movement corridors.	GOs, NGOs, scientific institutions	Socio-ecological surveys and mapping conducted by the end 2028	High	GBF Target 3; SPMS Goal 1
22.13	Revise the boundaries of the Small Gobi B SPA excluding mining-related infrastructure.	GOs	Officially approved decree about the boundaries of the Small Gobi B SPA by the end of 2026	High	
22.14	Maintain functional connectivity between Small Gobi A and Small Gobi B SPAs as well as Great and Small Gobi SPAs based on socio-ecological surveys as well as by mapping and defining wildlife movement corridors.	GOs, NGOs, scientific institutions	Socio-ecological surveys and mapping conducted by the end 2028	High	GBF Target 3; SPMS Goal 1
22.15	Implement wildlife-friendly crossing structures over the fenced Trans-Mongolian, Tavan Tolgoi, Zuun Bayan, and Khangai railroads as well as over high traffic mining roads.	GOs, private business	Number of wildlife-friendly crossing structures built by the end of 2030	High	GBF Targets 1, 3, 14 GBF Target 3, GSLEP

Activities to be implemented by 2032		Responsible	Indicator	Priority ²	Related programmes
22.16	Continue monitoring the long-term mining-related impacts, including traffic volumes, on CAMI species and feed back into the companies' management to mitigate impacts.	GOs, NGOs, scientific institutions, private business	Monitoring reports on the long-term mining-related impacts on CAMI species are available regularly	High	GBF Target 14, SPMS Goal 2
24.17	Establish an appropriate national legal framework to prevent hybridization of Przewalski's horses with domestic horses and wild camels with domestic camels and to allow removal of hybrids.	GOs	Revised national legal framework by the end of 2029	High	GBF Target 4
24.18	Reduce the number of domestic horses grazing in the limited use zone in Great Gobi B SPA and limit their presence to the non-breeding period from fall to early spring.	GOs, NGOs, local communities	Revised pasture management plans by the end of 2027	High	GBF Target 4
25. Western Trans-Himalaya (China, India, Nepal) - 12					
Species: Argali, Lynx, Kiang, Snow Leopard, Pallas's Cat, Wild Yak					
<u>Action Plan for the Conservation of the Argali (2024-2032)</u>					
25.1	Assess distribution areas for as many of the target species as possible (at least Argali, Kiang, Snow Leopard, Wild Yak), habitat use, and population sizes and trends of target species. For other target species, define distribution areas.	GOs, NGOs, scientific institutions	Range maps, first surveys, reports, scientific publications prepared	High	GBF Target 4, GSLEP
25.2	Conduct a meeting involving technical experts and government representatives in collaboration with GSLEP and relevant NGOs, such as ICIMOD to determine target species conservation needs in this area, to enhance transboundary cooperation and exchange experiences.	GOs, NGOs, scientific institutions	One meeting conducted, coordinated activities determined, report on implementation within CAMI.	High	GBF Targets 4, 20; SPMS Goal 5, GSLEP
25.3	Monitor climate change effects, especially on glacier and snow cover, effects on water and pasture availability, human land use, define and implement adaptation measures.	GOs, NGOs and scientific institution	New water points set up, livestock exclusion zones defined and enforced	Medium	GBF Target 8, GSLEP

ANNEX I

The CUs presented in the WP are priority areas selected from the transboundary conservation areas defined in the study titled *Transboundary conservation hotspots for the Central Asian Mammals Initiative*. Several areas were re-named and/or their boundaries were expanded as a result of ongoing conservation priorities and new data:

1. Renaming for geographic precision and clarity:

- Aral Sea / Western Kyzylkum Desert was renamed to Aralkum/North-Western Kyzylkum Desert;
- Eastern Ustyurt was renamed to Northern and Eastern Ustyurt;
- Southwestern Ustyurt was renamed to Western and Southern Ustyurt;
- The Khan Tengri region was renamed to Northern and Inner Tian Shan, reflecting the inclusion of two hotspots identified in the Study and
- Trans-Altai Gobi, South Gobi (new CU as described below) and Jungarian Gobi were merged into one CU named Gobi.

2. Expansion of areas of conservation significance for CAMI:

Several existing areas have been expanded based on updated data on species distribution, habitat connectivity, other identified important areas for biodiversity conservation and emerging threats:

- Western and Southern Ustyurt to include the Kyzylsai Regional Natural Park in Kazakhstan and the corridor used by Persian Leopards; and in Turkmenistan the proposed Balkan protected area cluster;
- Kopetdag, to include the foothills of the Kopetdag in Turkmenistan; and in Iran Golestan National Park - key Persian leopard and Urial habitat; and Turan National Park and Miandasht Wildlife Refuge - critical Asiatic Cheetah habitat; and
- High Pamirs, to include the Pamir-Alai region in Kyrgyzstan.
- Western Tian Shan boundaries were extended to reflect those of the UNESCO World heritage site more closely

3. Addition of new CUs:

Two transboundary conservation areas — Altai and South Gobi — were added to the list of priority CUs, because they were identified as priorities during the Technical Workshop for CAMI taking place on the isle of Vilm from 6-8 May 2025, based on habitats of additional species proposed for inclusion in CAMI:

- Altai, covering critical habitat across the Altai Mountain range and presence of CAMI species; and South Gobi, representing the unique desert-steppe and mountain ecosystems in southern Mongolia.

These adjustments aim to provide an operational conservation framework that aligns with current ecological knowledge, supports targeted conservation action, and facilitates cross-border collaboration in Central Asia.

ANNEX II

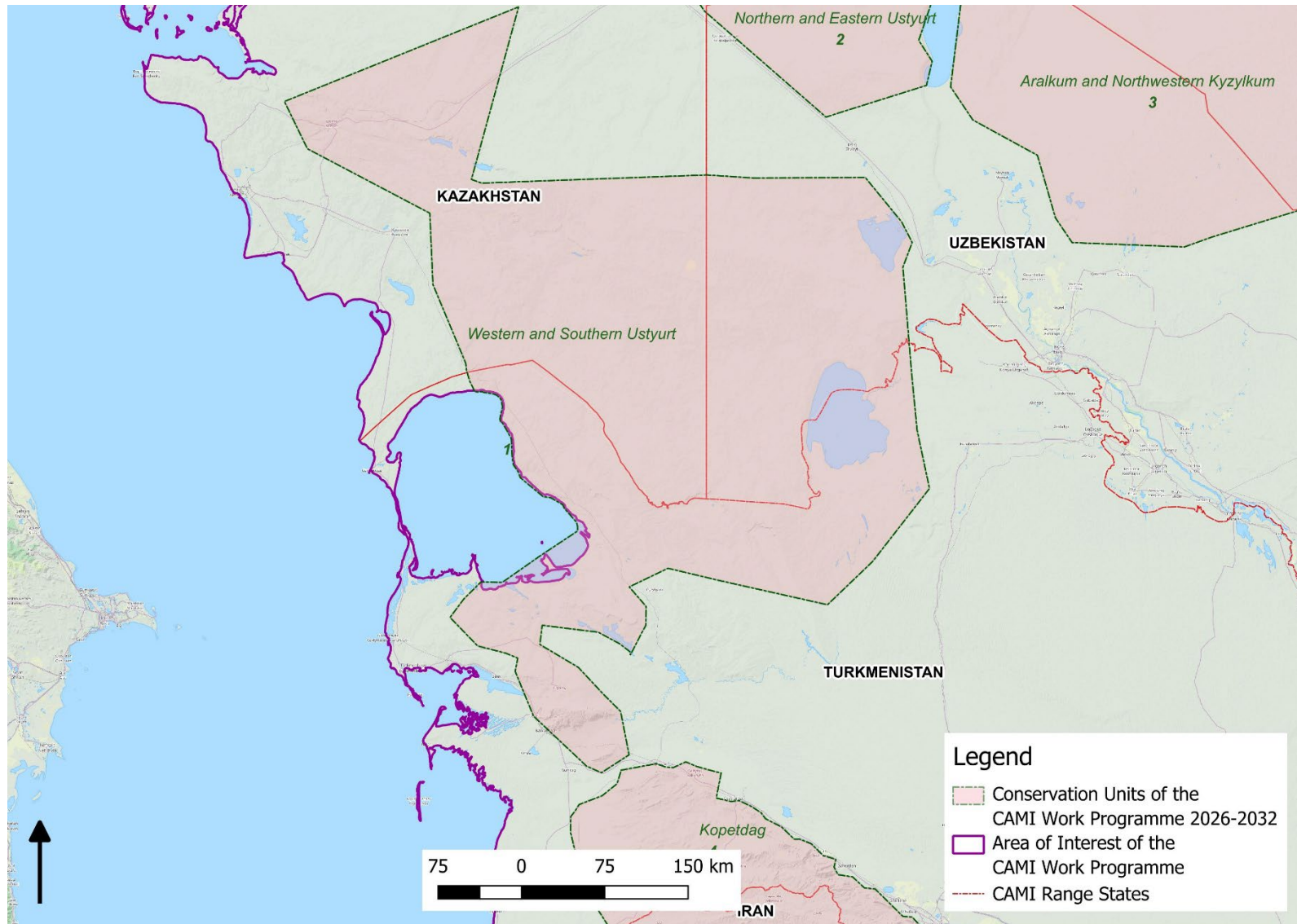


Figure 2. Conservation Unit 1: Western and Southern Ustyurt

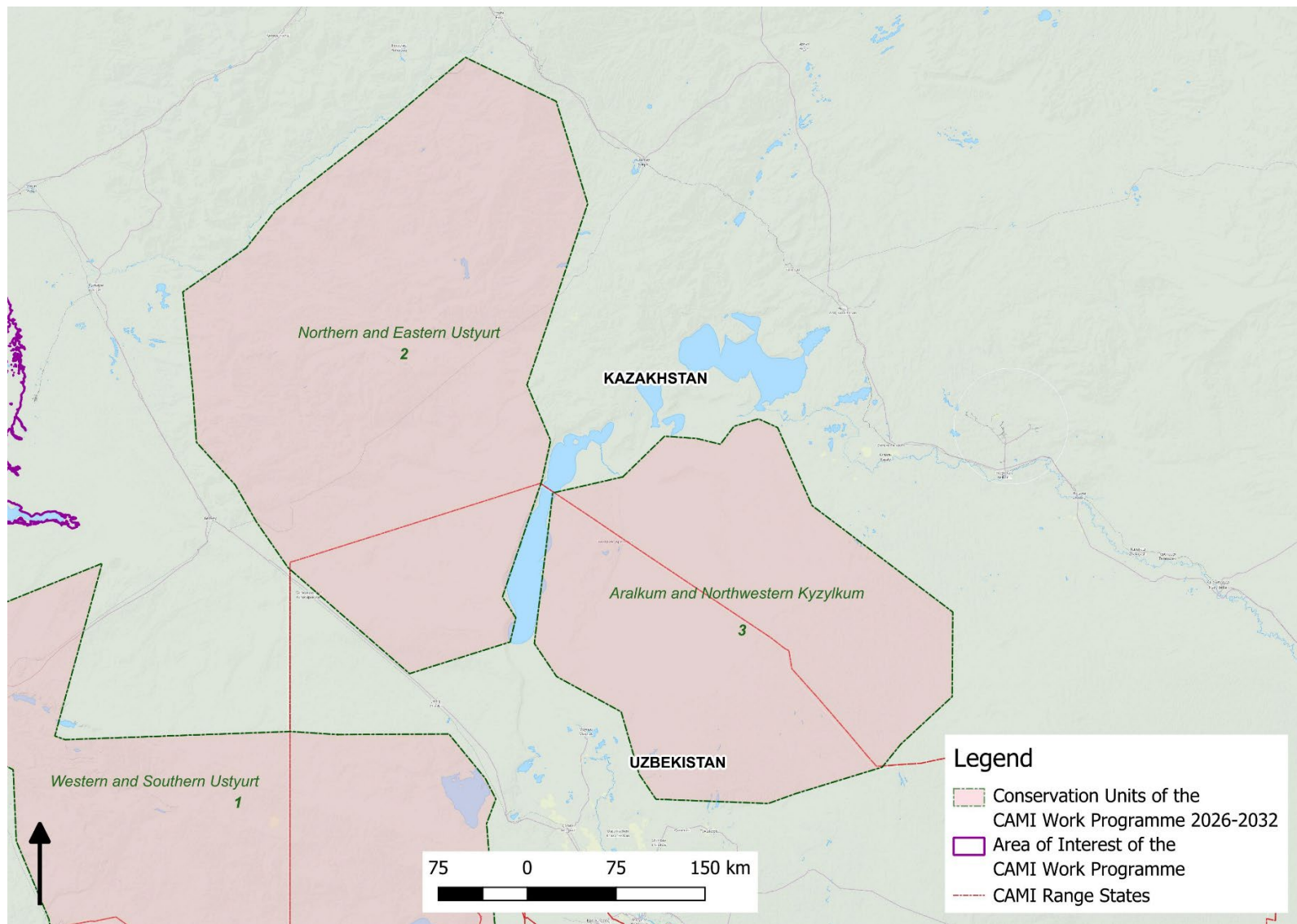


Figure 3. Conservation Unit 2: Northern and Eastern Ustyurt and Unit 3: Aralkum and Northwestern Kyzylkum

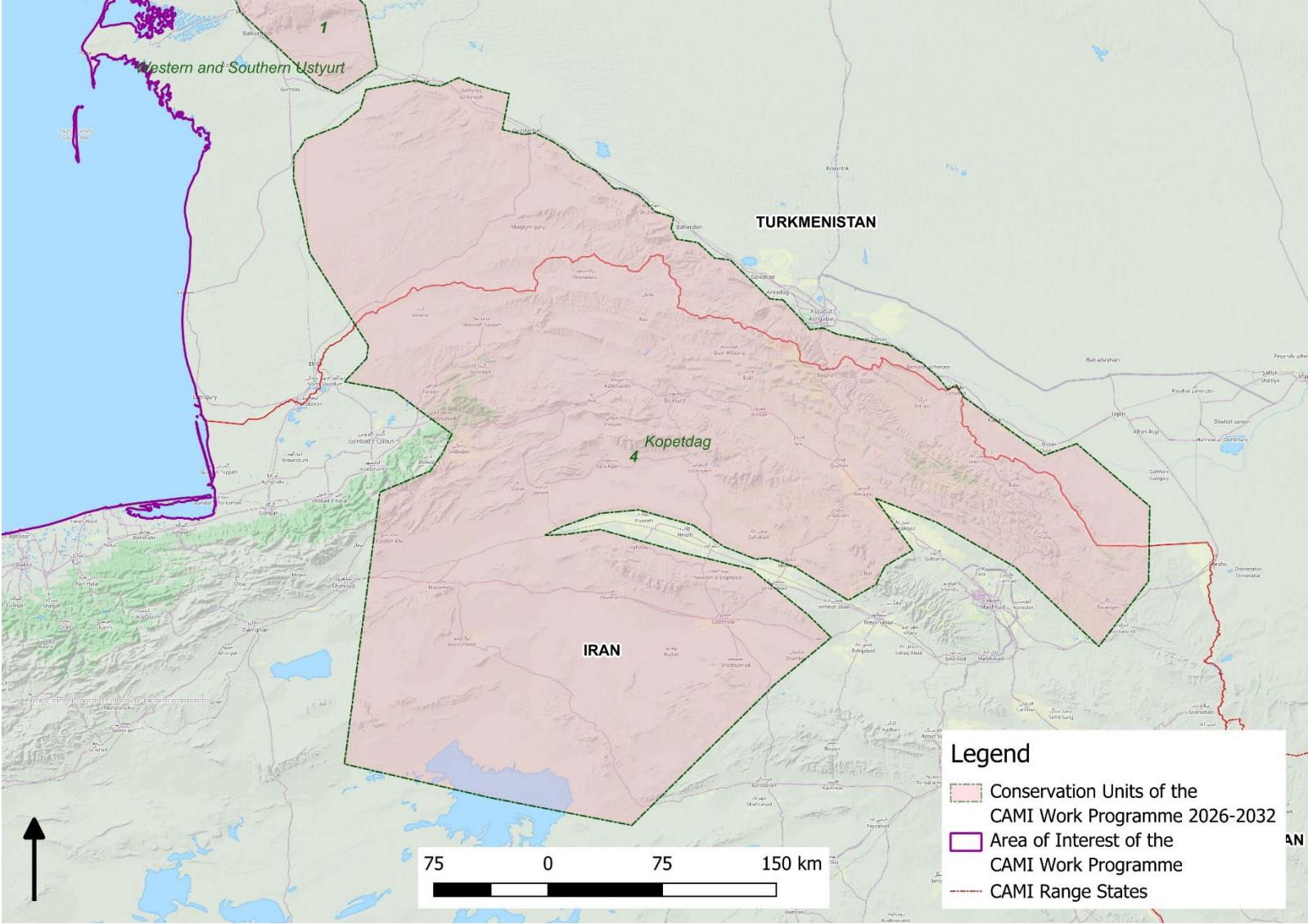


Figure 4. Conservation Unit 4: Kopetdag

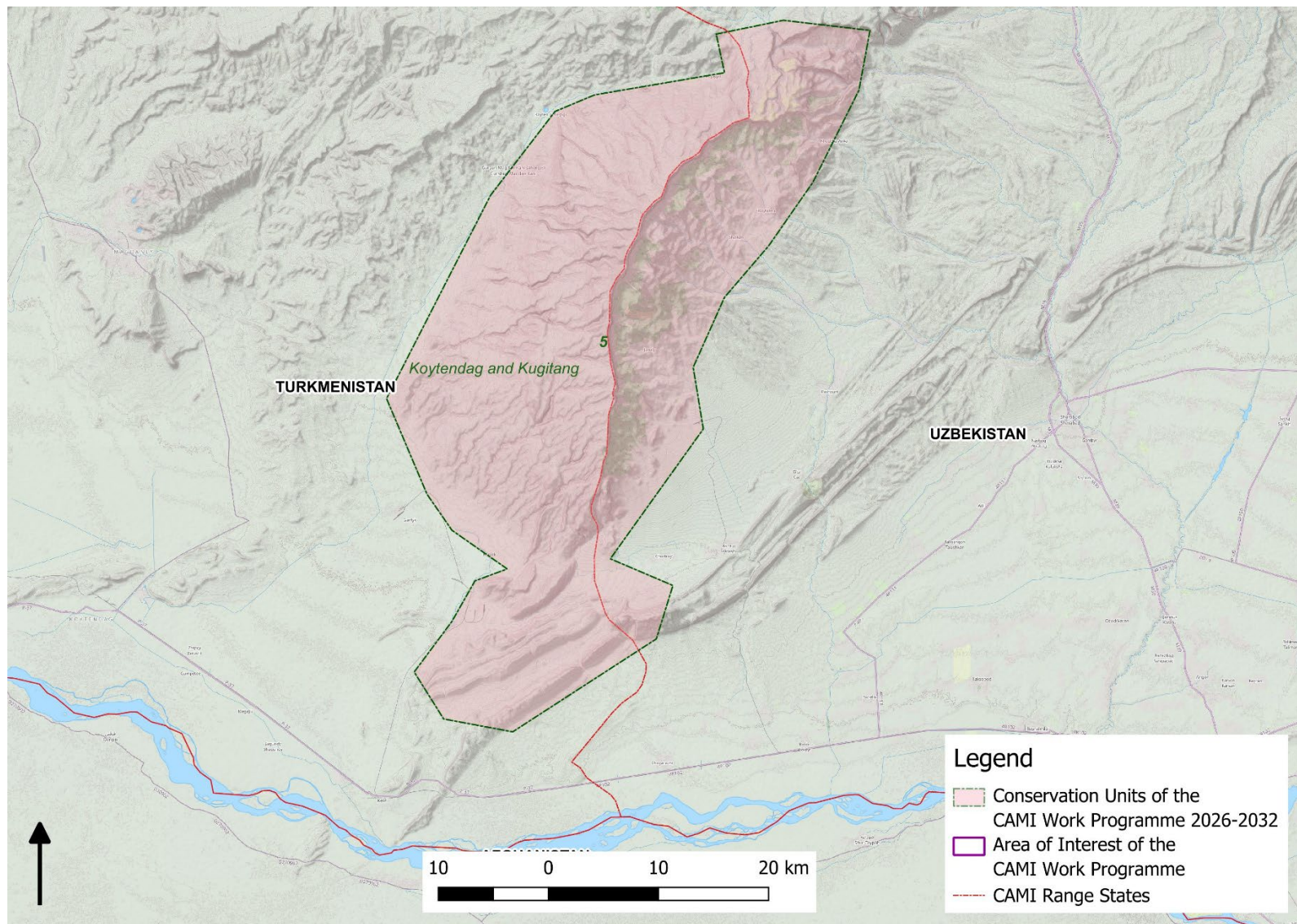


Figure 5. Conservation Unit 5: Koytendag and Kugitang

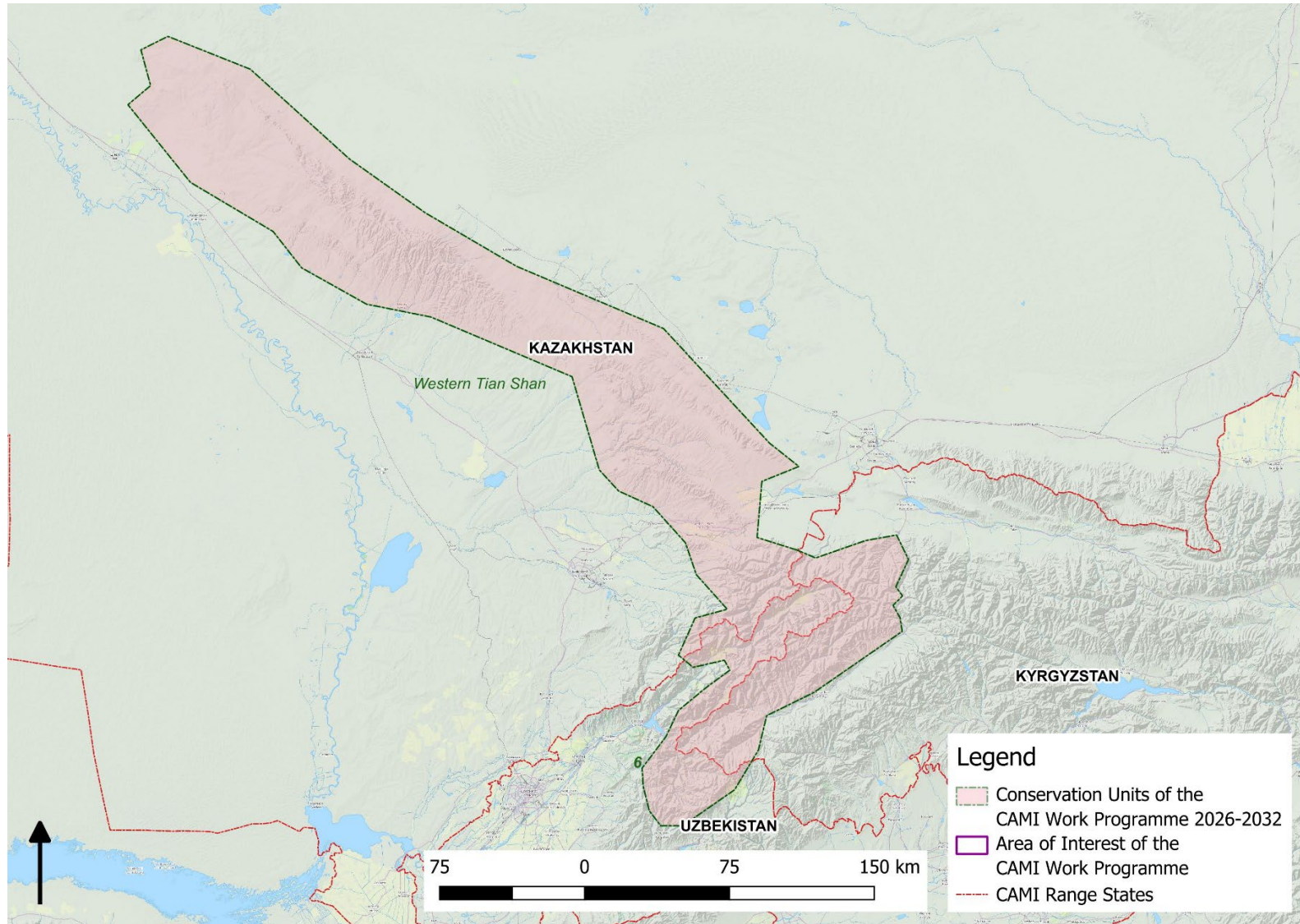


Figure 6. Conservation Unit 6: Western Tian Shan

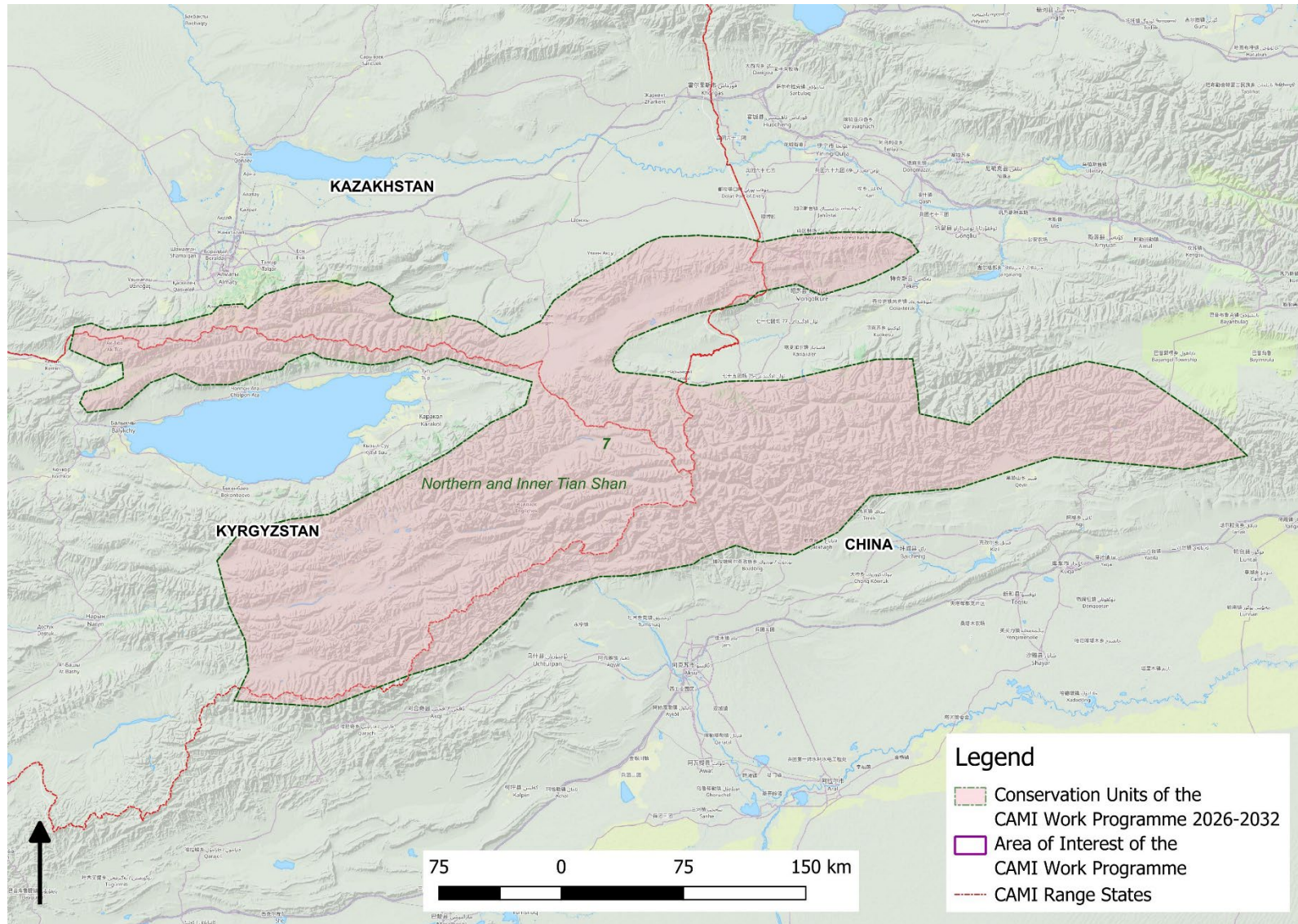


Figure 7. Conservation Unit 7: Northern and Inner Tian Shan

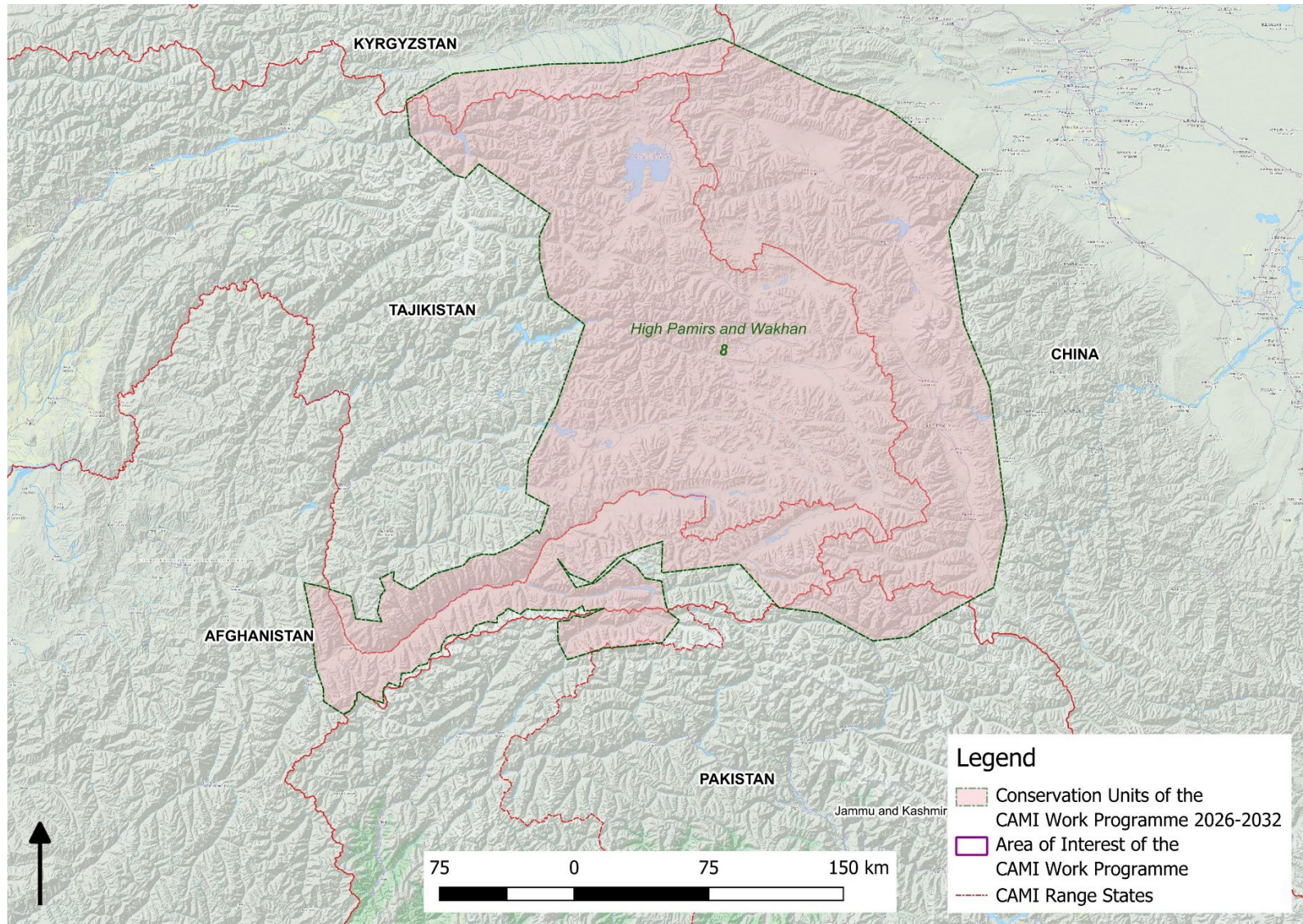


Figure 8. Conservation Unit 8: High Pamirs and Wakhan

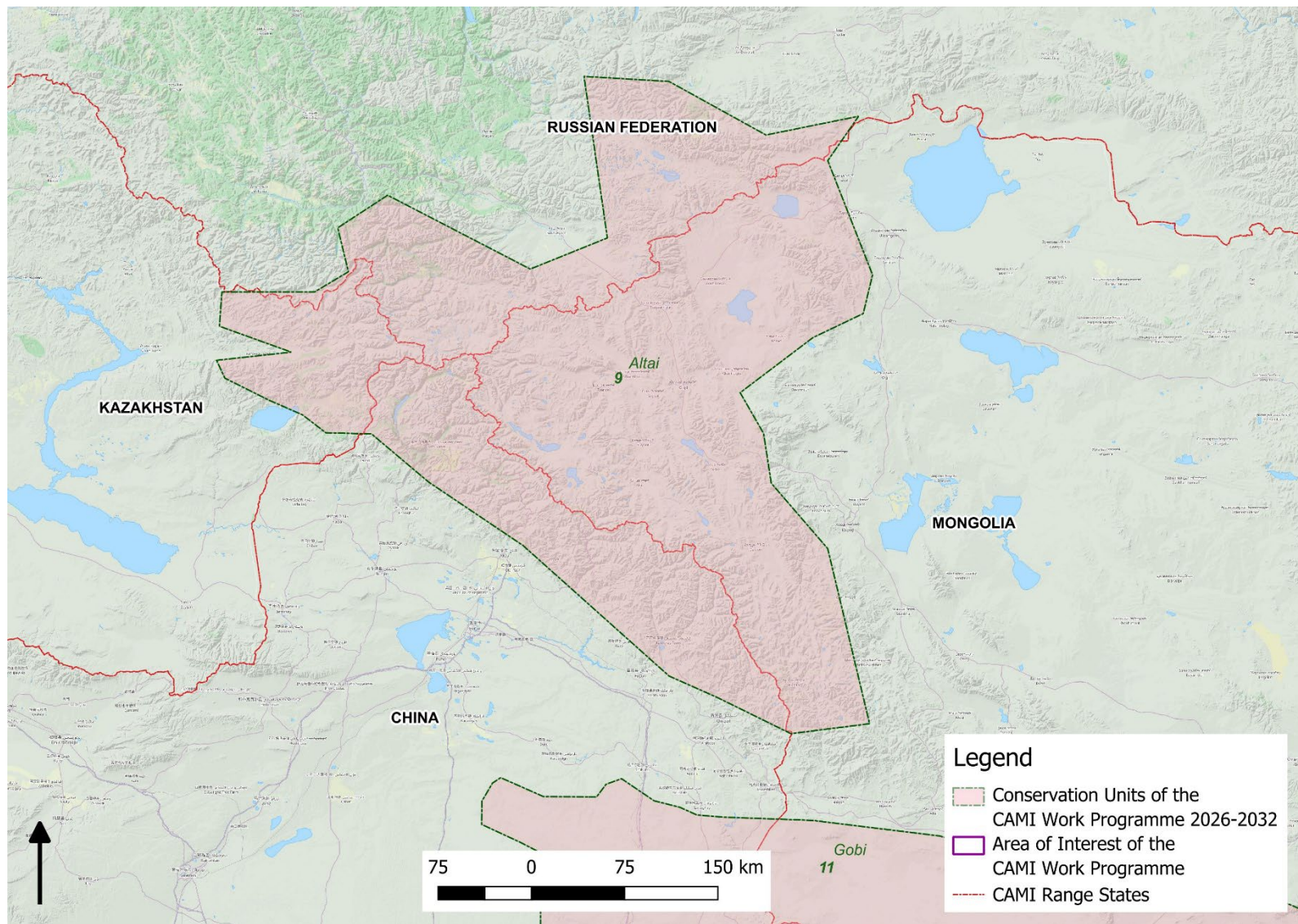


Figure 9. Conservation Unit 9: Altai

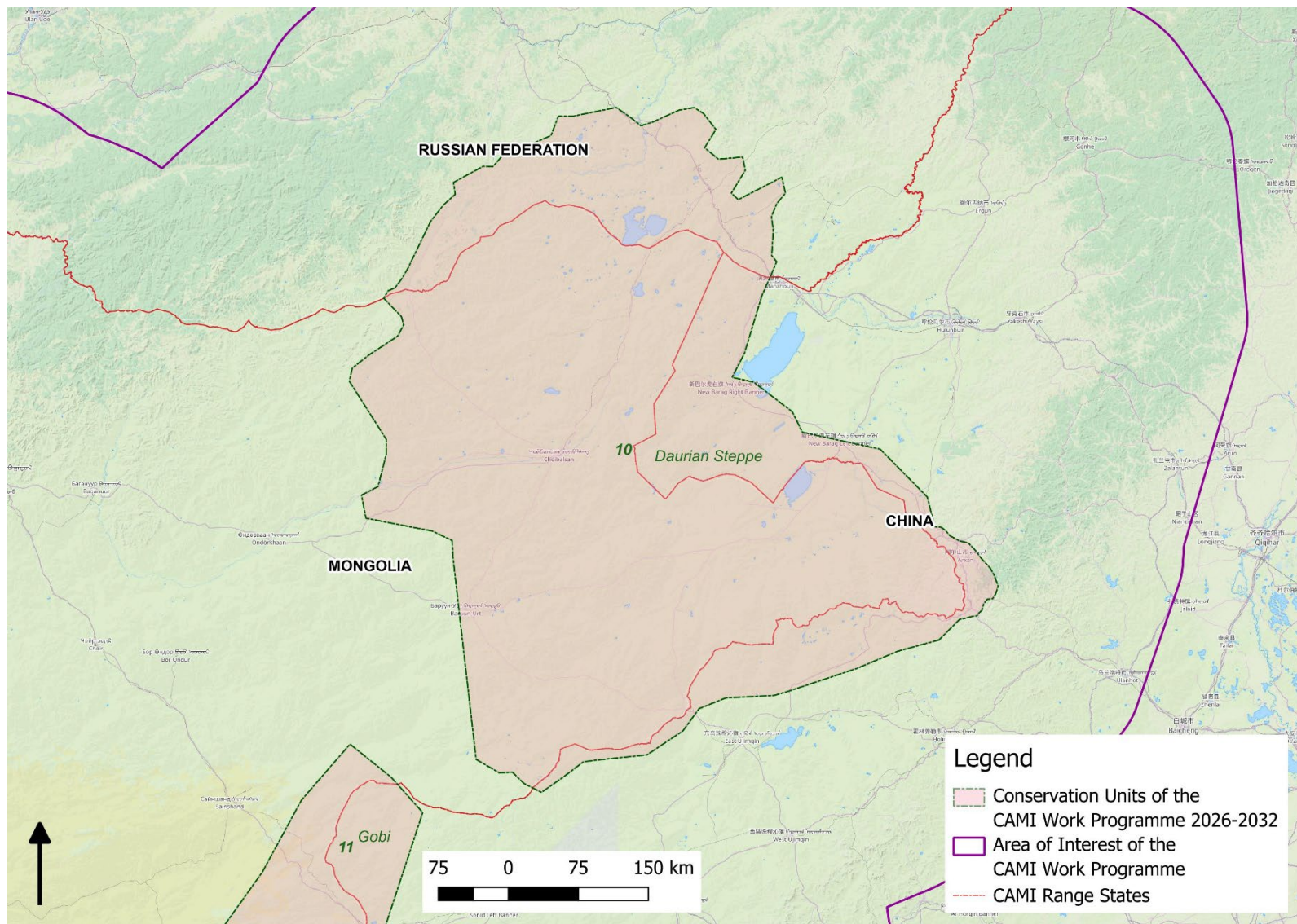


Figure 10. Conservation Unit 10: Daurian Steppe

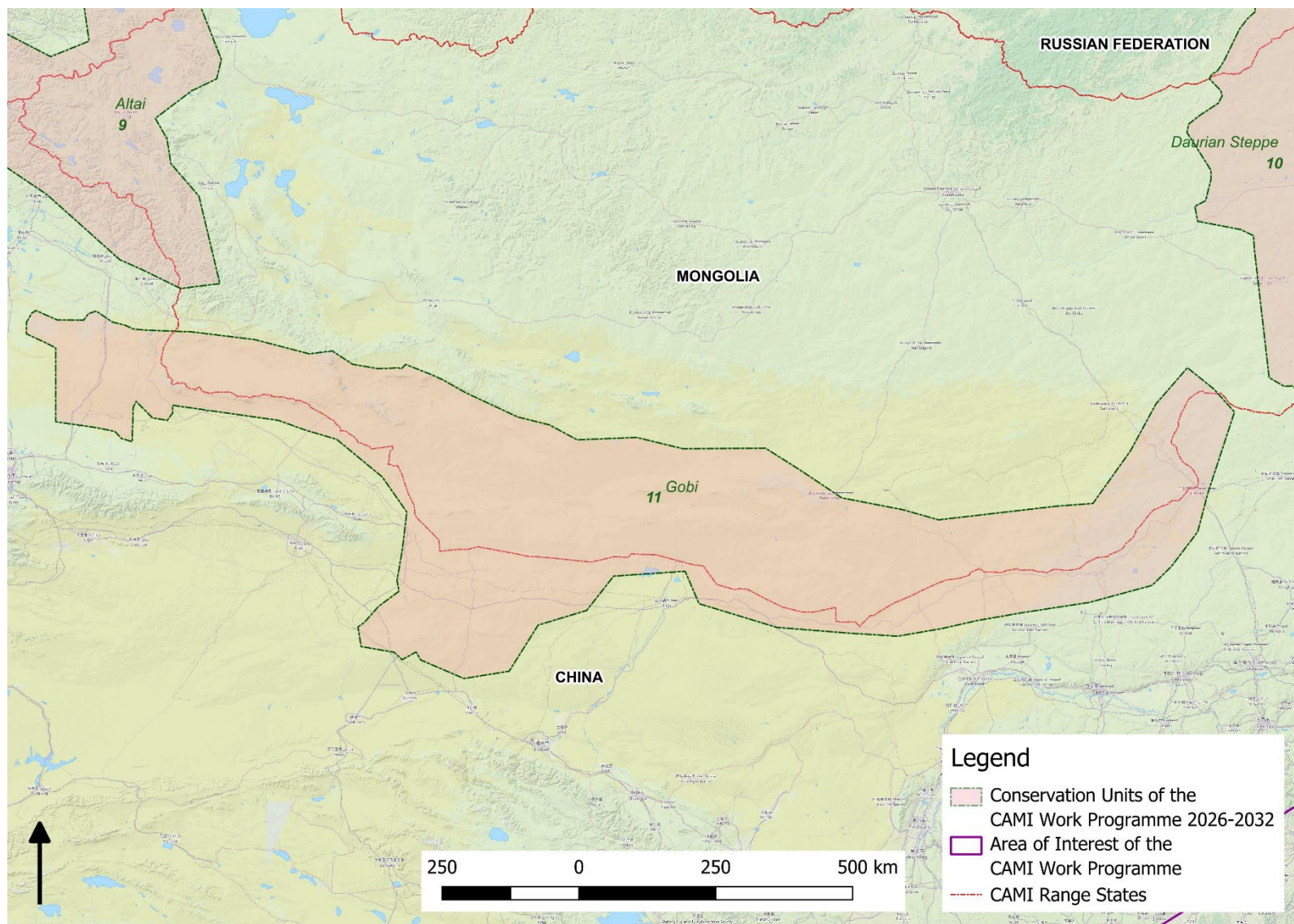


Figure 11. Conservation Unit 11: Gobi

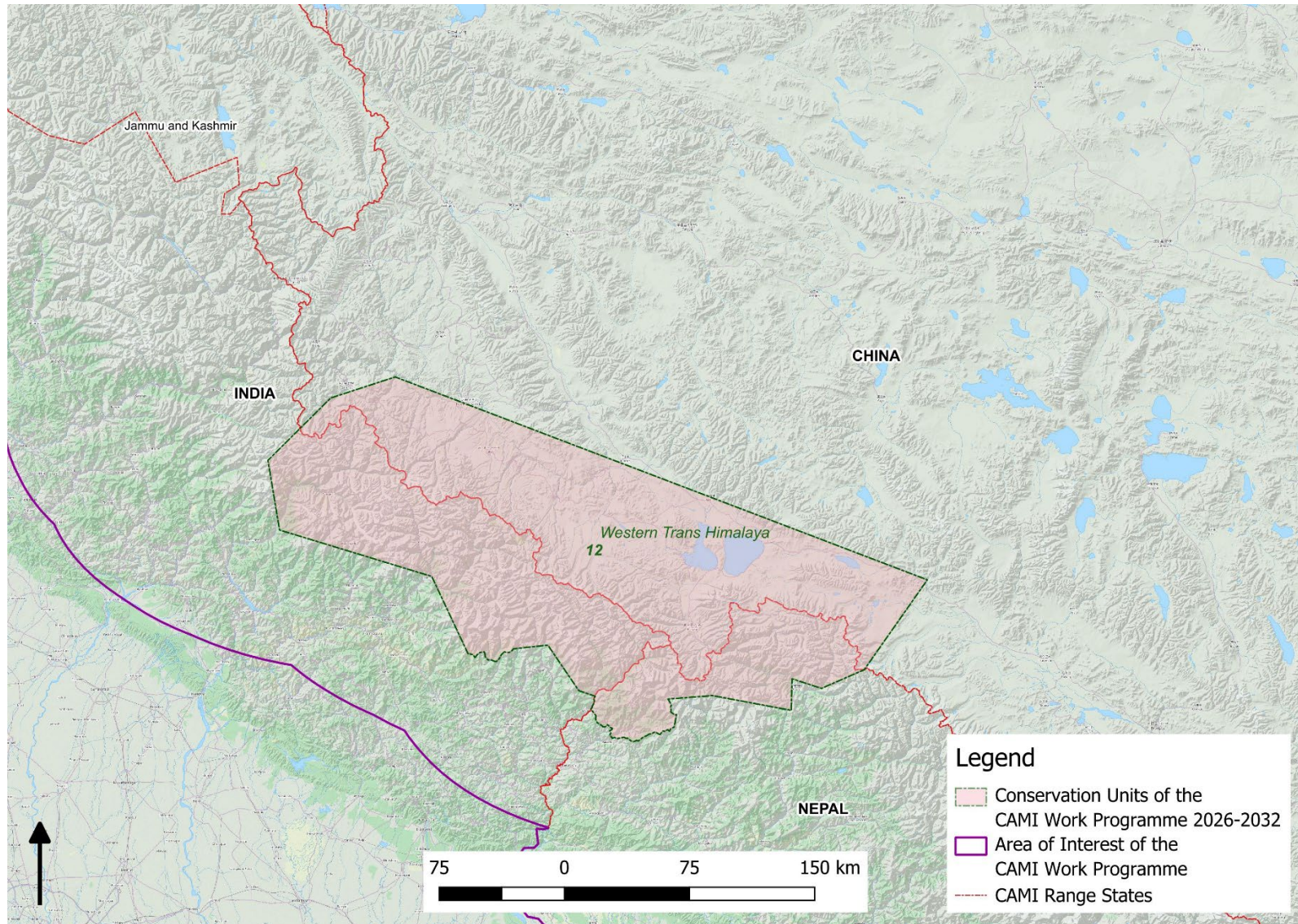


Figure 12. Conservation Unit 12: Western Trans-Himalaya