



Global Workshop on CMS Legislation

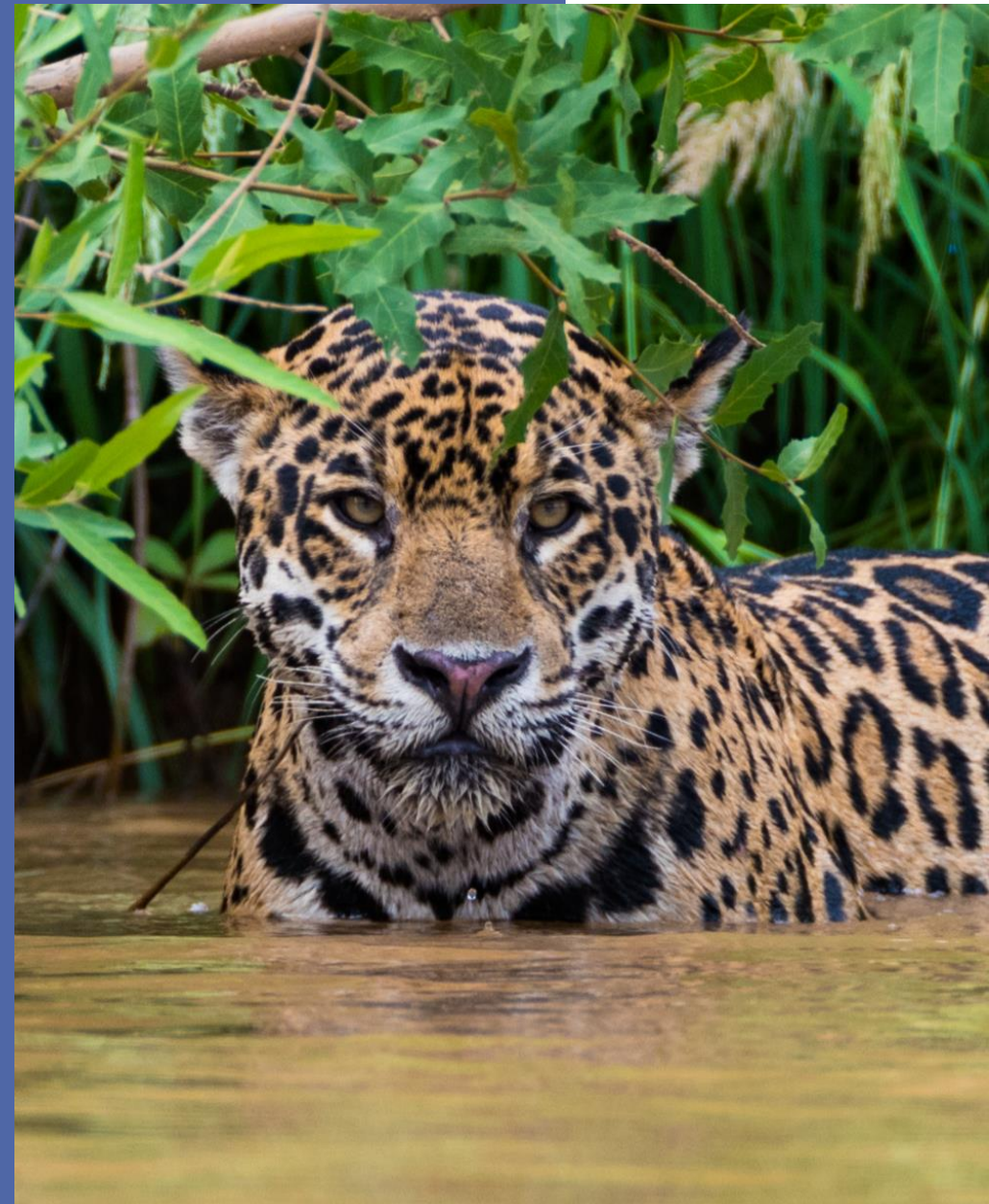
The Sustainable Wildlife Management
Legal Hub: *turning legal analysis into a
catalyst for integrated biodiversity
protection*

Dr Francesca Coli

International Legal Consultant (FAO)

SWM Programme – Legal Team

3-5 June 2025, Bonn, Germany



The European Union was recognized as Champion Plus for its generous support and commitment towards strengthening national legislation for migratory species for the period 2020 - 2025. This activity has been funded with the contribution granted by the European Commission under the Migratory Species Champion Programme and through the Global Public Goods and Challenges (GPGC Programme) Cooperation Agreements with UNEP.





SWM PROGRAMME BACKGROUND



Goal: To contribute to the conservation of wildlife, their habitats and associated services, while securing the food and livelihoods of the local people who depend on these resources, and reducing the risks of zoonotic spillover from wildlife.

Implemented by a consortium partnership (FAO, CIFOR-ICRAF, CIRAD, WCS)



 Improve institutional and legal frameworks	 Improve the management of fish and terrestrial wildlife	 Improve the supply of alternative protein	 Ensure that consumption of wild meat becomes sustainable	 Reduce the spillover risks of zoonotic pathogens
---	---	--	---	---

Working in diverse regions:



Community hunting zones in tropical forested areas

37 000 km² of forest



Community conservancies in savannah lands

17 000 km² of savannah

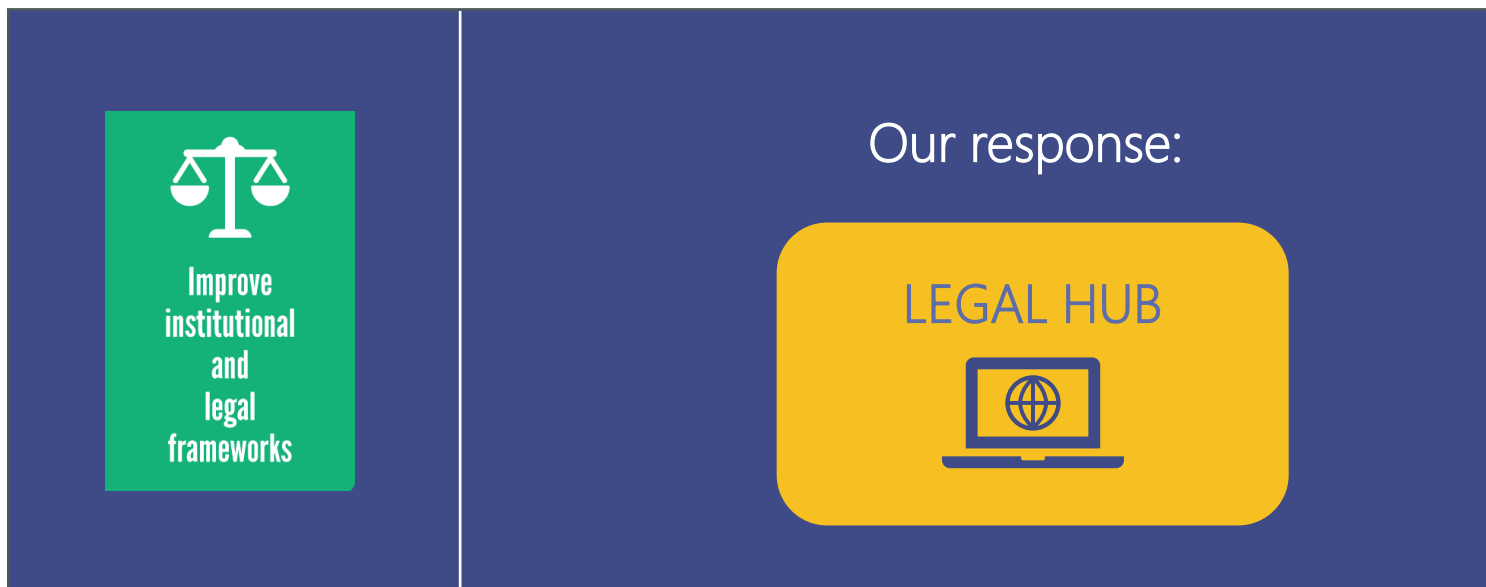


Sahelian wetlands management

32 Sahelian wetlands



- Strong legal frameworks are essential for wildlife conservation
- However, clear, accessible legal information remains out of reach for many
- For reform processes to be effective, they should be transparent, inclusive, and participatory





WHAT IS THE LEGAL HUB?



It is a user-friendly, innovative **online platform** providing access to:

- legal texts on wildlife management and agri-food systems;
- country legal profiles;
 - sector-specific legal analysis (including land tenure, hunting, fishing, ecosystems and habitats, animal production, aquaculture, food safety, etc..).
 - ❖ customary norms and practices;
 - ❖ requirements of relevant MEAs.



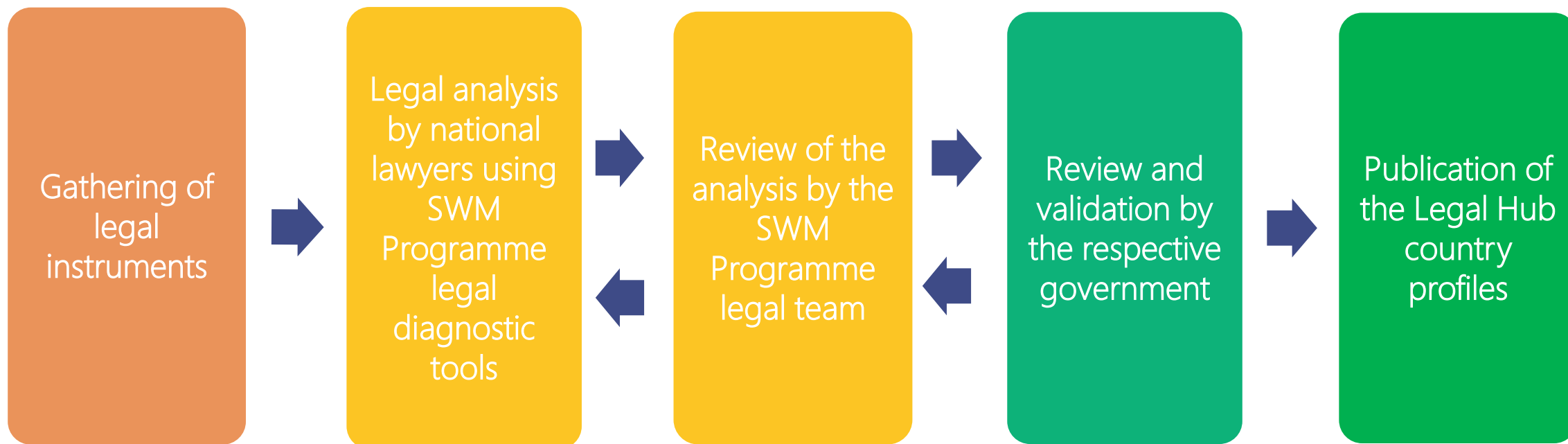
LEGAL HUB

How is the Legal Hub being used?

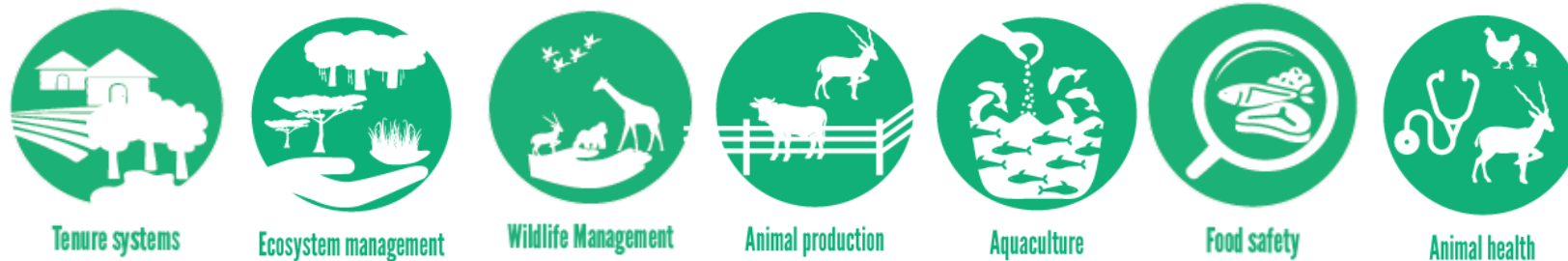
- Facilitating access to and understanding of national policy and legal frameworks.
- Promoting participatory policy and law-making processes.
- Enhancing the integration of customary norms and principles from MEAs.

<https://www.swm-programme.info/legal-hub>

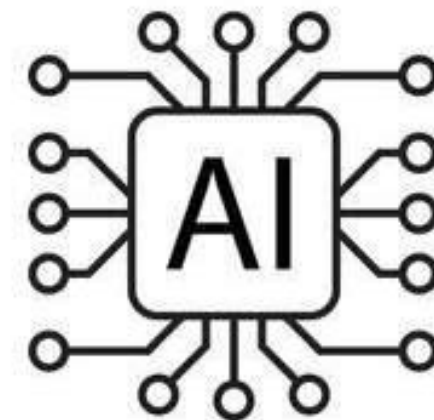
The legal hub country profiles are developed using a **comprehensive and participatory** approach:



Updated diagnostic tools:



Complementary tools:





CMS AND SWM



CMS COP14 Decision 14.29 g): “The Secretariat is requested to: (...) continue and enhance the collaboration with existing initiatives facilitating national legislative review such as (...) the Sustainable Wildlife Management Programme...”

How can the Legal Hub benefit the CMS NLP?

- 1 The updated diagnostic tools now incorporates **CMS principles** (as well as CITES, CBD, and RAMSAR) into key selected topics:



Hunting



Inland fisheries



Wildlife Management



Ecosystem management



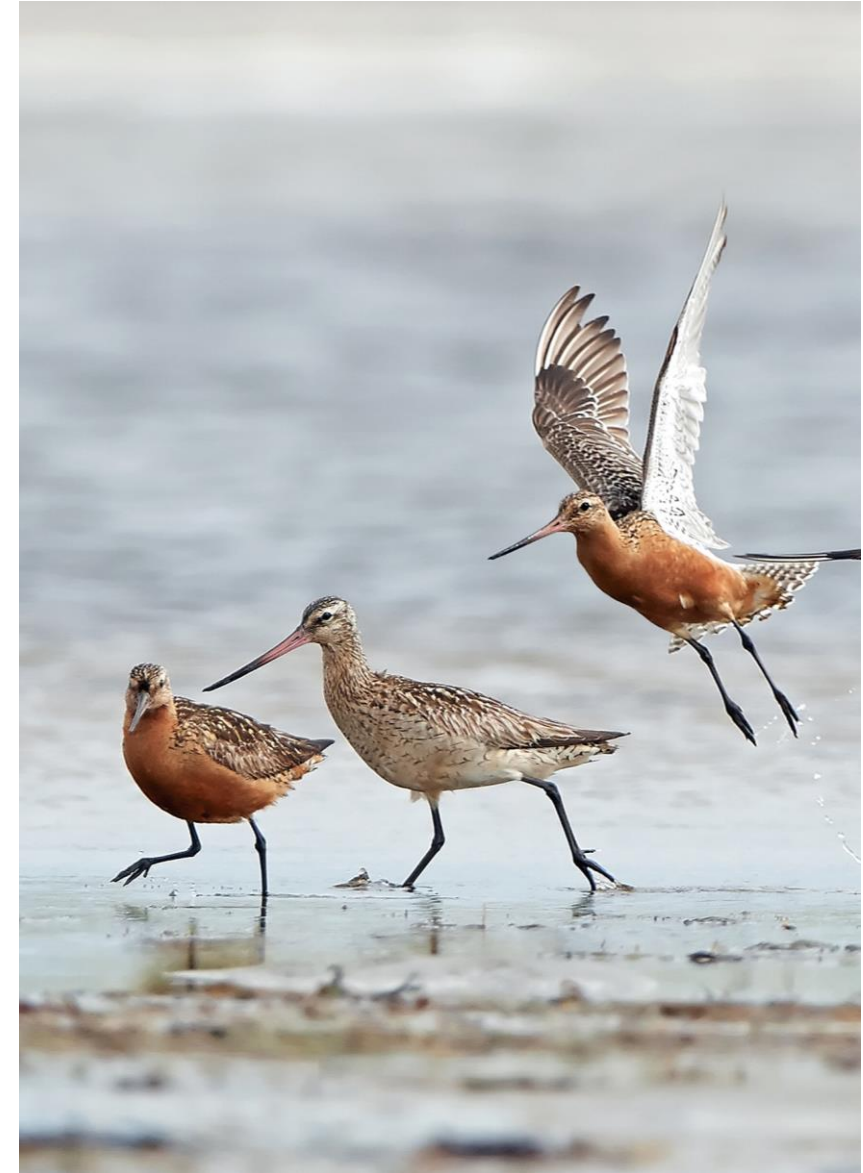
Animal production



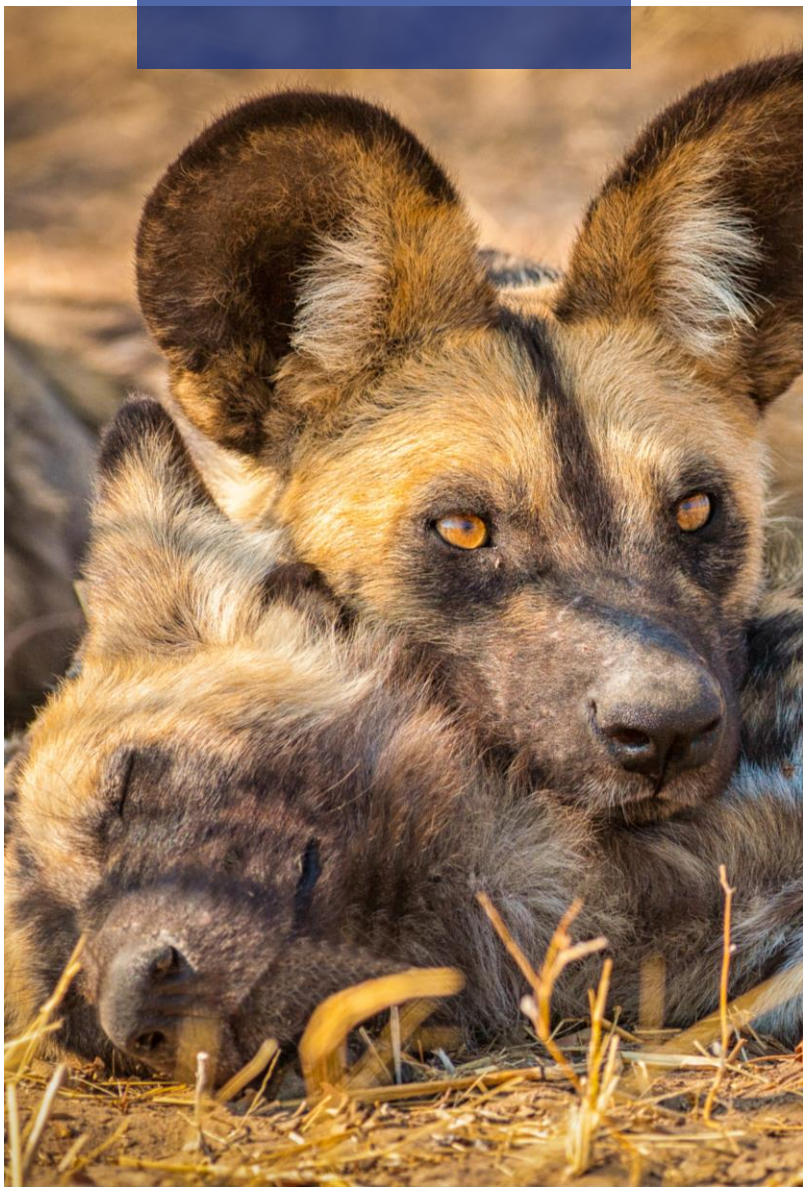
Waste Management



Pesticides



Examples of relevant diagnostic questions:



Wildlife Management



Ecosystem management



Ecosystem management



Wildlife Management



Inland fisheries



Hunting

- Does the legal framework **define migratory or transboundary species**?
- Does the legal framework contain provisions on **ecological connectivity**? If so, is the term defined?
- Does the policy and legal framework provide for **inventories of ecosystems** (forests, wetlands, etc.) and habitats (**including migration and breeding sites**) to be carried out at national and/or local level?
- Does the policy and legal framework provide for inventories of wild animals to be carried out at national and/or local level? Does it provide for inventories or surveys specific to certain species (e.g., invasive species, protected species, waterbirds)?
- Does the policy and legal framework provide for **cooperation with neighbouring countries** on the conservation and management of transboundary or migratory species?
- Does the legal framework provide for different types of hunting and other related activities (e.g., subsistence, traditional, commercial, sporting, trophy, scientific)?



2

Each country profile in the new Legal Hub will feature a dedicated 'MEAs section', including a tailored summary for CMS (as well as CITES, CBD, and RAMSAR) based on responses to targeted diagnostic questions.

This will help to:

Help to assess the domestication of CMS (and other MEAs) at a national level

Inspire national legal reforms based on international standards and norms

Offer a comprehensive overview of MEAs implementation across countries



- Supporting long-term compliance with Art. III, par. 4(a), 4(b), and 5 (NLP)
- Supporting long-term compliance with Art. III.4, III.5, III.7, and VI.2 (RM)



THANK YOU!



The European Union was recognized as Champion Plus for its generous support and commitment towards strengthening national legislation for migratory species for the period 2020 - 2025. This activity has been funded with the contribution granted by the European Commission under the Migratory Species Champion Programme and through the Global Public Goods and Challenges (GPGC Programme) Cooperation Agreements with UNEP.

