

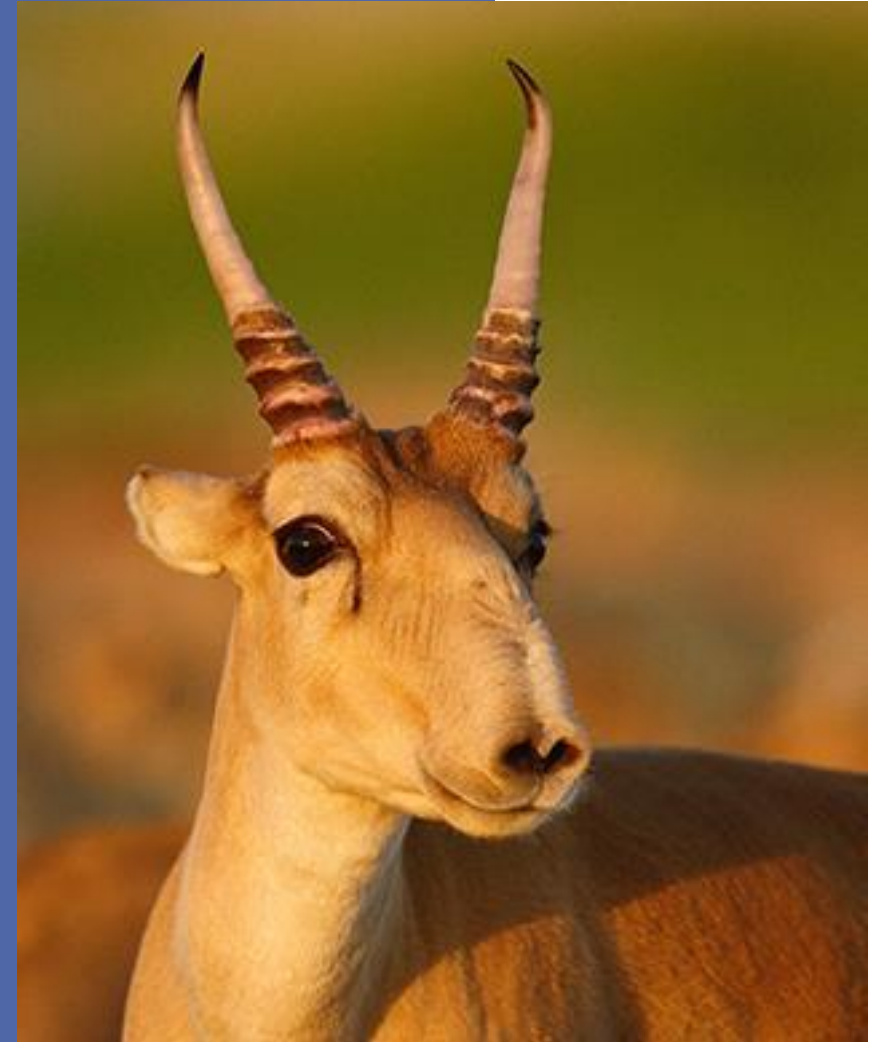


Global Workshop on CMS Legislation

Global Partnership on Ecological
Connectivity (GPEC)

Anouska Kinahan, GPEC Coordinator

3-5 June 2025, Bonn, Germany



STATE OF THE WORLD'S MIGRATORY SPECIES



“Ecological Connectivity is the unimpeded movement of species and the flow of natural processes that sustain life on Earth”.

3 out of 4

CMS-listed species are affected by 'habitat loss, degradation and fragmentation'



LAUNCH OF NEW
**GLOBAL PARTNERSHIP
ON ECOLOGICAL
CONNECTIVITY**

14 FEBRUARY 2024



Global Partnership on
Ecological Connectivity

CMS COP 14, Samarkand, Uzbekistan

Objectives

To ensure that connectivity is **maintained**, **enhanced** and **restored** by addressing related challenges, promoting informed actions and decisions based on the best available knowledge, latest science and technology, and improving the effectiveness and coherence of implemented conservation measures.



Core Partners



Partners that have a role to play in the strategic direction of GPEC and contribute directly to the implementation of its objectives

Collaborating Partners



Organizations, institutions or initiatives responsible for executing or contributing to specific areas of work or projects agreed under the partnership.



Convention on
Biological Diversity



United Nations
Convention to Combat
Desertification



CLIMATE
CHANGE



THE WORLD BANK



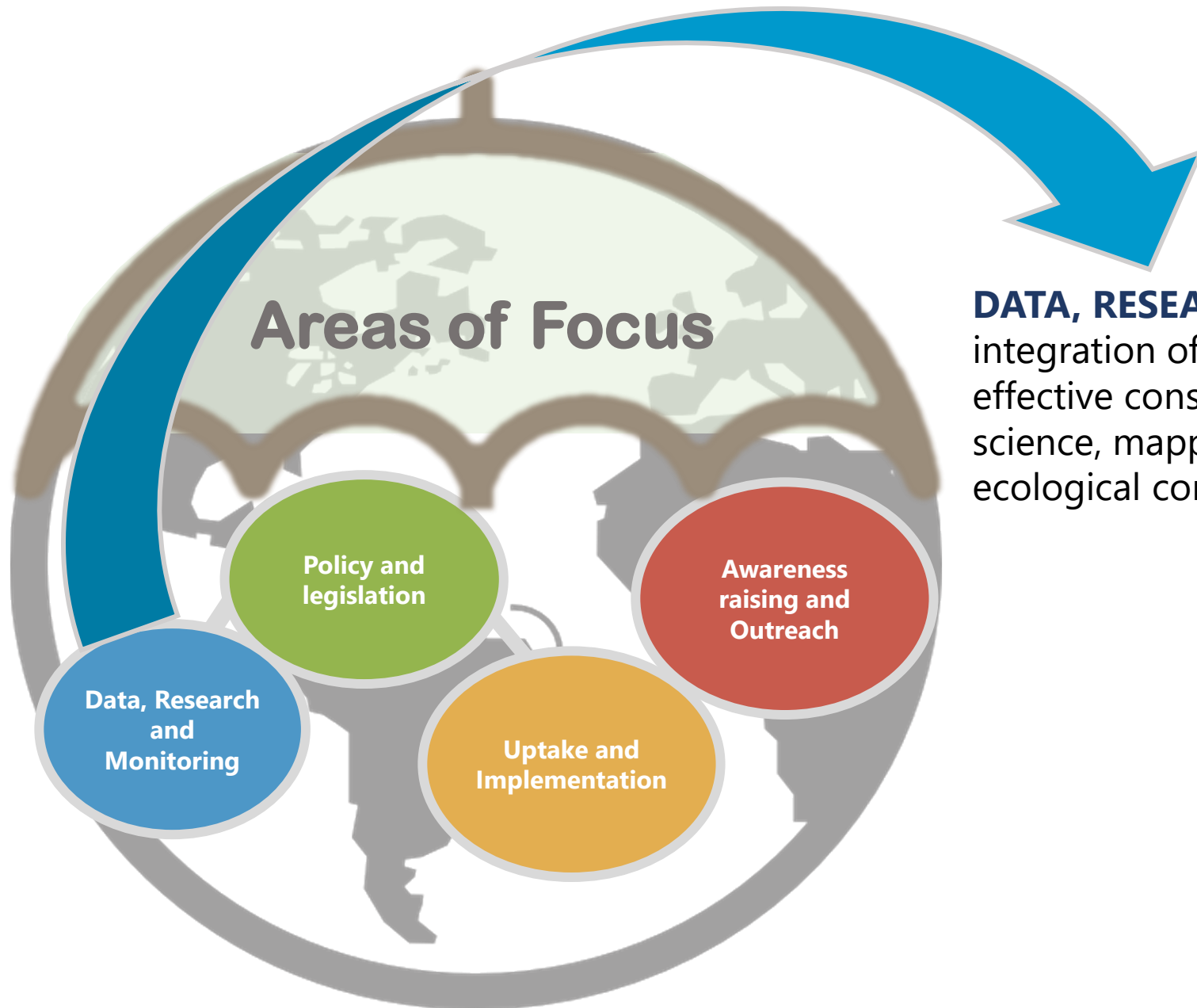
Local Governments
for Sustainability



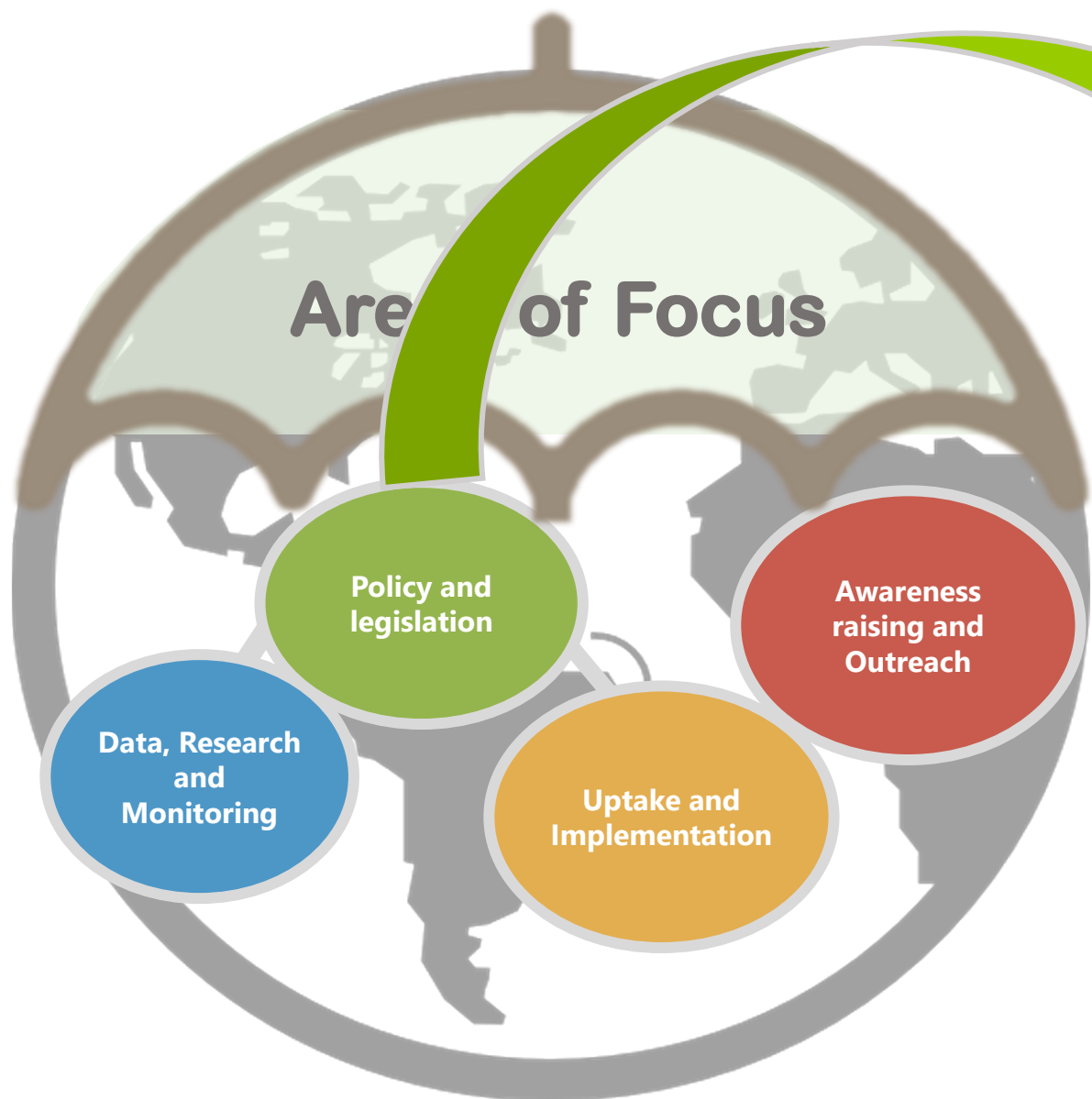
Play a crucial role in supporting the delivery of GPEC outcomes



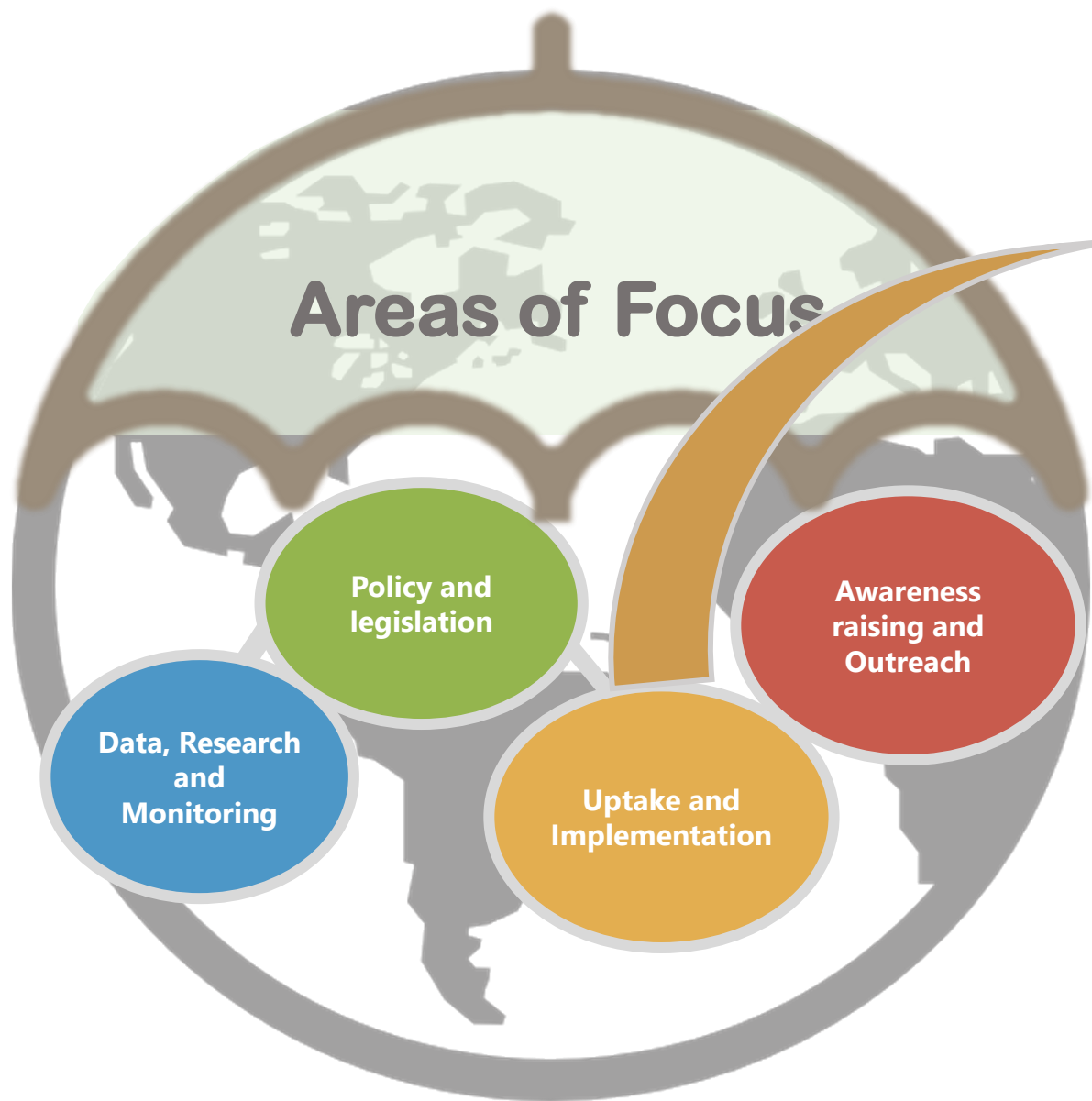
Focus Areas



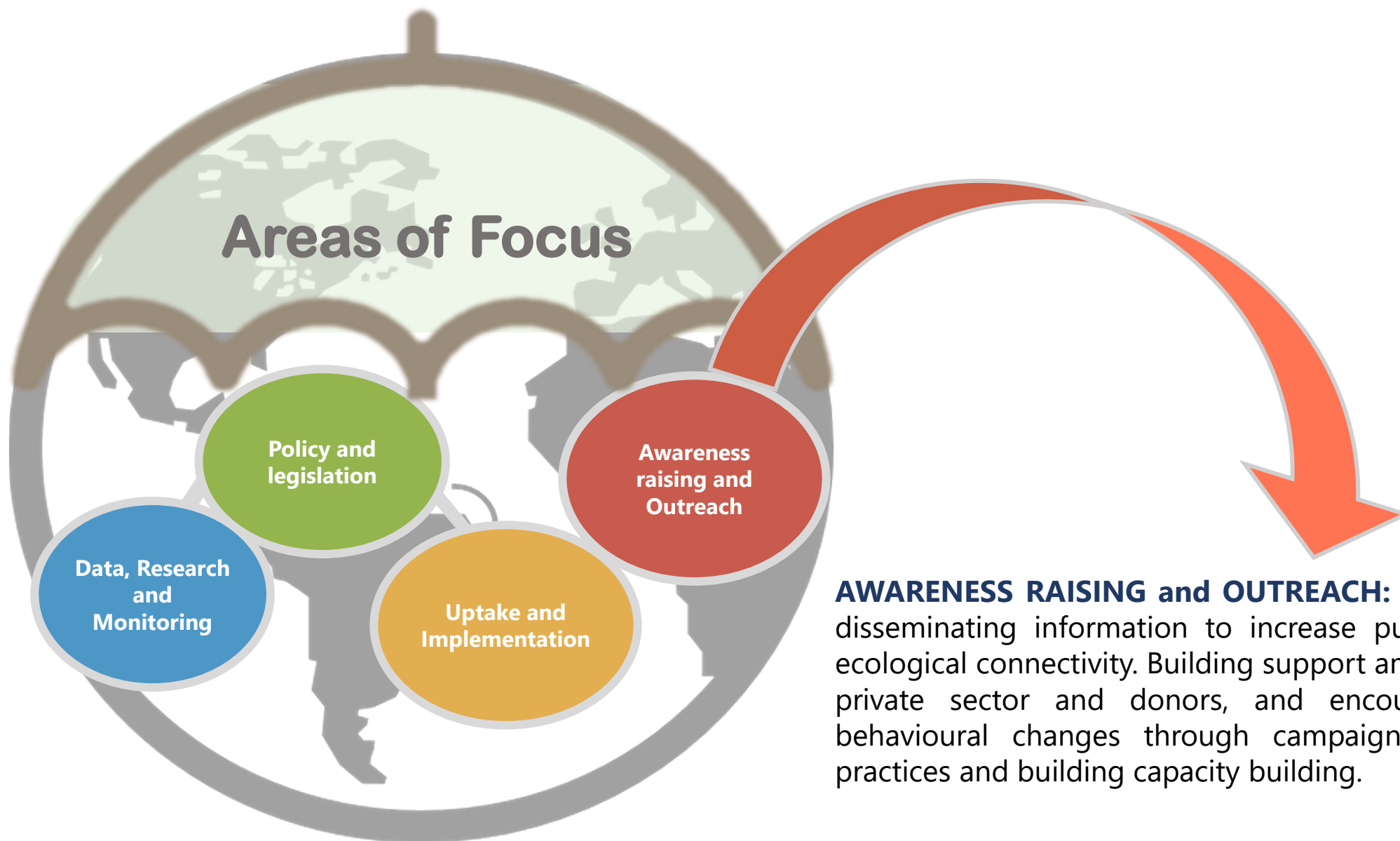
DATA, RESEARCH and MONITORING: Prioritizing the integration of scientific data and research to inform effective conservation measures through improved science, mapping, analysis, and measurement of ecological connectivity.



POLICY and LEGISLATION: Supporting evidence-based decision-making by facilitating the assessment and improvement of policies and legislation that address ecological connectivity.



UPTAKE and IMPLEMENTATION: Promoting the effective implementation of connectivity conservation on the ground and implementing specific projects, initiatives and activities that translate the partnership's strategies and objectives into tangible actions.



AWARENESS RAISING and OUTREACH: Raising awareness and disseminating information to increase public understanding of ecological connectivity. Building support among policymakers, the private sector and donors, and encouraging practical and behavioural changes through campaigns, disseminating best practices and building capacity building.



THANK YOU!

