

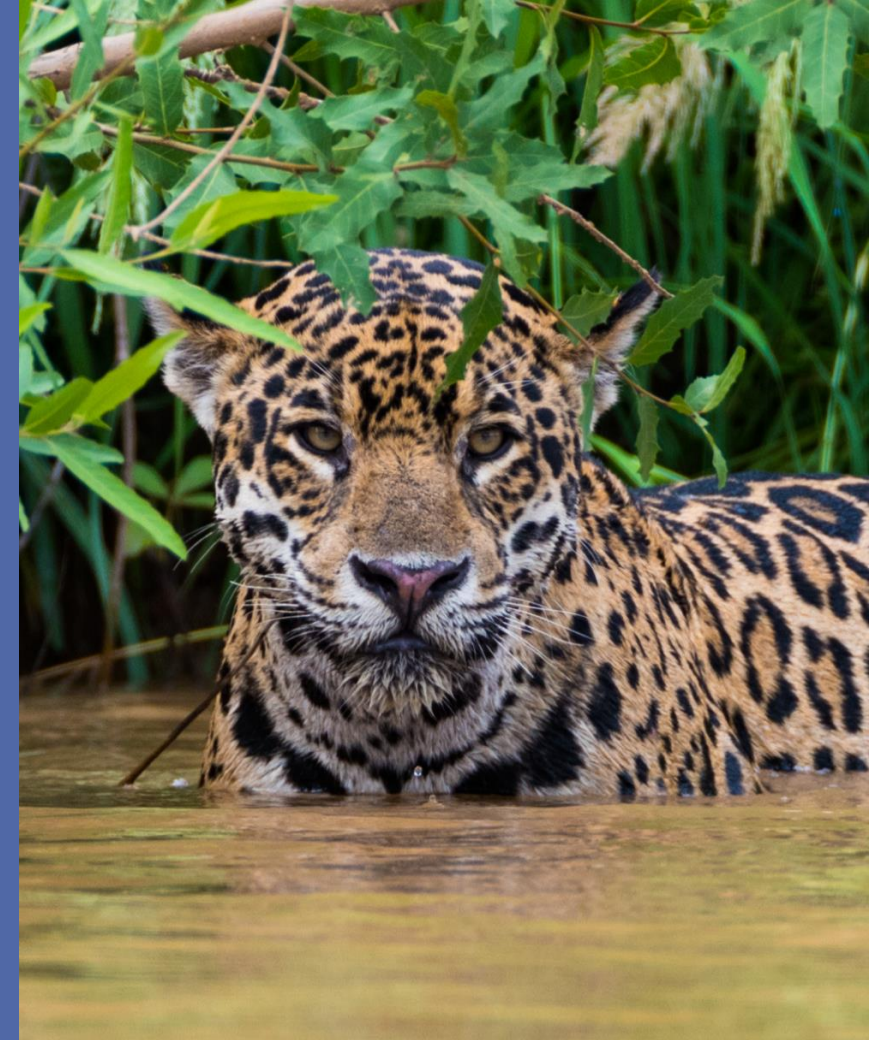


Global Workshop on CMS Legislation

Draft Legislative Guidance for Maintaining,
Improving, and Restoring Ecological Connectivity

Erica Lyman, Professor of Law at Lewis & Clark Law
School

3-5 June 2025, Bonn, Germany



The European Union was recognized as Champion Plus for its generous support and commitment towards strengthening national legislation for migratory species for the period 2020 - 2025. This activity has been funded with the contribution granted by the European Commission under the Migratory Species Champion Programme and through the Global Public Goods and Challenges (GPGC Programme) Cooperation Agreements with UNEP.





Ecological Connectivity under CMS

Article III.4(a) & (b): Parties shall endeavor to (1) “conserve and restore habitat” and (2) “prevent, remove, compensate for or minimize as appropriate the adverse effects of activities or obstacles that seriously impede or prevent the migration of [Appendix I] species.”

“The unimpeded movement of species, connection of habitats without hinderance and the flow of natural processes that sustain life on Earth”

Resolution 14.16 on Ecological Connectivity

CONSIDERATION OF VARIOUS SCALES

GOALS: maintain, enhance, and restore connectivity

SPATIAL CONSIDERATIONS: land, air, water (marine and freshwater)

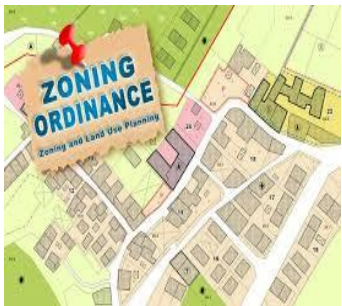
LEGAL SCOPE: regional/transboundary, national, and local

PROPERTY OWNERSHIP: private and public

LEGAL TOOLS FOR ECOLOGICAL CONNECTIVITY

A wide legislative and policy landscape:

Land-use and
Zoning Laws



Area-based
Legislation



Non-market
Tools [Property
Laws]



Market-based
Tools



Environmental
Impact
Assessments

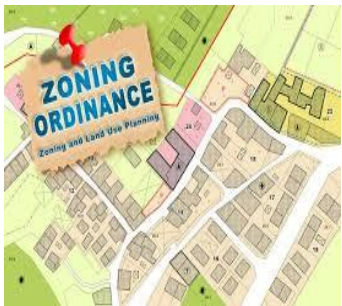


LEGAL TOOLS FOR ECOLOGICAL CONNECTIVITY

Mapping, Spatial Planning, Monitoring, and Participation



Land-use and Zoning Laws



Area-based Legislation



Non-market Tools [Property Laws]



Market-based Tools



Environmental Impact Assessments



Land-use and Zoning Laws

- Zoning for connectivity
- Using classification opportunities to balance development and connectivity
- Regulation of incompatible uses, design, and siting



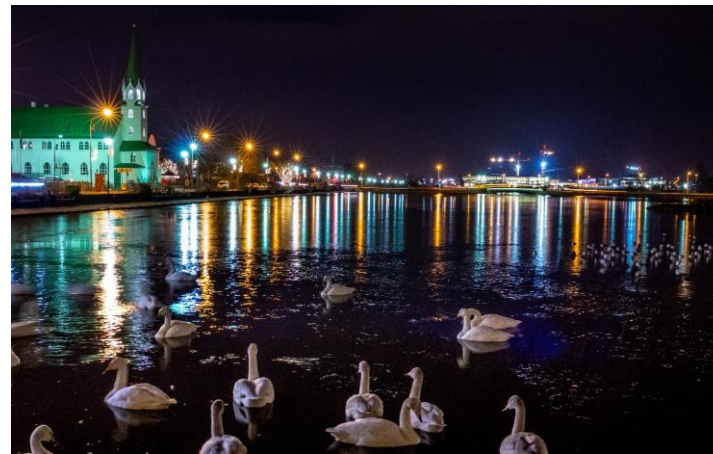
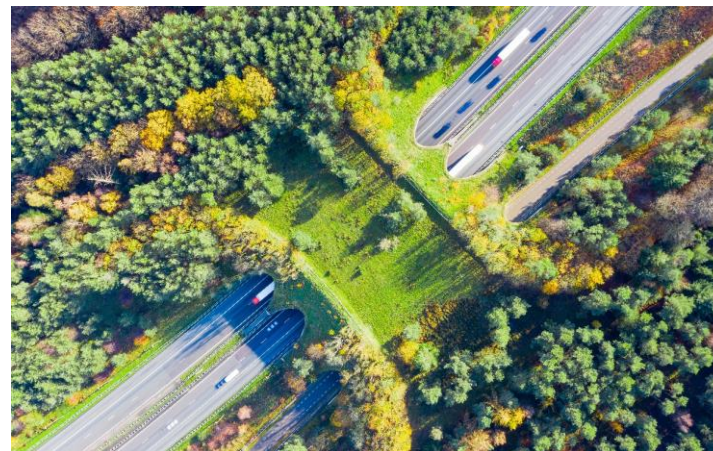


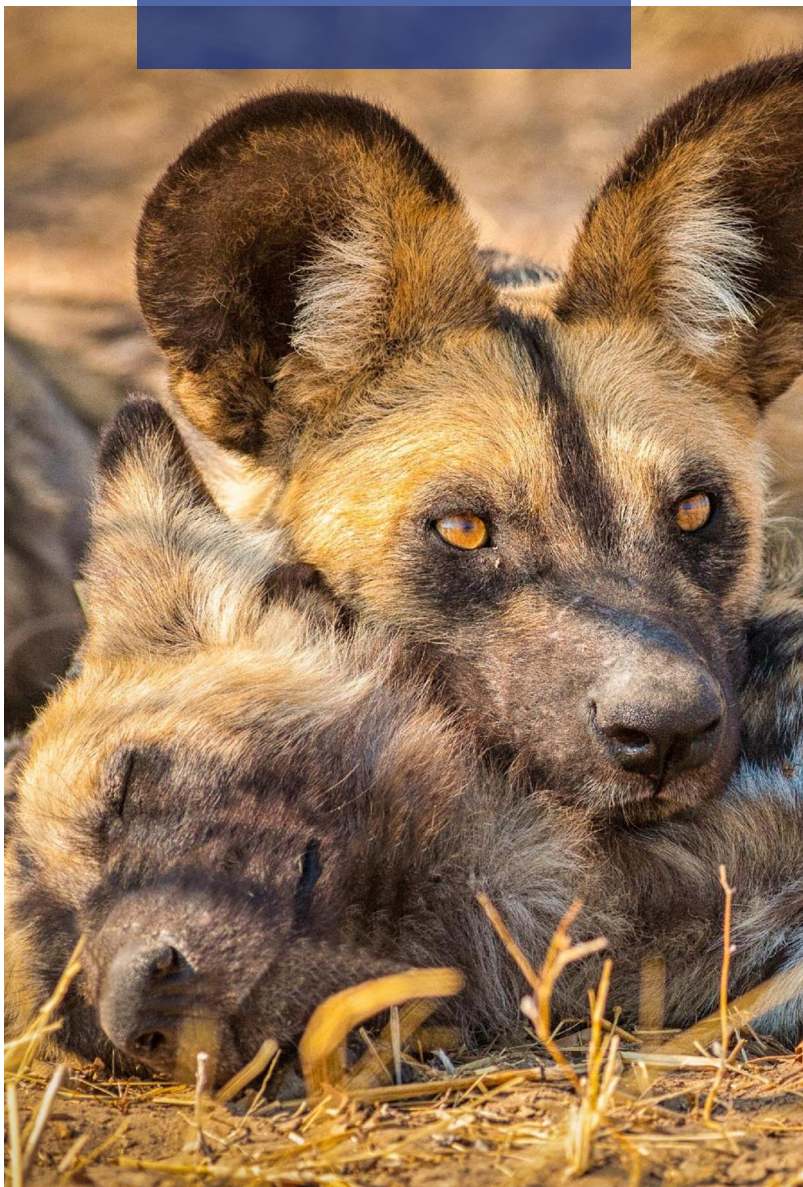
Area-based Management Legislation

- Site selection based on connectivity
- Managing and planning for connectivity
- Importance of buffer zones and corridors
- Ecosystem-based management

Non-Market Tools [Property Laws]

- Restrictive covenants
- Conservation and connectivity easements
- Private protected areas
- Compensation and positive incentives





Market-based Tools

Positive Incentives

- Indirect funding
- Direct funding
- Market creation

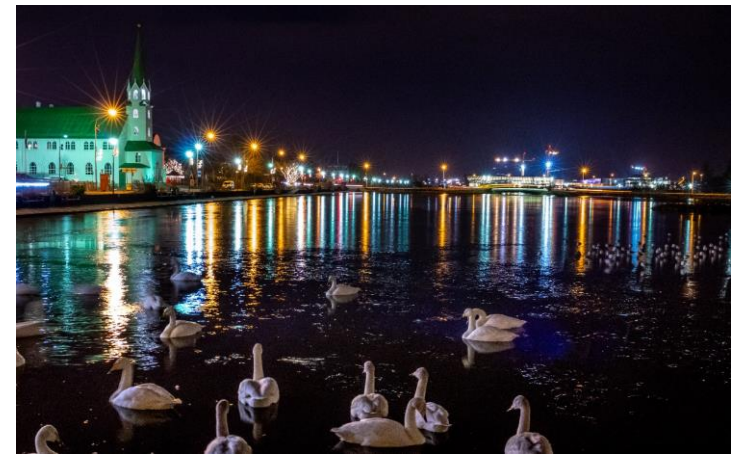
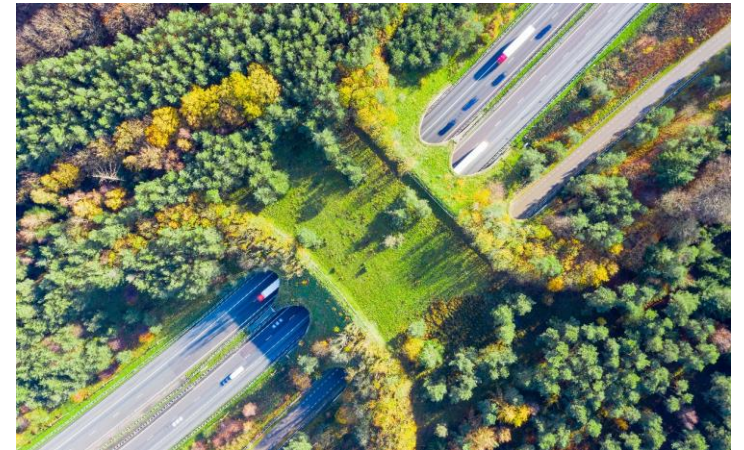
Negative Incentives

- Charges and fees
- Tax programs
- Polluter pays

Ecosystem Service Payments

Environmental Impact Assessment

- Resolution 7.2 (Rev.COP14) on Impact Assessment and Migratory Species
- Collecting baseline data
- Documenting impacts: direct, indirect, cumulative
- Identifying alternatives and mitigation measures
- Strategic Environmental Assessments



SPECIAL CONSIDERATIONS

Marine Connectivity

Hydrological Connectivity

Transboundary Connectivity

Indigenous Peoples and Connectivity

Climate Change and Connectivity



THANK YOU!



The European Union was recognized as Champion Plus for its generous support and commitment towards strengthening national legislation for migratory species for the period 2020 - 2025. This activity has been funded with the contribution granted by the European Commission under the Migratory Species Champion Programme and through the Global Public Goods and Challenges (GPGC Programme) Cooperation Agreements with UNEP.

