



SUPPORTING
CONSERVATION
LEADERS



**BEACONS OF HOPE:
SAVING KENYA'S VULTURES FROM
POISONING**
TALK FOR CMS TAG MEETING
RAPTORS MOU



مندوق محمد بن زايد للمحافظة على الطيور الجارحة
MOHAMED BIN ZAYED
RAPTOR CONSERVATION FUND

THE PROBLEM?





SUPPORTING
CONSERVATION
LEADERS





SUPPORTING
CONSERVATION
LEADERS





SUPPORTING
CONSERVATION
LEADERS





Economic cost of livestock lost to lions and other wildlife species

The total economic cost attributed to livestock losses amounted to US\$959,240.20 with cattle accounting for 55% (US\$529,069.40), shoats 42.67% (US\$410,414.40), and donkeys 2.3% (US\$22,176.80) (Fig. 5). On average, each household lost US\$4820.3 (SE = ±424) to wildlife within the period of 18 months covered by the survey and US\$1952.44 (SE = ±206) to lions alone. With reference to individual wildlife species, lions accounted for 40.5% (US\$388,535.2) of total economic losses followed by hyenas 29.5% (US\$282,843.1), leopards 12.4% (US\$118,553.5), elephants 7.7% (US\$74,206.6), cheetahs 5.5% (US\$52,816.71), jackals 3.4% (US\$32,724.33), and baboons 1% (US\$9560.79), respectively (Fig. 6). The differences between



SUPPORTING
CONSERVATION
LEADERS



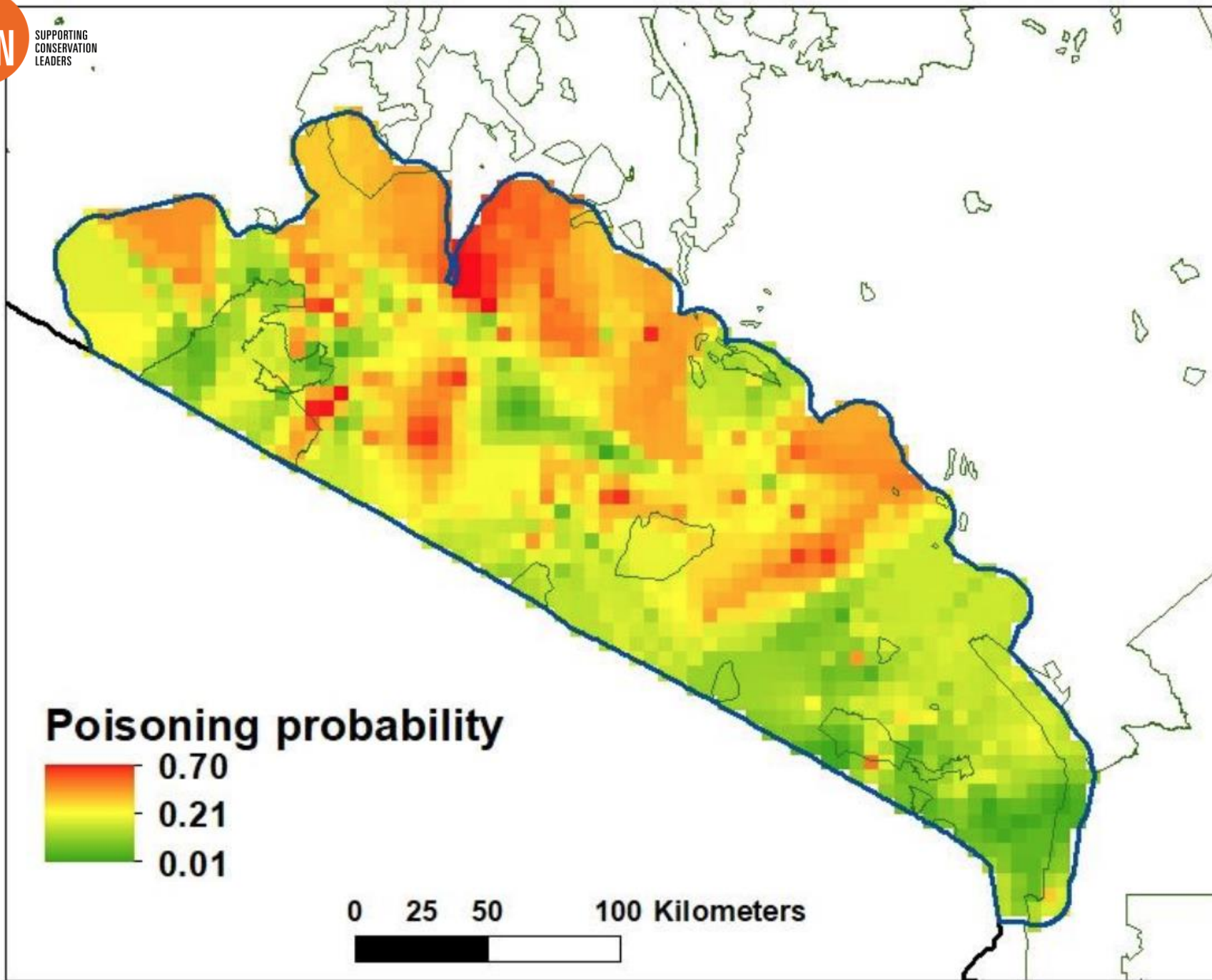


THE PRACTICAL SOLUTION





SUPPORTING
CONSERVATION
LEADERS





SUPPORTING
CONSERVATION
LEADERS

WILDLIFE POISONING INTERVENTION TRAINING



Training Results

1235 Individuals Trained

85 Groups

931 Poisoning Awareness

304 Livestock Management

2 Lion Ranger Teams





SUPPORTING
CONSERVATION
LEADERS





SUPPORTING
CONSERVATION
LEADERS





SUPPORTING
CONSERVATION
LEADERS





SUPPORTING
CONSERVATION
LEADERS



Photo: Jamie Manuel



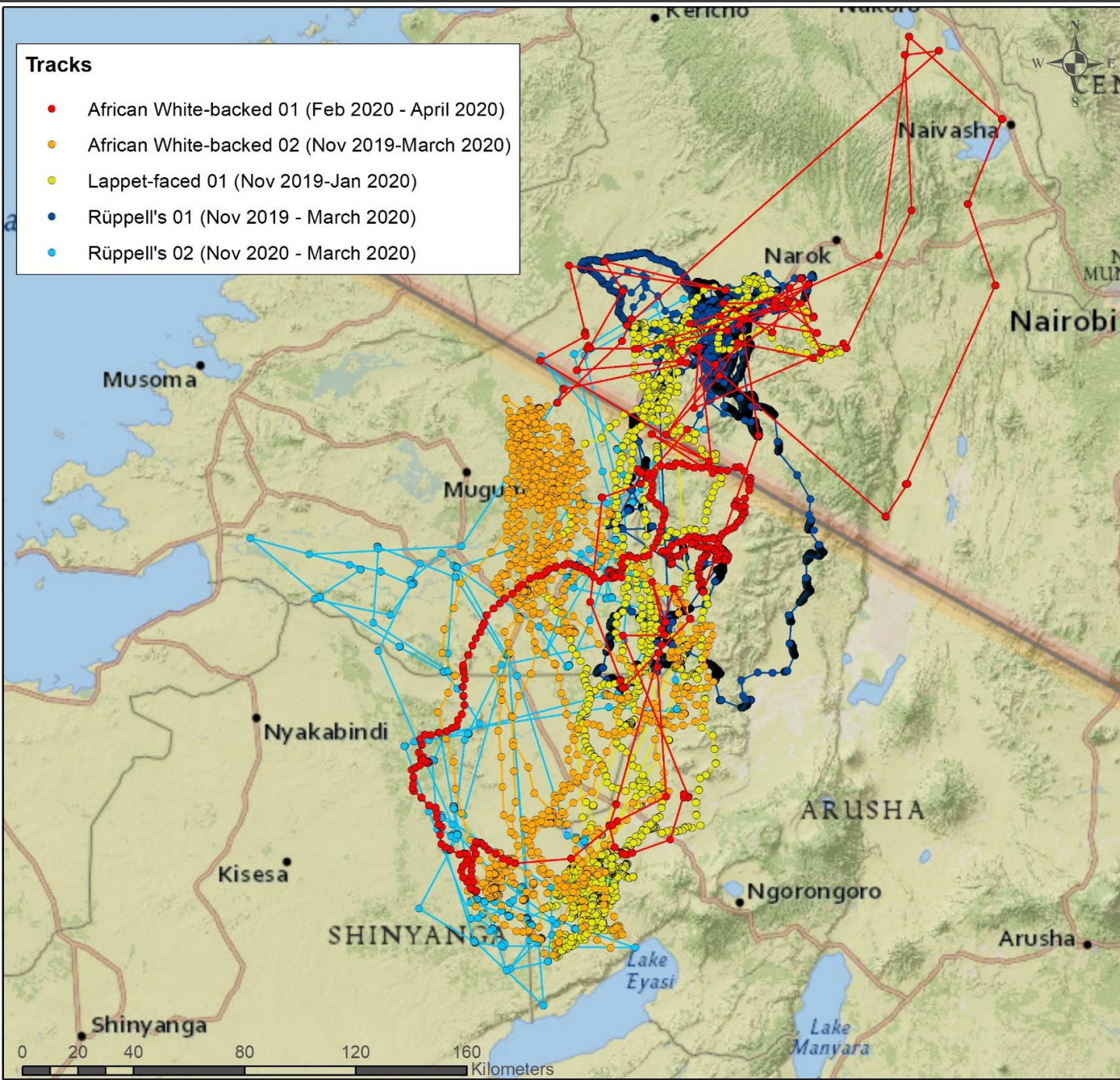
SUPPORTING
CONSERVATION
LEADERS



Photos: Jamie Manuel

Tracks

- African White-backed 01 (Feb 2020 - April 2020)
- African White-backed 02 (Nov 2019-March 2020)
- Lappet-faced 01 (Nov 2019-Jan 2020)
- Rüppell's 01 (Nov 2019 - March 2020)
- Rüppell's 02 (Nov 2020 - March 2020)



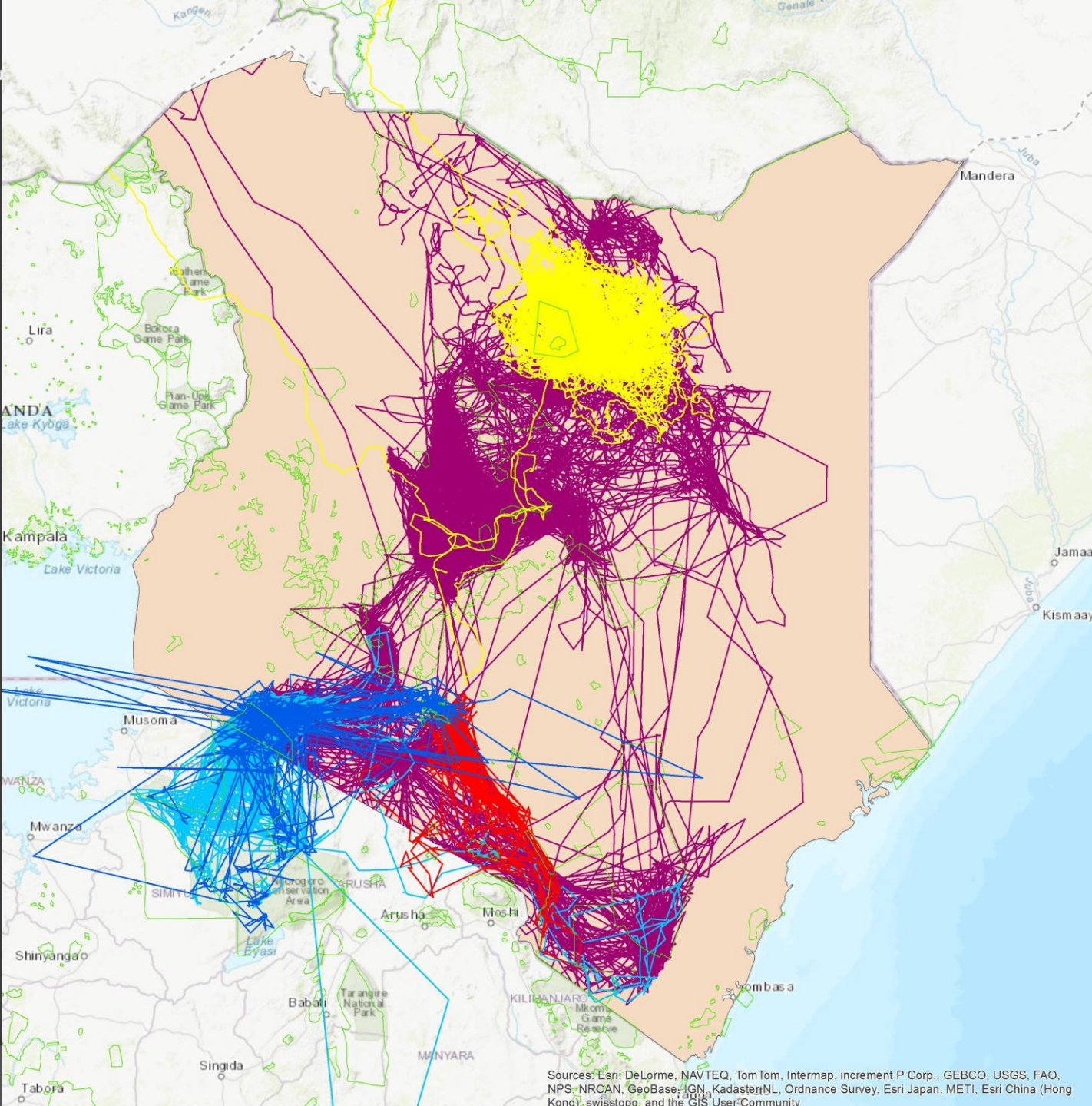
Measuring impact of effort

25+ Adult Vultures deployed with Transmitters





SUPPORTING
CONSERVATION
LEADERS



Sources: Esri, DeLorme, NAVTEQ, TomTom, Intermap, increment P Corp., GEBCO, USGS, FAO, NPS, NRCAN, GeoBase, IGN, Kadaster(NL), Ordnance Survey, Esri Japan, METI, Esri China (Hong Kong), swisstopo, and the GIS User Community

PRELIMINARY RESULTS

	2010	2018-2020
VULTURES TAGGED	16	25
VULTURES DEAD	5	6
POISONED	5	3
COLLISIONS	0	3
MORTALITY FROM POISONING	32%	C. 12%+-

- Evidence of improved vulture survival rates in Kenya
- Stabilization or local increase in breeding pairs



12-11-2021



13-11-2021



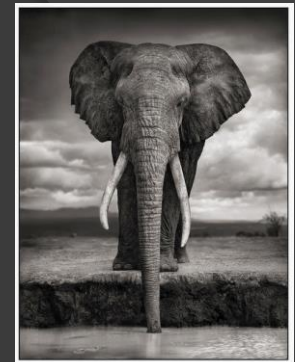
12-11-2021



12-11-2021



Partners and Collaborators



BIG LIFE
FOUNDATION





Thank you