



turning the tide
Sea Turtles



- In 1999, after having a "serious discussion" with many institutions (notably NGOs),
- The Government of Indonesia issued "the Government Regulation No. 7/1999" (27 January 1999), to formally protect the green turtle; the only species that had not been protected at that time.

turning the tide
Sea Turtles



- At local level, in 12 June 2000, the Governor Decree number 243/1999 issued, to withdraw the previous Governor Decree number 22/90, because it was in conflict with the Government Regulation No. 7/1999.
- The quota for using the Green turtle (5000/year) has been stopped since June 2000.

turning the tide
Sea Turtles

Year 2000 – 2003: The Begin of A New Era

- After undertaking a massive socialization for the protection status of Green turtle, followed by serial "training-workshops" for the local police officers, the enforcement was finally in place.
- In October 4th 2000, a boat unloaded with 90 green sea turtles were seized before entering the Tanjung Benoa Bay.
- This was for the first time, the boat owner was brought to the court.




turning the tide
Sea Turtles




Attack Back



- Strong and violence resistances from the traders & villagers occurred several times.
- They attacked the WWF Office, and burnt down the coast guard station






turning the tide
Sea Turtles




- The ban is claimed threatening the "Balinese culture"
- The ban is considered eliminating the village income

turning the tide
Sea Turtles

Coalition to reduce trade: The Ministry of Environmental Affairs, Three Governors, Academe, Regional Nature Conservation Agency, and NGOs (WWF)



WWF Knowledge & Cultural issues

- Awareness to satisfy the religious need is a delicate issue.
- It depends on the "good will & courage" of the Hindu High Priest in Bali.
- Some of them agree with the view of turtle conservationist, but some are in the "wait & see" stage.
- See the documentary CD

To avoid the occurrence of "on land seize resistance", WWF facilitates establishment of the turtle task-forces in four regions (Bali, West Nusa Tenggara, East Nusa Tenggara, and Berau of East Kalimantan).

There were 20 seizures (with more than 2000 green turtles) have been done for turtle boats destined for Bali market during 2000 – early 2004. It consisted of 13 shipment prior to entering Bali, 5 in Berau of East Kalimantan, 1 in Sumbawa strait, and 1 in Lampung Bay of Sumatera.

Issue of being seized "on the land"

WWF Some turtles that released back

WWF Alternative Livelihoods

Establishment of a network of turtle-based tourism, to conserve critical marine turtle population in Indonesia

Legend:

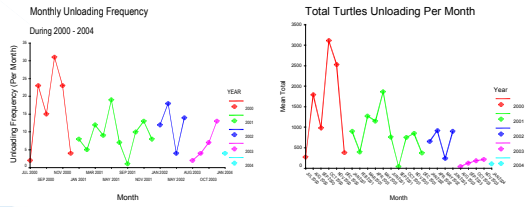
- Green Turtle
- Leatherback sea turtle
- Black-chinned noddies
- Red-footed booby
- Red-tailed tropicbird
- Brown noddies
- Blue-footed booby
- Black noddies
- Black tern

Source: WWF & WCS 2008

Data Collected From Tanjung Benoa Alone

NO	Year	Month	Date of Seizure	Boat Name	Boat Owner	Boat Type	Belonged to the Village	Preiced Total Tuna	Year	Month	Seizure Frequency	Sea to Village (km)	Total Tuna
1	2000	July	26/7/00	Pusa-Sinar	Janar	Hagan	100.000	100	2000	July	2	600.000	270
2	2000	July	27/7/00	Egusa-Uda	Sanjar	Hagan	100.000	175	2000	July	12	4.000.000	1720
3	2000	August	14/08	Wasa-Balat	Tika	Datar	100.000	100	2000	Oct	21	4.000.000	3.000
4	2000	August	23/08	Sisi-Ulawa	Dadan	Datar	100.000	30	2000	Nov	20	2.000.000	2.000
5	2000	August	24/08	Pusa-Tegal	Ariand	Melan	100.000	100	2000	Dec	4	100.000	300
6	2000	August	24/08	Soga-1	Arta	Lawa	100.000	100	2001	Jan	3	1.000.000	900
7	2000	August	24/08	Sudra-Wala	Har	Katu	100.000	100	2001	Feb	5	800.000	400
8	2000	August	24/08	Wasa-Daring	Mahar	Hagan	100.000	100	2001	Mar	10	2.000.000	1.100
9	2000	August	24/08	Pusa-Duda	Maha	Melan	100.000	30	2001	May	10	1.000.000	1.000
10	2000	August	14/08	Sudra-Wala	Melan	Datar	100.000	100	2001	Jun	8	700.000	270
11	2000	August	14/08	Tuka	Li	Melan	100.000	100	2001	Jul	10	1.000.000	600
12	2000	August	24/08	Sisi-Ulawa	Lanjar	Hagan	5.000	30	2001	Aug	18	4.000.000	900
13	2000	August	24/08	Sisi-Ulawa	Lanjar	Hagan	5.000	30	2001	Nov	4	600.000	200
14	2000	August	24/08	Pusa-Duda	Maha	Melan	100.000	30	2002	Jan	14	4.000.000	900
15	2000	August	24/08	Sudra-Wala	Melan	Datar	100.000	100	2002	Mar	10	1.000.000	600
16	2000	August	24/08	Sudra-Wala	Melan	Datar	100.000	100	2002	Apr	10	1.000.000	600
17	2000	August	24/08	Sudra-Wala	Melan	Datar	100.000	100	2002	May	10	1.000.000	600
18	2000	August	24/08	Sudra-Wala	Melan	Datar	100.000	100	2002	Jun	10	1.000.000	600
19	2000	August	24/08	Sudra-Wala	Melan	Datar	100.000	100	2002	Jul	10	1.000.000	600
20	2000	August	24/08	Sudra-Wala	Melan	Datar	100.000	100	2002	Aug	10	1.000.000	600
21	2000	August	24/08	Sudra-Wala	Melan	Datar	100.000	100	2002	Sep	10	1.000.000	600
22	2000	August	24/08	Sudra-Wala	Melan	Datar	100.000	100	2002	Oct	10	1.000.000	600
23	2000	August	24/08	Sudra-Wala	Melan	Datar	100.000	100	2002	Nov	10	1.000.000	600
24	2000	August	24/08	Sudra-Wala	Melan	Datar	100.000	100	2003	Jan	6	600.000	300

Reduce trend in unloading frequency, so does the total traded turtles



If Bali is good for tourists, why not for me???

No worries mate, IOSEA give us other stuff to play with

