

Role of conservation science in the ACI: an example from WildCRU



Professor Amy Dickman
Director, WildCRU

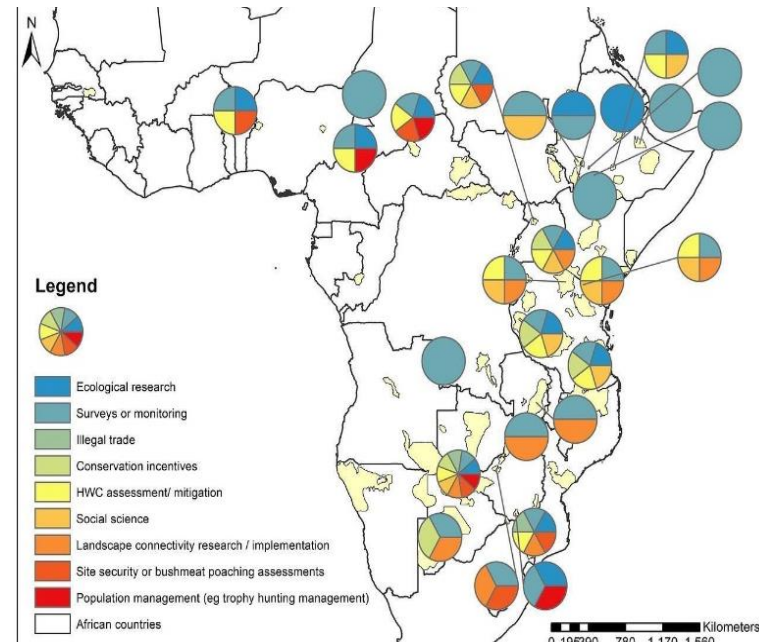
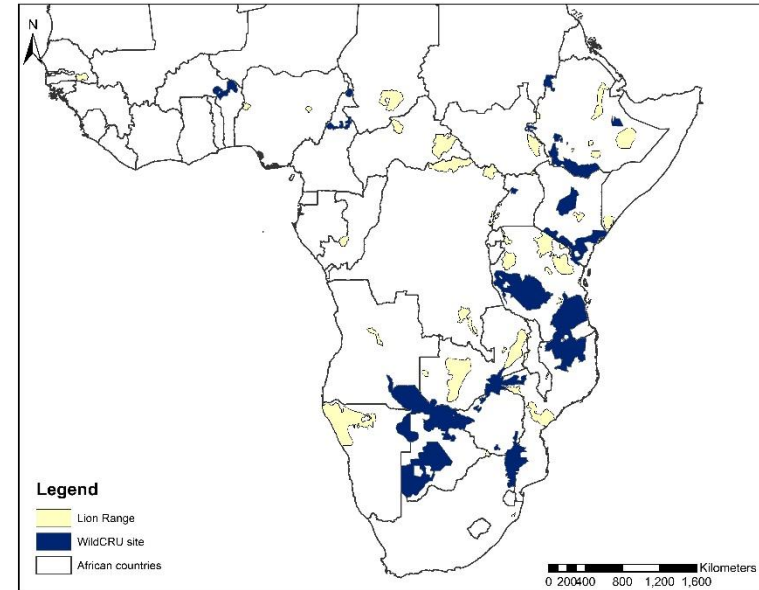


UNIVERSITY OF
OXFORD

WILDCRU 
Wildlife Conservation Research Unit

Brief overview of WildCRU

- Wildlife Conservation Research Unit, part of Oxford University
- Aim to transform conservation through world-class science
- >80 research staff & students
- Particular focus on ACI species
- Have worked or helped support work in many landscapes, though often just in sections of them
- Wide variety of work, but mainly ecology, surveys, HWC



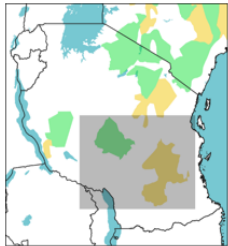
Example towards Objective 1: strategic planning



A collaborative effort

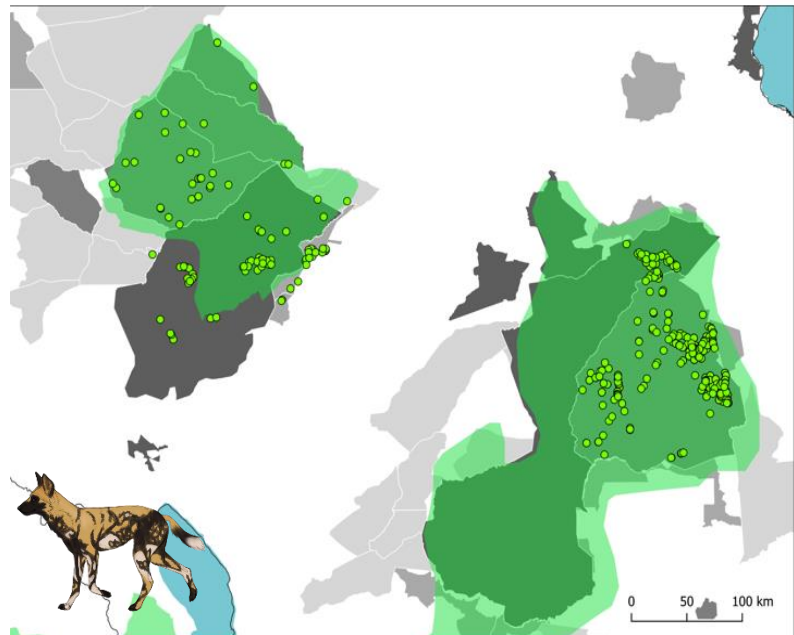
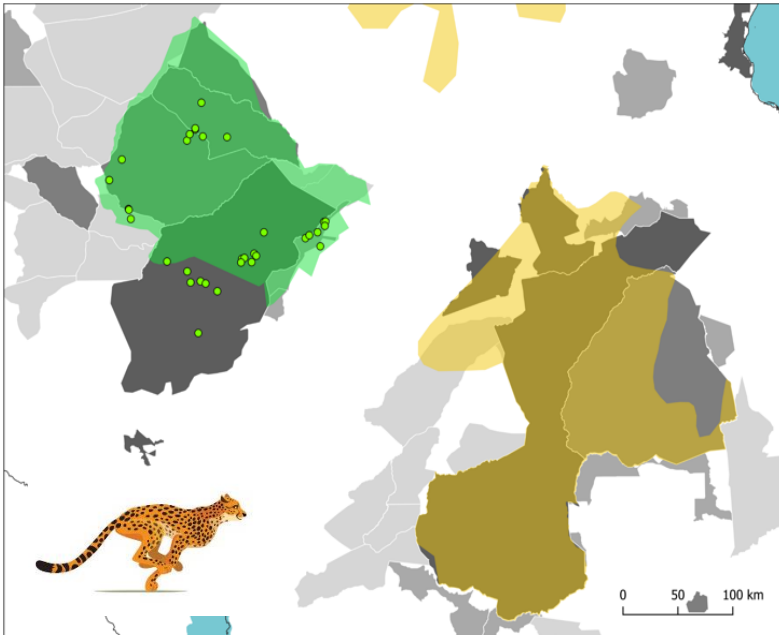


- Collaborative surveys with TAWA, TAWIRI & other partners in Selous-Nyerere & Rungwa-Ruaha: all 4 species
- Resulted in updated density estimates & likely adjustment of range maps, e.g. cheetah not present in Selous-Nyerere



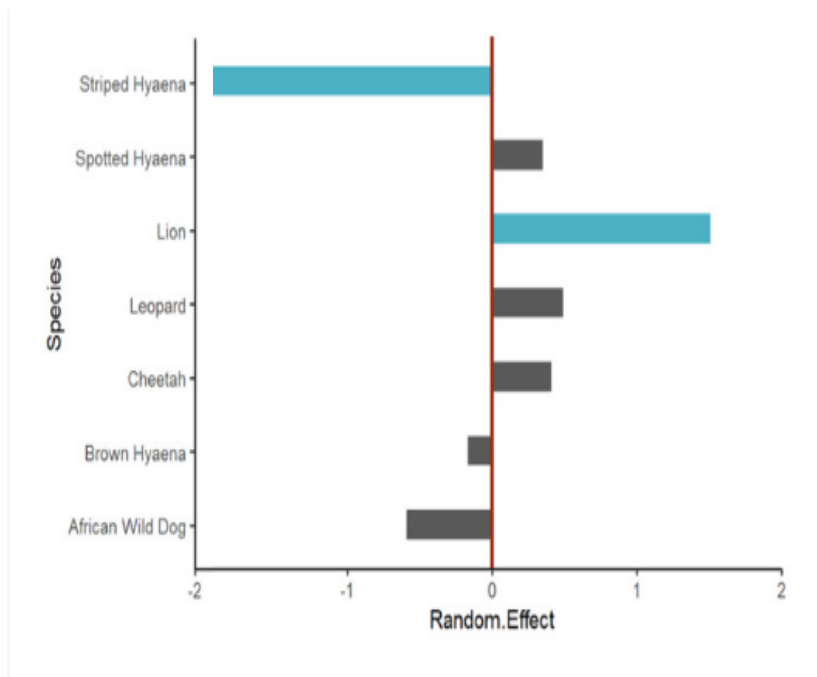
● Cheetah detection
 IUCN Cheetah Range: 2022
 ■ Extant (resident)
 ■ Possibly Extant (resident)

Protected Area
 ■ National Park
 ■ Game Reserve
 ■ Wildlife Management Area
 ■ Game Controlled Area
 or Open Area

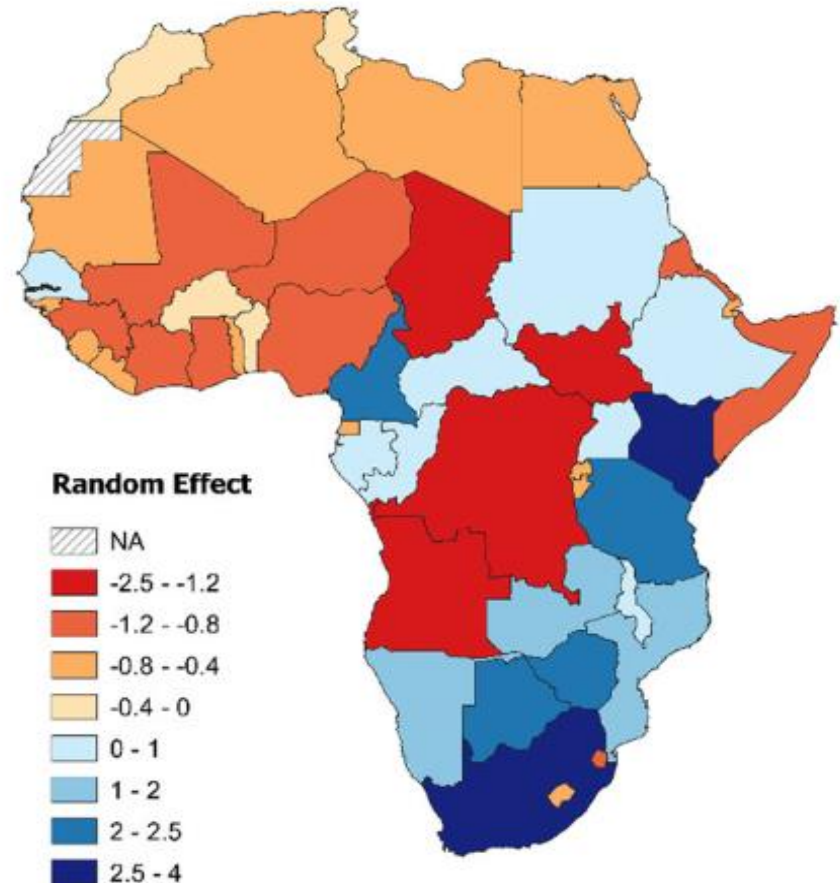


Example towards Objective 1: strategic planning

- Go beyond site-level surveys to wider analyses, e.g. highlighting understudied species & countries



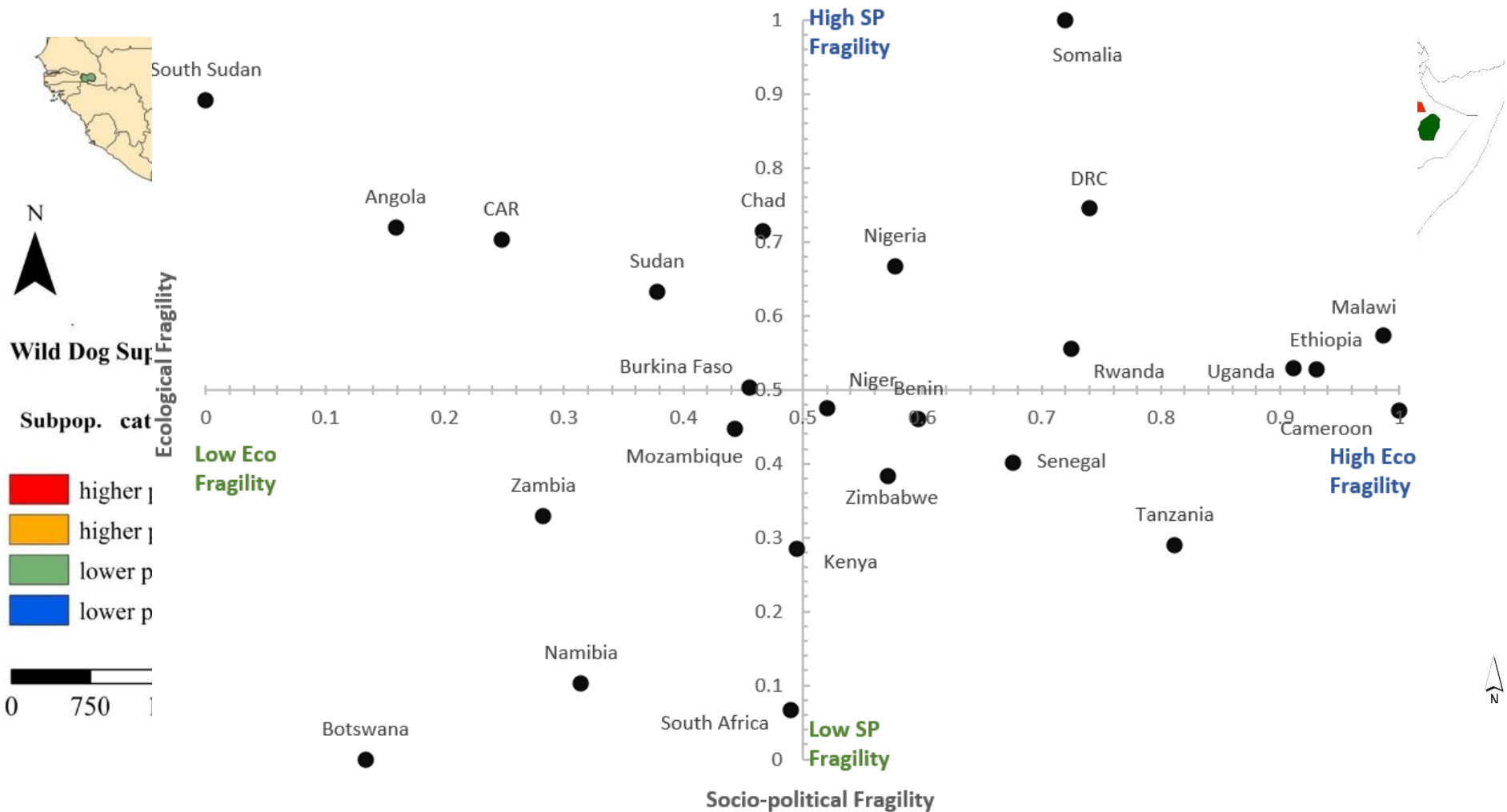
Lions over-represented in research: wild dogs slightly under-represented: but still need more on all species in many places!



Red/orange countries less represented in research

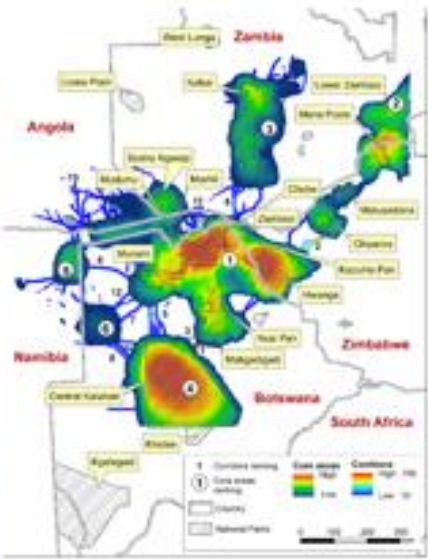
Example towards Objective 1: strategic planning

- Work with other researchers, range countries & ALD allows analysis of fragility of ACI species

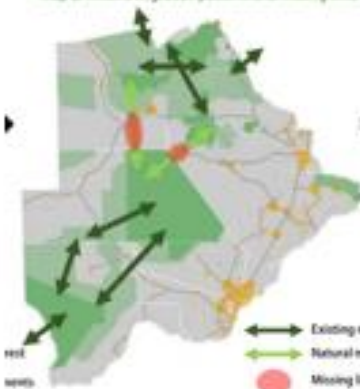


Example towards Objective 2: land use planning

- Work with many partners in range states to incorporate knowledge in national plans, e.g. land use plans



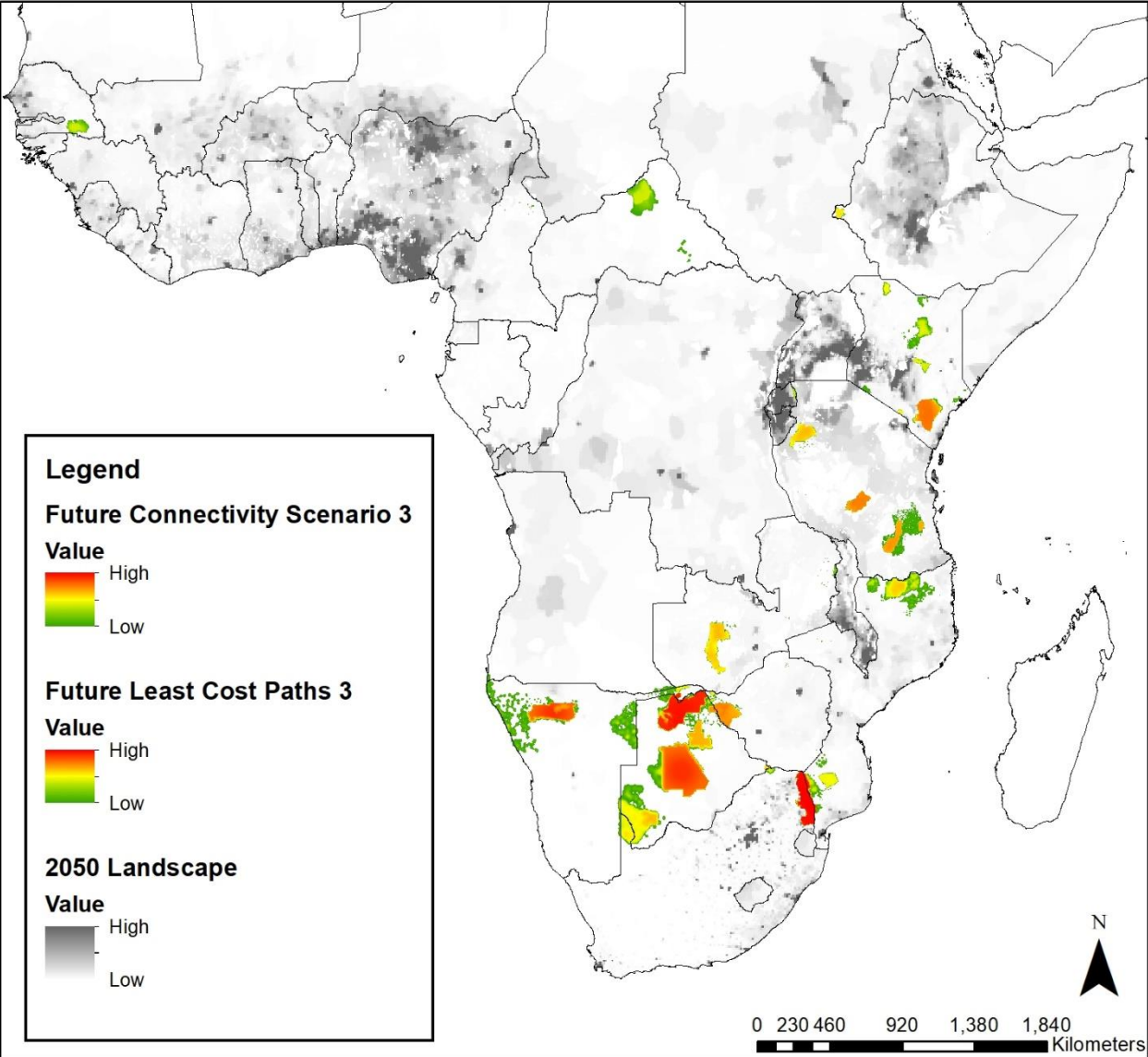
Map 2: Wildlife migration patterns and missing links



Map 3: Green corridor concept



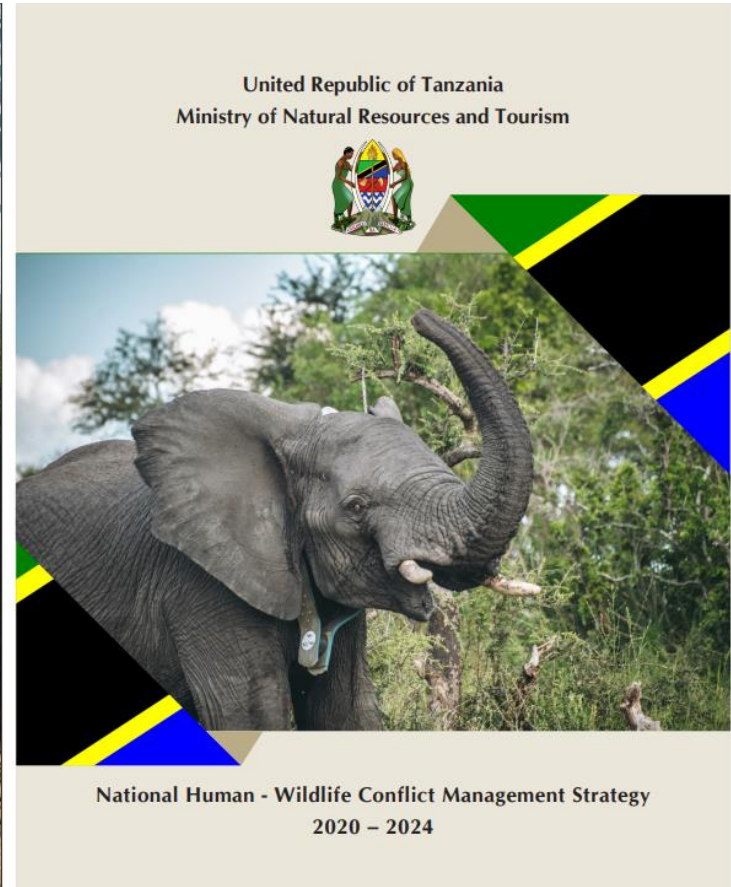
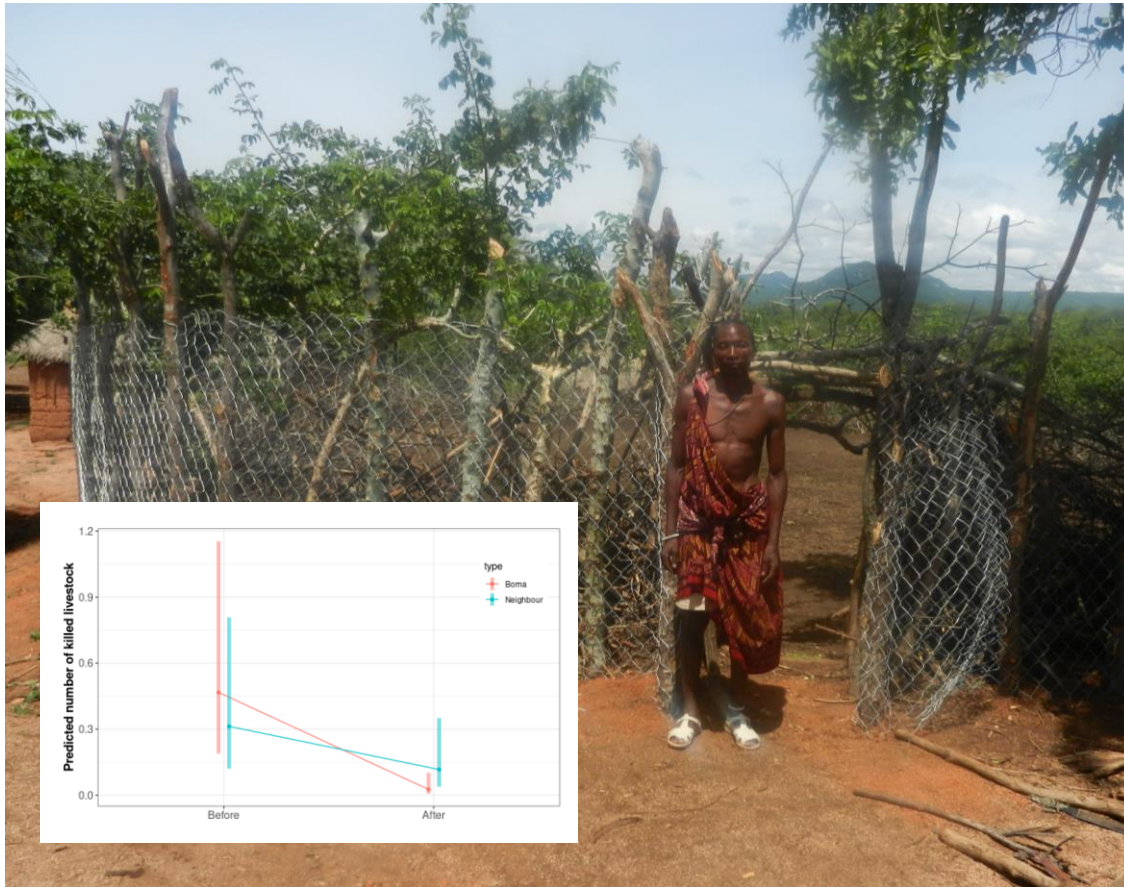
Example towards Objective 2: land use planning



2050
75% of protected areas lost
~15,000 lions

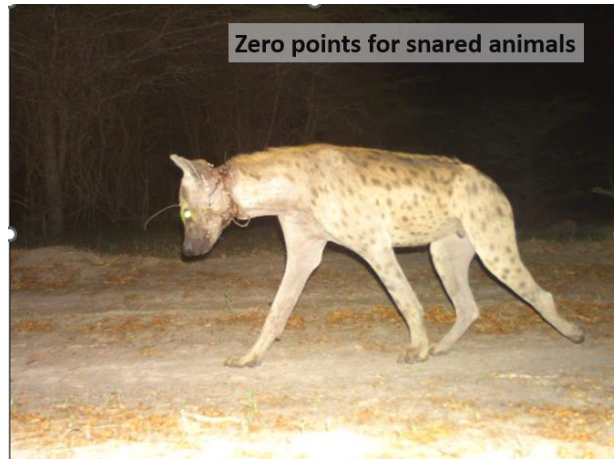
Example towards Objective 5: conflict & coexistence

- Major focus: understanding extent of conflict, drivers, developing & assessing mitigation, helping inform policies



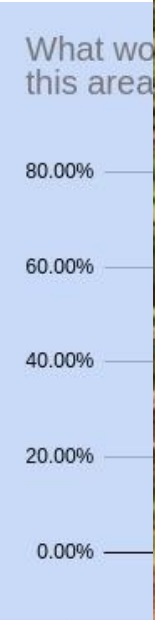
Example towards Objective 5: conflict & coexistence

- Go beyond academia into practice, e.g. Lion Landscapes' development & scaling up of community camera-trapping



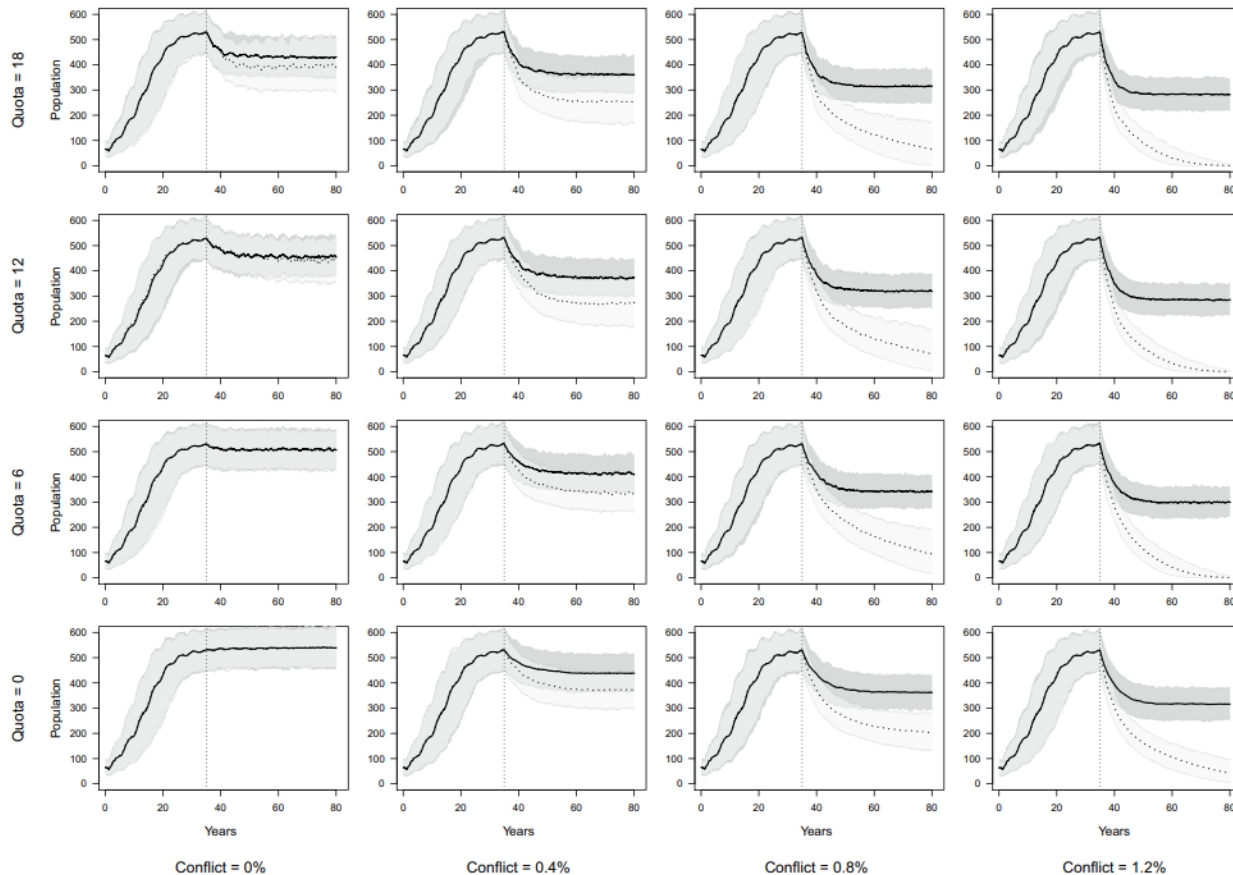
Example towards Objective 5: conflict & coexistence

- Generates tangible benefits decided on by local communities, clearly linked to wildlife presence inc prey



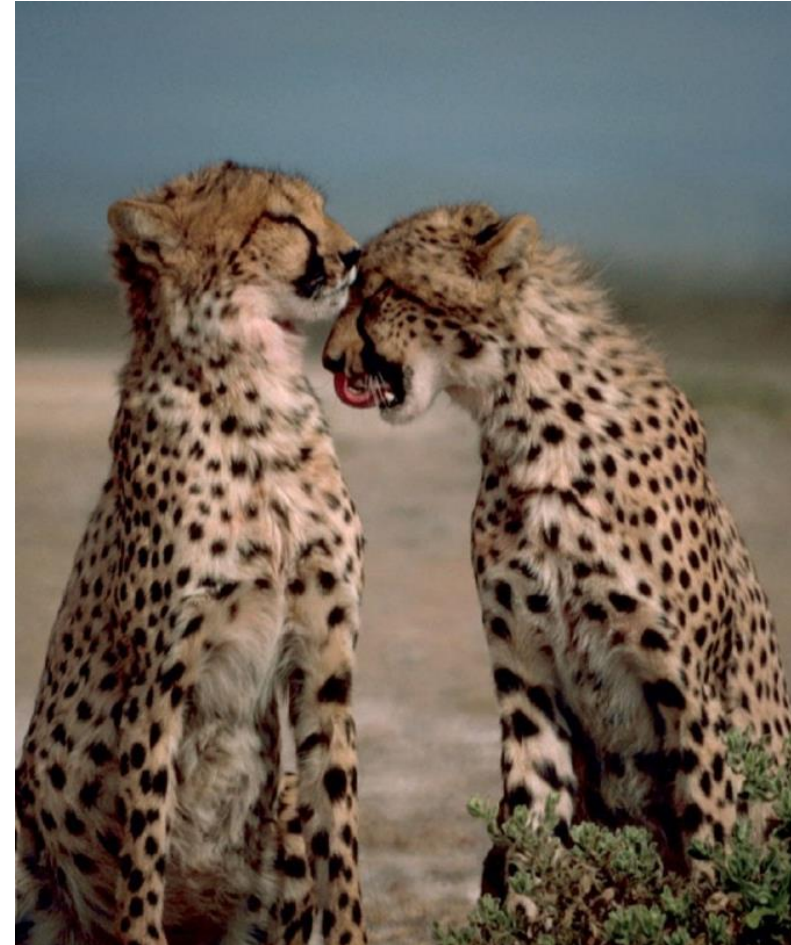
Example towards Objective 6: sustainable use

- Extensive work on trophy hunting – work with national authorities & others to understand & inform TH



How organisations like WildCRU can support ACI

- Work with interested parties to share capacity & support with surveys, HWC etc
- Link to wide network of experts
- Contribution of survey data to ALD/ACD, range states, IUCN etc – can help inform policies
- Help with assessment of how different methods work
- Diverse training & capacity building, from field interns to Diploma & degrees, PhDs etc



Considerations with scientific research

- Very useful, but not always easy
- Who owns the data? Who has access to it? How does it stay in country? Who decides what to publish & how?
- What if results create tensions in the country or contradict existing official positions?
- Academic outputs often papers: maybe not most useful for local people, range states or policies
- How can we do better? What do range states actually need?

