

PRE -



Team Quiz

CMS COP12 Regional Preparatory Workshop for Asia

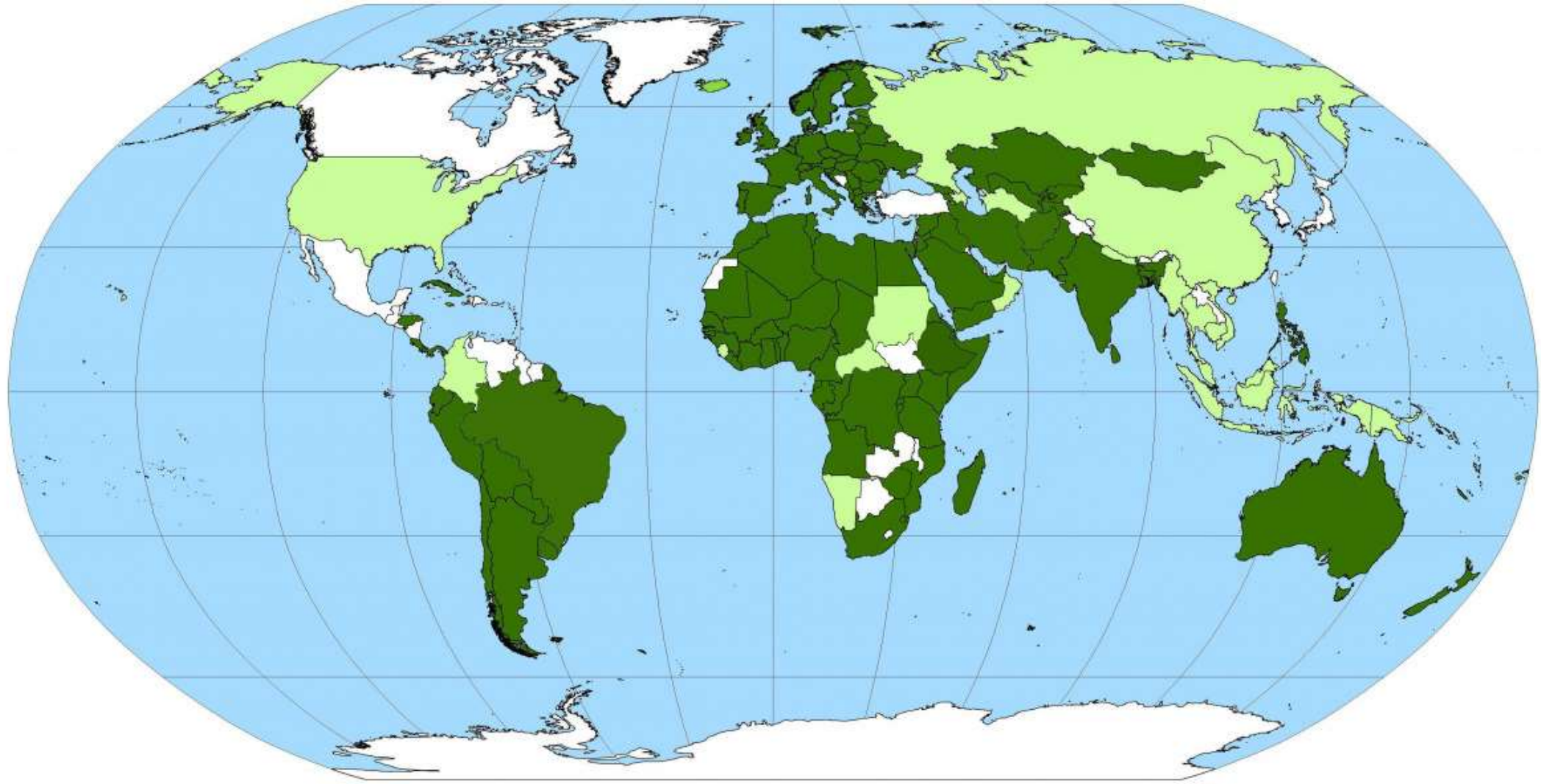
Tim Dodman
Quiz
14 August 2017
Bonn, Germany



1. What is the theme of COP12?



2. CMS Parties 2017: How many?



3. What is the CMS definition of a MIGRATORY SPECIES?

*I can move 2
meters a day ... Do
I count?*



CMS Standing Committee

4. Which Asian countries are current members of the CMS Standing Committee?



Implementation Cycle for CMS Family Instruments

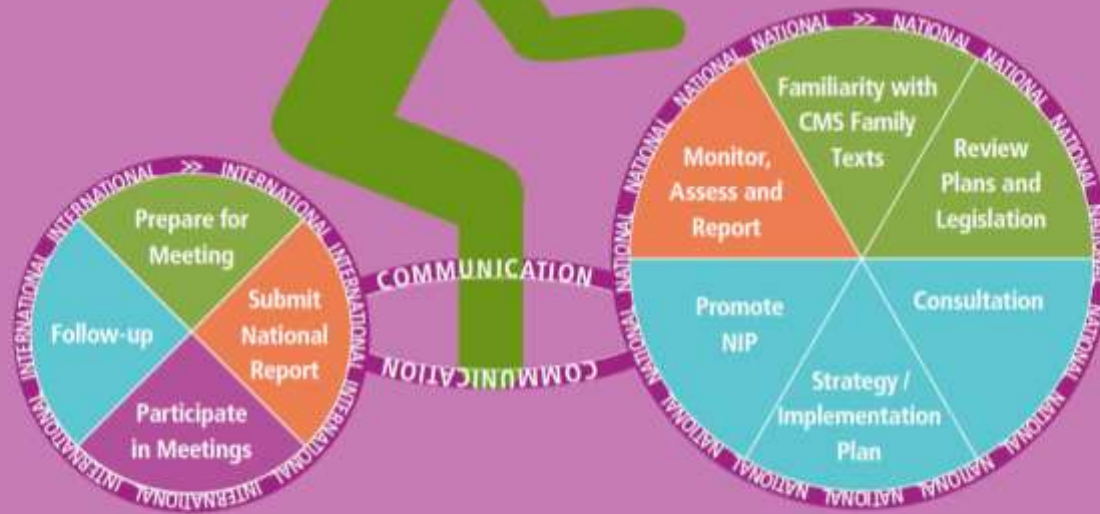


Figure 5.1 Implementation Cycle for the CMS Family Instruments

5. What are the first two steps in the cycle?



SUSTAINABLE DEVELOPMENT GOALS



6. What is the name of the agenda which includes the 17 SDGs?





**CMS Parties recommend to ensure
renewable energy technologies are
not harmful to migratory species**

7. Name 3 CMS renewable energy guidelines

CMS Parties recommend to ensure renewable energy technologies are not harmful to migratory species

7 AFFORDABLE AND
CLEAN ENERGY



8. Which species are most at threat from large turbines?



A herd of elephants is seen from behind, walking across a dry, open landscape towards a distant horizon under a clear blue sky. The elephants are silhouetted against the lighter ground and sky.

CLIMATE ACTION IS ESSENTIAL FOR PRESERVING WILDLIFE & THE VITAL ECOSYSTEM SERVICES THEY PROVIDE TO HUMANITY.

#####

#CMS COP12
Global Wildlife Conference
Manila, Philippines
23 -28 October 2017

*Sustainable Development
for Wildlife & People*

The United Nations logo, featuring a stylized world map with latitude and longitude lines, surrounded by a circular border of colored segments.

The icon for Sustainable Development Goal 13, Climate Action, showing a green square with a white globe and the number 13.

The icon for Sustainable Development Goal 14, Life Below Water, showing a blue square with a white fish and the number 14.

The icon for Sustainable Development Goal 15, Life on Land, showing a green square with a white tree and the number 15.

Sustainable Development
for Wildlife & People



© Commonwealth of Australia

A snow leopard is captured in a side profile, walking across a rocky outcrop covered in a thin layer of snow. The leopard's fur is a mix of grey, brown, and white, with dark rosettes and spots. Its tail is thick and covered in dark rings. The background features a steep, snow-dusted mountain slope with patches of dark evergreen trees. The sky is a pale, overcast white.



Programme of Work on Climate Change & Migratory Species



Vulnerability Assessment

10. Who should determine which species vulnerable to climate change should be listed or uplisted on the CMS Appendices, as appropriate:

- a. CMS Scientific Council
- b. CMS Parties
- c. International NGOs
- d. Donald Trump





11. Name 5 key threats faced by marine species



12. How many Range States support the isolated Arabian Sea population of Humpback Whale?



13. Approximately what proportion of humpback whales of the Arabian Sea have entanglement wounds or scars?



14. Where & what?

15 LIFE
ON LAND



15 LIFE
ON LAND



15. Approximately
what is the
maximum
weight of an
adult male
Great Bustard?

16. What is the name of the
zone where a male
Great Bustard displays
during breeding?



Conservation of Migratory Landbirds in the African-Eurasian Region, especially in relation to Sustainable Land Use in Africa



17. What key issues are Parties urged to address?



18. What does CAMI stand for?



19. How many species does CAMI currently address?



20. Which animals appear in the logo?!





Answers

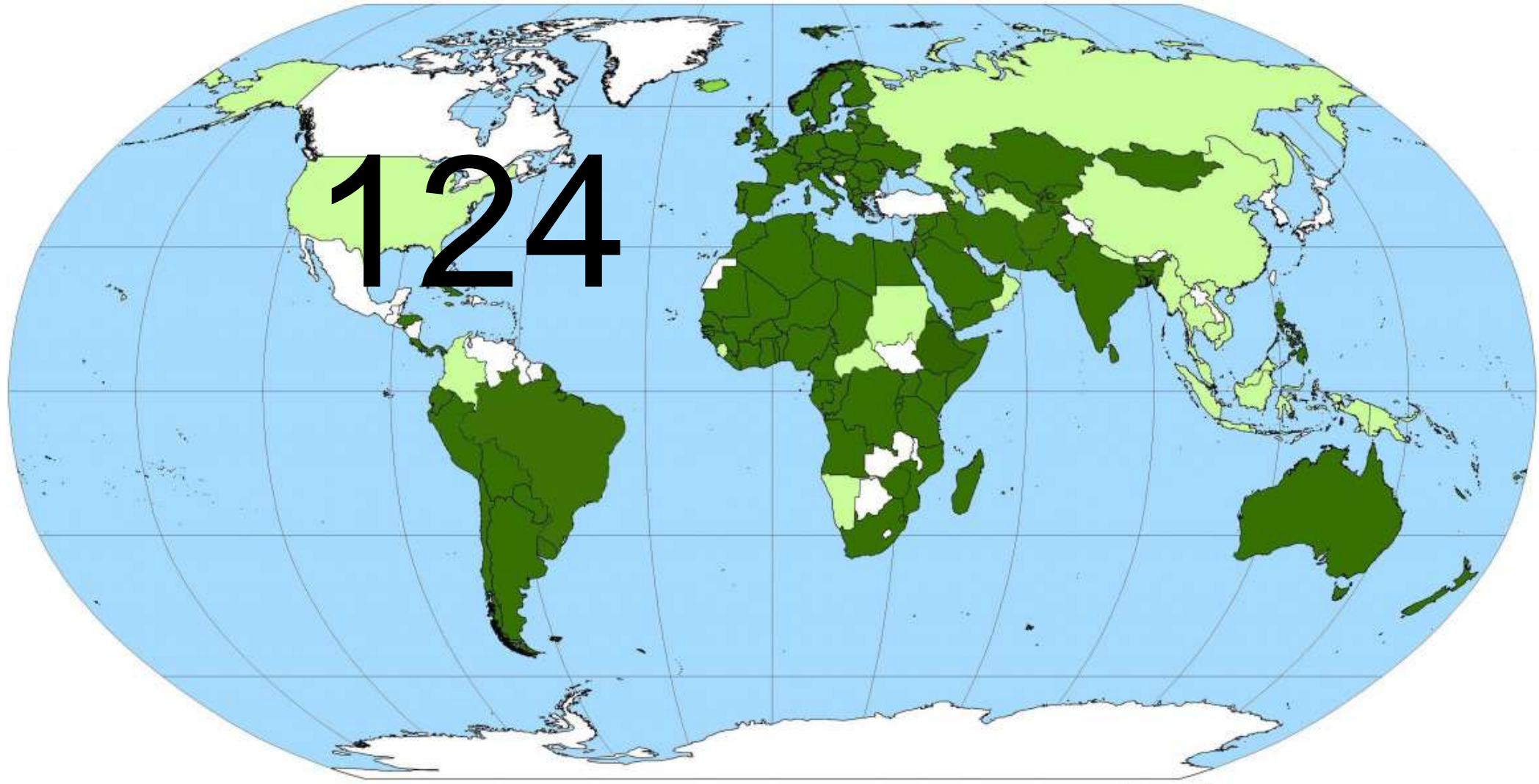
1. What is the theme of COP12?

Their Future is Our Future - Sustainable Development for Wildlife and People



2. CMS Parties 2017: How many?

2



3. What is the CMS definition of a MIGRATORY SPECIES?

*I can move 2
meters a day ... Do
I count?*



CMS Definition of migration



- “Migratory species” means the entire population or any geographically separate part of the population of any species or lower taxon of wild animals, a significant proportion of whose members cyclically and predictably cross one or more national jurisdictional boundaries.

The CMS definition has a biological background but it is formulated to meet policy and political criteria.

Terminology like '*cyclically*' and '*predictably*' have later been interpreted to include a cycle of any nature or frequency, thus including those which were astronomical (circadian, annual etc.), meteorological and biological (such as successive life stages), which could be anticipated to recur in a given set of circumstances, though not necessarily at regular intervals in time.



CMS Standing Committee

4. Which Asian countries are current members of the CMS Standing Committee?

Mongolia
Kyrgyzstan



Implementation Cycle for CMS Family Instruments

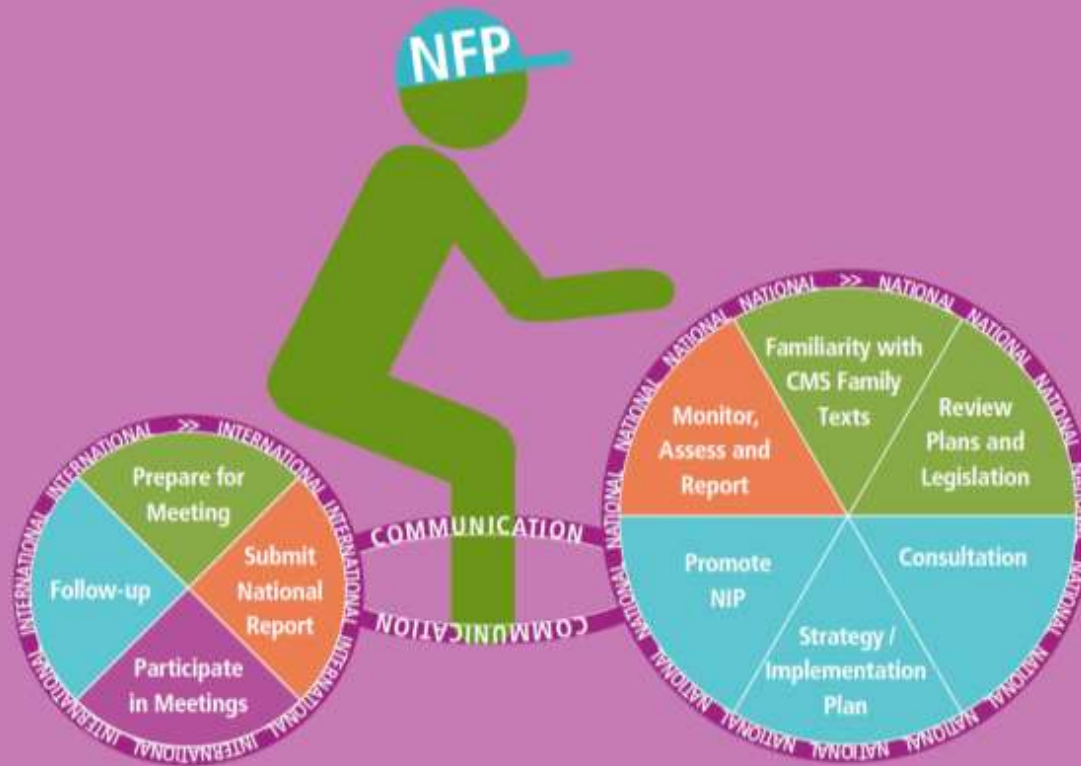
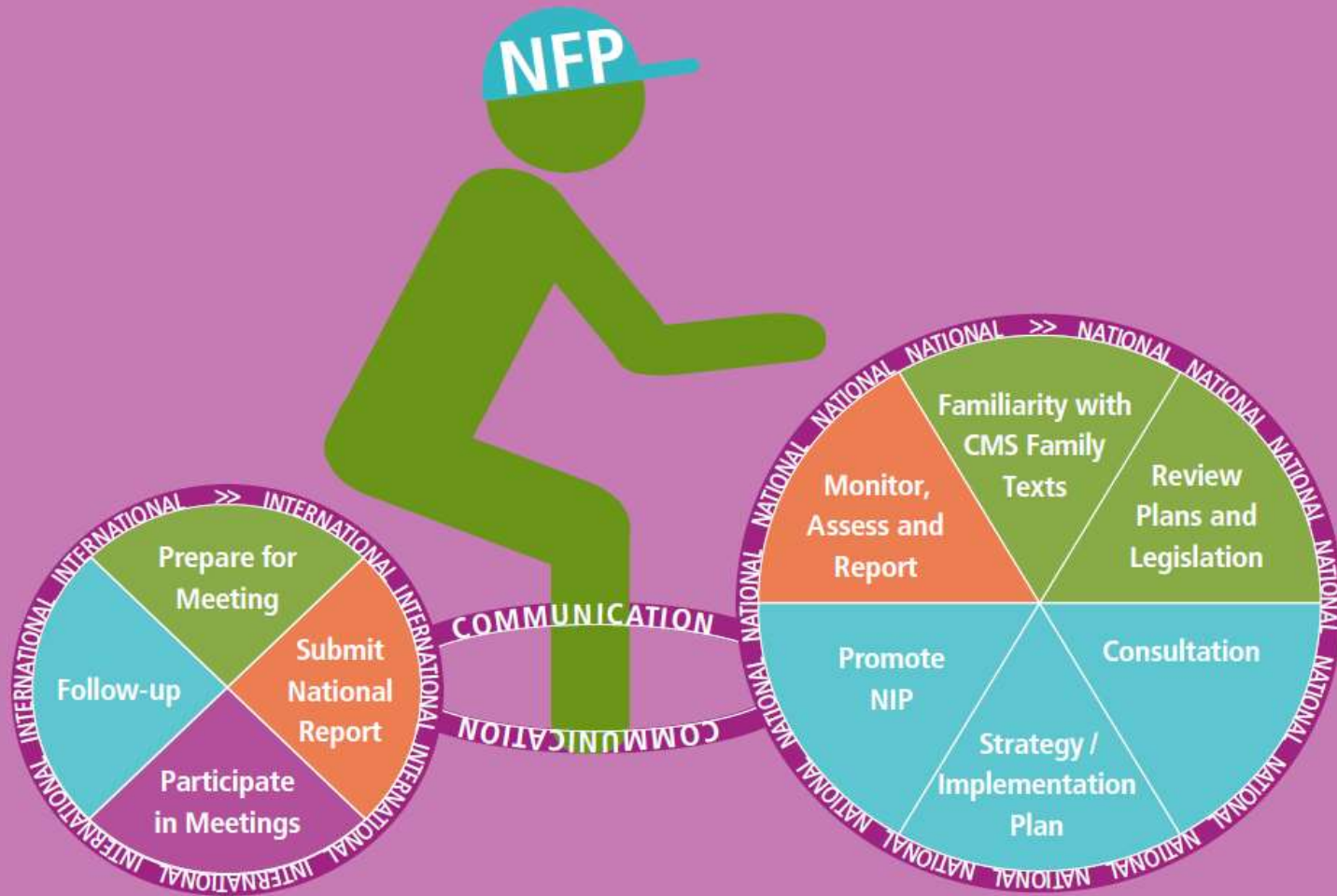


Figure 5.1 Implementation Cycle for the CMS Family Instruments

5. What are the first two steps in the cycle?





- **Step 1: Familiarize and Analyze** the text of the instrument(s) and National Reporting requirements
- **Step 2: Review** existing national legislation and identify gaps
- **Step 3: Set up** a national consultation process
- **Step 4: Develop** national strategy and/or implementation plan
- **Step 5: Promote and facilitate** the implementation of the national strategy and/or implementation plan
- **Step 6:** Find other measures to **enhance** national implementation
- **Step 7: Monitor, assess and report** the developments of national implementation



SUSTAINABLE DEVELOPMENT GOALS

2



6. What is the name of the agenda which includes the 17 SDGs?

Transforming our world: The 2030 Agenda for Sustainable Development





CMS Parties recommend to ensure renewable energy technologies are not harmful to migratory species

7. Name 3 CMS renewable energy guidelines

3

- a. Application of appropriate **Strategic Environment Assessment (SEA)** and **EIA** procedures, when planning the use of renewable energy technologies;
- b. Survey and monitoring both before and after** deployment of renewable energy technologies to identify impacts on migratory species and their habitats;
- c. Cumulative impact studies** to describe and understand impacts at larger scale, e.g., at flyways scale.

8. Which species are most at threat from large turbines?

Soaring birds



7 AFFORDABLE AND
CLEAN ENERGY



2



Snow leopards are indicators of healthy high-mountain ecosystems in Central and South Asia that provide essential ecosystem services

9. Name 4 ecosystem services they provide



- **Water services:** Storing and releasing water from the origins of river systems
- **Agro-pastoralism:** Sustaining pastoral & agricultural livelihoods of local communities
 - food, fuel, fodder, medicine
- **Climate / carbon:** Carbon sequestration & storage by the extensive grasslands
- **Biodiversity:** Snow leopards need extensive intact landscapes, supporting biodiversity
- **Recreation:** Tourism & other related economic opportunities; inspiration
- **Cultural services:** Iconic landscapes, habitats & wildlife; high cultural diversity

4



Programme of Work on Climate Change & Migratory Species

13 CLIMATE ACTION



Vulnerability Assessment

10. Who should determine which species vulnerable to climate change should be listed or uplisted on the CMS Appendices, as appropriate:

a. CMS Scientific Council

b. CMS Parties

c. International NGOs

d. Donald Trump



1





11. Name 5 key threats faced by marine species

5



- Bycatch
- Pollution
- Marine debris
- Underwater noise
- Overfishing
- Hunting (aquatic meat)
- Shipping / strike

12. How many Range States support the isolated Arabian Sea population of Humpback Whale?

10

1

*India; Iran; Iraq; Kuwait; Oman;
Pakistan; Qatar; Sri Lanka;
United Arab Emirates; Yemen*



ARABIAN SEA WHALE NETWORK

13. Approximately what proportion of humpback whales of the Arabian Sea have entanglement wounds / scars?

30-40%

1

14 LIFE
BELOW WATER



UN
environment
United Nations
Environment Programme



14. Where & what?

2



Saiga

Altyn Dala, Kazakhstan

15 LIFE
ON LAND



15. Approximately what is the maximum weight of an adult male Great Bustard?

18kg

1

16. What is the name of the zone where a male Great Bustard displays during breeding?

a lek

1





Conservation of Migratory Landbirds in the African-Eurasian Region, especially in relation to Sustainable Land Use in Africa

2

17. What key issues are Parties urged to address?

Habitat loss and degradation through the development of policies that maintain natural and semi-natural habitats within the wider environment.



18. What does CAMI stand for?

Central Asian Mammal Initiative

1

Cheetah

(Wild) Yak

Bactrian Camel

Bukhara Deer

Przewalski's Horse

Asiatic Wild Ass / Khulan

Kiang

Chinkara

Goitered / Black-tailed Gazelle

Argali (Sheep)

Chiru / Tibetan Antelope

Mongolian / white-tailed Gazelle

Tibetan Gazelle

Saiga (Antelope)

Snow Leopard



19. How many species does
CAMI currently address?
Name two.

15

3



20. Which animals appear in the logo?!

Whale shark
Spoonbill
Butterfly
Stilt
Elephant
Dugong
Manta
Turtle
Duck
Tern



10

