

# **CHEETHAH AND WILD DOGS IN SOUTH SUDAN**

**African Carnivores Initiative (ACI)**

**Entebbe, Uganda, May 1<sup>st</sup> - 4<sup>th</sup>**



**Brig. Gen. Isaac Seme Solomon**

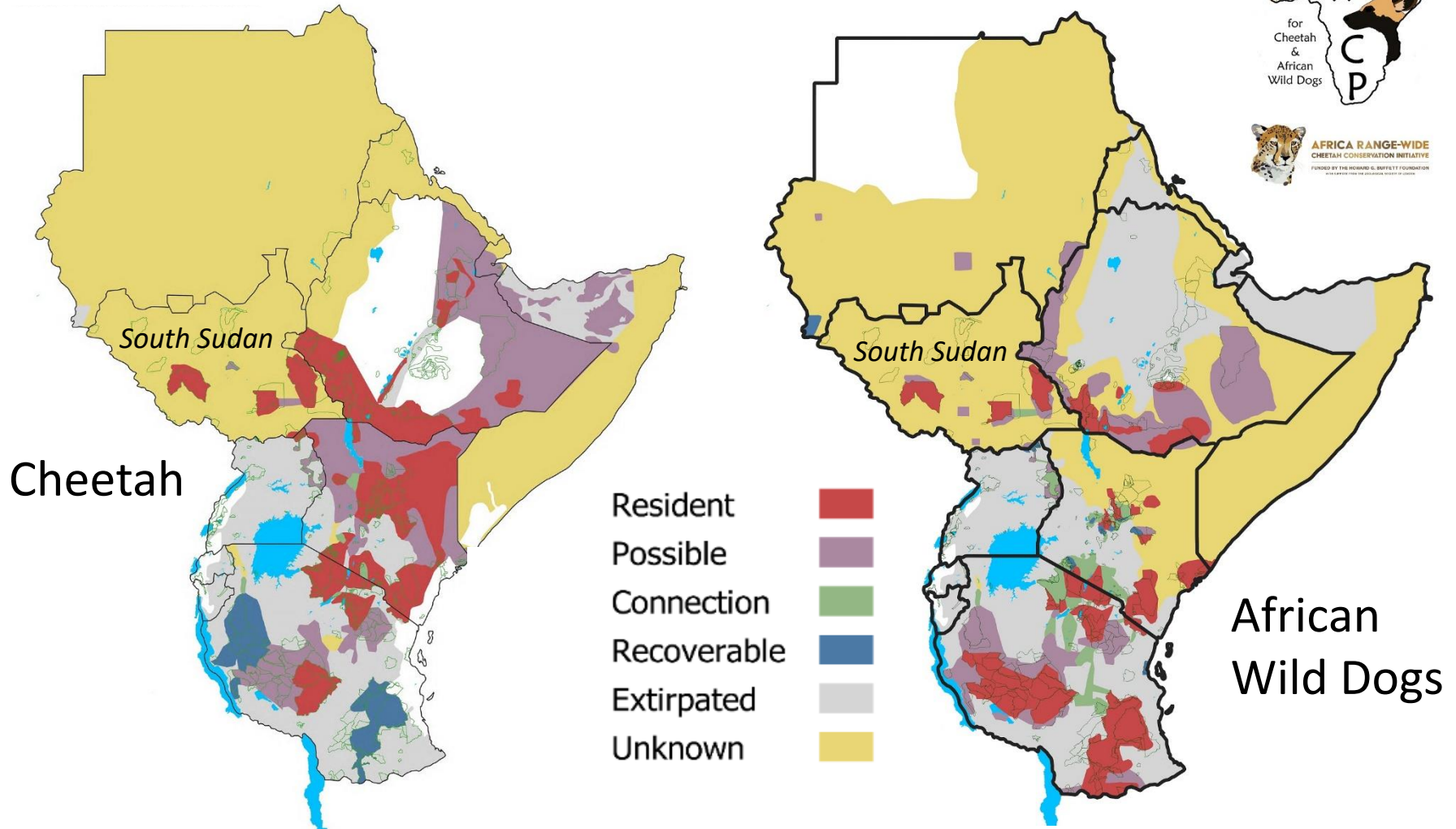
**NATIONAL CHEETAH / CARNIVORE COORDINATOR (NCC) SOUTH SUDAN**

**Ministry of Wildlife Conservation  
and Tourism (MWC&T), GOSS – Juba**

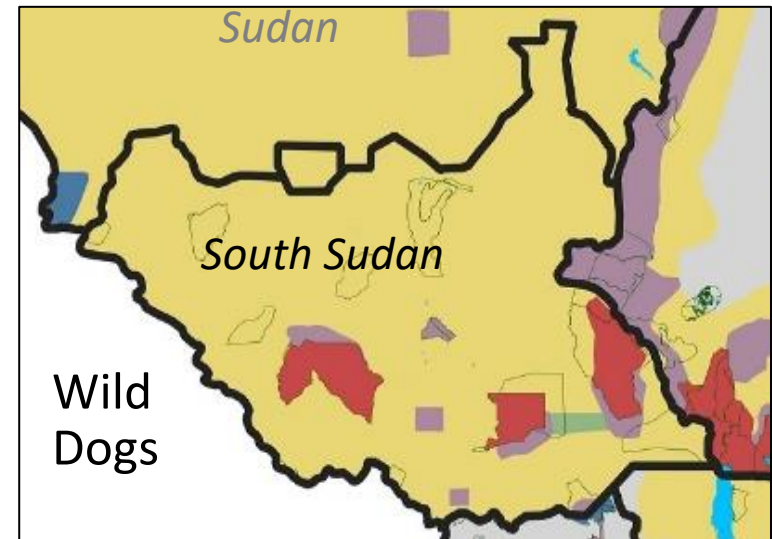
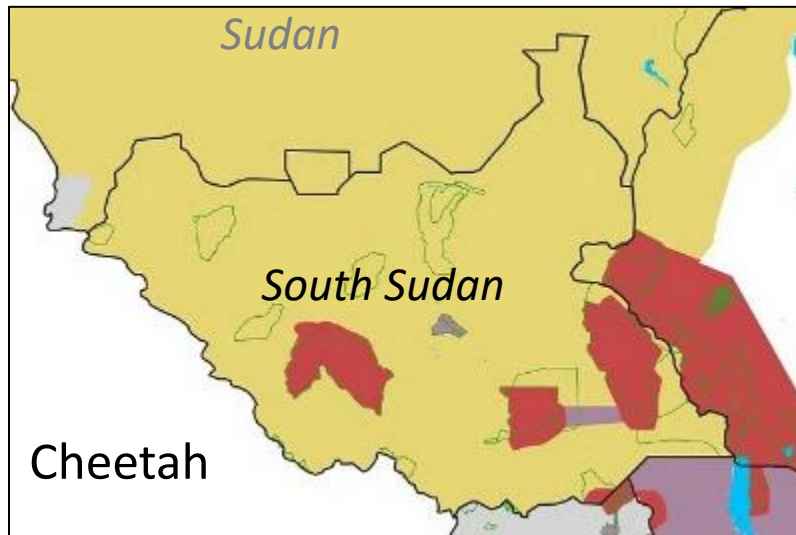


# Locating South Sudan

In common with many parts of the Horn of Africa, years of insecurity has discouraged scientific research and conservation activity → the colour yellow (i.e. 'Unknown' status) dominates the mapping.



Our knowledge is currently largely confined to the main protected areas; cheetah and wild dogs presence is unlikely to be similarly restricted.



### *Cheetah distribution (known)*

- *Boma National Park*
- *Badingilo National Park*
- *Kidopa GR*
- *Elemi region*
- *Kapoeta*
- *Pibor*

- Resident
- Possible
- Connection
- Recoverable
- Extirpated
- Unknown



### *Wild dog distribution (known)*

- *Southern National Park (SNP)*
- *Boma National Park (BNP)*
- *Lontoto National Park (LNP)*
- *Badingilo National Park (BNP)*
- *Kidopo GR*
- *Kaji Keji*
- *Terikika*



**Insecurity has presented huge challenges** to the implementation of conservation actions in South Sudan

With so little known, the country's primary task is now **survey**

→ **Lafon & Badingilo National Park Questionnaire Survey**  
for large carnivore presence & human-carnivore conflict (2020-21)



**ZSL**  
LET'S WORK  
FOR WILDLIFE



AFRICA RANGE-WIDE  
CHEETAH CONSERVATION INITIATIVE  
FUNDED BY THE HOWARD G. BRUFFETT FOUNDATION

**Objective of study - to gauge:**

1. Presence / absence of carnivore species, and
2. Levels of reported conflict

**Results** show regular presence of **lion, leopard, cheetah, wild dogs, hyena**, and all are revealed as regular conflict species.



# ***'Cheetah in the Horn of Africa' Project (USFWS-funded)***

**Initiated in 2023** - collaboration of:

- + South Sudan's MWC&T
- + ZSL's Cheetah Conservation Initiative (CCI)
- + Colorado State University (CSU)

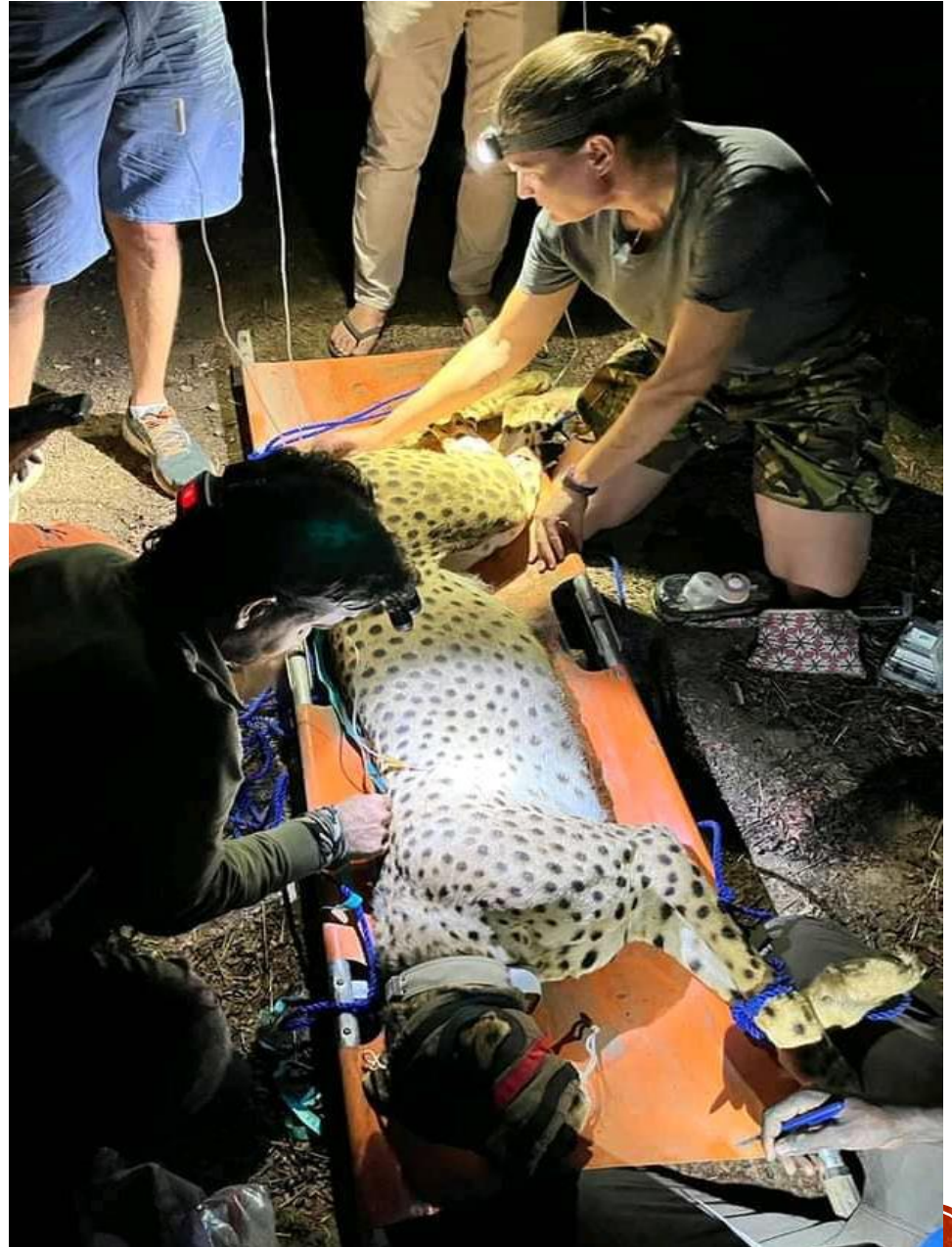
**Project Aim:**  
to build capacity for  
cheetah survey and  
monitoring in  
governments across the  
region.









**African Parks (AP)** recently signed MoU with Ministry of Wildlife Conservation and Tourism (MWC&T) - to manage Badingilo and Boma NPs.

AP currently collaring many species for the first time – including cheetah in recent weeks.

*Cheetah being collared by AP*



# PROGRESS against Regional Strategy – self evaluation

THEME	OBJECTIVE	ACTIVITIES CONDUCTED	ORGANISATIONS	PROGRESS – self evaluation
<b>Coexistence</b>	Implement strategies to promote coexistence of cheetahs and wild dogs.	<i>(only questionnaire surveys including human-carnivore conflict)</i>	<i>(MWC&amp;T with ZSL's CCI)</i>	
<b>Surveys and information</b>	Provide stakeholders with scientific information on status and threats to cheetah / wild dog pops	<ul style="list-style-type: none"> <li>• Questionnaire surveys around Badingilo N and Lafon 2020 &amp; 2021</li> <li>• Aerial survey, Year 2000s</li> <li>• Aerial survey &amp; collaring 2023</li> </ul>	MWC&T with ZSL's CCI; Wildlife Cons Society (WCS); AP	
<b>Capacity Development</b>	Strengthen human, institutional and information resources for cheetah and wild dogs	<ul style="list-style-type: none"> <li>• NCC capacity building annual training and support (cheetah / wild dog ecology, GIS, etc)</li> <li>• <i>(Awareness plans of NCC)</i></li> </ul>	ZSL's CCI  <i>(MWC&amp;T with ZSL's CCI)</i>	
<b>Policy and legislation</b>	Review and harmonise and, develop new legislation, in cheetah and wild dog range	<i>(no work done)</i>		
<b>Advocacy</b>	Mainstream Cheetah & Wild Dog conservation in land use planning & its implementation	<i>(will feed into discussions with AP regarding wide-ranging, i.e. connected landscape needs of cheetah and wild dogs)</i>	<i>(MWC&amp;T with ZSL's CCI)</i>	
<b>National plan and regional strategy</b>	Develop, update, and implement regional and national conservation progs for cheetah / wild dogs	<ul style="list-style-type: none"> <li>• National Action Plan for cheetah and wild dogs adopted 2010</li> <li>• National Cheetah / Carnivore Coordinator (NCC) appointed 2019</li> </ul>	MWC&T  MWC&T	

## CHALLENGES

- Most National Parks are in remote areas of the country – lack of transport or mobility to the National Parks is a major issue
- Lack of funds to implement cheetah and wild dog action plans
- Lack of field equipment (e.g. vehicles, camera traps) for full surveys.

## IN SUMMARY

- South Sudan has until now had little opportunity to implement its National Conservation Action Plan for Cheetah and African Wild Dogs
- **However**, opportunity is now very much present for this country's carnivores with partnerships with ZSL's CCI, USFWS, and AP.





First photos of wild dogs in South Sudan  
Southern National Park  
*(Fauna and Flora  
International, FFI)*



*Thank You !*



4.



1.



3.



2.

