

# 2<sup>nd</sup> Meeting of Range States for the Joint CITES-CMS African Carnivore Initiative (ACI2)

Entebbe, Uganda, 01 – 04 May 2023



*Roseline Mandisodza-Chikerema*  
*Chief Ecologist Terrestrial – Zimbabwe*

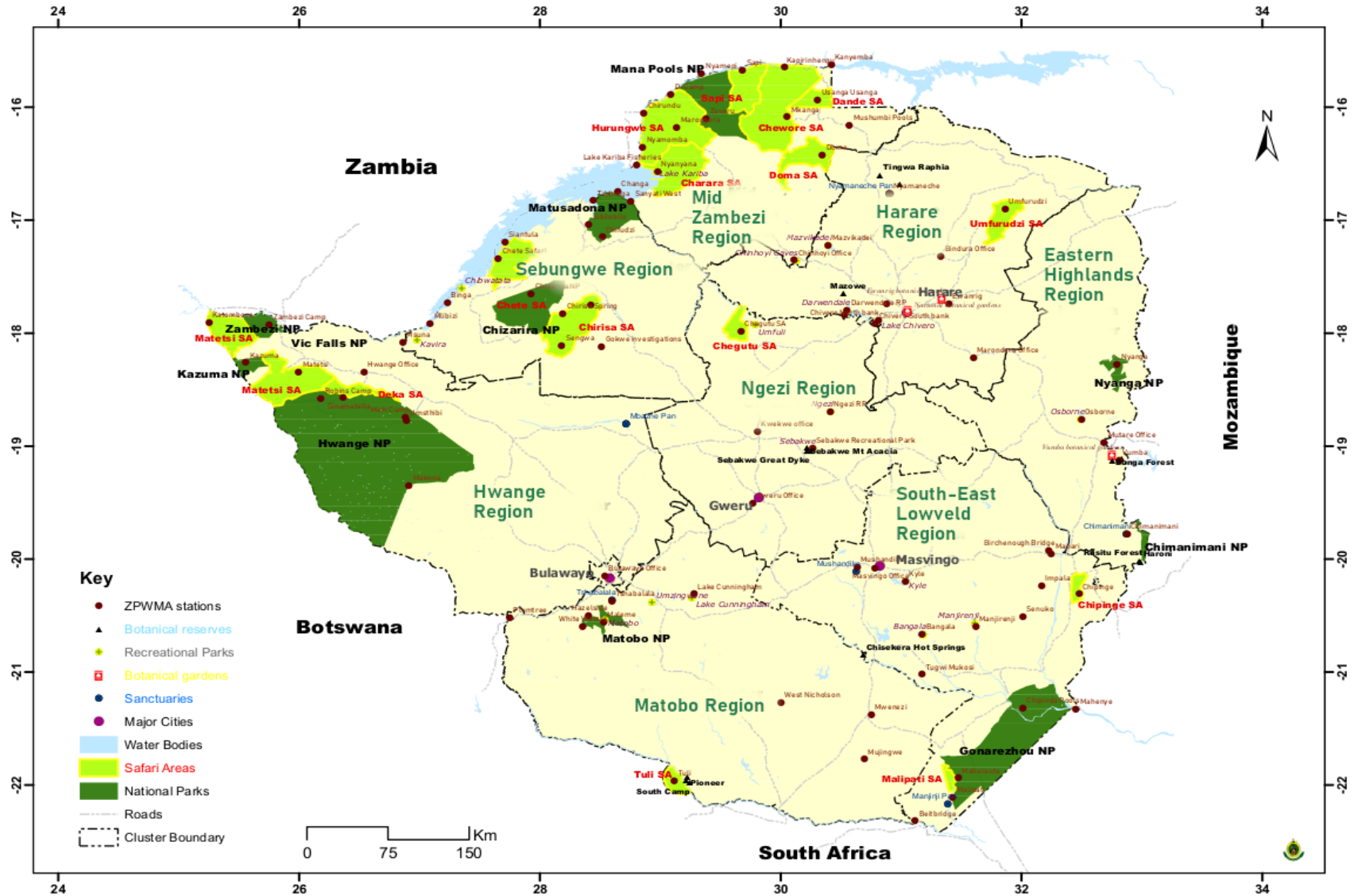


# Presentation outline

- Wildlife areas in Zimbabwe
- Cheetah and wild dog management plan
- Cheetah range
- Wild dog
- Objectives of the management plan
- Knowledge and Information
- Information transfer
- Collaboration
- Challenges
- Planned future work



# Wildlife Areas in Zimbabwe



# Cheetah and African Wild Dog Management Plan

- Zimbabwe has a cheetah and wild dog plan that was approved for implementation in 2018 after a workshop that was held in April 2018
- Several activities have been done, however there are outstanding and ongoing key activities that are yet to be done
- Discussions are ongoing on the possibility of reviewing and updating the management plan

## *National Conservation Action Plan for Cheetah and African Wild Dog in Zimbabwe*

2018 to 2022

Search documents and files



**Suggested citation:** Zimbabwe Parks and Wildlife Management Authority (2018), *National Conservation Action Plan for Cheetah and African Wild Dog in Zimbabwe*



**ZIMBABWE PARKS AND WILDLIFE  
MANAGEMENT AUTHORITY**

With support from:

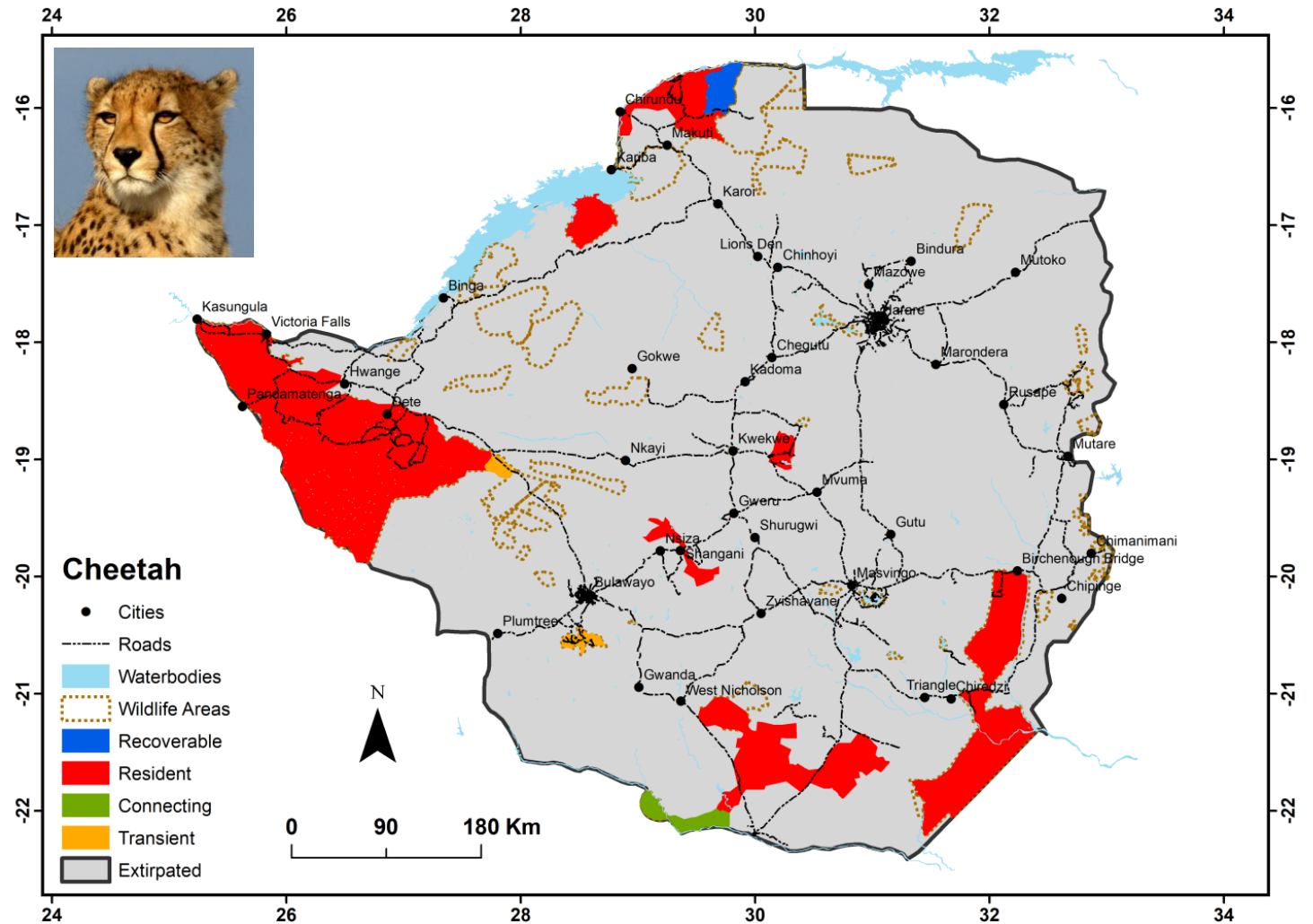


THE HOWARD G.  
**BUFFETT**  
FOUNDATION



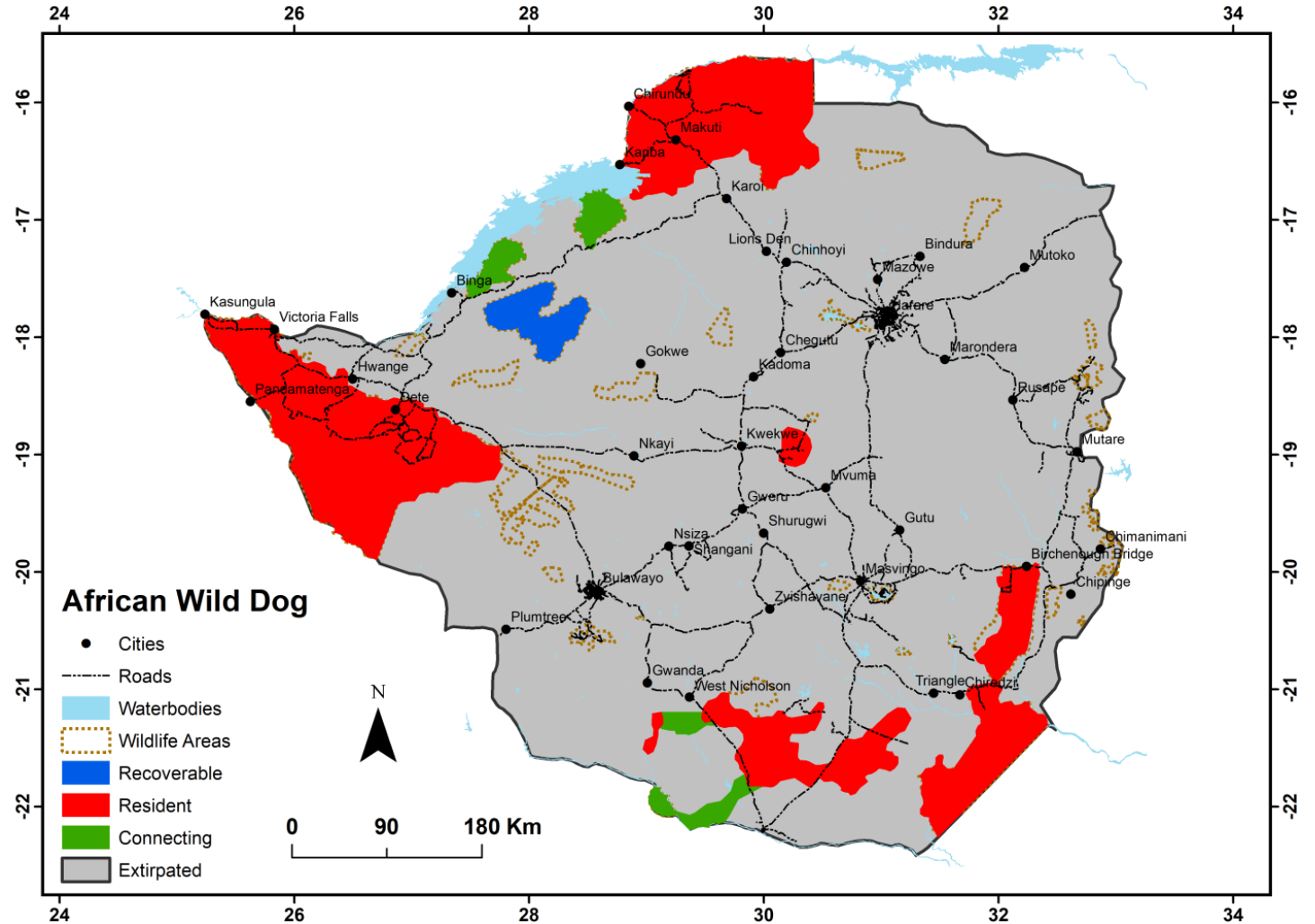
# Cheetah range

- Cheetah is a specially protected species in Zimbabwe
- For the past 5 years there is no sport hunting of the species
- Less than 3 animals have been hunted during hunting years



# Wild dog range

- African wild dog is a specially protected species in Zimbabwe
- No sport hunting is done of the species
- A key species in photographic safaris



# Objectives of the management plan

1. To **develop capacity** in all aspects of cheetah and wild dog conservation in Zimbabwe (*Capacity Development*)
2. To **improve knowledge and generate information** for the conservation of cheetah and wild dogs across Zimbabwe. (*Knowledge and information*)
3. To increase active commitment of stakeholders and awareness of the wider public by **transferring information** relevant to cheetah and wild dog conservation (*Information transfer*)
4. To **promote coexistence** of people with cheetah and wild dogs in Zimbabwe (*Coexistence*)
5. To **promote best land use practice** for cheetah and wild dog conservation and minimise adverse effects of land development (*Land use*)
6. To achieve **increased political commitment** to the conservation of cheetah and wild dogs in Zimbabwe (*Political commitment*)
7. To review and where necessary **revise and strengthen international, national and local legislation, policies and protocols** affecting cheetah and wild dog conservation and lobby for improved compliance to existing legislation (*Policy and legislation*)
8. To maintain and efficiently **implement an up-to-date National Conservation Action Plan** for Cheetah and Wild dogs in Zimbabwe (*National Planning*)

# Knowledge and information

---

- There are several ongoing projects in implementing the cheetah and wild dog knowledge gap. Some of the projects in the key wildlife areas;

Protected Area	Activity
All Parks Estate	Cheetah and wild dog sightings recording by all field staff under the key species programme
Hwange National Park	Wild dog research and monitoring Cheetah research and monitoring
Mana Pools National Park	Wild dog research and monitoring
Matetsi Safari Area and Zambezi National Park	Wild dog research and monitoring including measures to reduce road kills and anti-snaring collaring
Save Valley Conservancy	Wild dog research and monitoring Education and awareness schools project
Some Parks Estate e.g Gonarezhou, Mana Pools, Chewore, Charara,	Camera trap, call up and spoor surveys



# Information transfer



ZIMBABWE PARKS AND WILDLIFE MANAGEMENT AUTHORITY

ZIMBABWE

Parks and Wildlife Management Authority

INFORMATION BOOKLET ON CHEETAH AND AFRICAN WILD DOGS  
ZIMBABWE, 2022



Zimbabwe Parks and Wildlife Management Authority  
Range Wide Conservation Program for Cheetah and African Wild Dogs

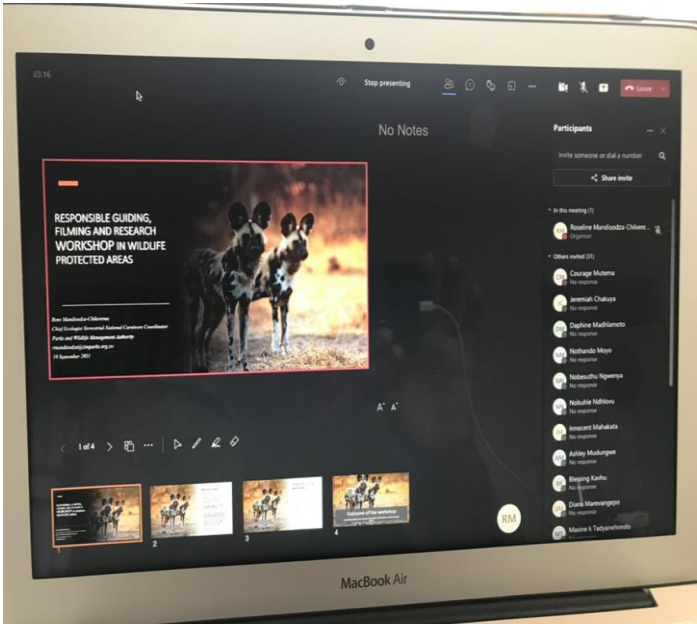


ZIMBABWE PARKS AND WILDLIFE MANAGEMENT AUTHORITY



AFRICA RANGE-WIDE CHEETAH CONSERVATION INITIATIVE

FOUNDED BY THE HOWARD G. BUFFETT FOUNDATION  
WITH SUPPORT FROM THE ZOOLOGICAL SOCIETY OF LONDON



# Information transfer

---

- We have ongoing educational programmes in schools and communities
- Workshops have been done to train people (i.e., local communities, safari guides, national park rangers, tour operators and tourists) in data collection.
- A cheetah sightings hotline, Facebook page and a WhatsApp platform to ensure active communication between ourselves and the general public was established through one of our partners.
- Over 1,200 posters and sighting sheets have been flighted in national parks estates, lodges and safari operator's to encourage the general public to submit cheetah sightings and photographs.

# Collaboration-Policy and Implementation

---

Collaborative work in cheetah and wild dog conservation is being done at local, national, regional level through working with partners such as AWCF, WildCRU, PDC, PDT, CCP, PANTHERA and RWCP

---

Work is also being done at transboundary level through the TFCA initiatives e.g., KAZA as seen in the presentation and GLTP

---

Zimbabwe is implementing regional and national multilateral environment agreements and participates in all meetings and workshops

---

Zimbabwe is working with local and regional partners on a cheetah reintroduction programme, two areas have been identified so far and feasibility assessments are ongoing

# Planned future work

- In future, we strive to continue to work engage local communities to enhance cheetah and wild dog co-existence to reduce conflict
- Engage local government department to promote wildlife friendly land use planning and enforce penalties for wildlife kills (signage)
- From June 2024 we are starting an intensive cheetah sighting and questionnaire survey project to establish the current cheetah population to update our current database
- Explore migratory corridors cheetahs use to advise in land use planning. There is evidence of a cheetah travelling over 300 km from Hwange NP to the Zambezi Valley
- Raise awareness in school children and engage other local communities in creating cheetah and wild dog friendly environments.
- We wish to collar at least 6 individual animals to assess extent of conflict with humans and home range use considering the increases sightings of cheetahs in National Parks.
- Enhanced and transparent collaboration with partners – implementation of research and monitoring results for the good of wildlife



# Challenges

---

- Habitat loss and fragmentation
- Poor land use planning
- Snaring and road kills especially on public roads that pass through PAs
- Tourism and filming pressure e.g., Mana Pools National Park
- Lack of current national population estimates for cheetahs, last national survey done between 2012-2014
- Lack of funding for research and monitoring in some key populations
- Transparency and trust challenges among external research and safari operators and the government
- Connectivity challenge in some areas
- Conflict with local communities

*Thank you for listening*

---

