



FIRST REGIONAL CAPACITY BUILDING WORKSHOP FOR CMS NON-PARTIES OF SOUTH AND SOUTH-EAST ASIA

Quezon City, THE PHILIPPINES

27-29 October 2015

Agenda and Objectives



Francisco Rilla

Capacity Building Officer, UNEP/CMS

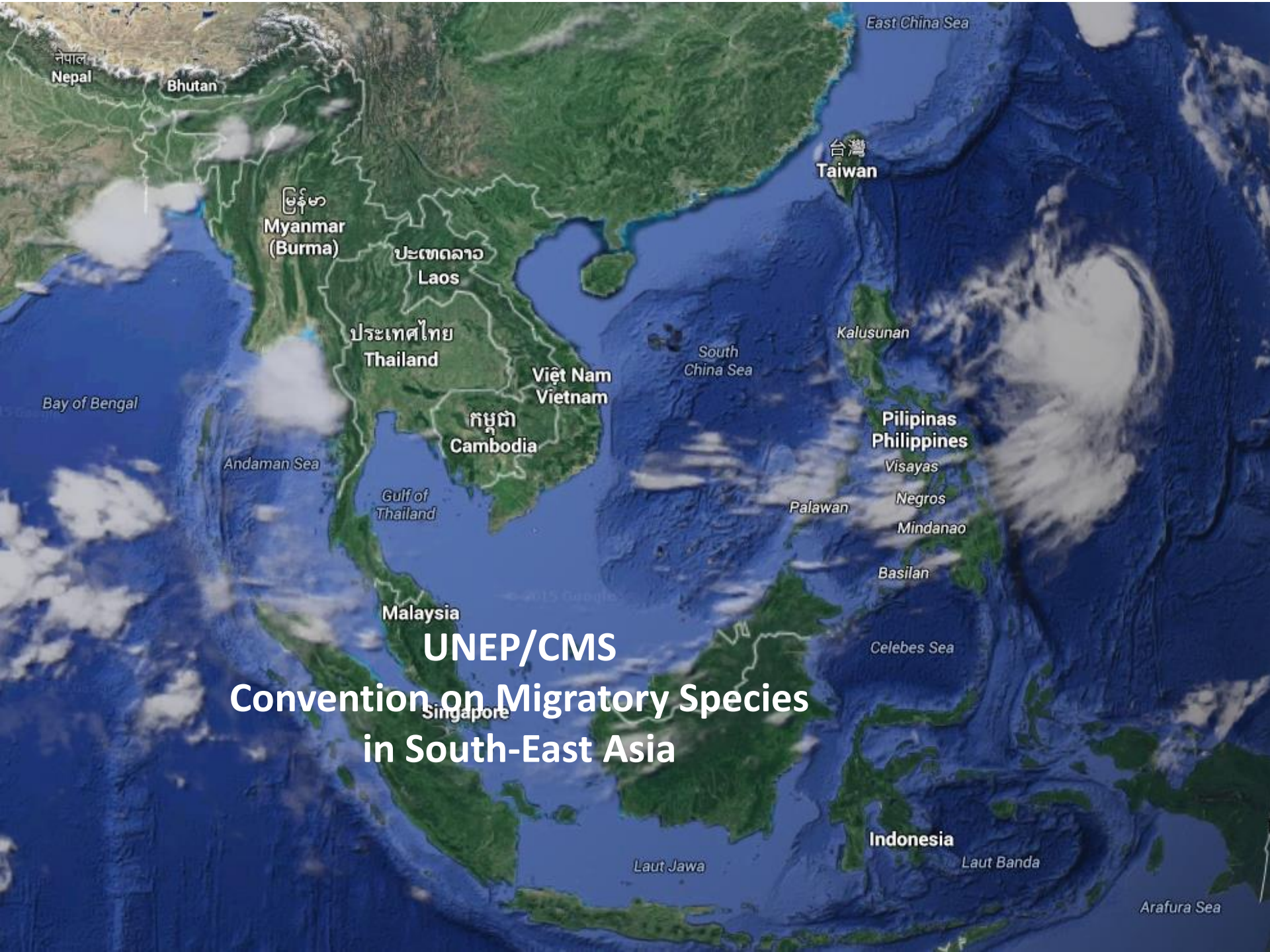




General Objectives of the Workshop

- Enhance the presence of CMS in the SE Asia region
- Promote discussions between governments to ensure the integrity of animal migration along migration routes in the national political agenda
- Support the process of accession to CMS and its agreements in SE Asia
- Informing, sensitizing and training to countries that are not yet members of CMS and they wish to join the Convention.
- Facilitate communication and build synergies between States and CMS
- Facilitate the development of NBSAPs and compliance with the Aichi Targets

- Strengthen training to include a Migratory Species Conservation National Strategies (NBSAPs)
- Provide information to develop National Strategy decisions
- Knowing where to find assistance for the Conservation and Use of Natural Resources
- Have a strategic vision of how to develop a national roadmap
- Conservation of Migratory Species
- Identification of opportunities for cooperation
- Better understanding of support and finance
- experiences and challenges of each country in the region



नेपाल
Nepal

Bhutan

မြန်မာ
Myanmar
(Burma)

ປະເທດລາວ
Laos

ประเทศไทย
Thailand

Việt Nam
Vietnam

កម្ពុជា
Cambodia

Gulf of Thailand

Malaysia

Singapore

台灣
Taiwan

Kalusunan

Pilipinas
Philippines

Visayas

Negros

Mindanao

Basilan

Palawan

Celebes Sea

Indonesia

Laut Jawa

Laut Banda

East China Sea

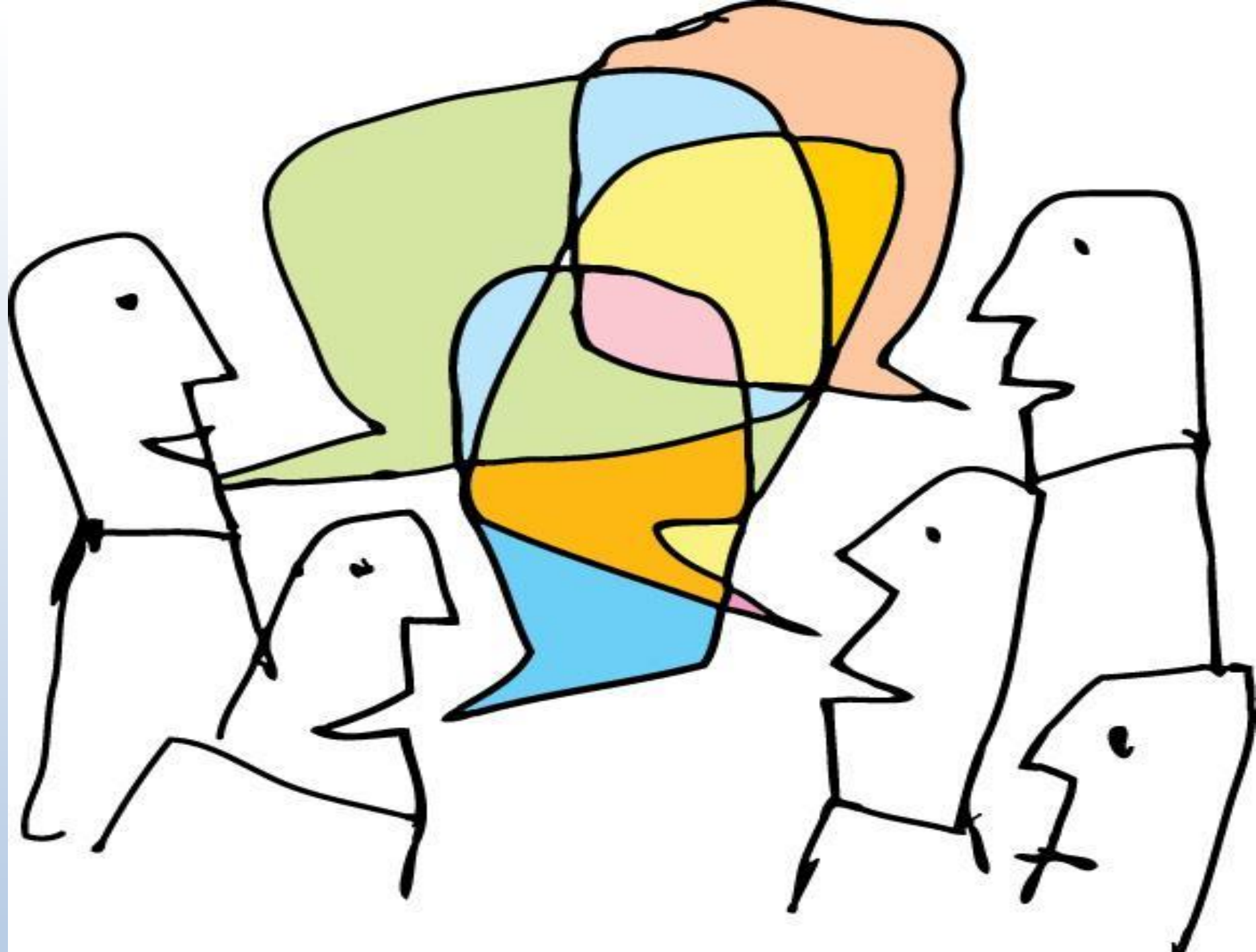
South China Sea

Bay of Bengal

Andaman Sea

Arafura Sea

**UNEP/CMS
Convention on Migratory Species
in South-East Asia**





REGIONAL-CAPACITY-BUILDING-WORKSHOP-for-CMS-NON-PARTIES-of-SOUTH-EAST-ASIA
CMS-as-a-Tool-for-Conservation-of-Biodiversity

Brentwood-Suites-Hotel, Quezon-City & the Plaza-Hotel, Balanga-City, Philippines
27th - 29th October 2015

DRAFT-AGENDA

Date	Morning	Afternoon	Evening		
Monday-26 th October	Arrival-of-participants. Workshop-planning-meetings (trainers, facilitators, logistics, CMS-Secretariat).				
Tuesday-27 th October	Opening-session: <ul style="list-style-type: none"> Registration Welcome & official opening Participant introductions & expectations Agenda overview & CMS-family manual Why countries are not (yet) CMS parties (PL-Q&A/D) 	CMS-background-&-rationale: <ul style="list-style-type: none"> What is migration? (PL-IL) Draw a flyway / migratory route (GW) Rationale for protecting migratory species (PL-IL) 	CMS-background-&-rationale: <ul style="list-style-type: none"> The roles of CMS and UNEP at global & regional level (PL-IL) CMS-Instruments and other initiatives in the region (PL-L & MoU / other initiative market) Benefits to accede CMS & its instruments (PL-IL, Q&A/D) 	Migratory-species-conservation-in-South-East-Asia: <ul style="list-style-type: none"> Transboundary conservation of sea turtles (PL-IL) Review of migratory species issues in the region (PL-D) 	
Wednesday-28 th October	Field-visit-to-Balanga-Wetland-&-Nature-Park: <ul style="list-style-type: none"> Guided visit to the park, an important site for migratory birds 	At-Las-Casas-Filipinas-de-Acuzar: Roles-&-responsibilities-of-NFPs-&-administrative-issues <ul style="list-style-type: none"> Migratory-bird-conservation (PL-L) Migration-challenge (PL-EX) Appointment of NFPs, their roles & responsibilities (PL-D & Philippines-CS) Practicalities / meetings (Q&A-D) 	At-Las-Casas-Filipinas-de-Acuzar: <ul style="list-style-type: none"> Tour of Las-Casas-Filipinas-de-Acuzar 	Shark-Side-Event-&-Cocktail: hosted by the PEW Charitable Trust & CCEF. Shark / marine-wildlife-management	
Thursday-29 th October	Visit-to-Balanga-City-Government-Office: <ul style="list-style-type: none"> Discussion with local government: implementation of migratory species conservation initiatives 	Implementation: <ul style="list-style-type: none"> Implementation cycle, and integration of migratory species into NBSAPs (IL) What does implementation involve? Case study from Philippines (IL) Aspects of implementation, roles of government & NGOs (GW) 	CMS-Accession-Process-&-Exercise: <ul style="list-style-type: none"> The accession process (PL-L) Obligations: annual contribution & reporting (PL-L) Accession cost/benefit studies: taking steps towards joining CMS (PL-L & EX) 	Accession-Exercise: <ul style="list-style-type: none"> Accession-Challenge-exercise, followed by feedback and discussion (GW & PL-EX) Road maps to accession (PL-D) 	Close: Workshop conclusions, evaluation & close

Approx. times: → 27th & 29th: Morning sessions 08:30-12:30; afternoon sessions 13:45-17:00. Lunch 12:30-13:45. Coffee & tea breaks provided.

28th: Field trip: 05:30-09:00; Balanga office 09:00-10:00; at Las-Casas Filipinas de Acuzar: 10:30-15:30, morning snack and lunch provided. Evening cocktail at 19:00.

Abbreviations: → PL: Plenary; IL: Interactive Lecture; GW: Group Work; EX: Exercise; D: Discussion; CS: Case Study; RP: Role Play; B: Brainstorming

Colours: → These represent chapters and their respective colours in the CMS Family Manual

Outcomes

- Knowing and appreciating the work you do for CMS
- Propose accession to CMS in countries that are not yet Party
- Create a roadmap and strategic vision
- Prepare a list of opportunities for cooperation
- Identify elements for the workshop report

Why your country has not ratified yet

- **CBD covers all**
- **Not very aware**
- **Unaware benefits**
- Only few migratory species
- Already signed CMS agreements
- Annual contribution too costly
- Reporting requirements too much

Obstacles

- Info not available
- Lack of awareness
- **Internal process takes time**
- Not easy to justify if benefits unclear
- CBD bigger coverage, avoid duplication
- Existing means are sufficient

THANK YOU VERY MUCH FOR YOUR ATTENTION