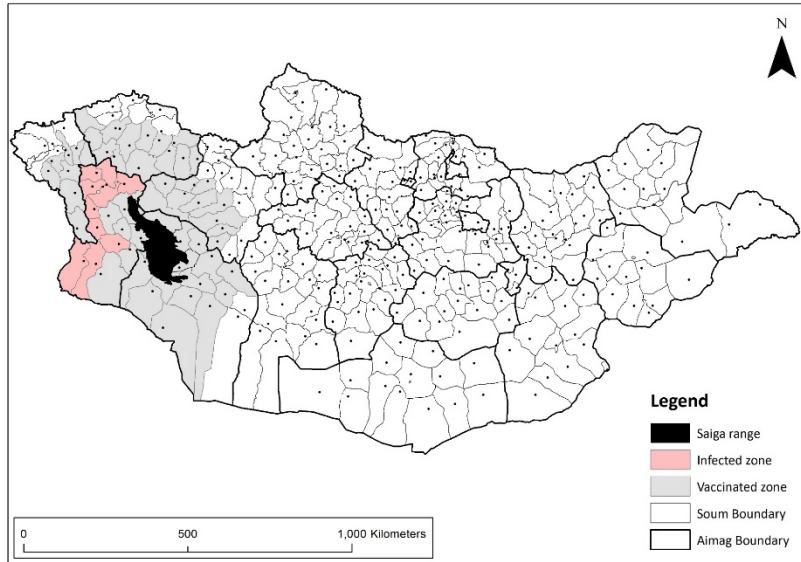


PPR outbreak response in wildlife in Mongolia

Wildlife Conservation Society – Mongolia Program
Enkhtuvshin Shiilegdamba,
DVM, MPVM



PPR outbreak sites in livestock and wildlife



PPR outbreak summary in wildlife species in Mongolia

- August 2016: First clinical case of PPR observed in livestock
- September 2016: PPR confirmed by reference laboratory in goat and sheep
- December 22, 2016: First saiga antelope death reported by livestock herders to local authorities.



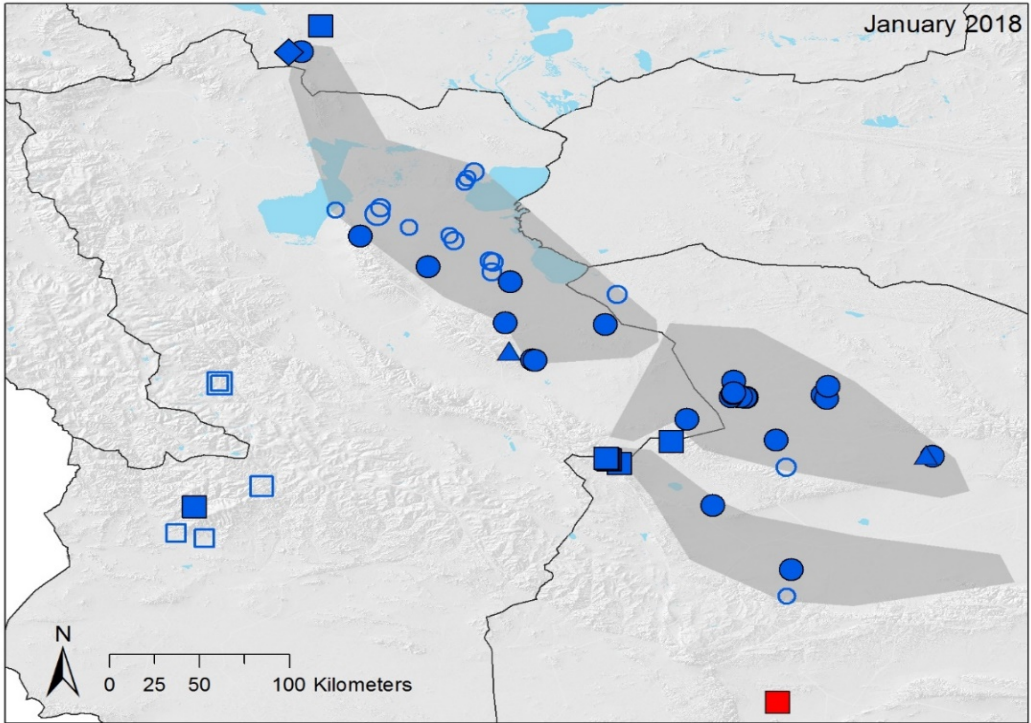
PPR outbreak in wildlife species in Mongolia

January 2018

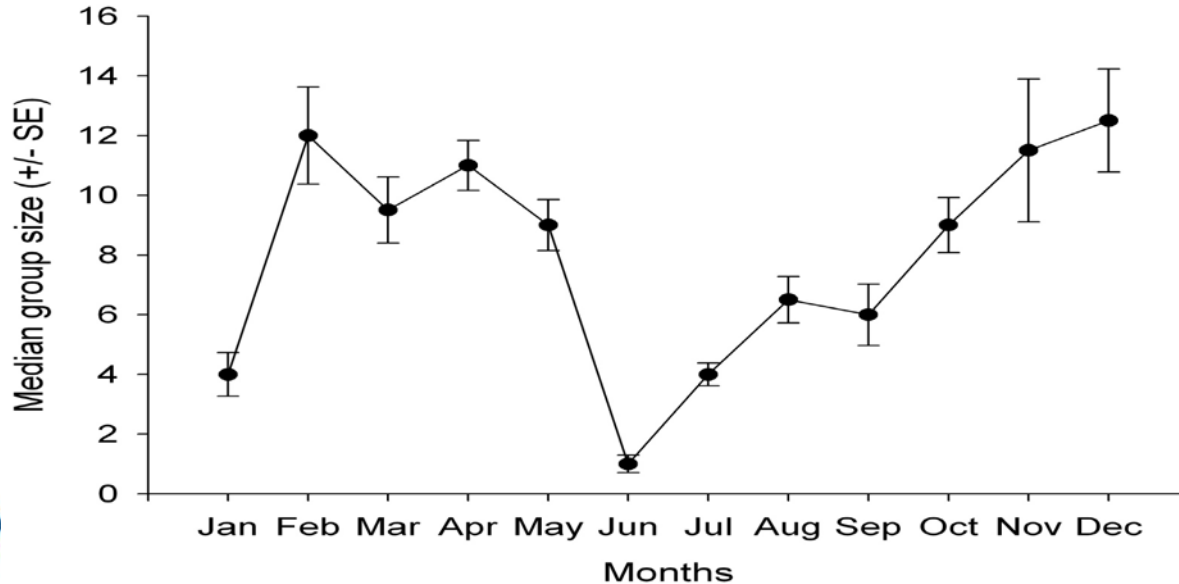
Legend

- Cases:
- Confirmed ● Incident
 - Confirmed ● Past
 - Unconfirmed ○ Incident
 - Unconfirmed ○ Past

- Species:
- Saiga
 - Ibex
 - △ Goitered gazelle
 - ◇ Argali sheep
 - Saiga home range



Saiga grouping pattern during PPR outbreak



PPR confirmed wildlife species



Mongolian saiga
Jan 2, 2017



Goitered gazelle
Jan 29, 2017



Siberian ibex
Jan 29, 2017



Argali Sheep
Mar 10, 2017





Food and Agriculture Organization
of the United Nations



WORLD ORGANISATION FOR ANIMAL HEALTH
Protecting animals, preserving our future



Food and Agriculture Organization
of the United Nations



Morris Animal
FOUNDATION



SAIGA CONSERVATION ALLIANCE