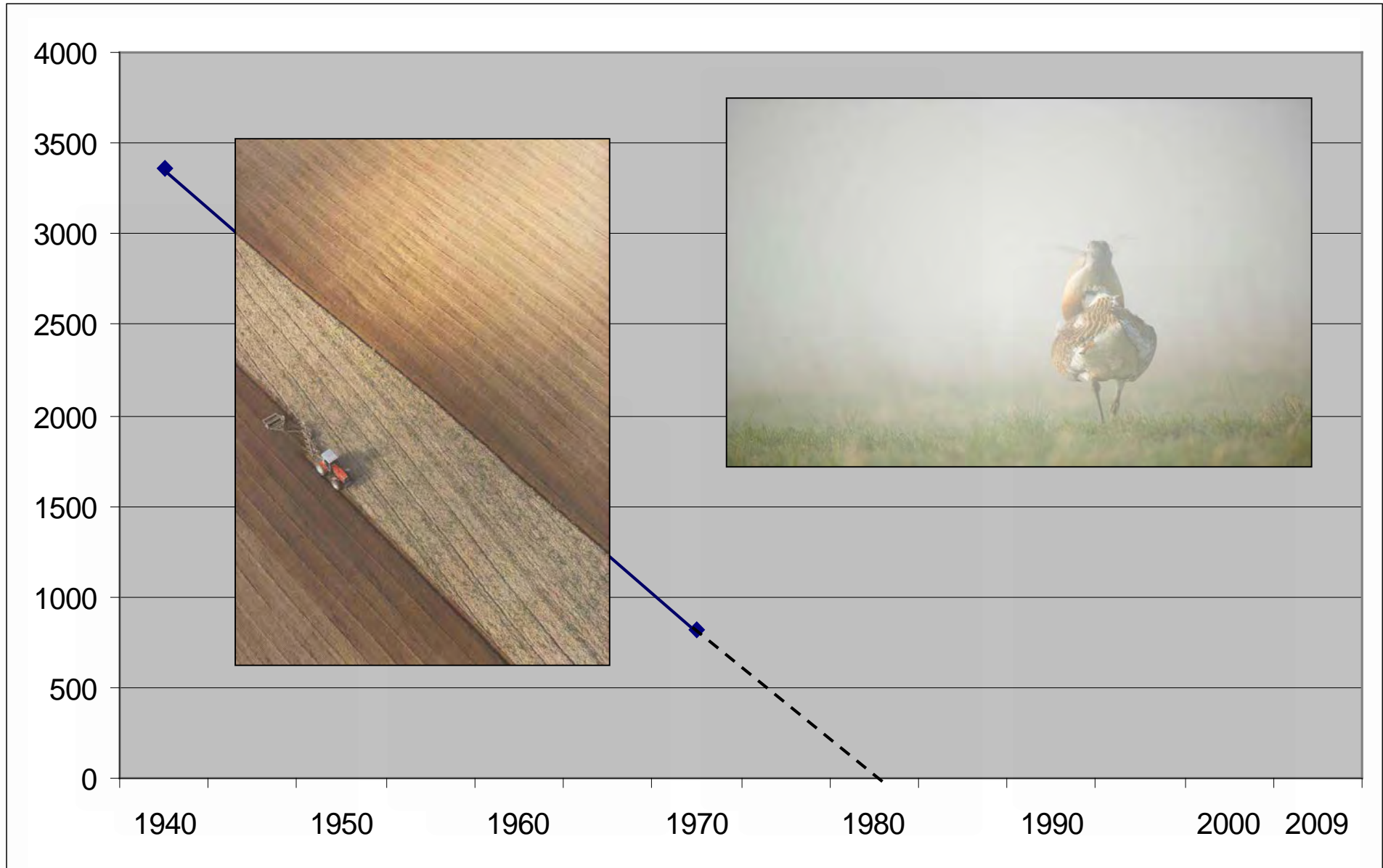




Torsten Langgemach  
Henrik Watzke  
Marcus Borchert

# The German Great Bustard conservation programme – an update

# Population trend in Germany





# Conservation programme since 1979

1. Habitat management
2. Reduction of disturbances
3. Predation management
4. Reinforcement



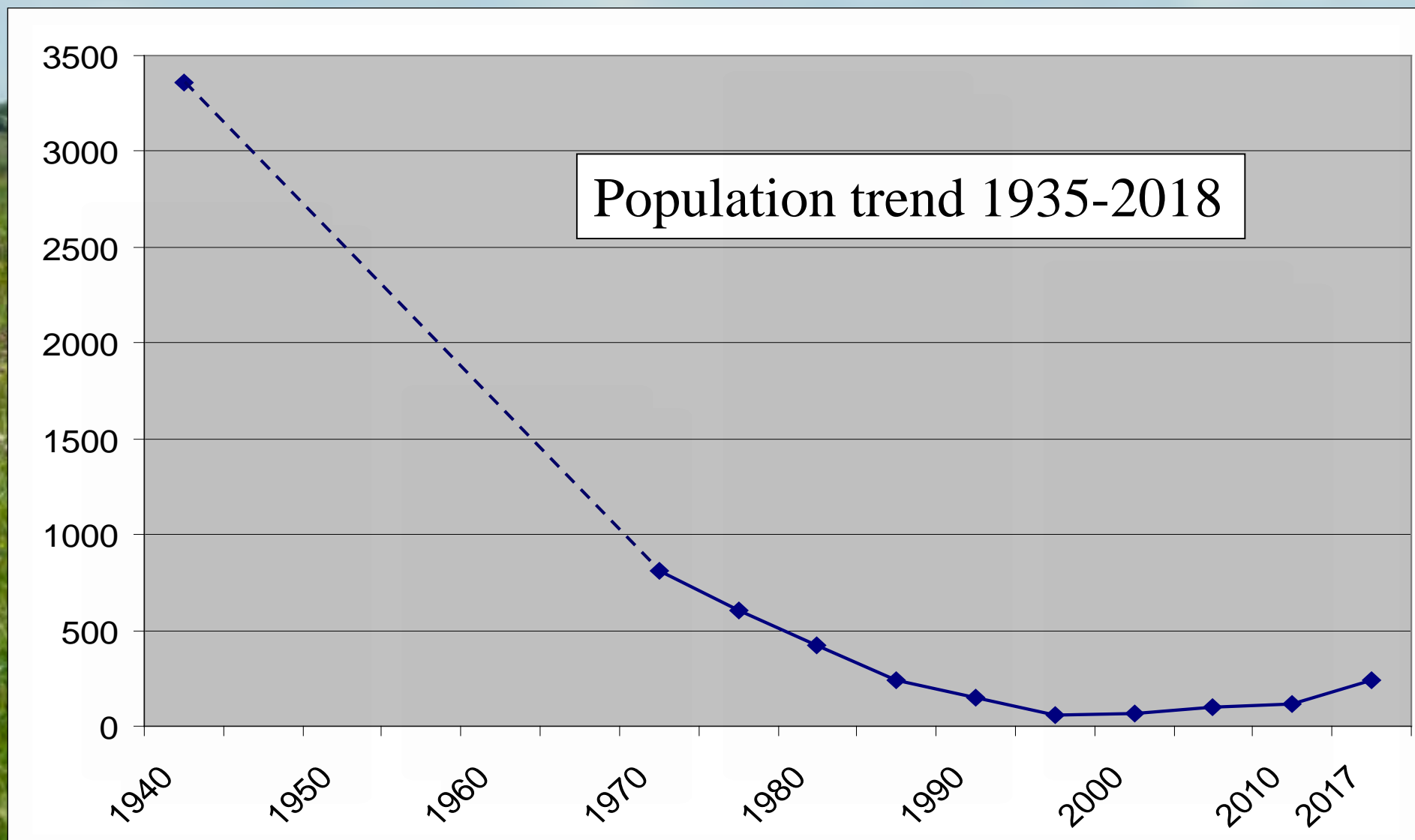
**What have we achieved?**



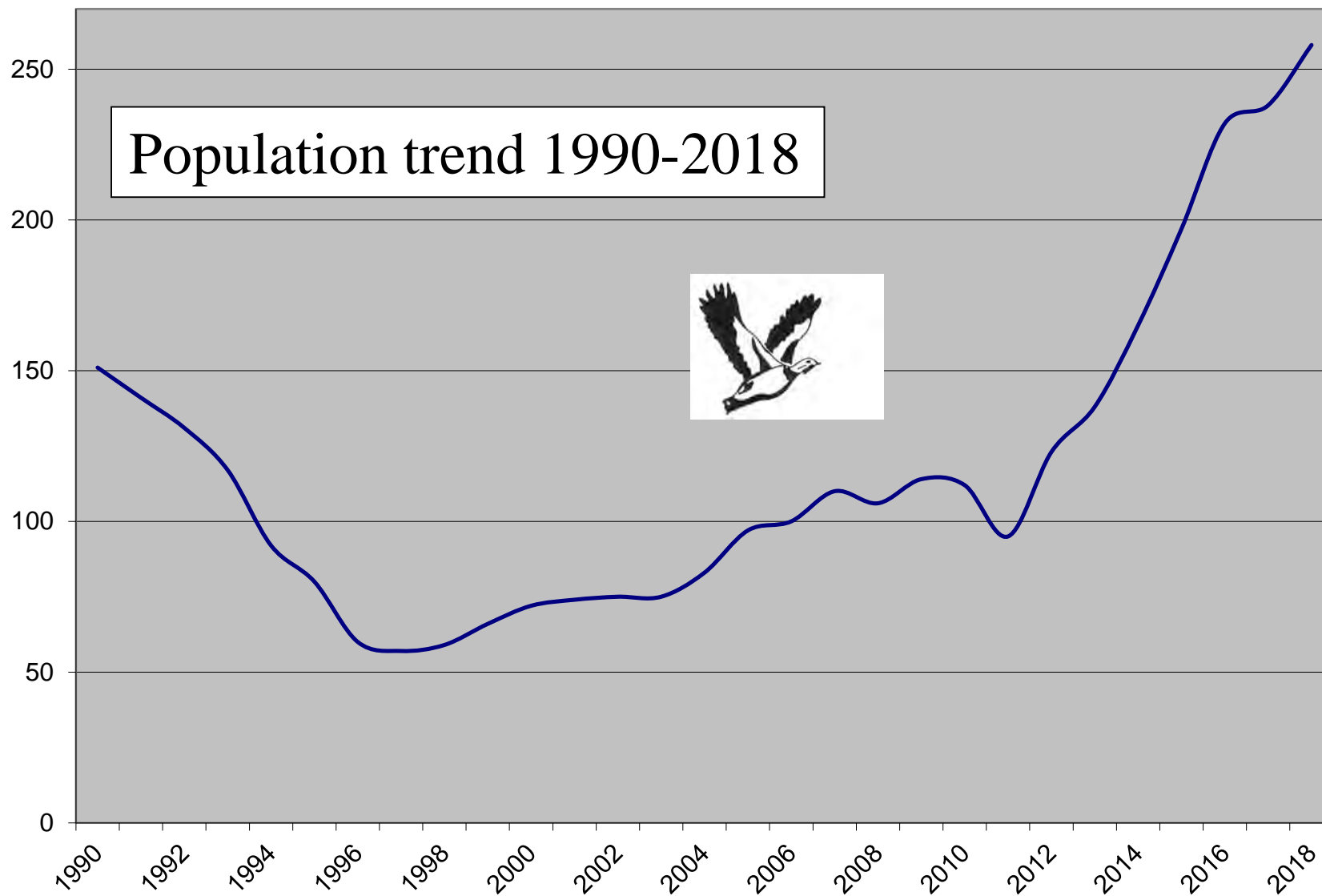


We are still here!!!

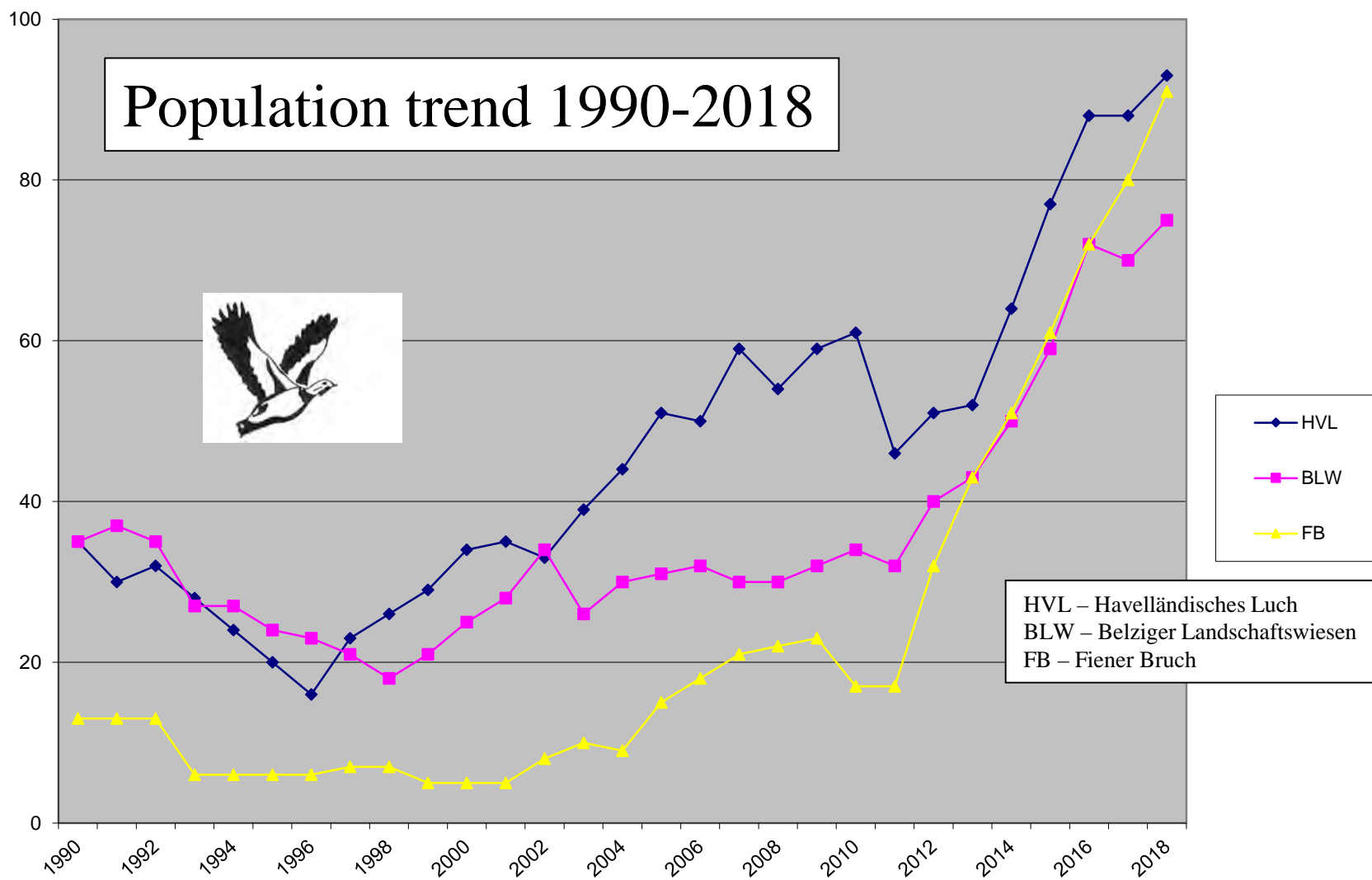




## Population trend 1990-2018



## Population trend 1990-2018

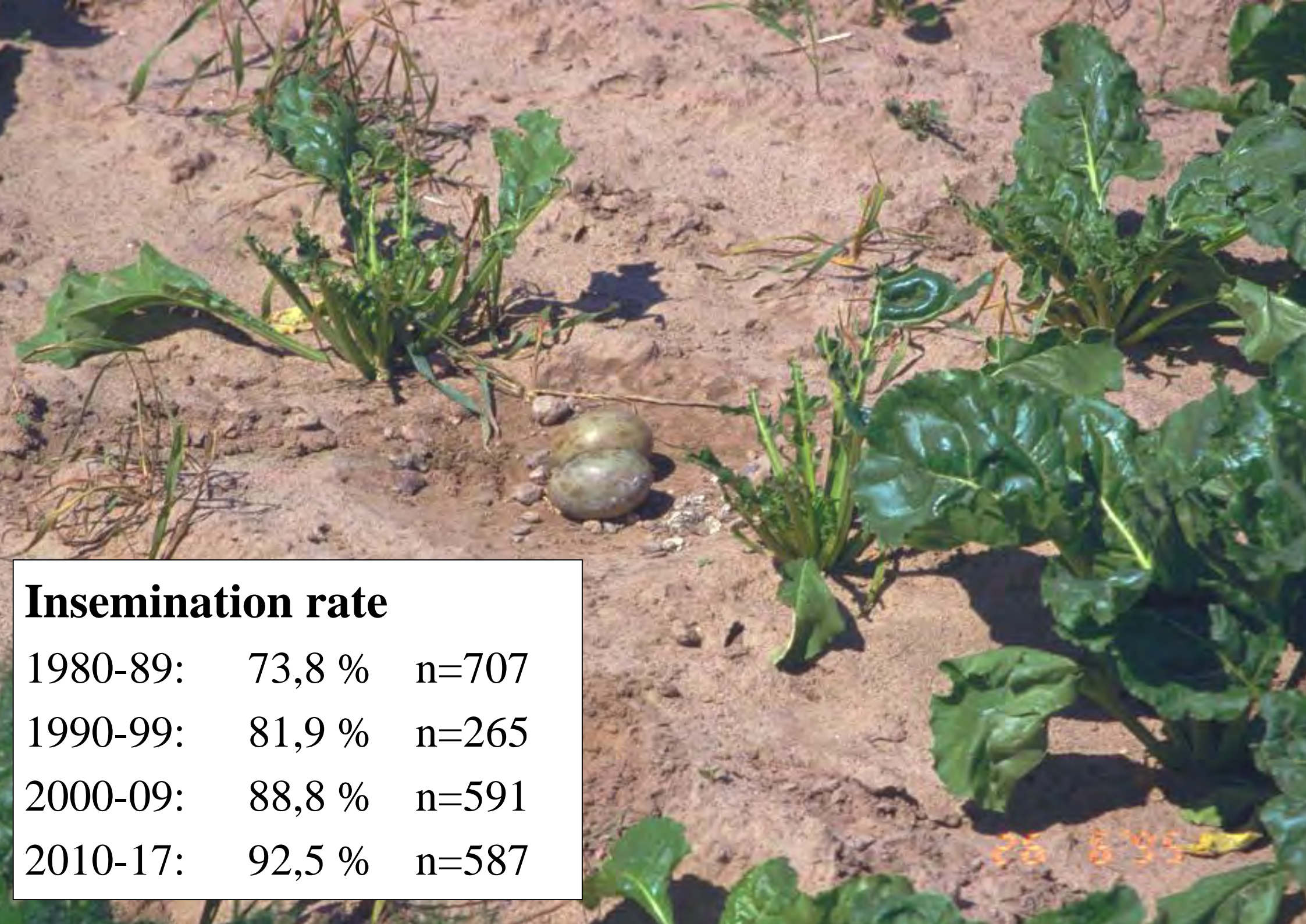






Display, mating, flight distance etc. →  
we are „well-behaved“





## Insemination rate

1980-89:	73,8 %	n=707
1990-99:	81,9 %	n=265
2000-09:	88,8 %	n=591
2010-17:	92,5 %	n=587



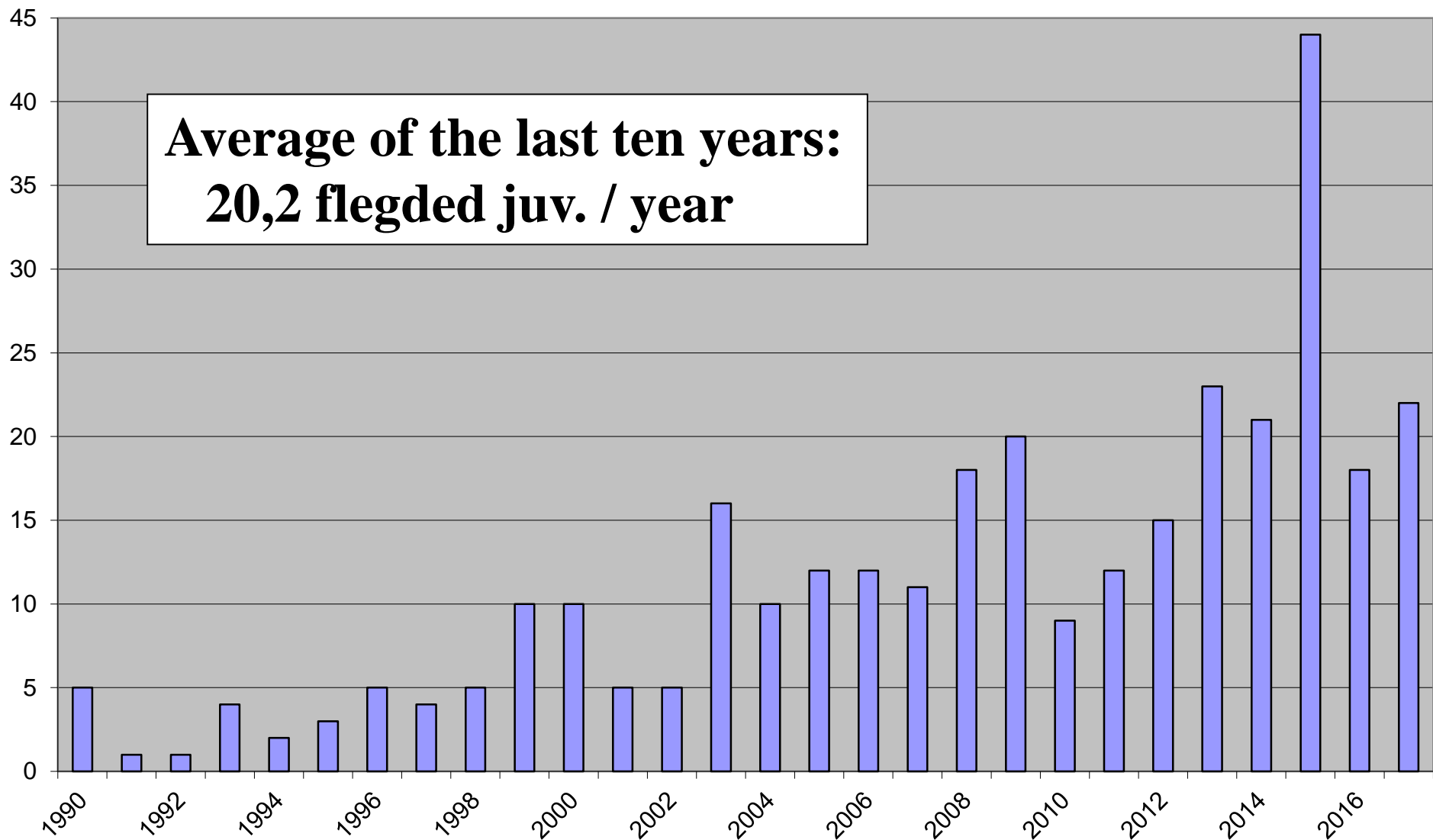








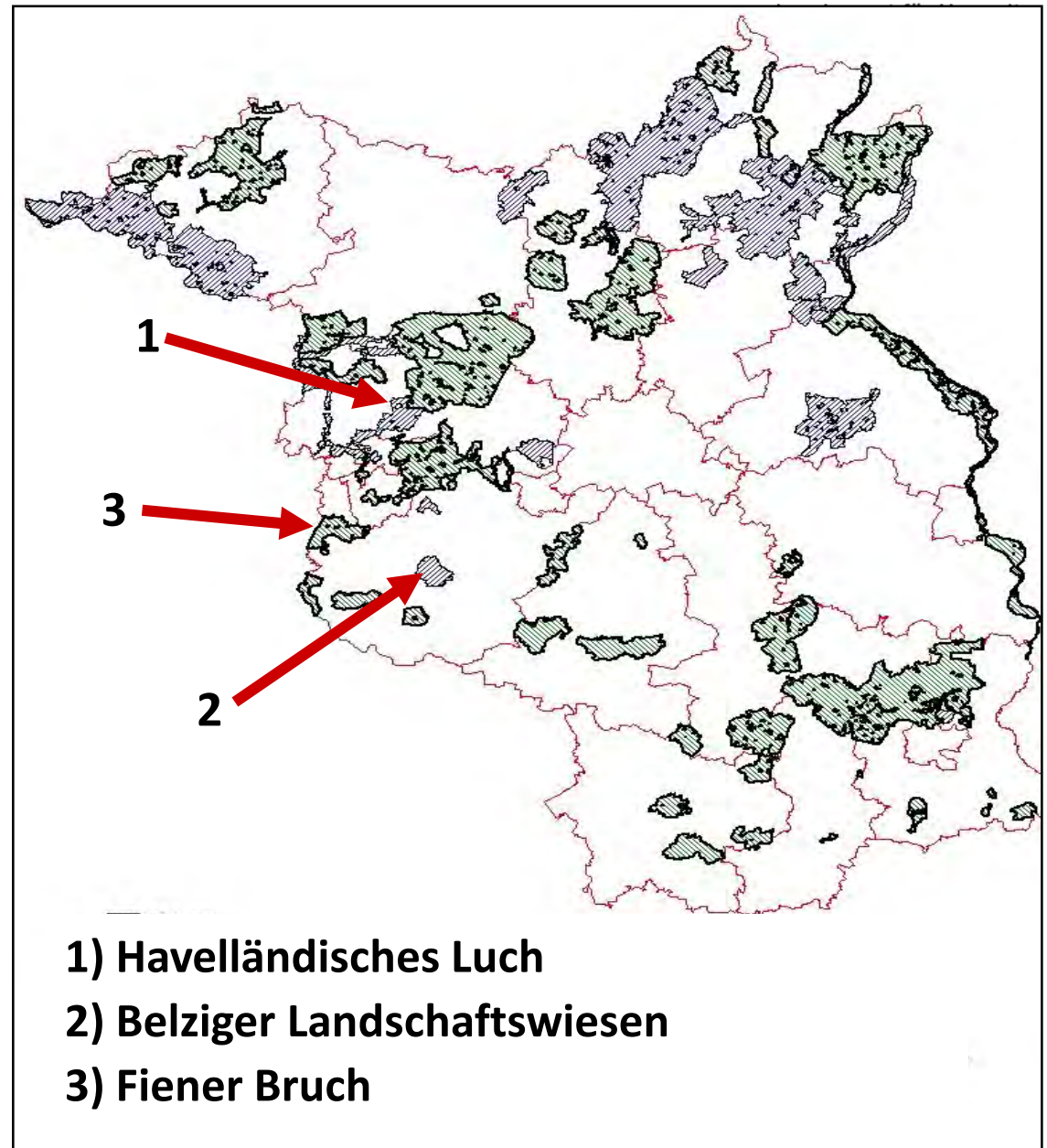
# Increasing offspring in the field











- 1) Havelländisches Luch
- 2) Belziger Landschaftswiesen
- 3) Fiener Bruch



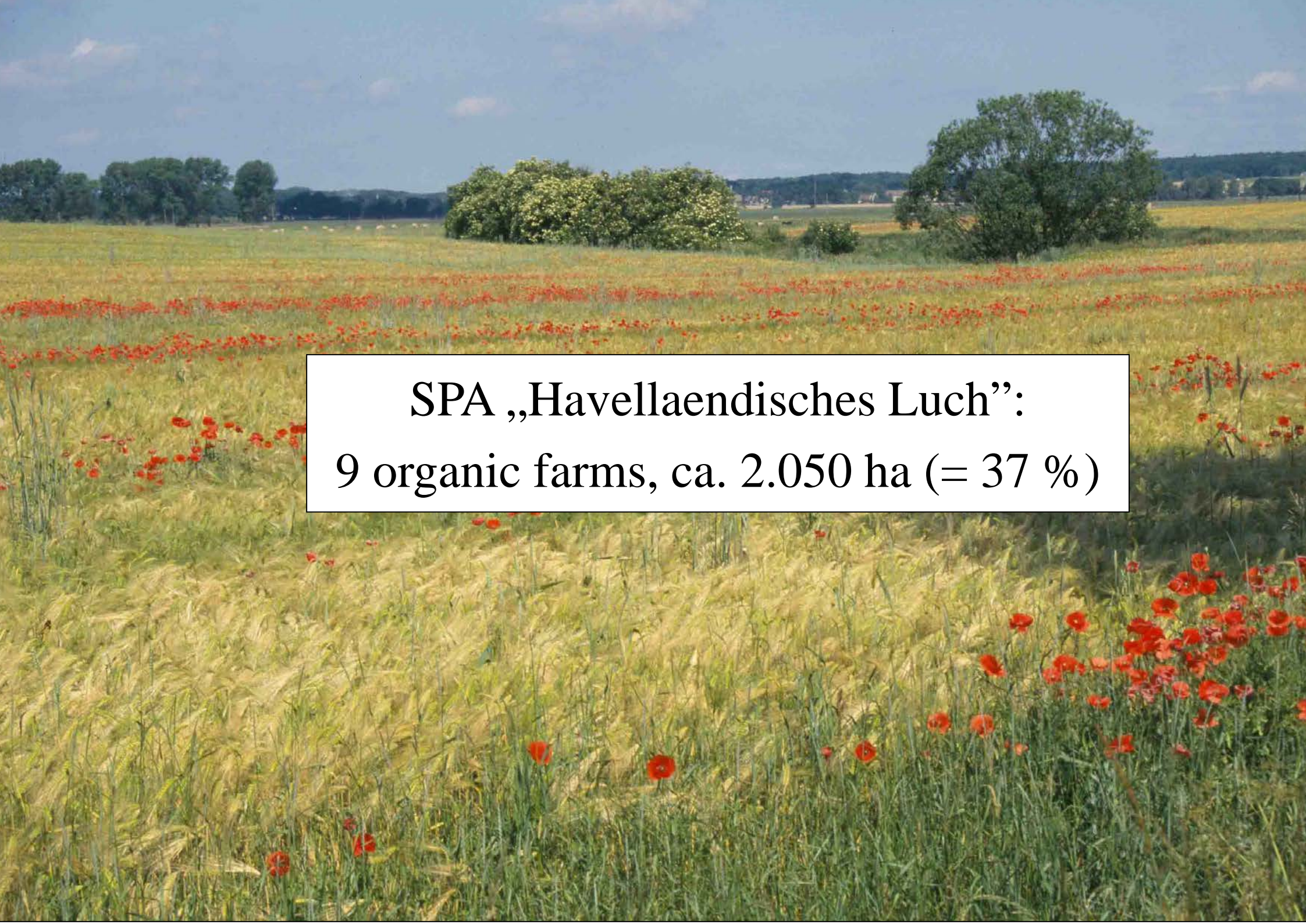
# Improving habitat quality







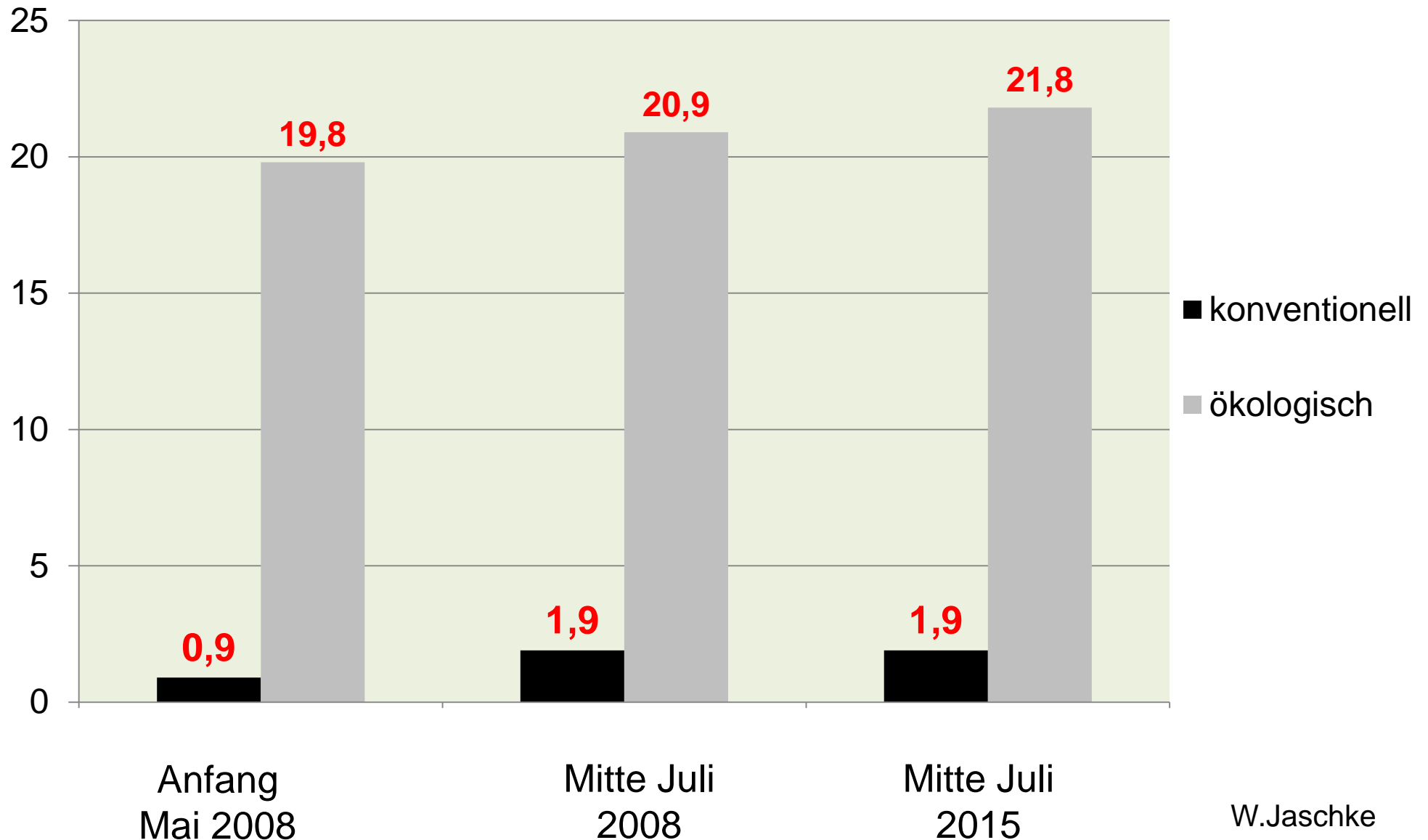




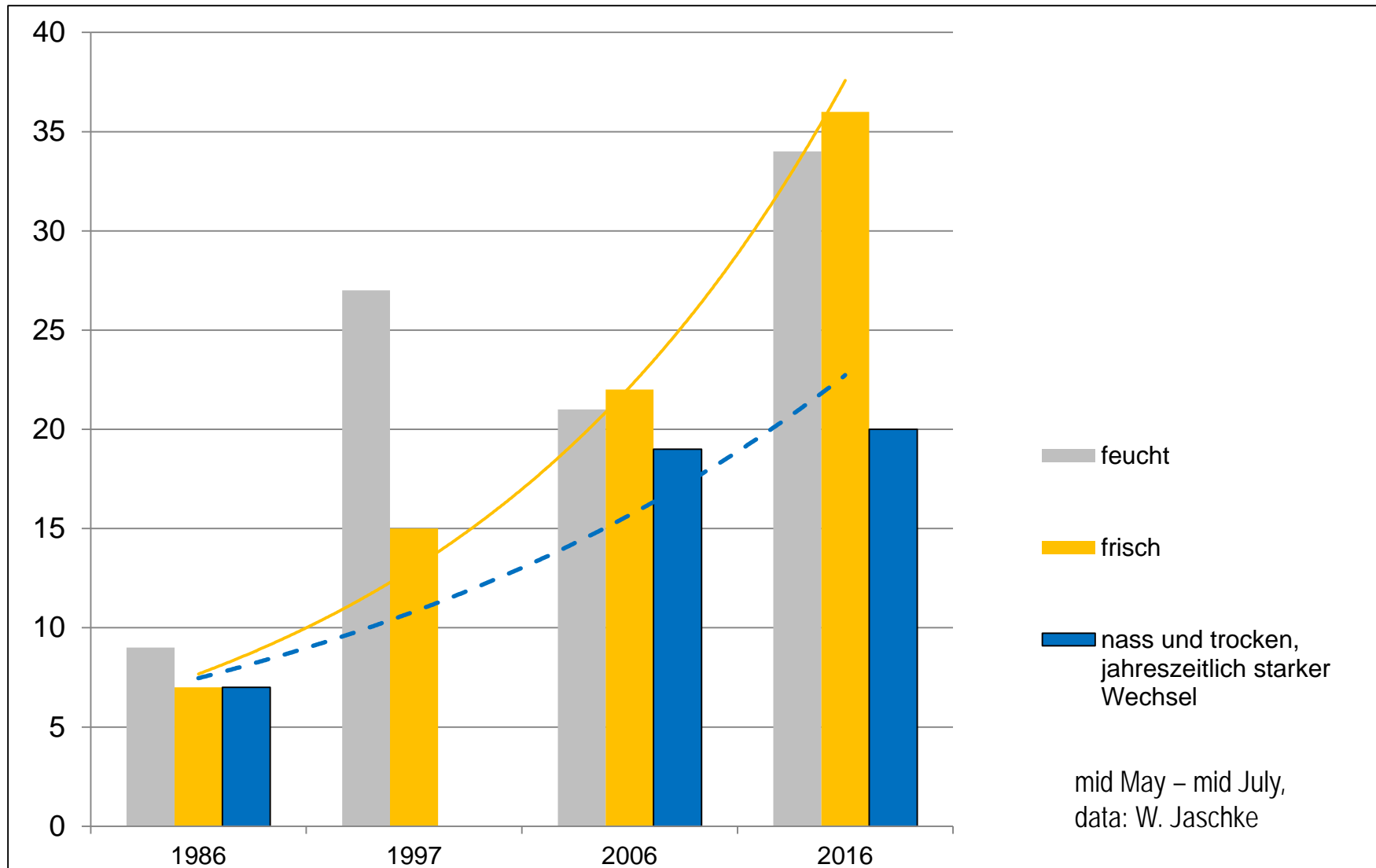
SPA „Havellaendisches Luch”:  
9 organic farms, ca. 2.050 ha (= 37 %)



## Beatles > 5mm in winter cereals SPA Havelländisches Luch



# Arthropods in grassland SPA Havelländisches Luch

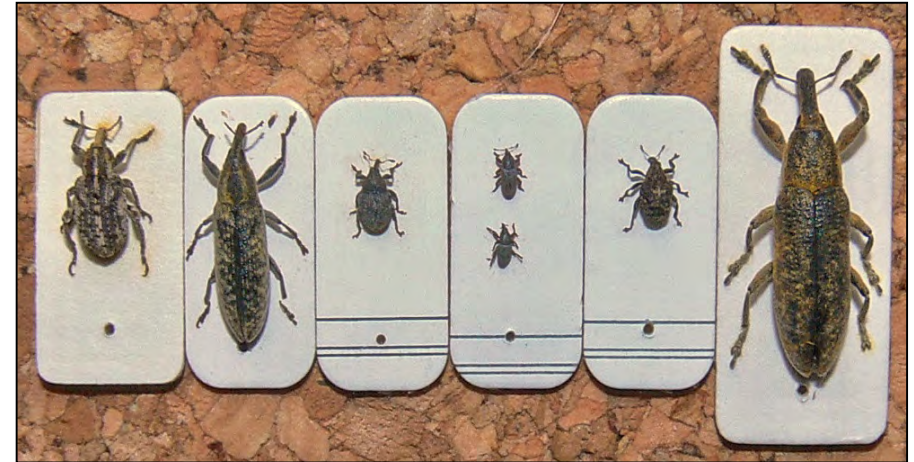








# Increasing diversity in plants and invertebrates

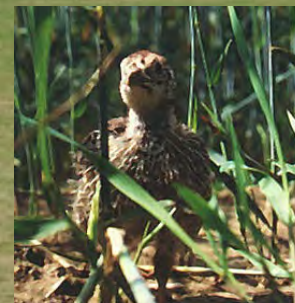


More and more **Red List** species!

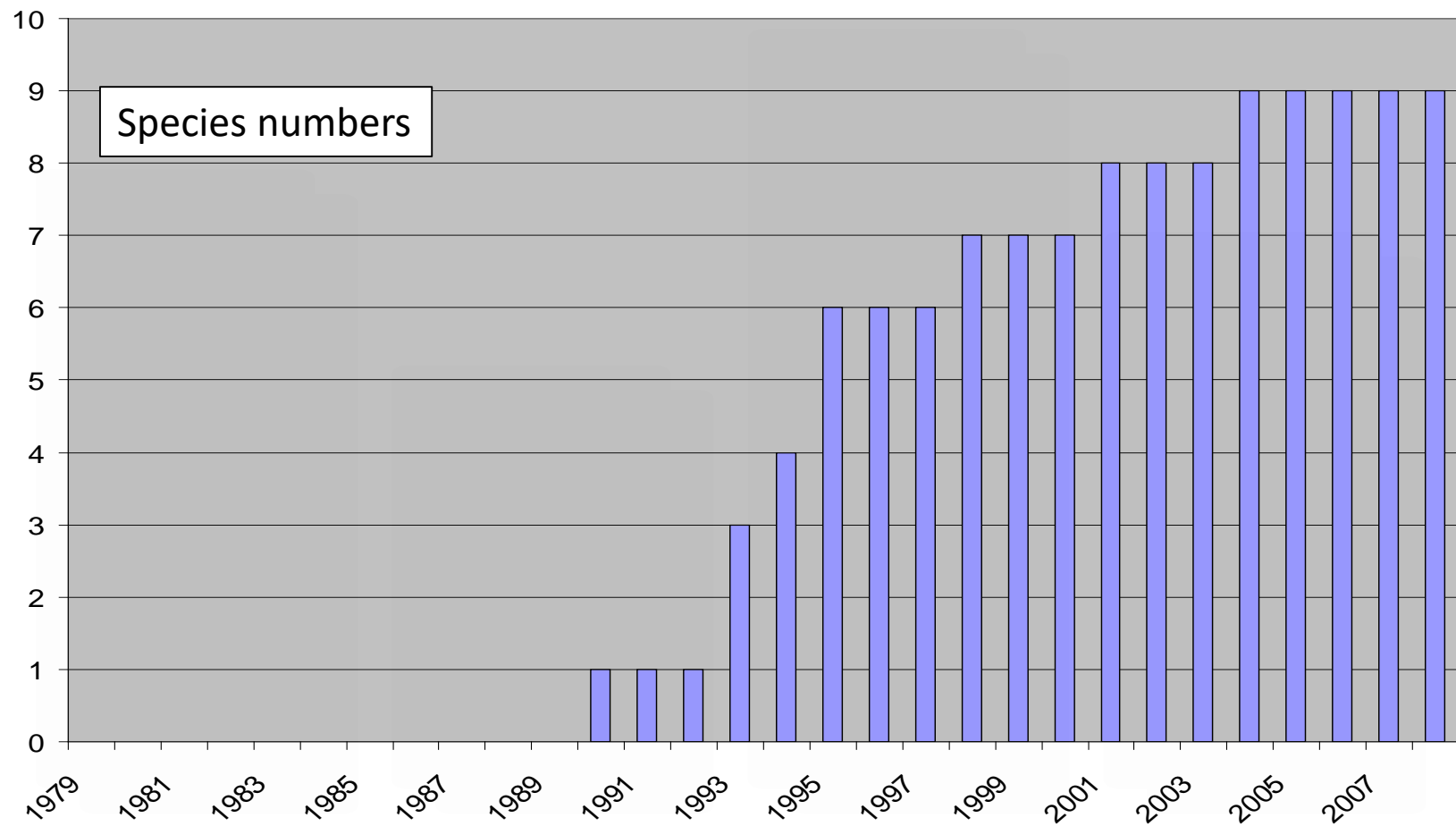




# Increasing bird diversity and abundance

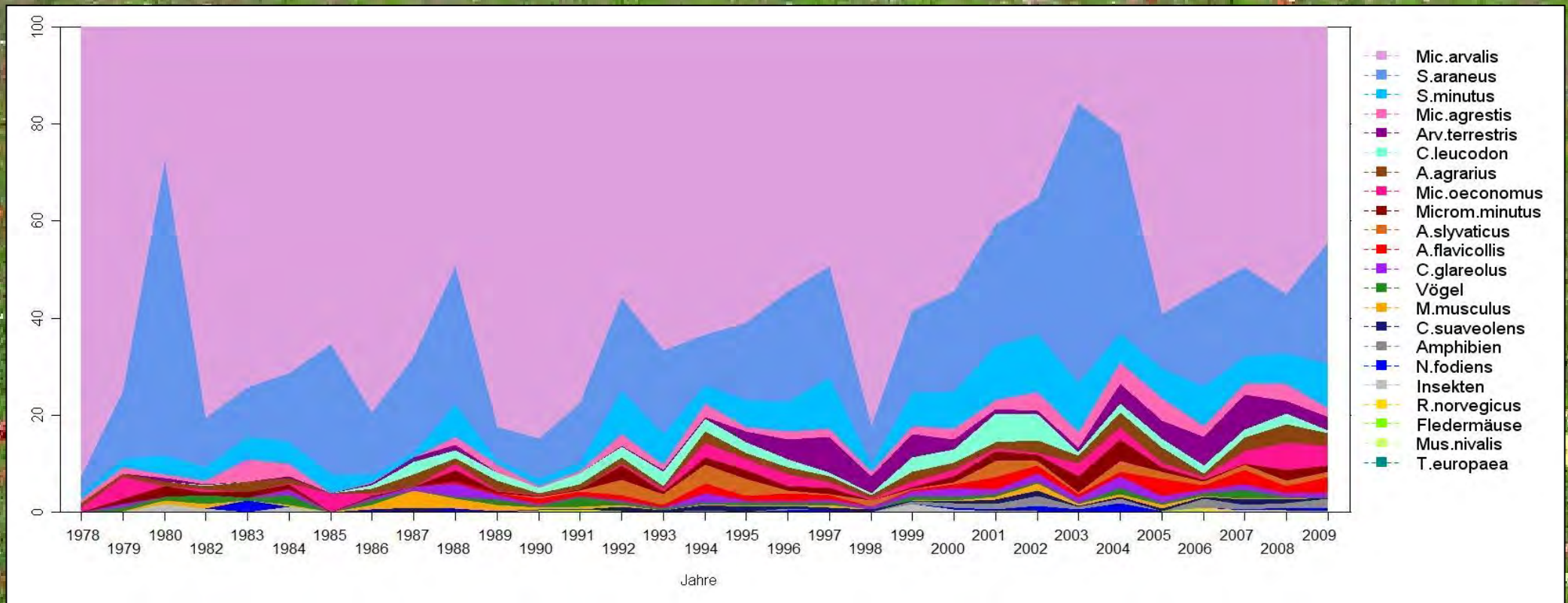


# Amphibians and reptiles on grassland

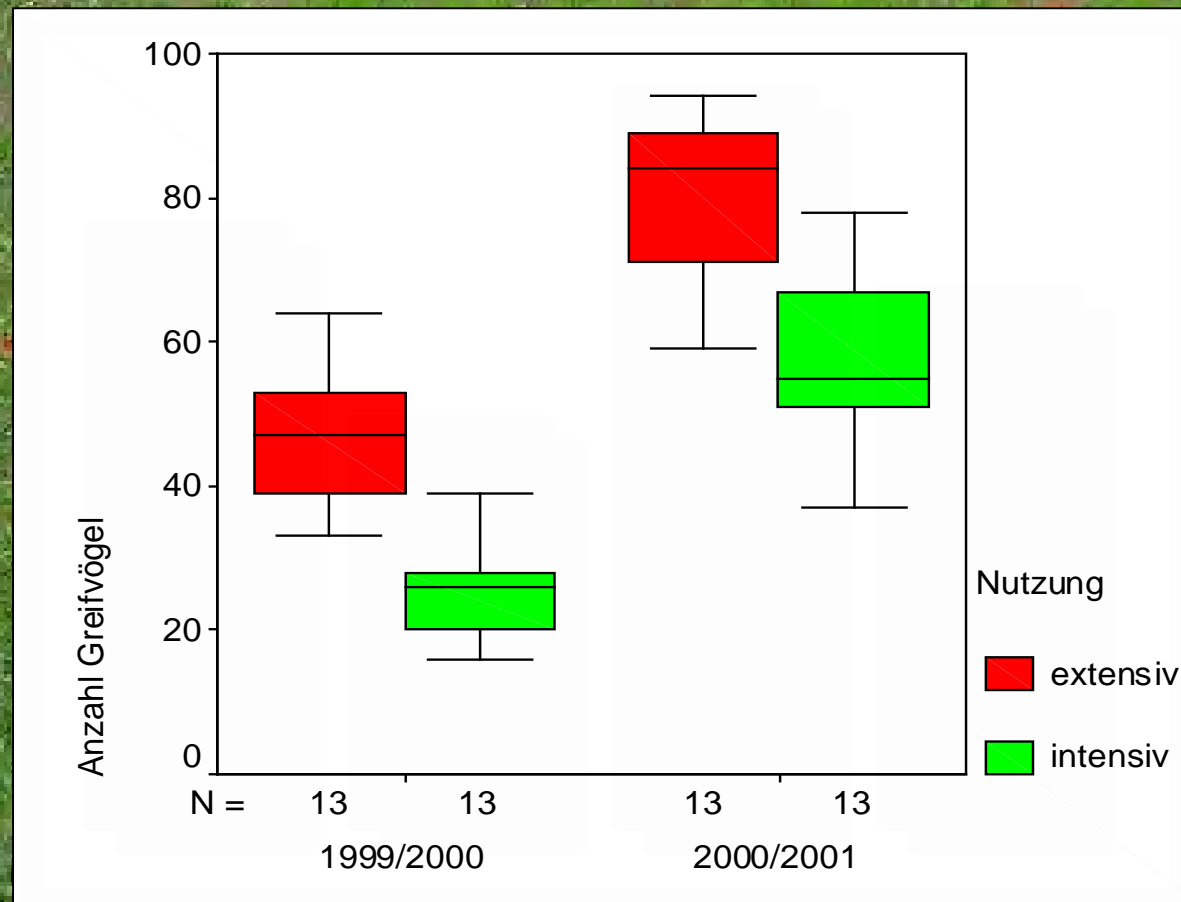




# Increasing diversity in small mammals



# Probably increasing abundance in small mammals





# Increasing diversity and numbers of other mammals















**What is not yet achieved?**























SAXONY-ANHALT

BRANDENBURG

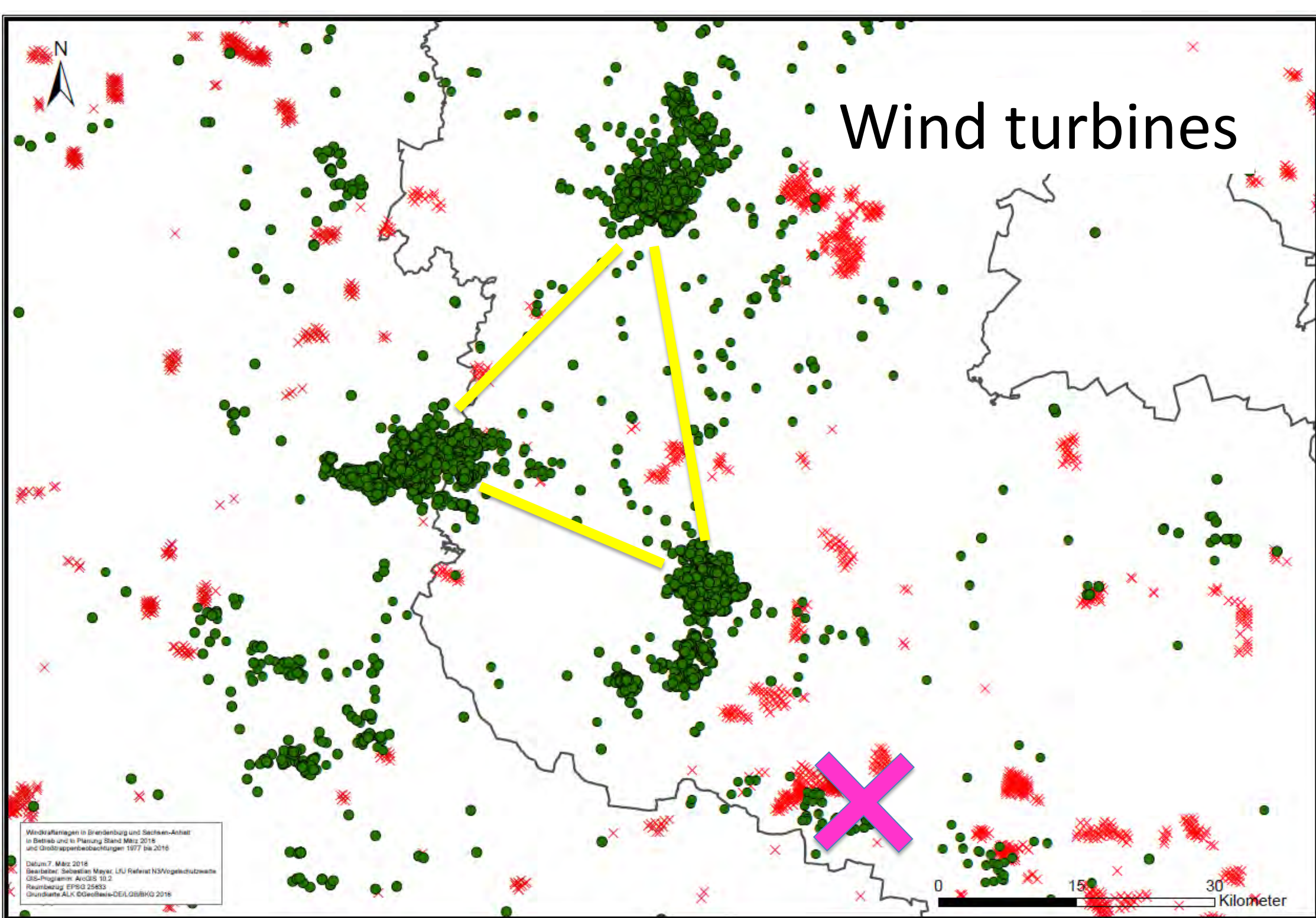
BERLIN

Windkraftanlagen in Brandenburg und Sachsen-Anhalt  
in Betrieb und in Planung Stand März 2016  
und Großbrunnenbeobachtungen 1977 bis 2016  
Datum: 7. März 2018  
Bearbeiter: Sebastian Meyer, UJL Referat NS/Vogelschutz  
GIS-Programm: ArcGIS 10.2  
Raumbezug: EPSG:25833  
Grundkarte: ALK, GeoBasis-DE/LBBKG 2016

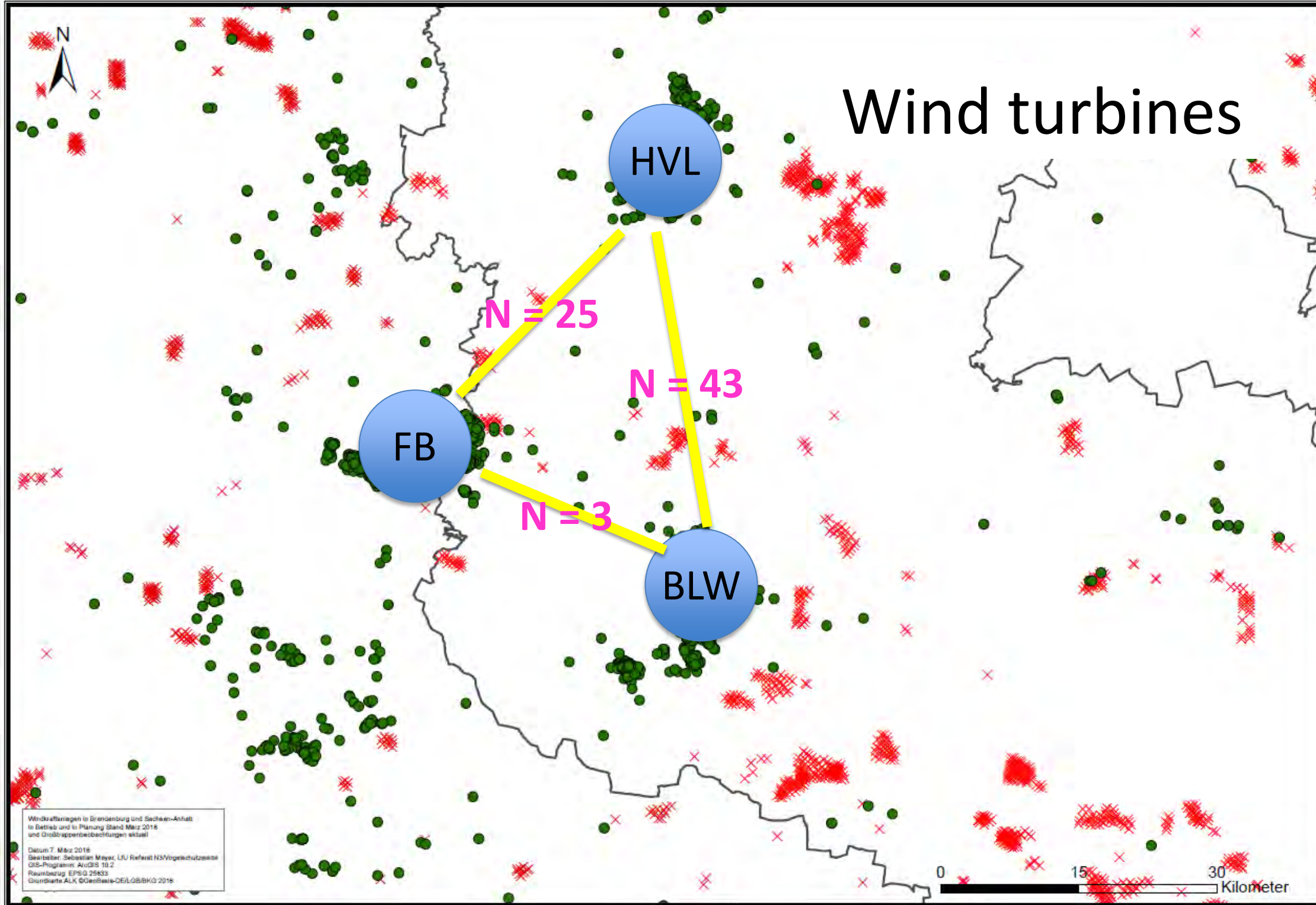
0 15 30  
Kilometer



# Wind turbines

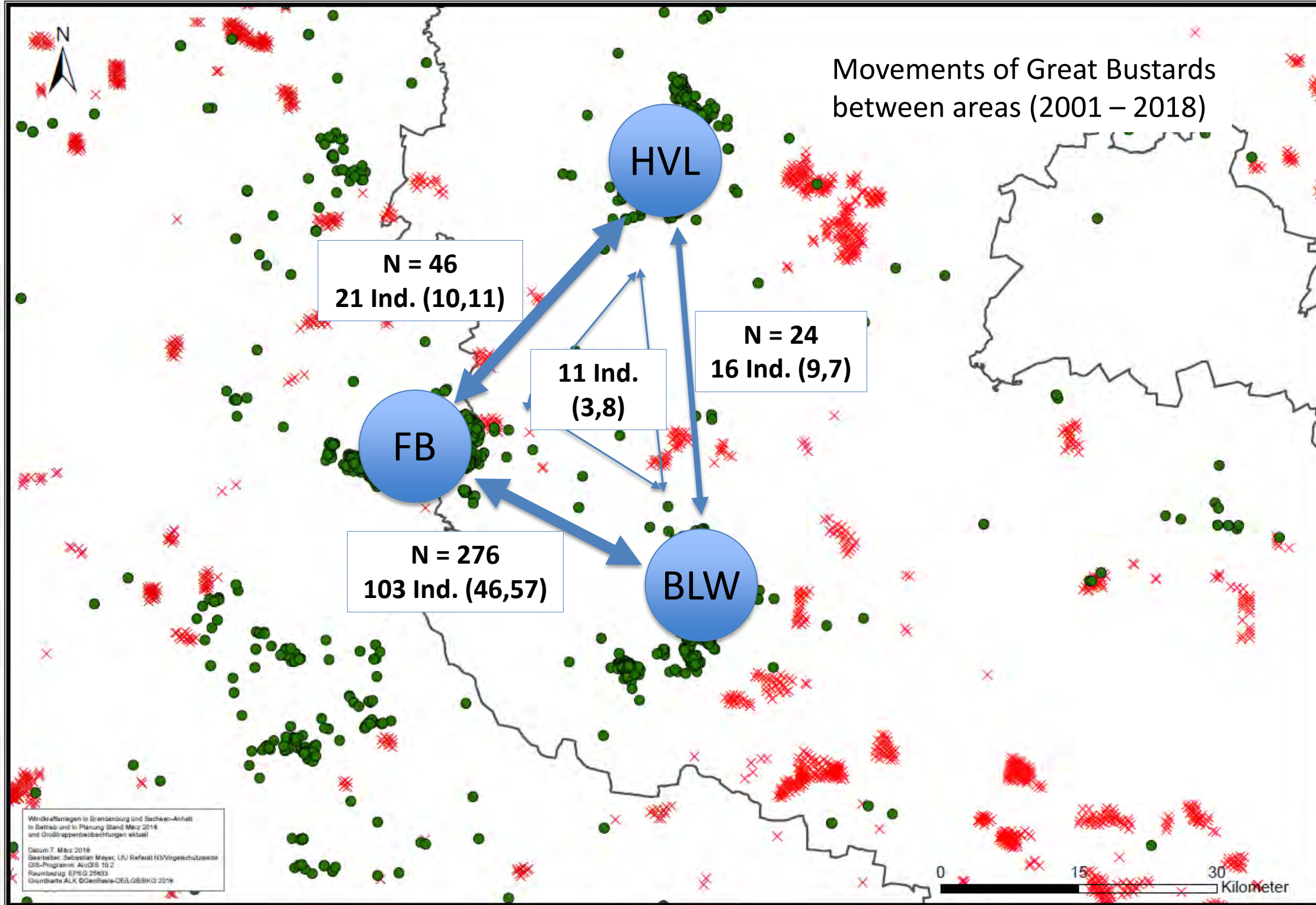


# Wind turbines





# Movements of Great Bustards between areas (2001 – 2018)



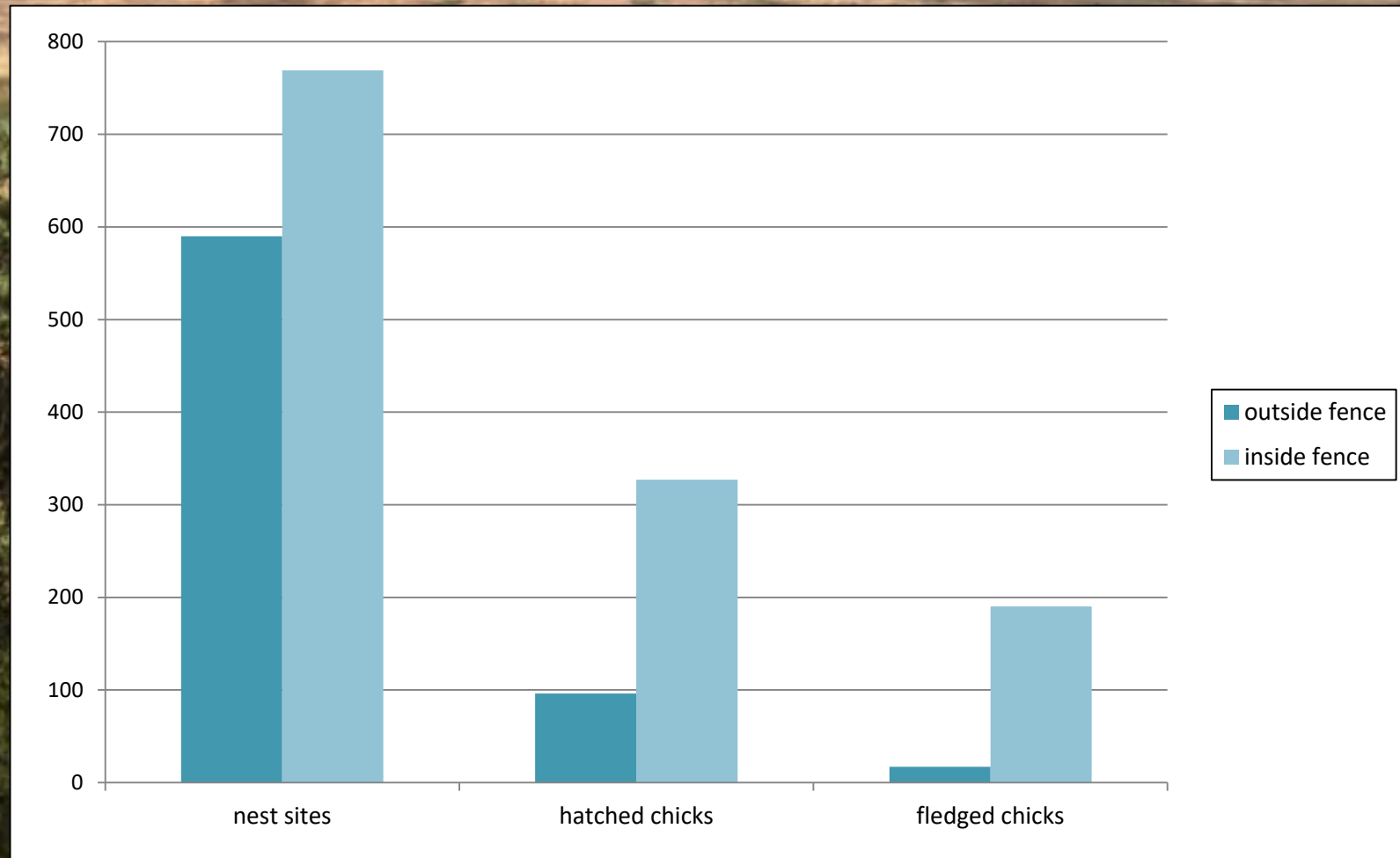




















1940



**2018**

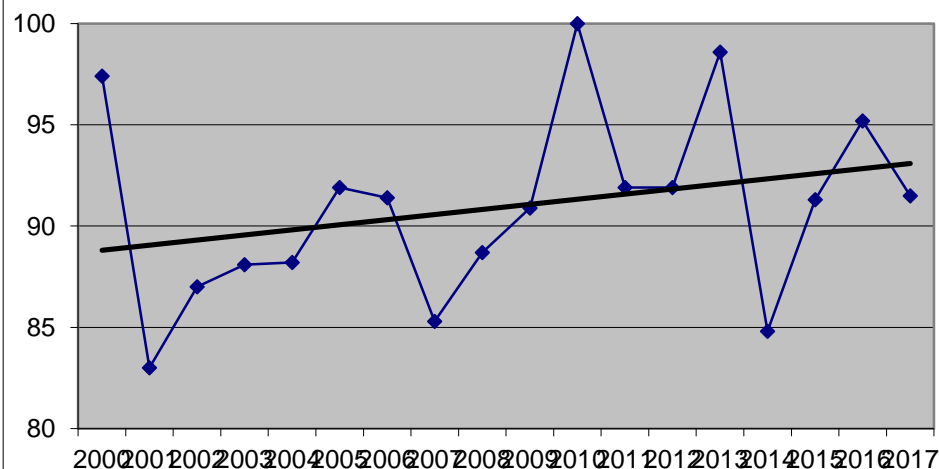


# Still need of reinforcement ...

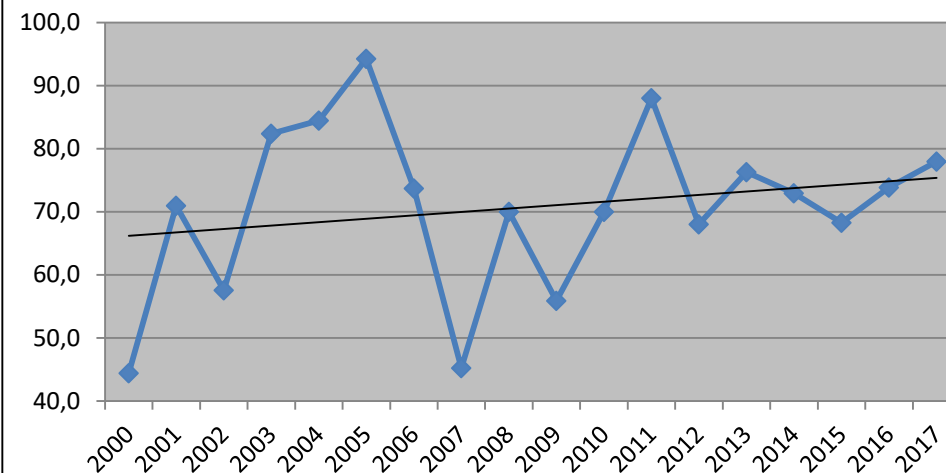


# Results of reinforcement ...

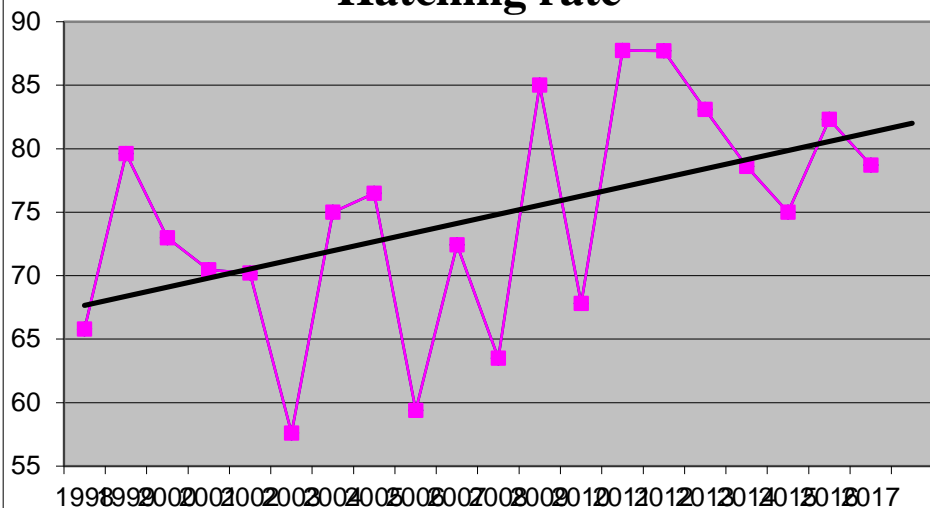
## Insemination rate



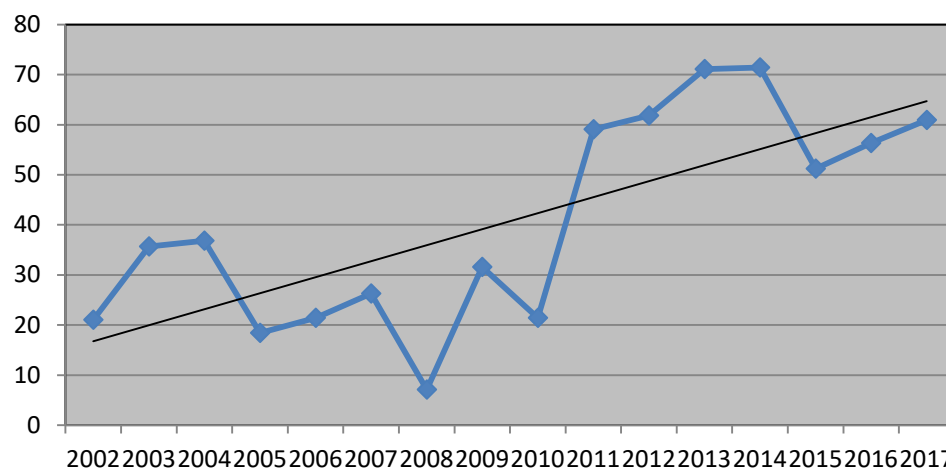
## Released birds per hatched chick



## Hatching rate

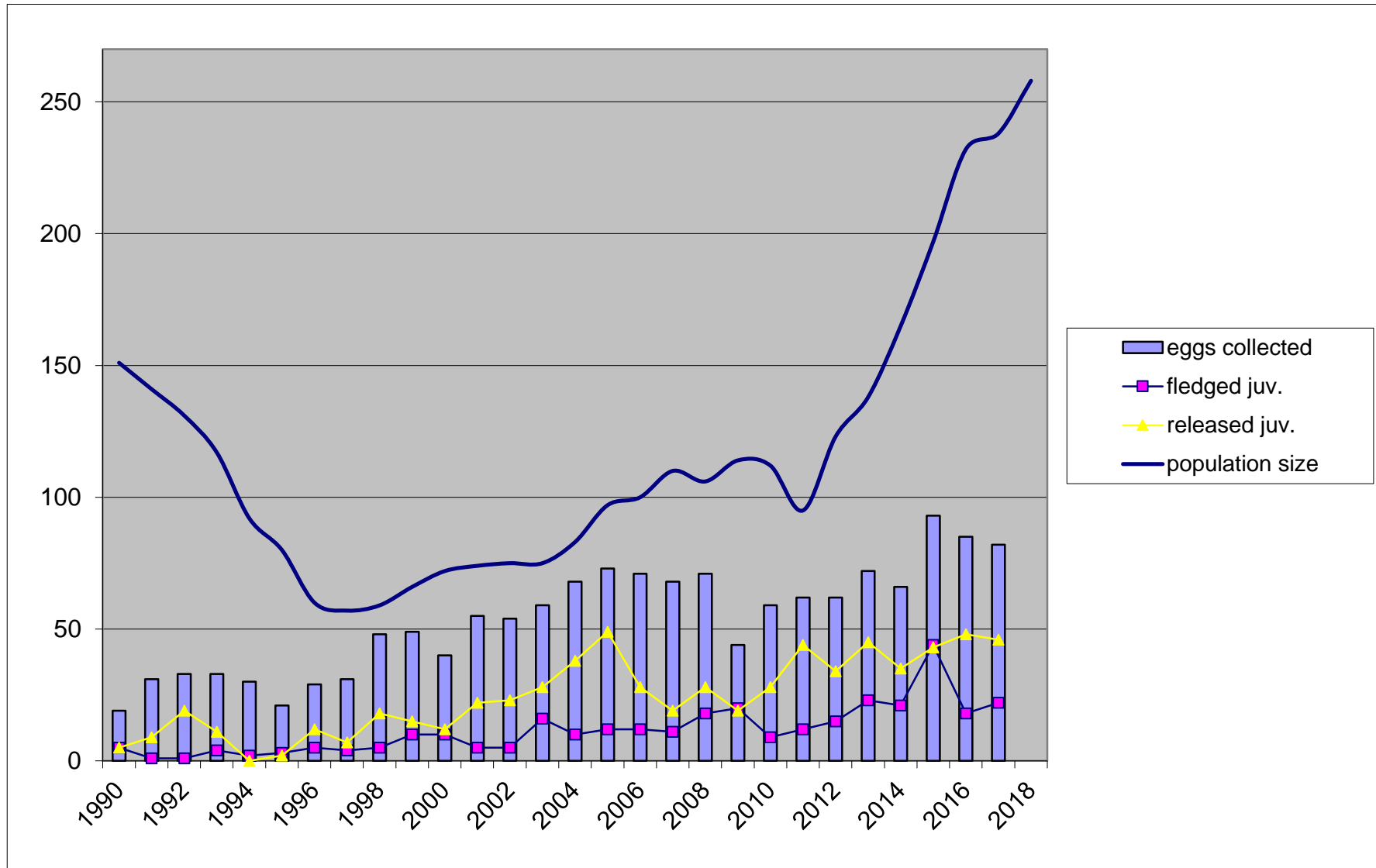


## Survival rate till next spring





# Wild offspring and reinforcement ...







Many thanks for nice photos  
to

B. Block (†), A. Eisenberg,  
N. Eschholz, S. Fahl,  
W. Jaschke, T. Krumenacker,  
H. Litzbarski, A. Marinkó, D.  
Nill & F. Plücken.

Thanks as well to all  
members of the staff incl. our  
NGO, all farmers and hunters  
involved and other persons  
who assisted!

