

**PRE-CMS COP 10 WORKSHOP TO ENHANCE THE CAPACITY
OF CMS/AEWA NEGOTIATORS
ENTEBBE, UGANDA**

**Overview of CMS and its Structure in Relation to COP 10
by
Sofia Chaichee**

26-28 OCTOBER 2011

UNEP/CMS Secretariat Representative



Federal Ministry for the
Environment, Nature Conservation
and Nuclear Safety



Schweizerische Eidgenossenschaft
Confédération suisse
Confederazione Svizzera
Confederaziun svizra

Swiss Confederation

Federal Office for the Environment FOEN





This presentation seeks to explain the role of various Conference bodies in preparing for and administering COP 10



CONVENTION ON MIGRATORY SPECIES



CONFERENCE OF THE PARTIES

– Decision-making body

- Reviews implementation
- Adopts budget resolutions
- Amends Species lists

PLENARY

COMMITTEES

COW

BUREAU

STANDING COMMITTEE

Regional representation

- General policy guidance
- Operational and financial direction

WORKING GROUPS

SCIENTIFIC COUNCIL

Appointed national experts

- by CMS parties & COP
- Advise on scientific matters

WORKING GROUPS

SECRETARIAT

Coordinating body

- Develops/promotes Agreements and MOUs
- Disseminates information
- Organises meetings

The COP is the **decision-making** body of the Convention



- Adopts **the budget** for each financial period
- Reviews and assesses the **conservation status of migratory species** and the progress made towards their conservation.
- Reviews **the implementation** of the Convention
- Provides **guidance**, receives reports and makes **recommendations** to the Parties



The COP is the **decision-making** body of the Convention



The COP meets at intervals of not more than three years.

- Since entered into force in **1983**, the COP has held **nine conferences** of which 3 in **Africa**:
 1. **COP4** (-94) in Nairobi, Kenya
 2. **COP6** (-99) in Cape Town, SA
 3. **COP8** (-05) in Nairobi, Kenya



Standing Committee (StC)



Provides general policy guidance.

Responsible for carrying out **interim activities on behalf of the COP** in order to ensure the COP decisions are implemented, such as:

- Monitoring the **budget**
- Making **recommendations** for consideration by the next COP
- Providing **advice and guidance** to the Secretariat
- **Representing the COP in negotiations** with the Host Government and UNEP with regard to the Secretariat

The StC usually **meets immediately before** the COP to **adopt reports, joint programs** provided by the Secretariat as well as to **discuss the budget**.

Intersessionally, meets **once a year** to fulfill its role of **monitoring progress** for the **implementation** of the Convention's work program.

The Membership of the StC shall be agreed at each meeting of the COP and shall comprise regional representation of:



- **Three parties** elected from each of the geographic regions (a) **Africa** and (b) **Europe**;
- **Two parties** elected from each of the geographic regions (a) **Asia** and (b) **South and Central America** and the **Caribbean**;
- **One party** from each of the geographic region (a) **North America** and (b) **Oceania**;
- The Depositary and the Host Government of the host of the Secretariat.

Standing Committee Members for the Triennium 2008-2011		
Region	Members	Alternate Members
Africa	Ghana (Vice-Chair)	Uganda
	Senegal	Democratic Republic of the Congo
	Tunisia	South Africa
Asia	Saudi Arabia (Chair)	Syrian Arab Republic
	Pakistan	Islamic Republic of Iran
South & Central America & Caribbean	Chile	Argentina
	Panama	Antigua & Barbuda
Europe	Monaco	Norway
	Netherlands	France
	Poland	Georgia
North America	Vacant	Vacant
Oceania	Philippines	New Zealand
Depositary	Host of COP9	Host of COP10
Germany	Italy	Norway

Scientific Council (ScC)



Provides scientific and technical advice

- Advises on **research priorities** and helps to **coordinate** such research
- **Provides advice on the conservation measures** to be taken to benefit the species covered by the Convention.
- **Made up of national experts** chosen by the Parties together with a number of specialists appointed by the COP.

The ScC meets immediately before the COP to iron out the scientific issues and conflicts before the COP.

- **Makes recommendations to the COP** on the topics discussed.
- Considers the **listing of species on the Conventions two appendices.**

Bureau

“Ministers of the Country of COP”

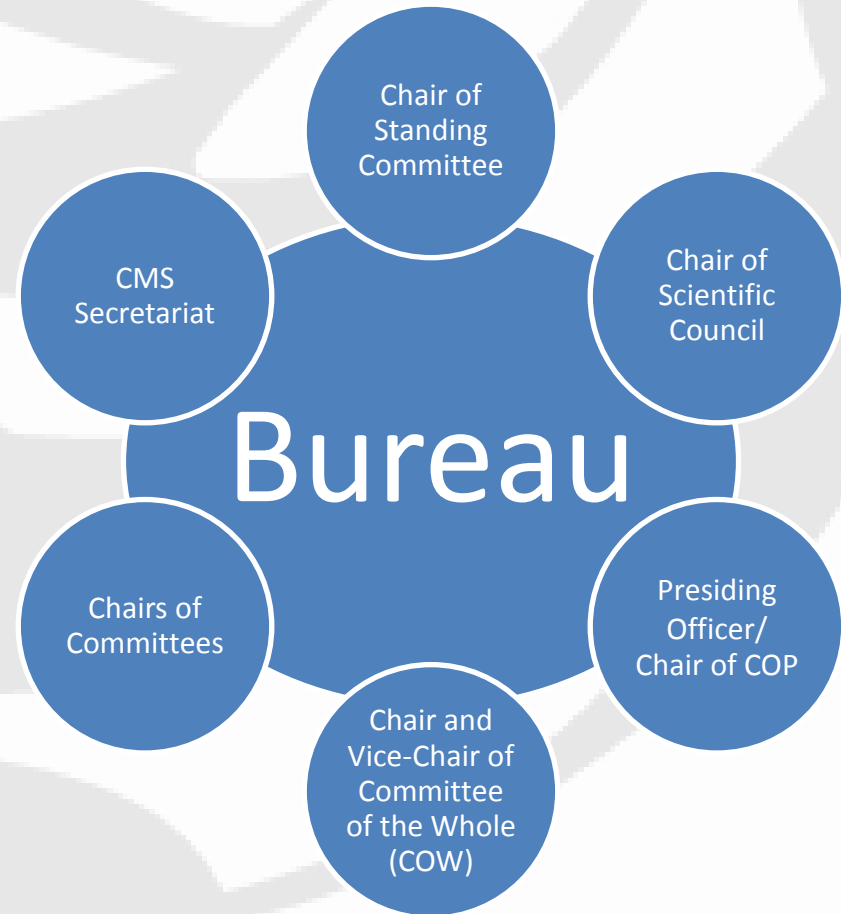


The Bureau is a COP organ to:

- run the meeting timetable and structure
- specify time limits for debates.

The Presiding Officer (Chair of the COP) presides over the Bureau

Representation of Africa?



Plenary

“Political organ”



- COP in **full decision-making mode**.
- Meets at the start of the COP to **elect officers, establish committees** and adopt the Rules of Procedure (ROP).
- Meets briefly in the middle for **an update from the committees**
- Meets at the end to **adopt resolutions**, changes to the Appendices and closes the meeting.
- **Only in plenary can decisions be made.**

Committee of the Whole (COW)

“technical organ”



- This is the COP **in discussion mode** and will take up most of the main sessions.
- It might **meet in parallel** with some of the other Committees.
- The COW **makes recommendations** to the Plenary
- **It does not make binding decisions.**

AGENDA ITEM	
ISSUE	Plenary/ COW
Opening of the meeting	PL
Welcoming addresses	PL
Adoption of Rules of Procedure	PL
Election of officers	PL
Adoption of agenda and schedule	PL
Establishment of Credentials Committee and other sessional committees	PL
Admission of observers	PL
Key note address	PL
Reports from Convention and Agreement bodies and UNEP	
Standing Committee	COW
Scientific Council	COW
Article IV Agreements/MoUs	COW
UNEP	COW
MoU Signing Ceremony	
Overview of the process regarding the “Future Shape” of CMS / Proposals on organization and strategic development of the CMS Family	COW
Budget and administration	
CMS budget 2012-2014 and Medium Term Plan 2012-2017	COW



Statements from States	
Depositary & Host Country	COW
Party States (including REIOs)	COW
Statements on cooperation	
Biodiversity-related MEAs (including CBD COP10 and NBSAPs)	COW
Synergies and partnerships	COW
Intergovernmental Science and Policy Platform on Biodiversity and Ecosystem Service (IPBES)	COW
Other intergovernmental bodies	COW
Non-governmental organizations	COW
Process regarding the Future Shape of CMS	
Extension of the ACCOBAMS area	COW
Merger of CMS and ASCOBANS Secretariat functions	COW
CMS Strategic Plan	
Assessment of the implementation of the Strategic Plan 2006-2011	COW
Strategic Plan 2012-2014	COW
Budget and administration	
Execution of CMS budget 2009-2011	COW
Resource mobilization	COW
Enhancing engagement with the Global Environment Facility	COW
Measures to improve the conservation status of Appendix I species	
Progress on concerted and other actions	COW
Other measures to promote the conservation of Appendix I species	COW



Measures to improve the conservation status of Appendix II species	
Development of new and future Agreements/gap analysis for Central African Elephants	COW
Gap analysis for Central African Elephants	COW
Other measures to promote Appendix II species	COW
Conservation Issues	
Migratory avian species	
Bird flyway conservation policy	COW
Migratory terrestrial species	COW
Migratory marine turtles	COW
Proposals submitted by Parties to amend Appendices of the Convention	COW
Interim report of credentials committees	PL
Interim reports of sessional committees	PL
Critical sites and ecological networks for migratory species	COW
Barriers to migration	COW
Conservation emergencies	COW
Climate change and migratory species	COW
Migratory aquatic species	
Review of freshwater fish	COW
Assessment of bycatch in gill net fisheries	COW
Implementation of Res 8.22 on human-induced impacts on cetaceans	COW
Programme of work for cetaceans	COW
Underwater noise	COW
Marine debris	COW
Migratory avian species	
Taxonomy and nomenclature of birds listed on the Appendices	COW
Landbird conservation	COW
Poisoning	COW
Wildlife diseases	COW





CMS Outreach and Communications	
Capacity building	COW
“Year of the ...” species campaigns	COW
CMS Ambassadors	COW
Implementation of the Outreach and Communication Plan	COW
Institutional issues	
Elections to Scientific Council and Standing Committee	PL
Other institutional issues	PL
Final report of the Credentials Committee	PL
Reports of sessional committees	PL
Adoption of amendments to the Appendices	PL
System for retiring Resolutions	PL
Adoption of resolutions and recommendations	PL
Date and venue of 11 th COP	PL
Adoption of the report for the meeting	PL
Any other business	PL
Closure of the meeting	PL



How to enhance regional participation, in order to have important issues of regional interest addressed?



Thank you!

Merci!

Kiitos!

CONVENTION ON MIGRATORY SPECIES



- CONFERENCE OF THE PARTIES –
Decision-making body**
- Reviews implementation
 - Adopts budget resolutions
 - Amends Species lists

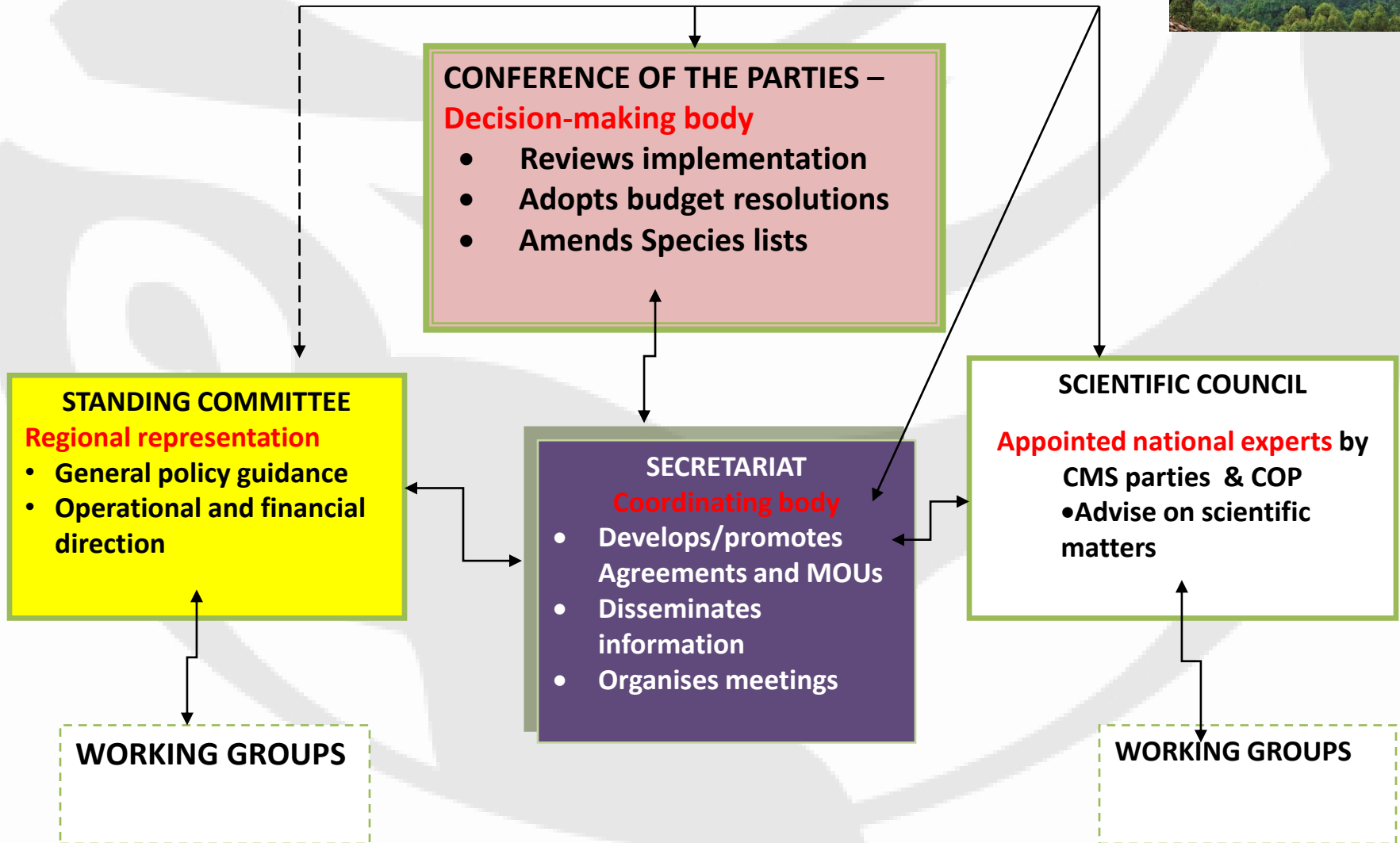
- STANDING COMMITTEE
Regional representation**
- General policy guidance
 - Operational and financial direction

- SCIENTIFIC COUNCIL
Appointed national experts by
CMS parties & COP**
- Advise on scientific matters

- SECRETARIAT
Coordinating body**
- Develops/promotes Agreements and MOUs
 - Disseminates information
 - Organises meetings

WORKING GROUPS

WORKING GROUPS



CONVENTION ON MIGRATORY SPECIES



CONFERENCE OF THE PARTIES

– Decision-making body

- Reviews implementation
- Adopts budget resolutions
- Amends Species lists

PLENARY

COMMITTEES

COW

BUREAU

STANDING COMMITTEE

Regional representation

- General policy guidance
- Operational and financial direction

SCIENTIFIC COUNCIL

Appointed national experts by CMS parties & COP

- Advise on scientific matters

SECRETARIAT

Coordinating body

- Develops/promotes Agreements and MOUs
- Disseminates information
- Organises meetings

WORKING GROUPS

WORKING GROUPS

