



Scottish Windfarm Bird Steering Group

Scottish Windfarm Bird Steering Group (SWBSG)

Professor Colin A Galbraith (Chair)

Professor Des Thomson (initiator)



Onshore Wind Farms in Scotland (August 2013)

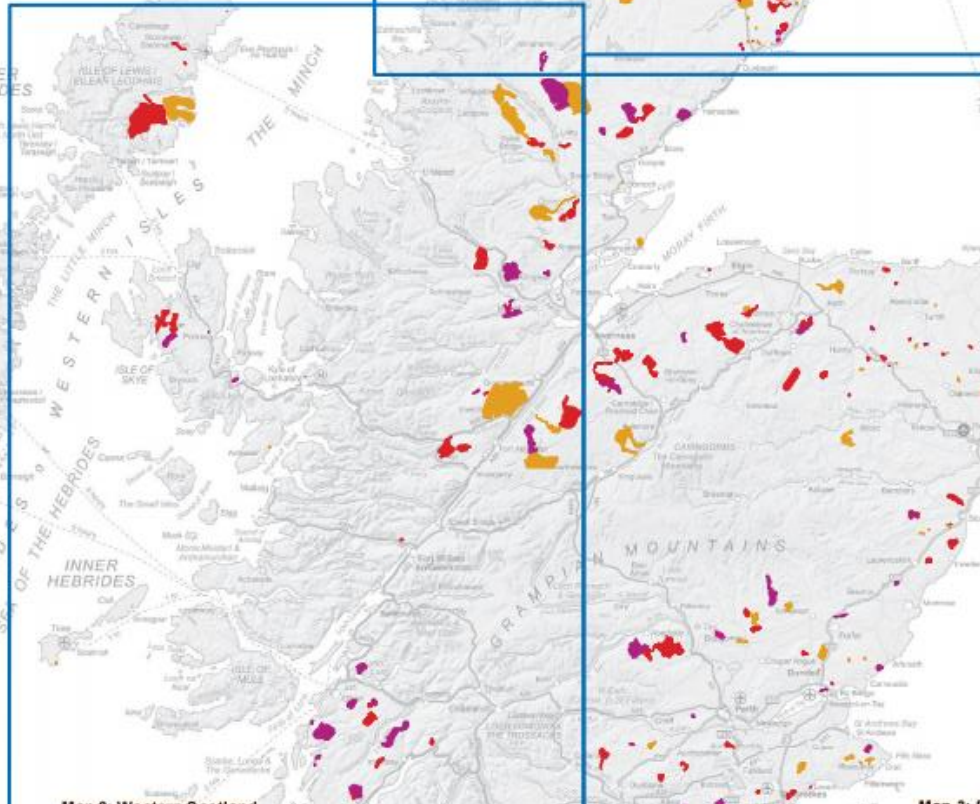
Key to footprints:

- Scoping
- Installed/approved
- Application

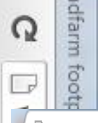
Note: this is not necessarily a comprehensive dataset of all wind farm schemes in the public domain and there may be some errors in the information supplied on this map.

 Scottish Natural Heritage
Dutchies Natur nati-Allot

© Crown copyright and database rights 2013.
Ordnance Survey 100017908



For quick access, place your bookmarks here on the bookmarks bar. Import bookmarks now...



Windfarm impacts on birds x www.snh.gov.uk/docs/A1/ x
www.snh.gov.uk/planning-and-development/renewable-energy/onshore-wind/windfarm

Apps For quick access, place your bookmarks here on the bookmarks bar. Import bookmarks now...

- ▶ Planning and renewable energy guidance
- ▶ Advice for planners and developers
- ▶ Our approach and what to consult us on
- ▶ Valuing our environment
- ▶ Environmental assessment
- ▼ Renewable energy
 - ▶ Our approach to renewables
 - ▶ Marine renewables
 - ▼ Onshore wind energy
 - Windfarm impacts on birds' guidance
 - ▶ Bird collision risks guidance
 - ▶ Landscape impacts guidance
 - ▶ General advice and information
 - ▶ Good practice during windfarm construction
 - ▶ Peat restoration video
 - ▶ Hydro
 - ▶ Visual representation
 - ▶ Bioenergy
 - ▶ Micro renewables
 - ▶ Guidance for developers
 - ▶ Research, data and trends
 - ▶ Consultations
 - ▶ Conferences, events and

Wind farm impacts on bird guidance

It is widely accepted that wind farms generally pose a potential risk to birds:

- displacement through indirect loss of habitat in the wind farm and its surrounding area due to construction, maintenance or visitor disturbance. Displacement effects in which birds are deterred from normal routes to feeding or roosting grounds
- death through collision or interaction with infrastructure
- direct habitat loss through construction of infrastructure.

An assessment of a potential wind farm's effect on birds at a site should thoroughly consider each of these threats for each bird species which uses the site.

Wind farm and birds collisions

If you have found a bird that has been in collision with a wind farm and wish to report this then please complete a collision record form and email collision.records@snh.gov.uk

The guidance outlined below is intended as an overview of the potential impacts that a windfarm development, from construction, may have on birds.

Assessing collision risks

[Recommended bird survey methods to inform the design of onshore wind farms](#) 

The Group

- Independent Chairman and part-time staff
- Resourced jointly by:
 - Scottish Government
 - Scottish Natural Heritage
 - Scottish Renewables
 - RSPB Scotland



Terms of Reference

- Provide an independent, scientific assessment of the impact of windfarms on birds
- Collate data and reports from bird monitoring at windfarms across Scotland



Terms of Reference

- Commission research on the interactions between windfarms and birds; informing future Environmental Impact Assessment and consenting decisions
- Coordinate research and monitoring activity on birds at terrestrial windfarms



The work programme

- Meta- Data Catalogue and data collection
- Research Programme
- Good Practice Guide



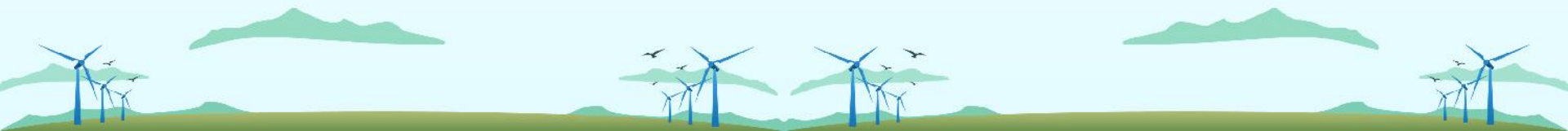
Meta-Data Catalogue

- Important to know what data have been collected and how they are collated
- Collation of meta-data continuing
- Tell us what data you have
- Developing an overview of surveys and studies undertaken so far



Data are needed on a variety of species

- Golden eagle
- Black grouse
- Red-throated diver
- Hen harrier
- Curlew
- Golden plover



Research

- The need to understand interactions between birds and bird populations with windfarms
- To obtain a clear overview
- To understand the impact (positive), of habitat management



Research partnership between Government and Industry



VATTENFALL



Research Programme

2013 Launched four year programme – with the initial phase underway now

- Displacement and avoidance
- Collision risk – modelling and reality
- Cumulative impacts
- Habitat management – potential



Research

- Created a “Research” group, involving industry, to help manage the research
- The work is being commissioned in phases
- Results will be available to funding bodies
- Key opportunity to understand the relationship between birds and windfarms



Research Programme

Project 1 Survey methods

University of Stirling

University of Newcastle

Reported early 2015

Project 2 Habitat Management

University of Newcastle

Reported early 2015



Research Programme: current projects

1. Population estimates and species dossiers
2. Collision risk
3. Cumulative impact
4. Revised monitoring methodology



Good Practice Guide 2016: Wind Farms Alongside Birds

Contents

Survey techniques

Collision risk and reporting

Data collation and sharing

Habitat management



Thank You

- If you are interested in finding out more about the SWBSG or contributing data to our programme:
- www.swbsg.org or contact claire.lacey@swbsg.org/
colin.galbraith@swbsg.org
- Des.Thompson@snh.gov.uk

