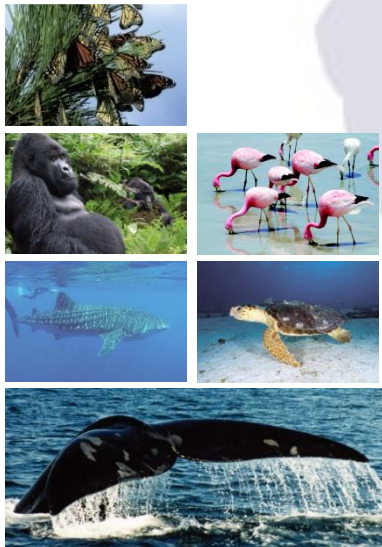


An overview of CMS activities and policy developments on climate change



Colin Galbraith, Chair of the CMS ScC CCWG
Marco Barbieri, UNEP/CMS Secretariat

**Workshop on Climate Change and Migratory Species:
Regional Approach, Practical Measures and Examples**
20 - 21 February 2017
Bonn, Germany

CMS policy response I

- 1997: Recommendation 5.5
 - set up Scientific Council Working Group, tasked with review of scientific work and building network
- 2005: Resolution 8.13
 - Requests the ScC to
 - set research priorities
 - identify most threatened species
 - consider changes in species distribution
 - produce guidance for adaptation measures
 - encourage collaborative research projects on the effects of CC on MS
 - Calls on Parties to implement adaptation measures



Studies and publications

- Climate Change and Migratory Species (2005)
- Migratory Species and Climate Change: Impact of a Changing Environment on Wild Animals (2006)
- Indicators of the Impact of Climate Change on Migratory Species (2008)



- 2008: Resolution 9.7
 - uncertainty should not stop action
 - identify most threatened species (with priority on App. I species)
 - Design and implement adaptation strategies
 - Consider impacts of CC mitigation and adaptation activities
 - technical & financial assistance to SIDS & developing countries



Implementing Resolution 9.7: the way ahead

- ZSL research project: preliminary assessment of vulnerability to climate change of CMS Appendix I species
- Technical Workshop on the “Impact of Climate Change on Migratory Species: the current Status and Avenues for Action” (Arles, France, June 2011)
- Cooperation with other bodies (ZSL, IUCN) and other MEAs (CITES, CBD, Bern and Ramsar Conventions)



- 2011: Resolution 10.19
- *Management and monitoring of species populations*
 - Promote a standardized methodology for evaluating susceptibility of species to CC
 - Identify Appendix I and II listed species that are most susceptible to CC
 - Prepare SSAPs for most vulnerable Appendix I species
 - Ensure that monitoring is maintained, using comparative methods
 - Develop guidelines on measures needed to assist migratory species adapt to CC
 - Continue to identify indicator species as a proxy for wider MS assemblages

➤ *Critical sites and ecological networks*

In relation to the implementation of Res. 10.3 on ecological networks

- Ensure that sites are sufficiently large, holding a variety of habitats and topography
- Strengthen the physical and ecological connectivity between sites, permitting dispersal and colonization when species distribution shift
- Consider the designation of seasonal protected areas in areas where MS occur at critical stages

- *Climate change mitigation and adaptation, and land use planning*
 - Evaluate and reduce the additional impacts on migratory species resulting from changes in human behaviour due to CC (the so-called “tertiary effects”) eg, increased shipping in the Arctic
 - Promote the development of appropriate environmental safeguards and SEA and EIA for mitigation and adaptation measures (windfarms, etc)
 - Develop environmental sensitivity and zoning maps to prevent impacts of mitigation projects on migratory species

➤ *Capacity building*

- Pursue capacity building initiatives to support implementation of the CMS climate change mandate
- Promote the publication of scientific literature in order to ensure that Parties have access to the best available scientific information on which to base CC related decisions relevant to migratory species



➤ *Cooperation and implementation*

- Establish the position of COP-appointed councillor for CC
- CMS Focal Points and Scientific Councillors to provide support and to develop joint solutions with national UNFCCC Focal Points
- Promote synergies and joint projects with CBD, UNFCCC, UNCCD, the Ramsar and Bern Conventions, the IWC and other international instruments
- Include conservation measures in national climate change strategies, NBSAPs and other relevant processes



April 2014 Costa Rica UNEP/CMS Technical Workshop: Towards a CMS Programme of Work on Climate Change

- Developed a draft “Programme of Work on Climate Change and Migratory Species”
- Discussed elements of a COP11 resolution on CC, including an interpretation of the CMS definition of “favourable conservation status” in the light of CC

November 2014 CoP11 Quito, Ecuador

Resolution 11.26 Adopted “Programme of Work on Climate Change and Migratory Species”

The Programme of Work

- A holistic approach
- Global level
- Focusses on the key problems and issues
- Requires resources
- Require partnership and coordination

The Programme of Work - Contents

- Measures to facilitate species adaptation in response to climate change
- Vulnerability assessment
- Monitoring and research
- Climate change mitigation, human adaptation, and land use planning
- Knowledge exchange and capacity building
- Cooperation and implementation

Challenges to deliver the PoW

- Challenge 1 To communicate: science-policy
- Challenge 2 To take a holistic view
- Challenge 3 To use existing science
- Challenge 4 To prioritise
- Challenge 5 Focus on and to take action

Developing a coordinated approach

- A new way of conservation thinking, working and delivering in partnership?
- Needs resources
- Develop a common set of priorities
- Need examples of good practice and successes
- Communication to governments