

Considerations of Great Bustard reintroduction in Poland



Leszek Jerzak, Olaf Ciebiera
University of Zielona Góra

Distribution of Great Bustard in Central Europe

● Distribution of the European population from 1/2000 till 5/2013 based on 60.000 observation points

Data source:

Langgemach et al. (Germany)

Lóránt et al. (parts of Hungary, Romania and Serbia)

Raab et al. (Austria, parts of Hungary, Slovakia and Czech Republic)



1:5.500.000

Map preparation:
Technisches Büro
für Biologie
Mag. Rainer Raab

Background data:
Globe 1990



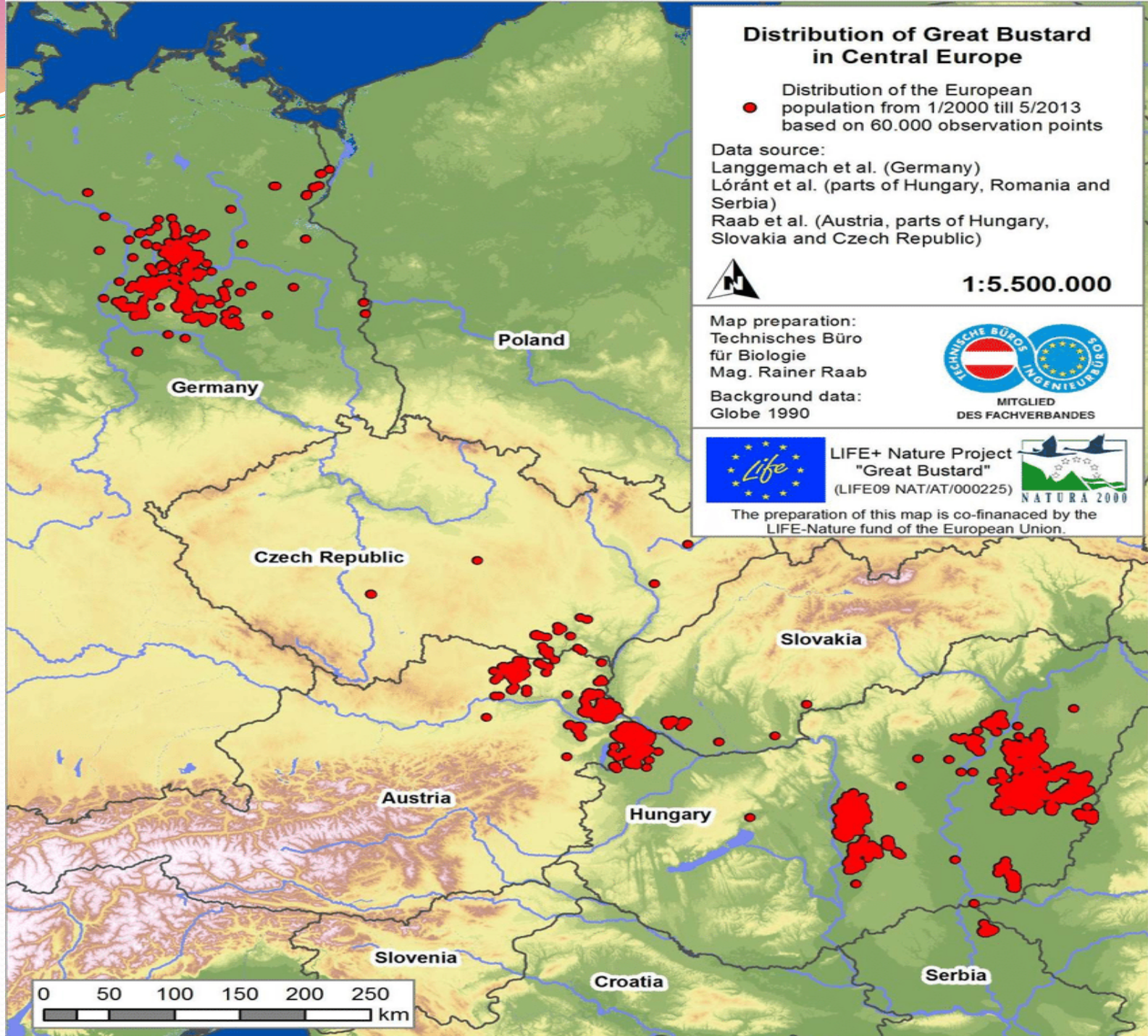
MITGLIED
DES FACHVERBANDES

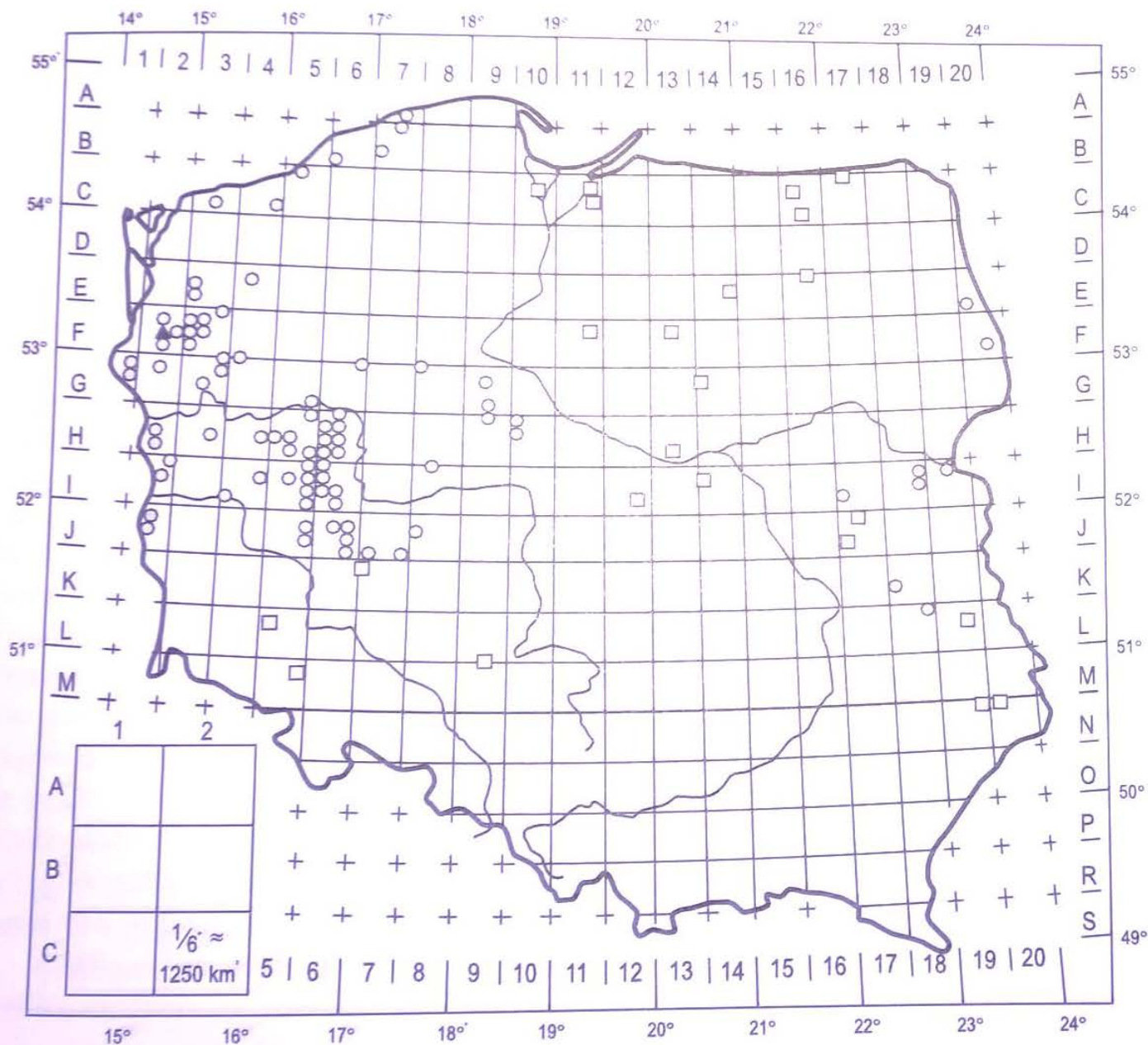


LIFE+ Nature Project
"Great Bustard"
(LIFE09 NAT/AT/000225)



The preparation of this map is co-financed by the
LIFE-Nature fund of the European Union.





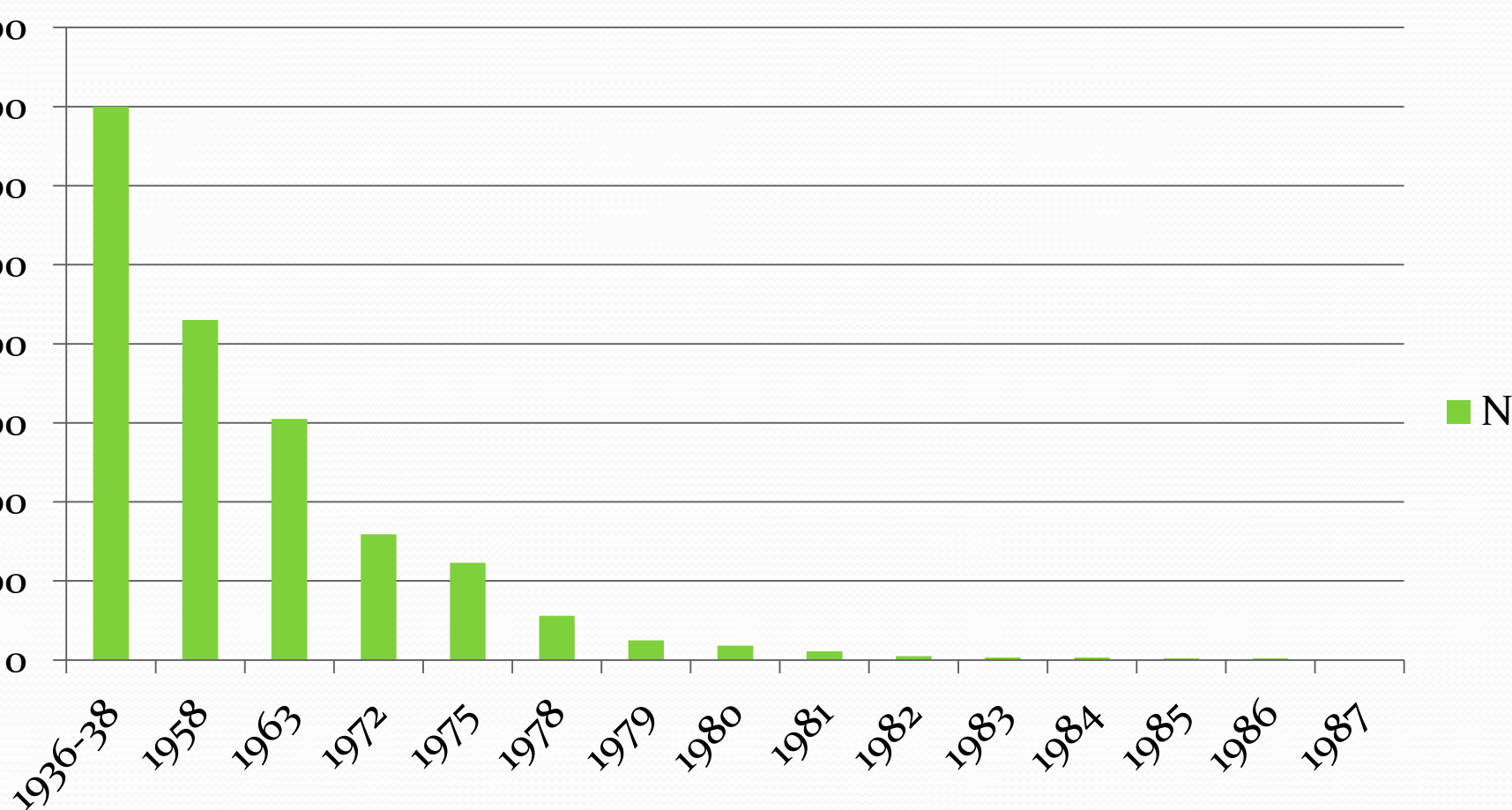
□ przed 1900 rokiem

○ w latach 1900-1985

▲ w 1986 roku
ostatnie stanowisko lęgowe

Number of the Great Bustard in Poland in the breeding period (Bereszyński 2000)

N



History

- 19th C. – occurred within the borders of the Polish state on the whole territory.
- In the first half of the 20th C. Great Bustard was closely connected with the landscape of the Polish lowland.
- In 1936-1938 y. – occurred mainly: Wielkopolska (Greatpoland), Pomorze Zachodnie (West-Pomerania), Ziemia Lubuska (Lubuskie Land), Lublin province, Dolny Śląsk (Lower Silesia).
- In 1963-1975 y. – only on the area of the SW from Poznań and in the surroundings of Piry & Słubice.
- The last brood was found at Parnica, Pomorze Zachodnie (W Pomerania), in 1986 y.

History

- 1974-1980 y. – Experimental Station of the Dep. Zoology Agricultural University of Poznań in Siemianice (18 ha).
- 32 birds (24 from Polish population)
- 1981-1996 y. – Station in Stobnica.
- 4 birds – last died in 1989. End of Polish population.
- 1989-1996 y. – 3 birds from E. Germany.



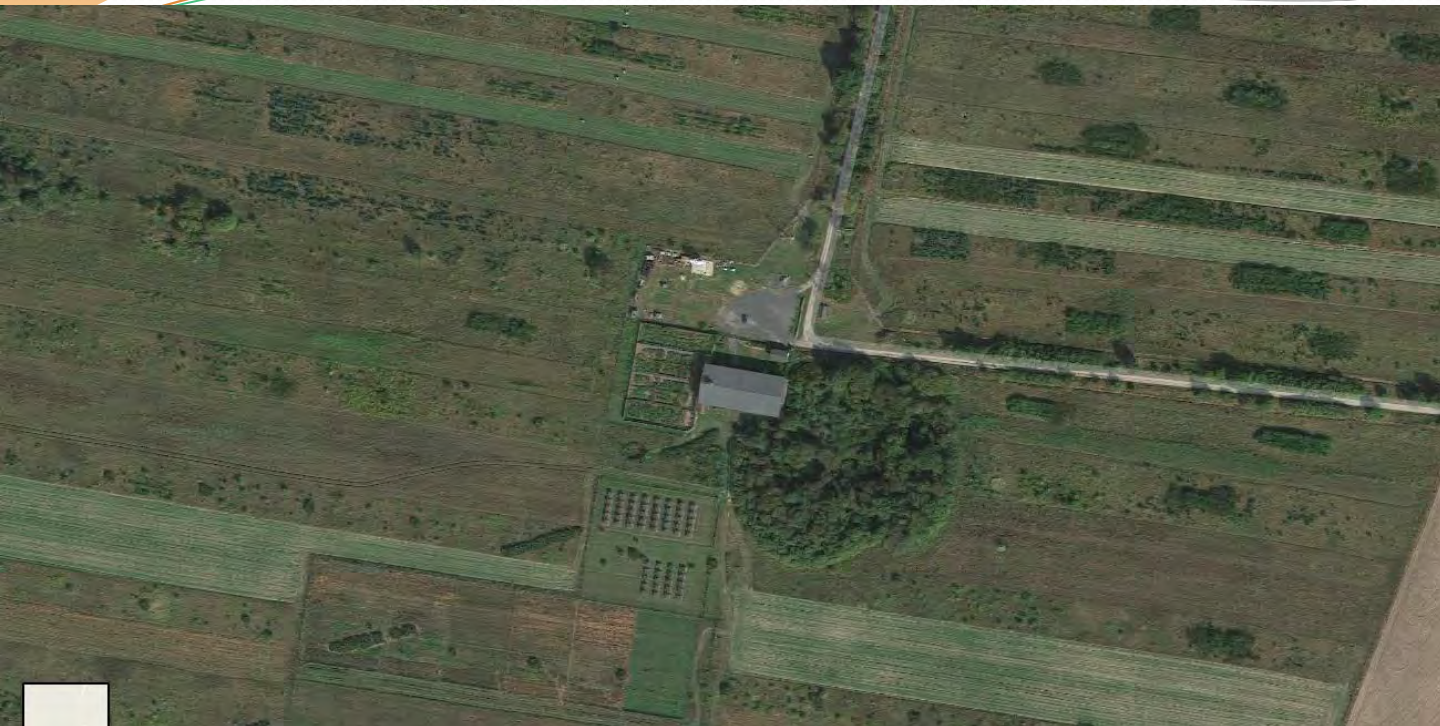
ROAD MAP

- Step 1 – flock of birds
Since 2018 y.
- Step 2 – Great Bustard - friendly habitat management
Since 2019 y.

Step 1



- Funding: *General Directorate of State Forest in Warsaw (Warszawa).*
- Cooperation:
 - Regional Directorate of State Forest in Zielona Góra
 - Forest District in Świebodzin,
 - Incubation and breeding station for the Great Bustard ZAGRODOWA HODOWLA ZWIERZYN Y ŁOWNEJ „ZAGÓRZE,, (Lubuskie Land) – *in prep.*
- Feasibility study – *in prep.*
- Source of eggs or chicks: Russian population (40 birds in first year).



Step 1

- Education: ZOO in Warsaw & Station „Zagórze”
- Genetical studies: Gens' Bank in Kostrzyca (State Forest)
- Steering Committee.
- Scientific Care:
 - University of Zielona Góra,
 - Poznań University of Life Sciences.



Step 2

- 2020-2030 y.
- Founds:
 - LIFE+
 - National Found for Environmental Protection and Water Management in Warsaw (Warszawa)
 - State Forests

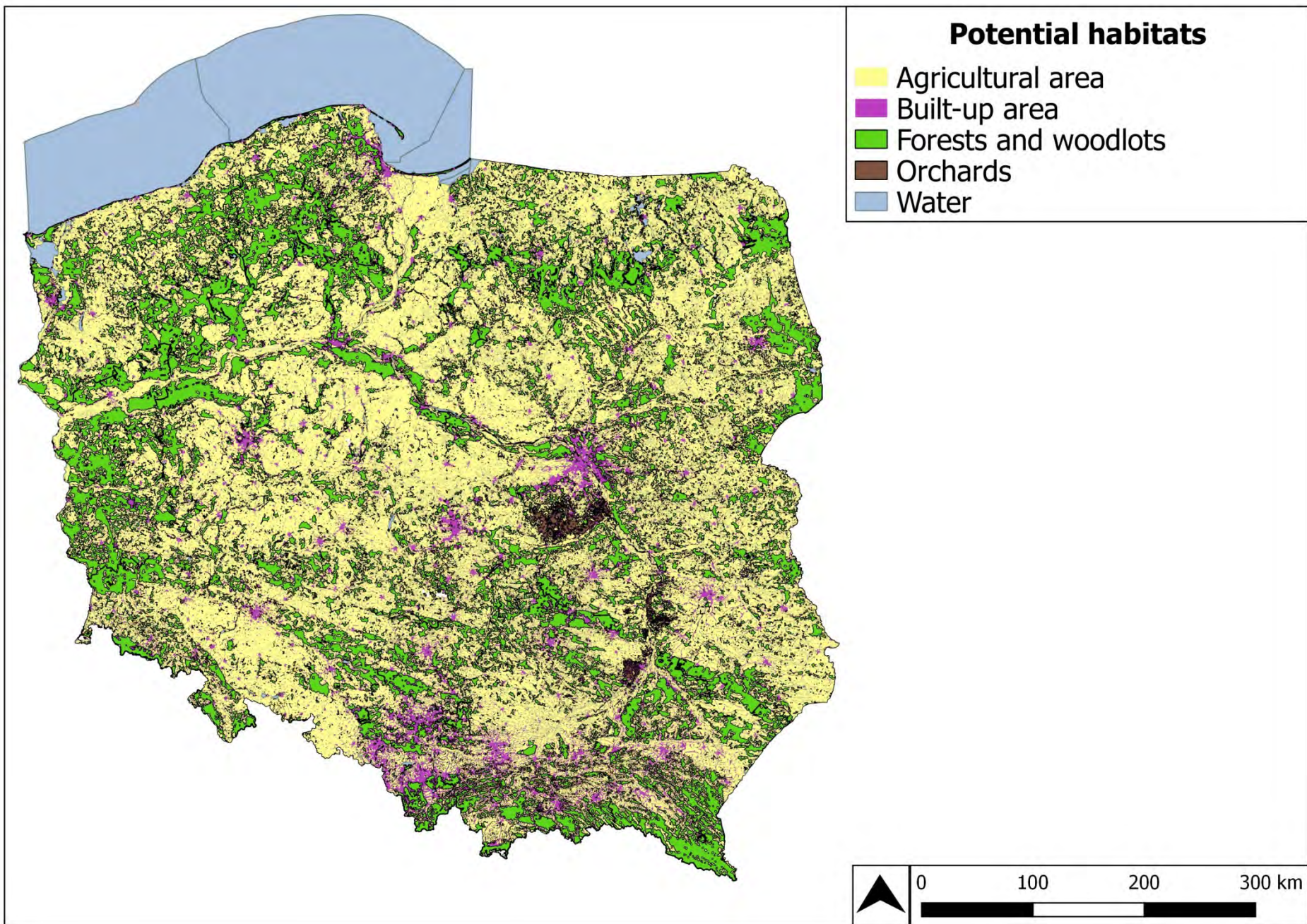
Step 2

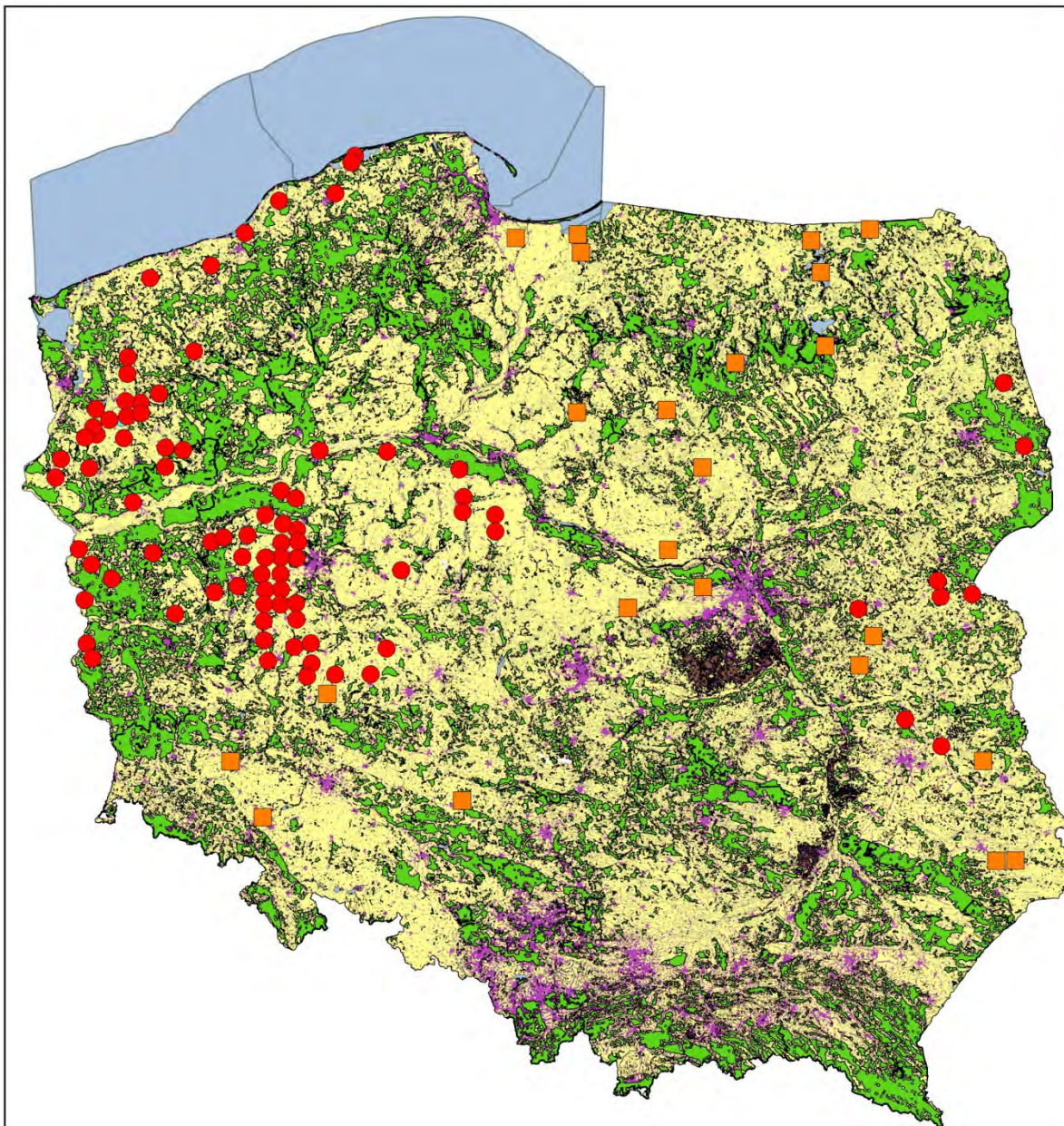
- Choice of places with friendly farmland for Great Bustard
- Cooperation with farmers
- Agri-environmental Program
- Control of predators (fox, dog) in cooperation with hunters.



Great Bustard-friendly management of suitable habitats

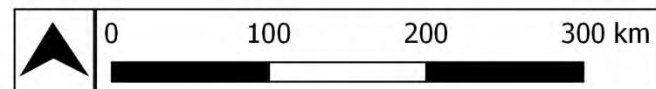
- Mosaic landscape with fallows, cereal fields, herbaceous plants (lucerne, oilseed rape etc.)
- Low level of human disturbance
- Farming activities should be adapted to the breeding phenology (agri-environmental programme)

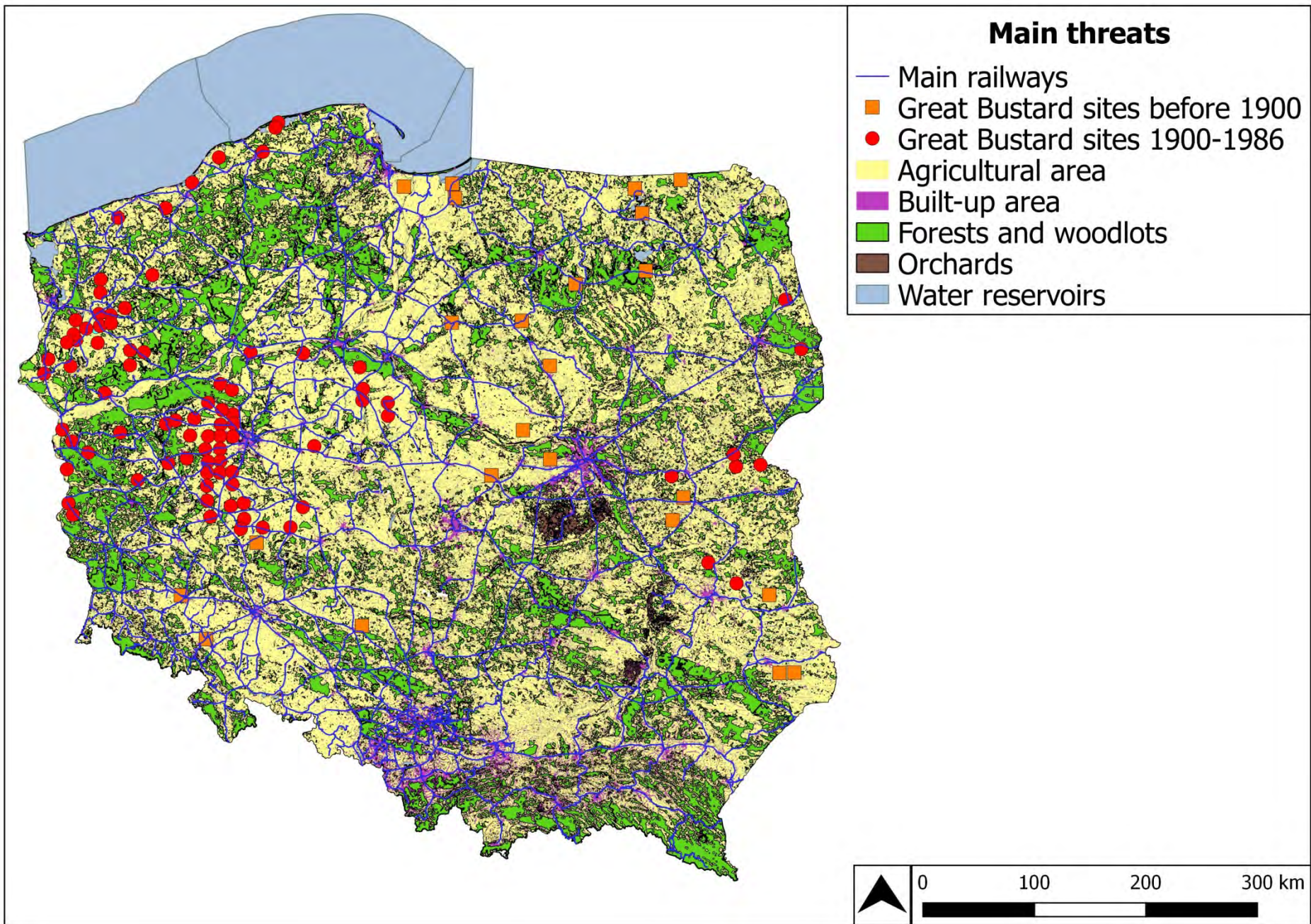


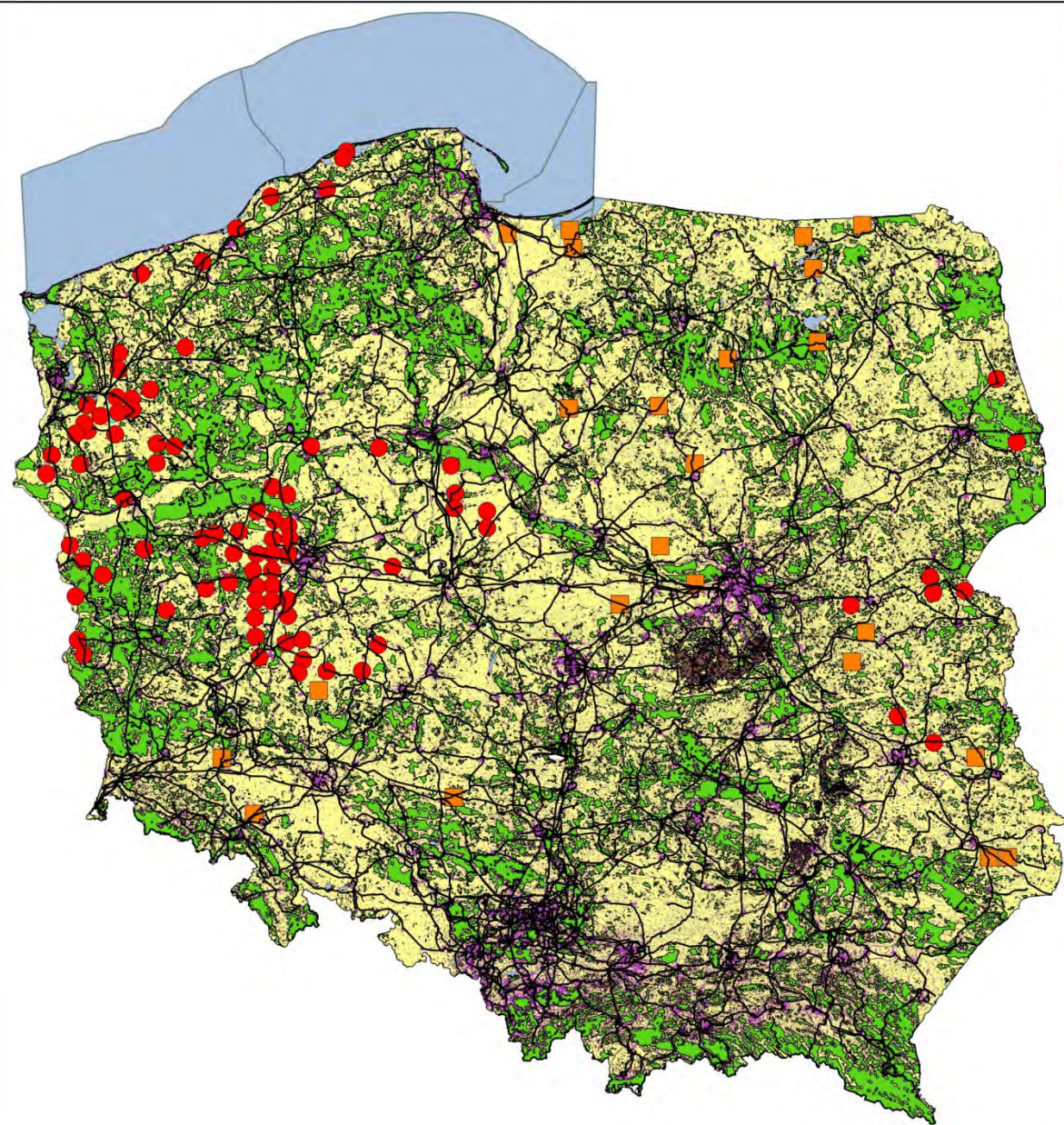


Great Bustards sites

- Great Bustard sites before 1900
- Great Bustard sites 1900-1986
- Agricultural area
- Built-up area
- Forests and woodlots
- Orchards
- Water reservoirs

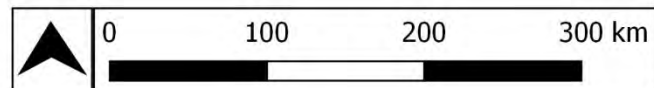


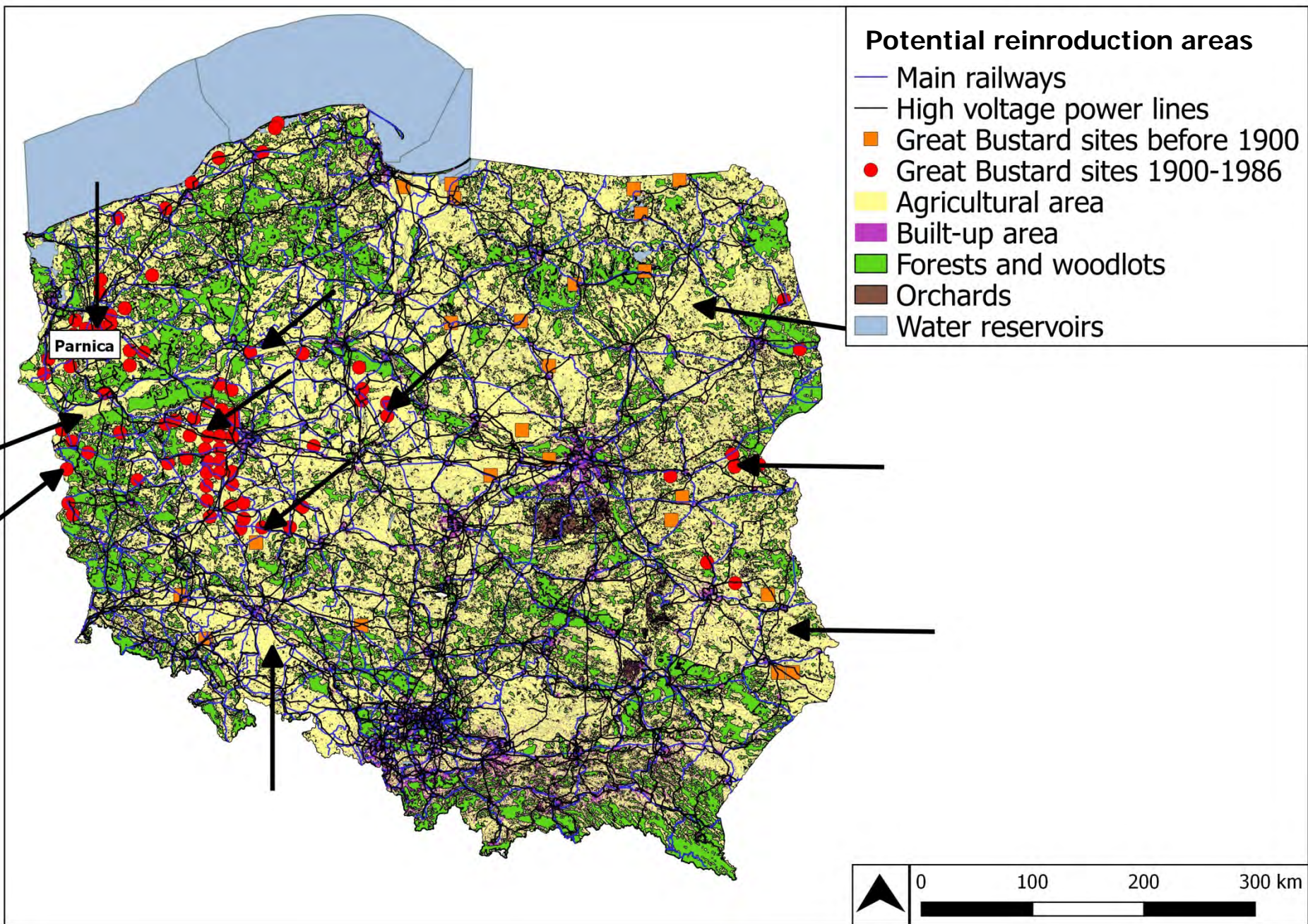


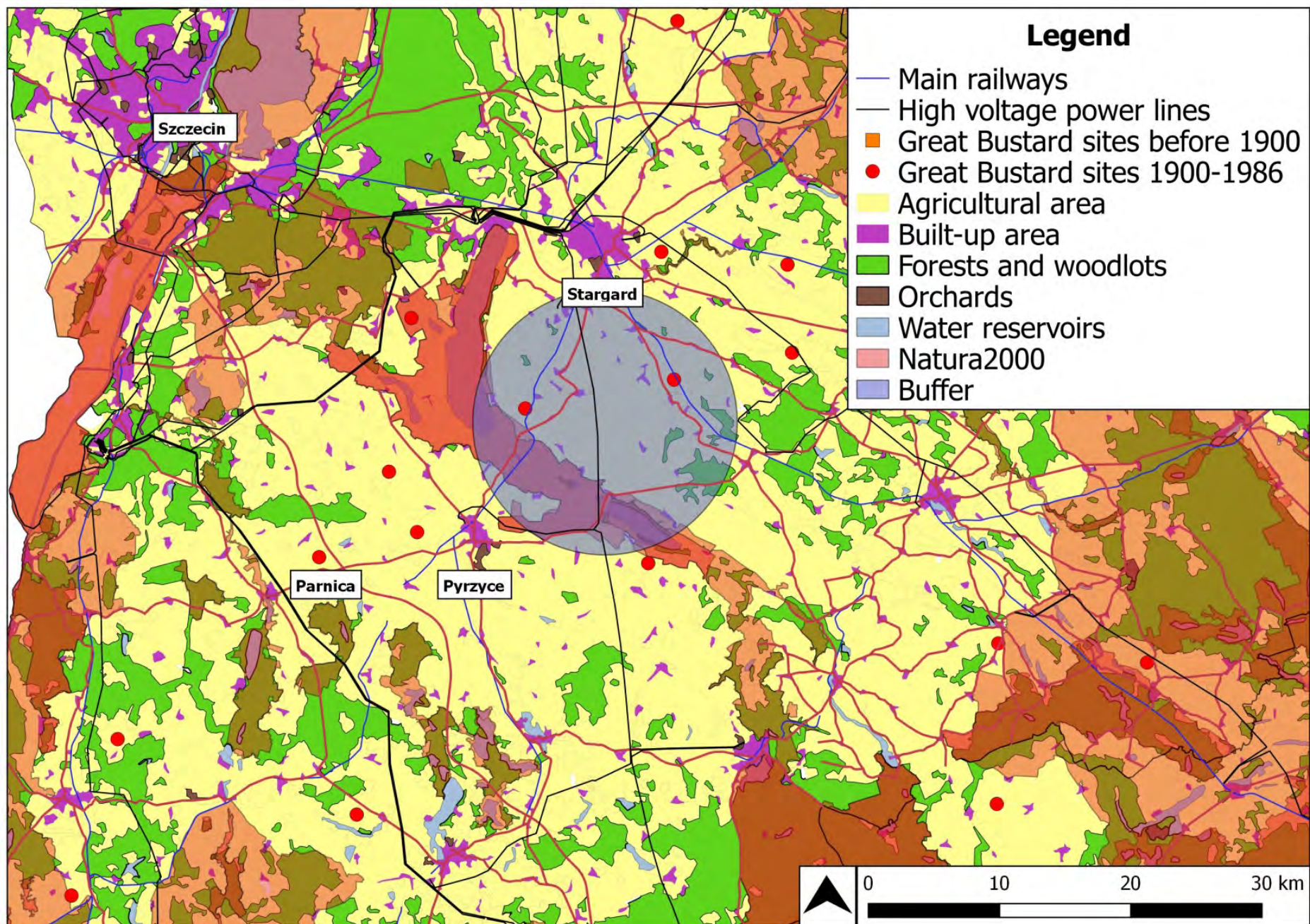


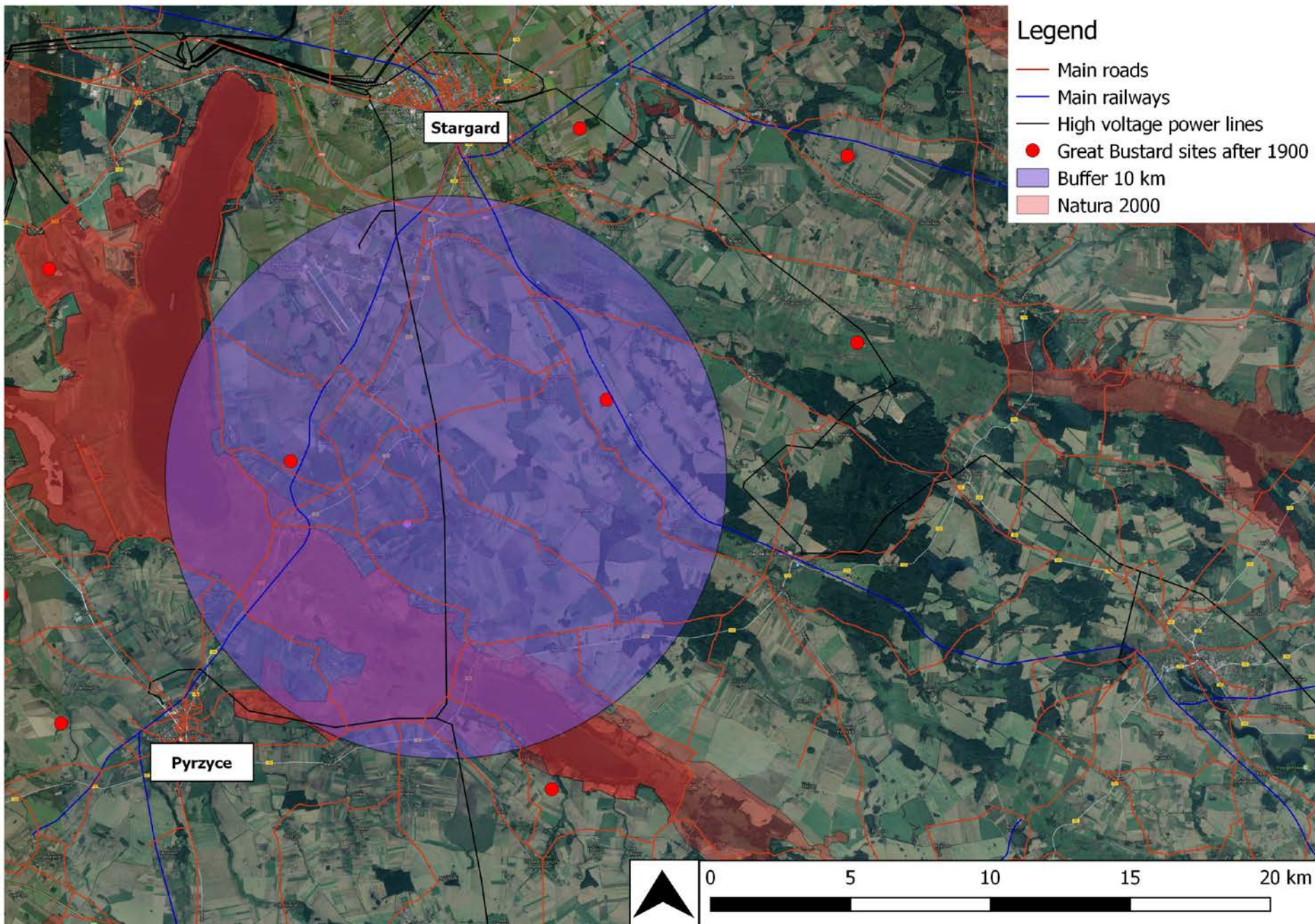
Main threats

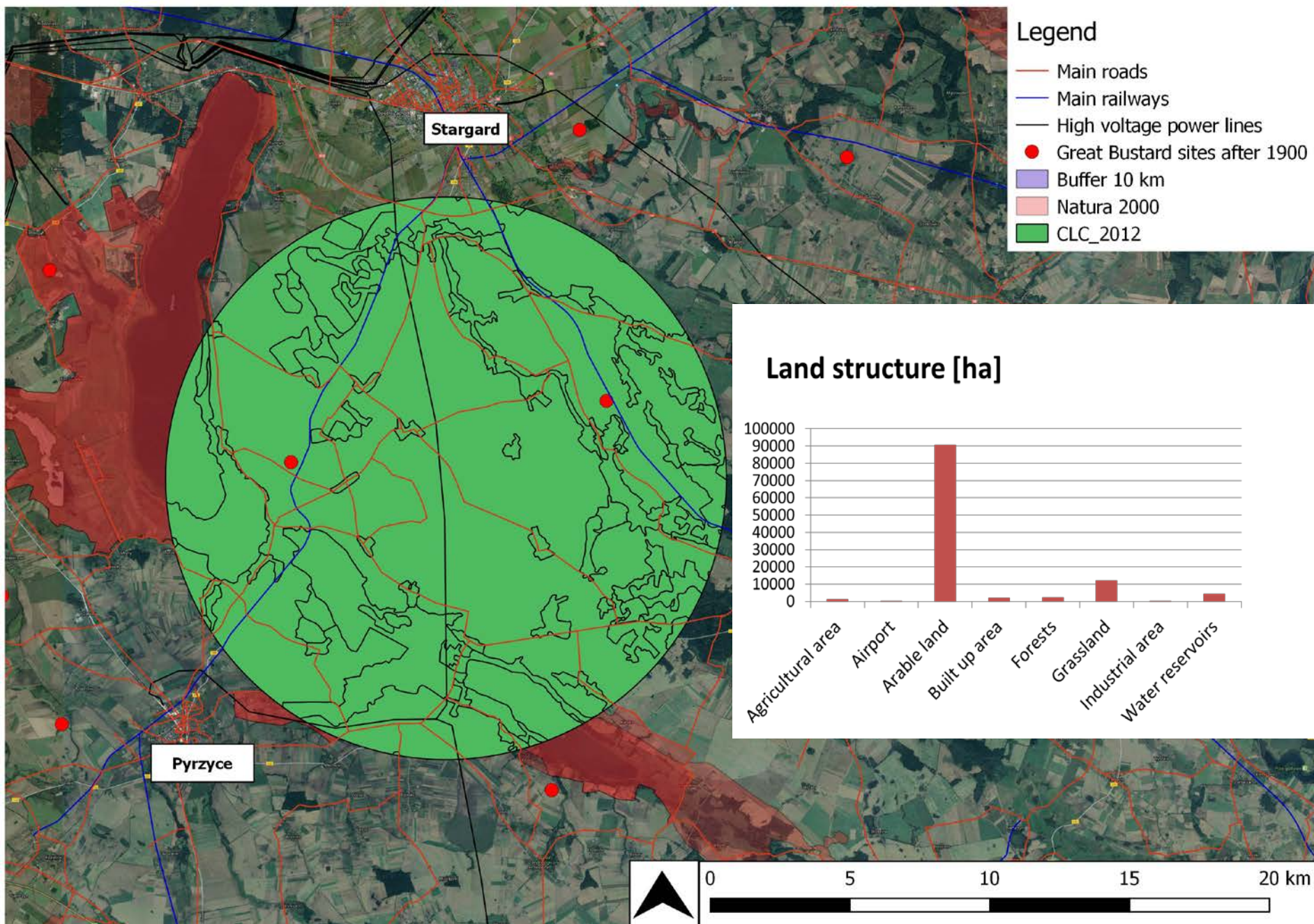
- High voltage power lines
- Great Bustard sites before 1900
- Great Bustard sites 1900-1986
- Agricultural area
- Built-up area
- Forests and woodlots
- Orchards
- Water reservoirs











Thank you

