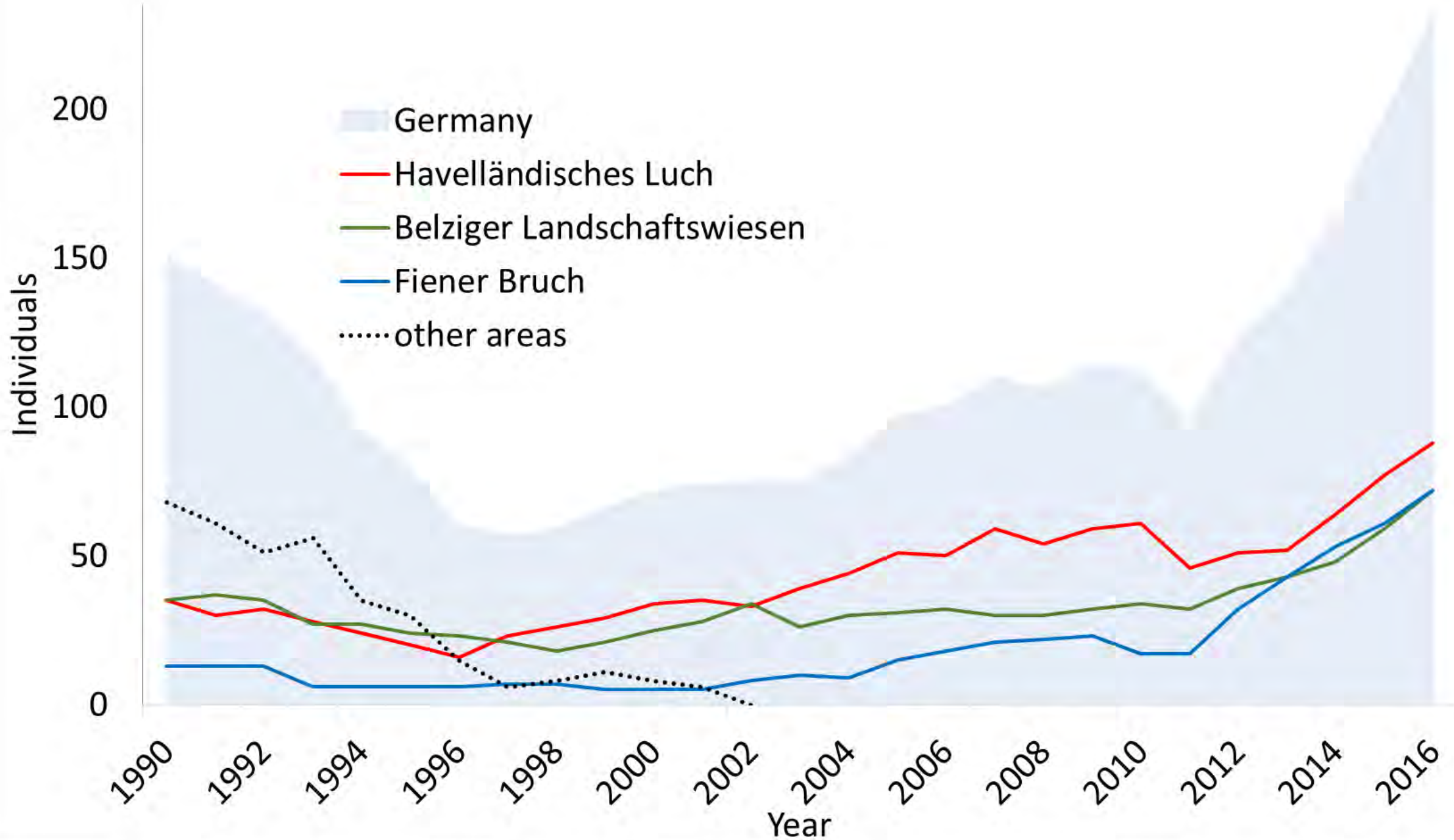


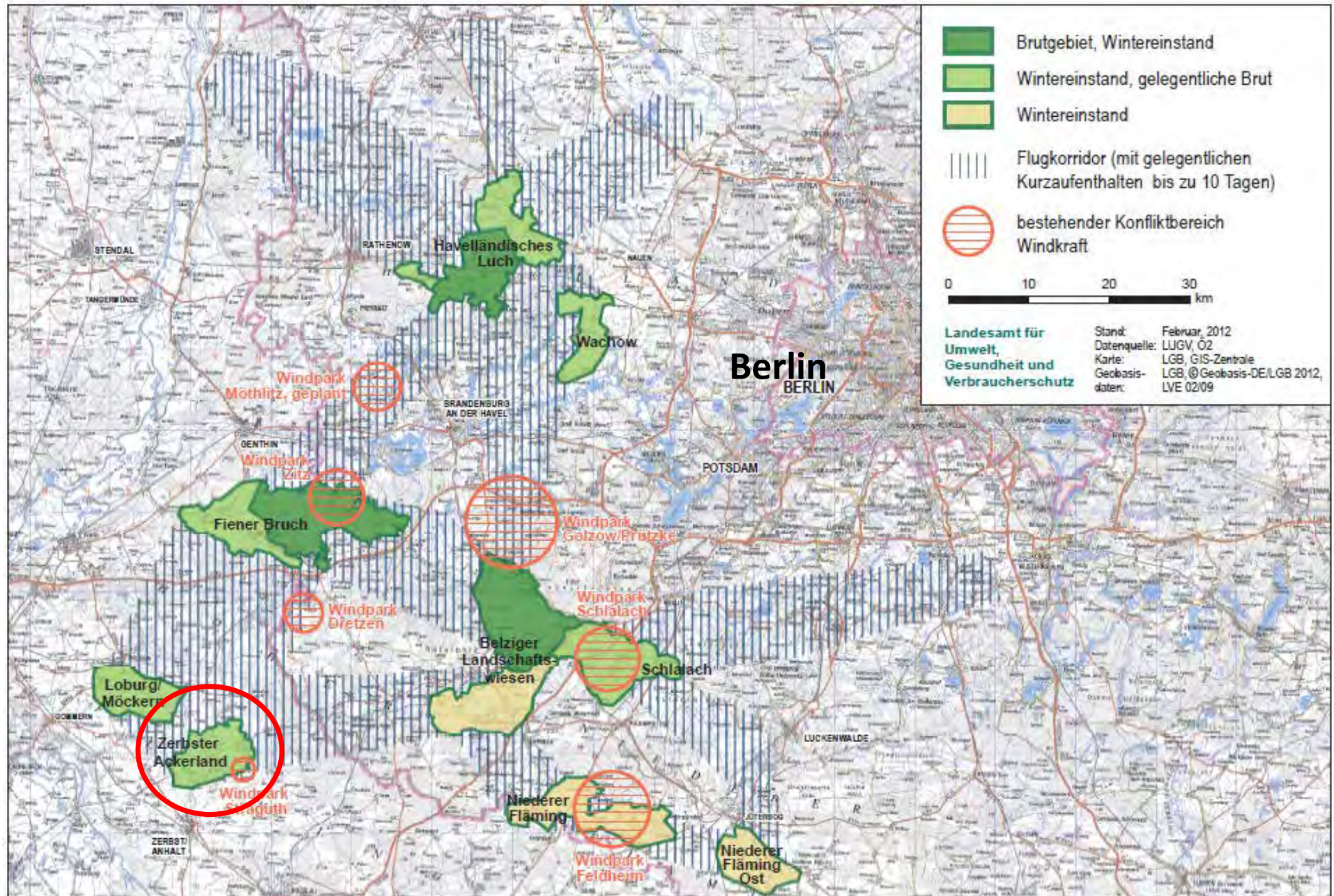
Restoration of an additional Great Bustard area in Germany?

Chances and obstacles revealed by a feasibility study



A. Staar







A. Staar



A. Staar

- SPA area: 6.207 ha
- Study area:
 - 2.021 ha (*Steckby*)
 - 3.272 ha (*Schora*)
 - 5.293 ha

- André Staar

Zerbst



Biological suitability

→ **Extinction causes** and **threats** should be identified and eliminated

→ Suitable habitat should contain all **biotic** and **abiotic needs** through space and time and for all life stages

Threats

Primary !

Factors which affect the suitability of a habitat

- Agricultural intensification
- Fragmentation
- Human disturbance



Secondary

Factors which cause the loss of individuals/ clutches (mortality factors)

- Farming
- Predation
- Collision
- Weather



Habitat criteria

- Based on essential **habitat requirements** and **primary threats**
- Provide a minimum standard of arable land as Great Bustard habitat

Space

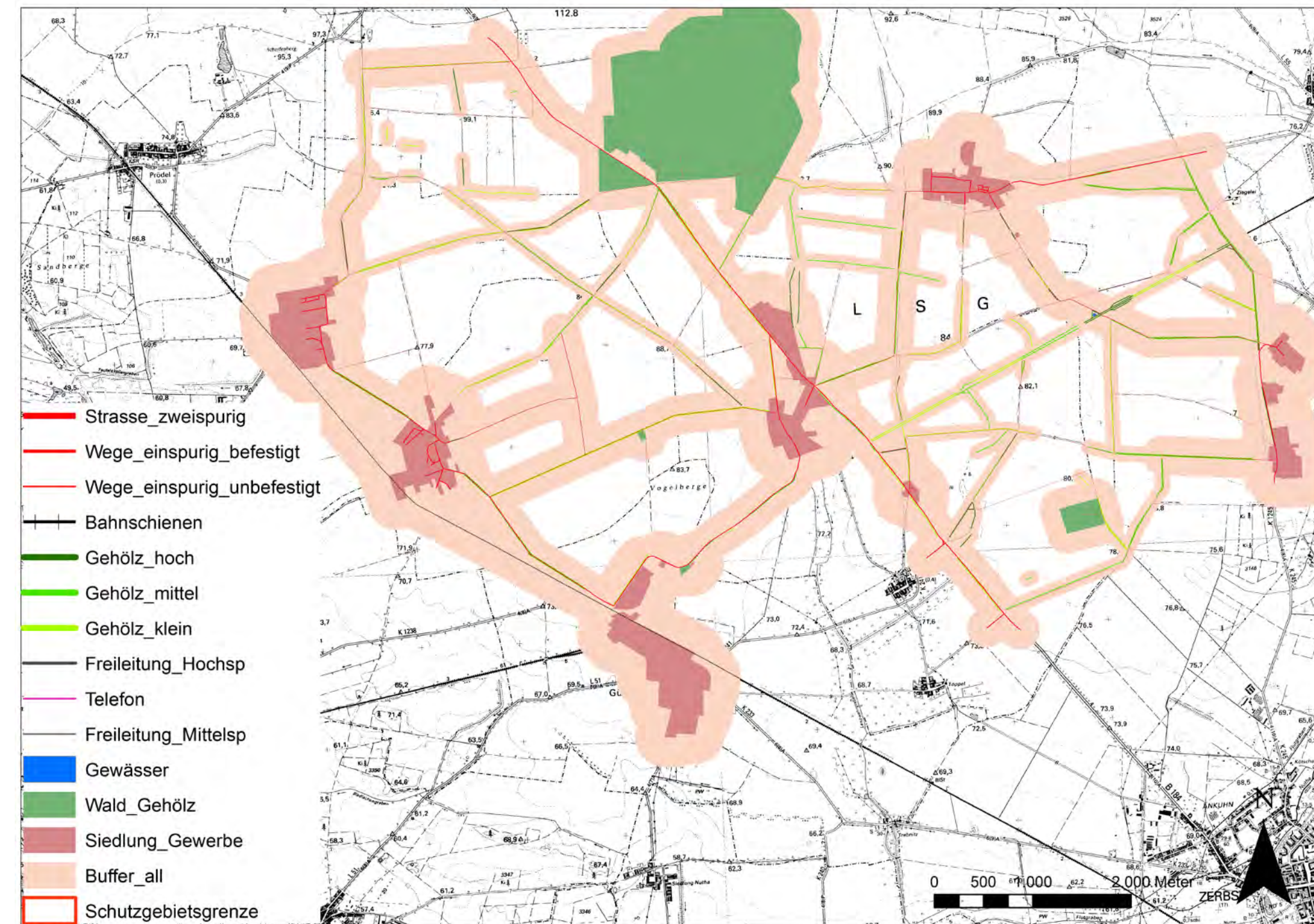
Potential habitat?

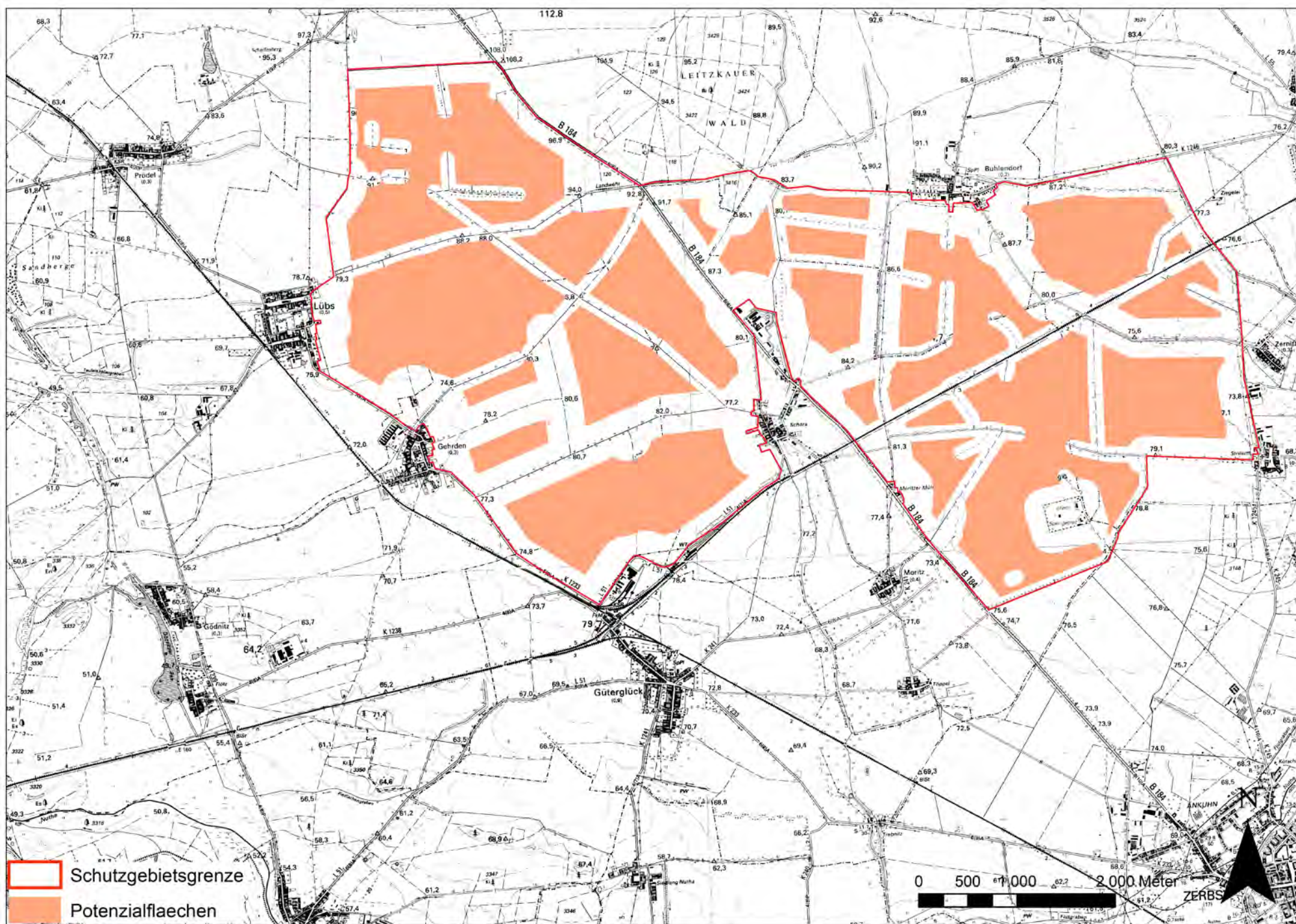


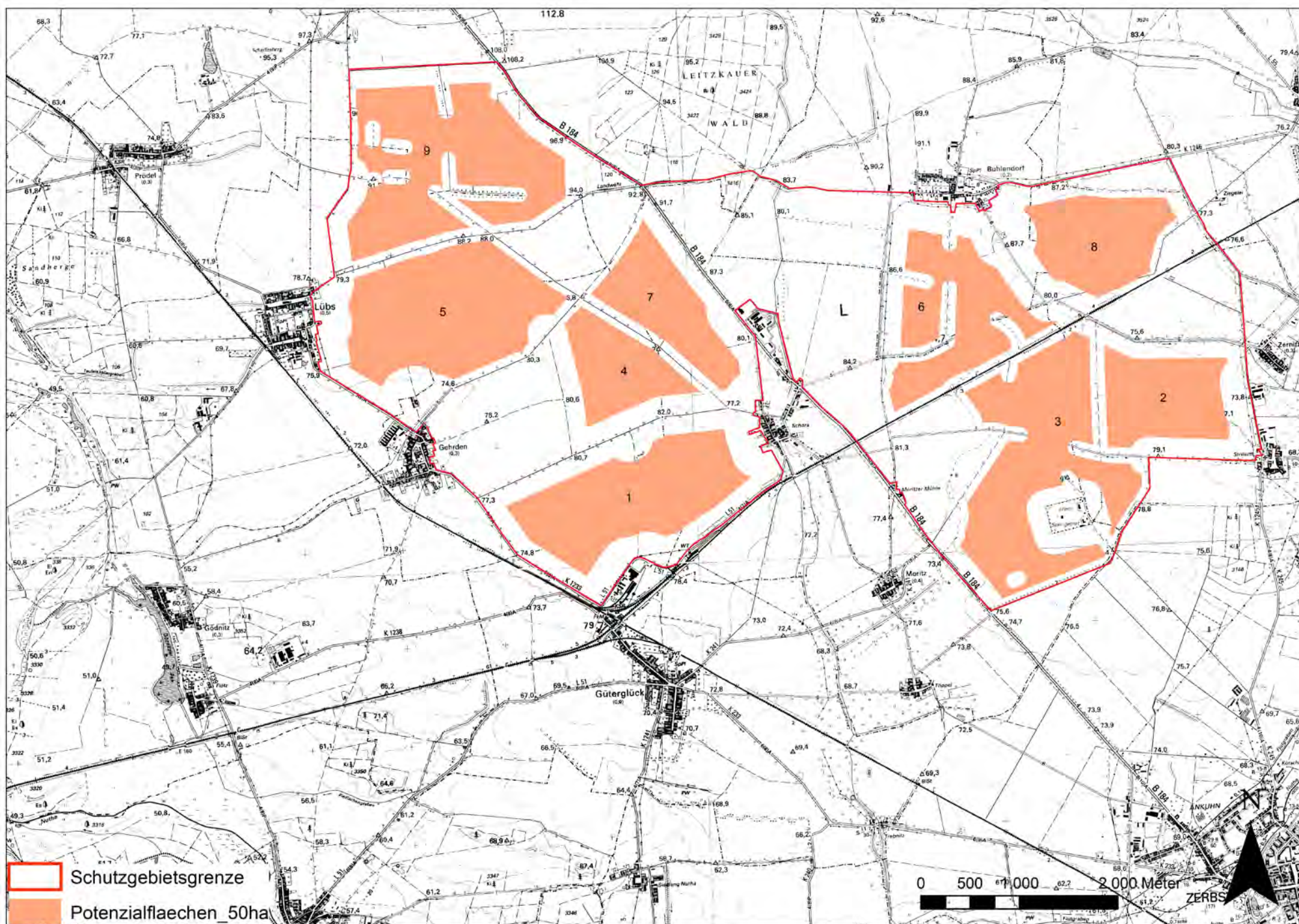
Food

Potential habitat?









Potential habitat

~ 2.250 ha

= 42 % of study
area

=36 % of SPA
area

Habitat criteria

- Based on essential **habitat requirements** and **primary threats**
- Provide a minimum standard of arable land as Great Bustard habitat

Space

Potential habitat!

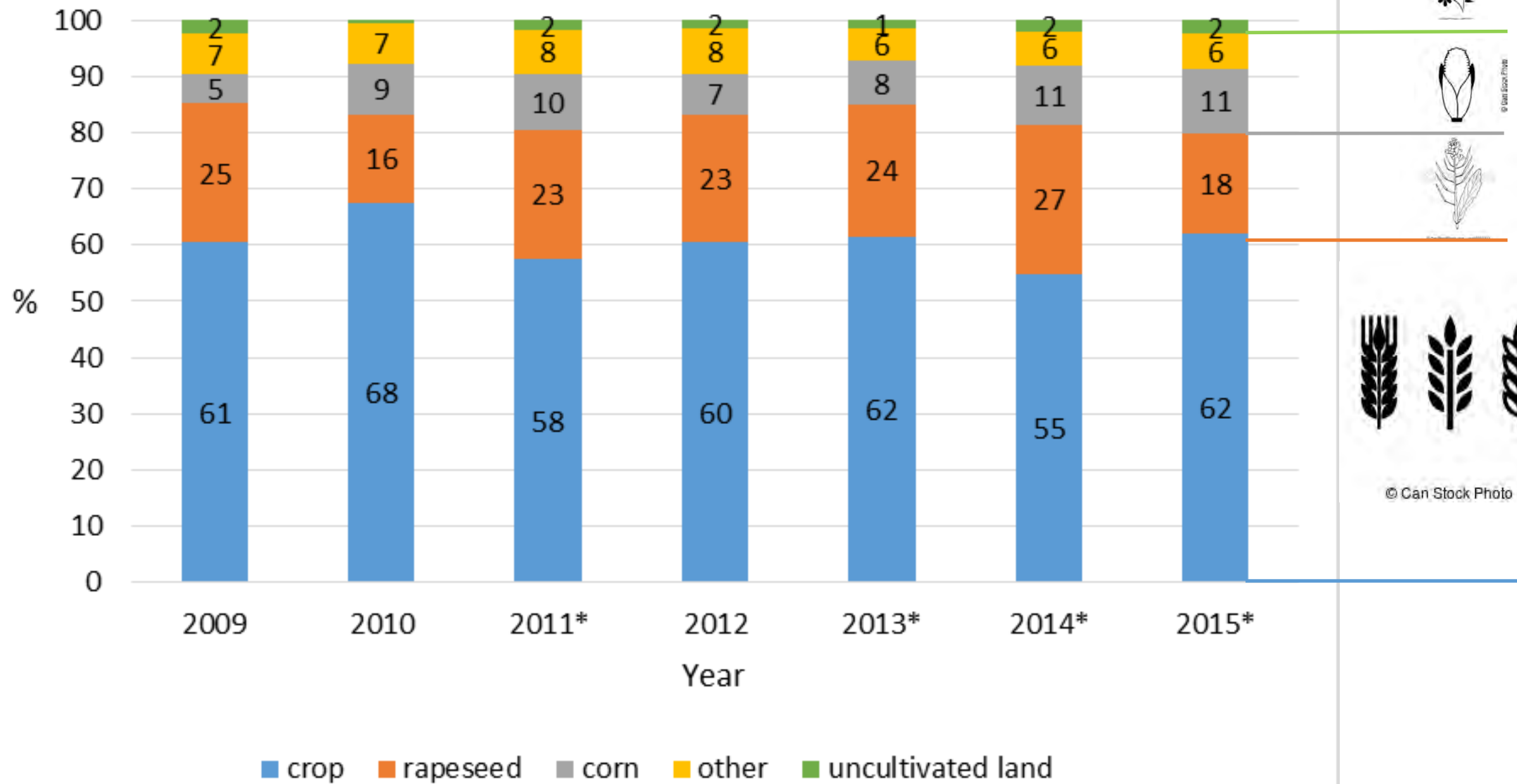


Food

Potential habitat?



Results



Habitat criteria

- Based on essential **habitat requirements** and **primary threats**
- Provide a minimum standard of arable land as Great Bustard habitat

Space

Potential habitat!



Food

Potential habitat?



Thank's for listening

