

WILDLIFE MOVEMENT SURVEY

WESTERN REGIONAL ROAD DEVELOPMENT PROJECT



ABOUT THE PROJECT

- ◉ The Government of Mongolia has received a grant and loan from Asian Development Bank to support the construction of several section along 748km road from Yarant at the border of People's Republic of China through Khovd and Ulgii to Ulaanbaishint at the border of Russian Federation
- ◉ The road is part of the Asian Highway network, Route 4 (AH4, 6,024 km) and is a designated Central Asian Regional Economic Cooperation Corridor 4a, which links Novosibirsk city of Russia with Karachi seaport in Pakistan.
- ◉ Tranche 1 of the road that connects PRC to Khovd provincial center (300 km) has opened to traffic on October 22, 2014 after approval by the State Committee.

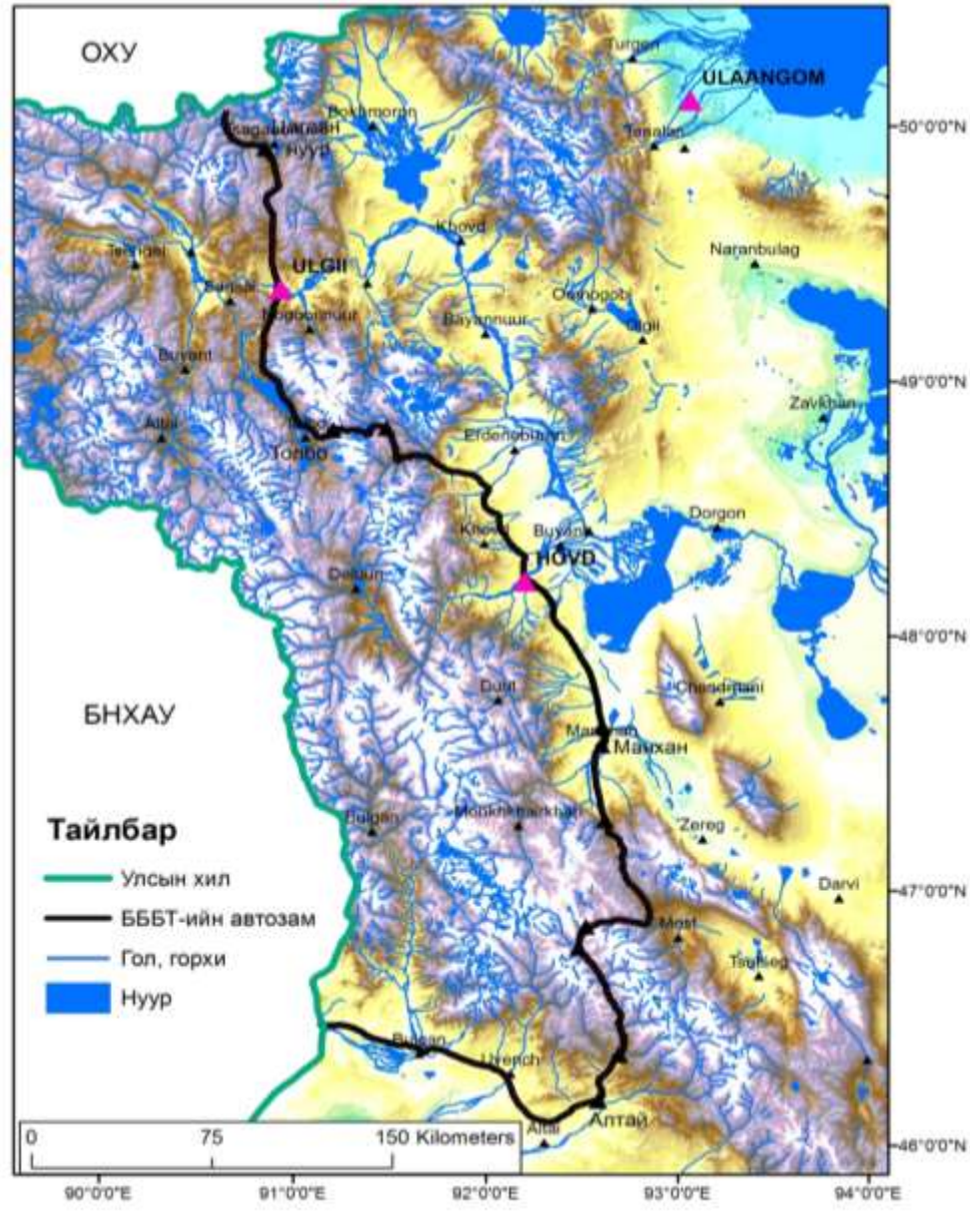
MAP OF ASIAN HIGHWAY NO.4

Figure 2: Asian Highway Network



Source: ADB

ROUTE MAP



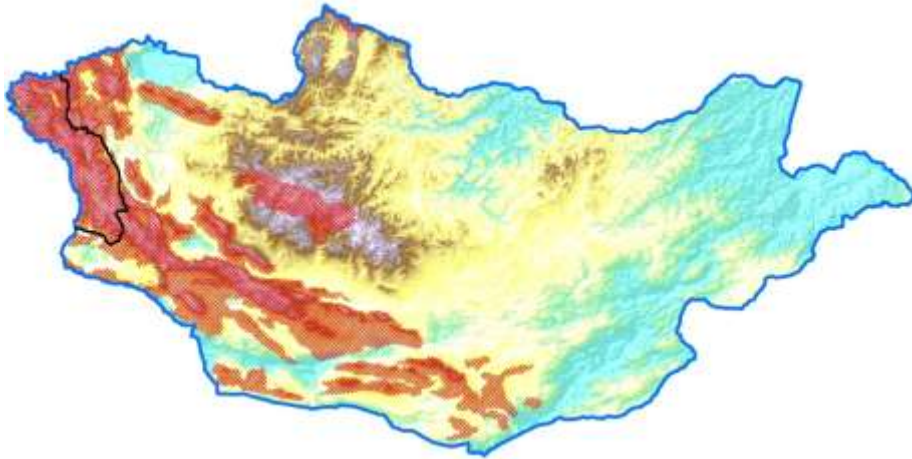
ENVIRONMENTALLY SENSITIVE POINTS

- ◉ Bodonch canyon
- ◉ Khavchig canyon
- ◉ Altay mountain range
- ◉ Depression of th Great Lakes

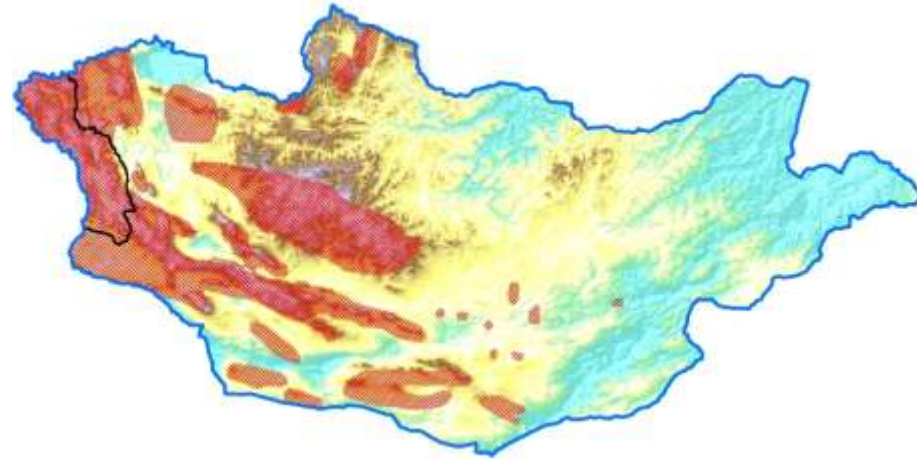
which are habitat to a number of rare species such as saiga, ovis ammon, snow leopard etc.

DISTRIBUTION OF WILDLIFE SPECIES

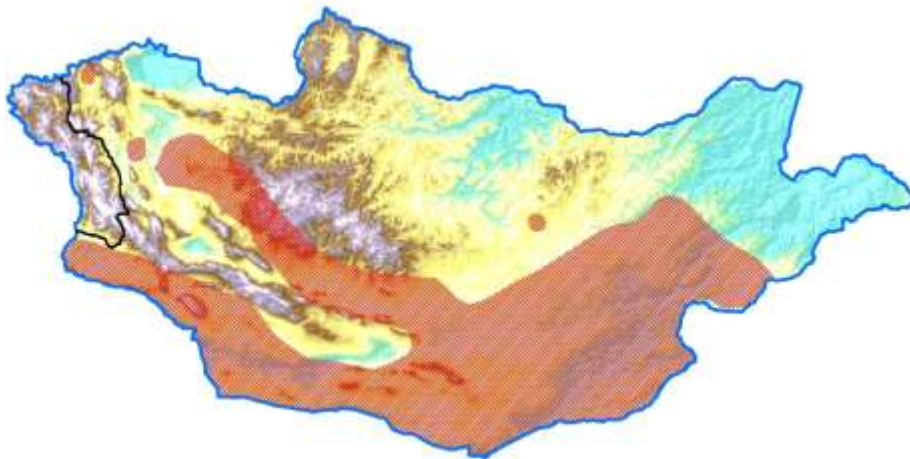
Snow leopard



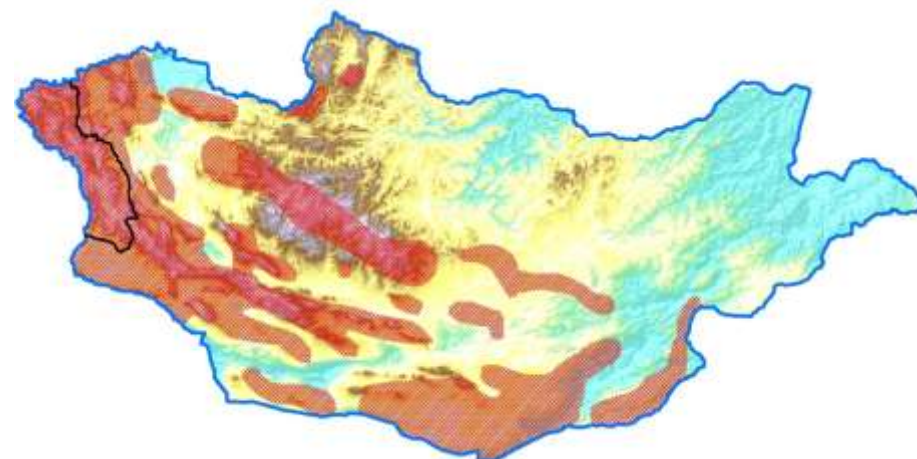
Ibex



Goitered gazelle



Argali sheep



CRITERION FOR SELECTION WILDLIFE CROSS POINTS

- ESIA and EMP
- Wildlife range
- Distribution of household
- Local topography
- Herder interview

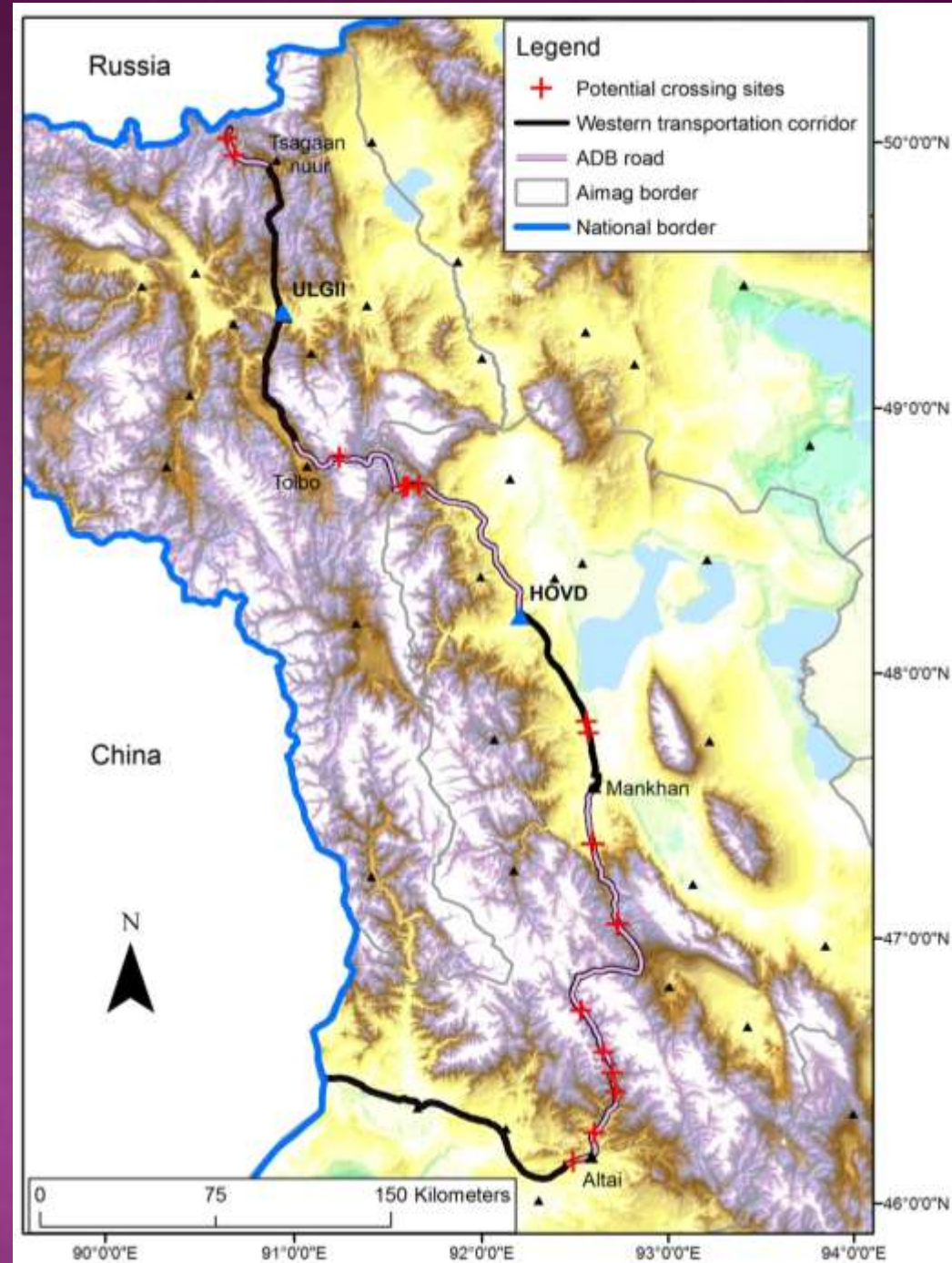
SURVEY APPROACH

- ◉ Observation
- ◉ Interviews
- ◉ Pursuit of trails
- ◉ Previous fauna reports

RECOMMENDED WILDLIFE CROSS POINTS

Wildlife species

- Snow leopard
- Ibex
- Argali sheep
- Goitered gazelle
- Saiga antelope



ID	Wildlife species	Latitude	Longitude	Elevation, m
Temeen Khuzee - Baga Ulaan pass (110.8 km)				
Site 1	Goitered gazelle	45.98864	92.42777	1516
Site 2	Ibex, argali sheep	46.10971	92.51797	1693
Site 3	Ibex, snow leopard	46.27478	92.59775	1932
Site 4	Ibex, snow leopard	46.34538	92.56447	2085
Site 5	Ibex, snow leopard	46.41640	92.49709	2251
Site 6	Ibex, snow leopard	46.56167	92.33870	2447
Baga Ulaan pass - Mankhan soum (103.3 km)				
Site 1	Argali sheep, ibex	46.73543	92.56011	2354
Site 2	Argali sheep, ibex- Khavchig canyon	46.90817	92.46162	2428
Site 3	Mongolian saiga	47.19217	92.25353	1753
Mankhan soum - Khovd aimag (83.3 km)				
Site 4	Mongolian saiga, goitered gazelle	47.60634	92.12658	1262
Site 5	Mongolian saiga, goitered gazelle	47.64701	92.10284	1293
Khovd aimag - Tolbo soum (163.9 km)				
Site 1	Argali sheep, ibex, snow leopard	48.41935	90.93569	1867
Site 2	Argali sheep, ibex, snow leopard	48.40641	90.87063	1952
Site 3	Argali sheep, ibex, snow leopard	48.40230	90.85270	1977
Site 4	Argali sheep, ibex, snow leopard	48.46631	90.46074	2625
Tsagaan Nuur - Ulaanbaishint (25.8 km)				
Site 1	Argali sheep, ibex	49.50969	89.52537	2234
Site 2	Argali sheep, ibex	49.56787	89.46545	2267

PROPOSED CROSS POINT DESIGN

- ◉ Wildlife crossing structures: slopes on 2 sides of the road embankment
- ◉ Erection of warning signage
- ◉ Speed bumps on both sides of the cross point

GOOD PRACTICES: OT-GS ROAD



**THANK YOU FOR
ATTENTION!!!**