

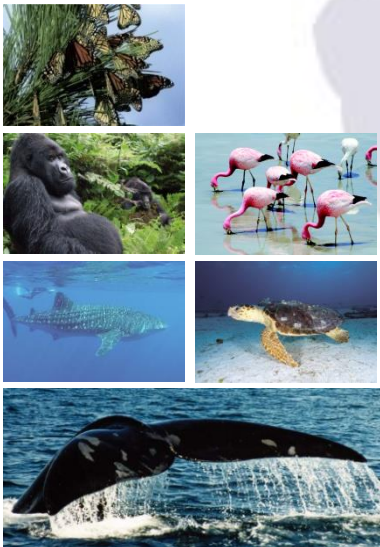
International Climate Initiative (IKI)

Marco Barbieri, UNEP/CMS Secretariat

**Workshop on Climate Change and Migratory Species:
Regional Approach, Practical Measures and Examples**

20 - 21 February 2017

Bonn, Germany



Introduction

- Launched by the German Government in 2008
- Administered by the German Federal Ministry for the Environment, Nature Conservation, Building and Nuclear Safety (BMUB)
- supports **climate and biodiversity projects in developing countries, emerging economies and transition states**
- open to a broad range of participants from Germany and abroad. It supports projects carried out by federal implementing agencies, NGOs, business enterprises, universities and research institutes, and by international and multinational organizations and institutions, e.g. development banks and United Nations bodies and programmes.



Eligible measures (I)

- IKI supports measures in the areas of
 - policy advice
 - capacity development
 - technology cooperation
 - Investment
- As well as concrete implementation of policies, strategies and concepts



Eligible measures (II)

Approaches eligible for support

- Support for the conceptual design and implementation of policy programmes and mechanisms;
- Policy advice on regulatory frameworks, the removal of barriers to strategy implementation and the development of country-specific solutions;
- Capacity development in public institutions, development of analysis and advisory capacity, capacity-building among private-sector stakeholders (industry, crafts, banks, investors, technology networks);
- Developing specific consultancy approaches and financing and business models (see also 2.6.1 Financing instruments);
- Supporting project development for major funding programmes and investors (pipeline development);



Eligible measures (III)

Approaches eligible for support (cont.)

- Actions in support of building consensus at national level (e.g. multi-stakeholder workshops);
- Supporting networks and transformation partnerships that bring together government institutions, towns and cities, think tanks, civil society and the private sector;
- Regional/international exchange of knowledge and experience;
- Financial cooperation (especially financing of investment, financial contributions to financial sector development, fiduciary holdings);
- Advice on, demonstration of and dissemination of technical innovations, exchange of information on climate protection technologies including the communication of best practices.



Support area I: Mitigation

- Implement nationally determined contributions (NDCs)
- implement additional emissions reductions
- develop cross-sectoral, long-term mitigation strategies
- capacity development in connection with measurement, reporting and verification

The call would focus on sectors that are particularly relevant to low-carbon development

- Renewable energies/energy efficiency
- Mobility/transport
- Resource efficiency, sustainable consumption and production.



Support area II: Adaptation to climate change

- Development and implementation of regional and national adaptation strategies
- Ecosystem-based adaptation (EbA) in water and land-use management

Support area III: Conservation, restoration and sustainable use of natural carbon sinks

- Restoration
- Sustainable business models
- Results-based financing
- Improve robust data systems



Support area IV: Biodiversity

- Raising awareness of and sensitising people to the importance of biological diversity and the services it provides (cf. Aichi Target 1);
- Integrating biodiversity into sector policies and political planning processes (cf. Aichi Target 2), including projects aiming to address the underlying causes of biodiversity loss;
- Eliminating or reforming incentives that are harmful to biodiversity and creating positive economic incentives for the conservation of biodiversity (cf. Aichi Target 3);
- Promoting biodiversity on agricultural land and the use of agricultural production methods that foster greater biodiversity (cf. Aichi Target 7);
- Protected areas (terrestrial and marine): integral implementation of the CBD Programme of Work on Protected Areas (cf. Aichi Target 11);



Support area IV: Biodiversity (cont.)

- Protected areas (terrestrial and marine): integral implementation of the CBD Programme of Work on Protected Areas (cf. Aichi Target 11); particular attention is paid to protecting the interests of local and indigenous communities and supporting the process of identifying and maintaining Ecologically and Biologically Significant Areas (EBSAs), including the high seas;
- Promoting integrated approaches to the restoration, connection and safeguarding of ecosystems in the landscape (not only in protected areas), including in urban areas, where these ecosystems make a significant contribution to human health, livelihoods and wellbeing;
- Projects that support capacity building in the context of the Intergovernmental Science-Policy Platform on Biodiversity and Ecosystem Services (IPBES).



Selection process (I)

Selection is based on a **two-stage procedure**

STAGE 1

BMUB normally issues an annual call for proposals (normally between February and June) along with the corresponding support information.



Project outlines to be submitted in English within a set deadline, using the project outline templates available on the IKI website.



BMUB evaluates all project outlines submitted to the IKI Programme Office in time.



The Ministry makes its selection based on the funds available and seeks the approval of other relevant ministries.



Applicants will be informed in writing of the evaluation result.



Selection process (II)

Selection is based on a **two-stage procedure**

STAGE 2

Applicants whose projects were selected will be requested in writing to submit a formal funding application and will receive the necessary templates and instructions.



BMUB evaluates the project applications received and then makes the decision on funding.

