

Enforcement Mechanisms for the Conservation of Migratory Large Mammals in Central Asia



THE PROBLEM: POACHING



© WCS

© Liz Bennett

THE PROBLEM: POACHING



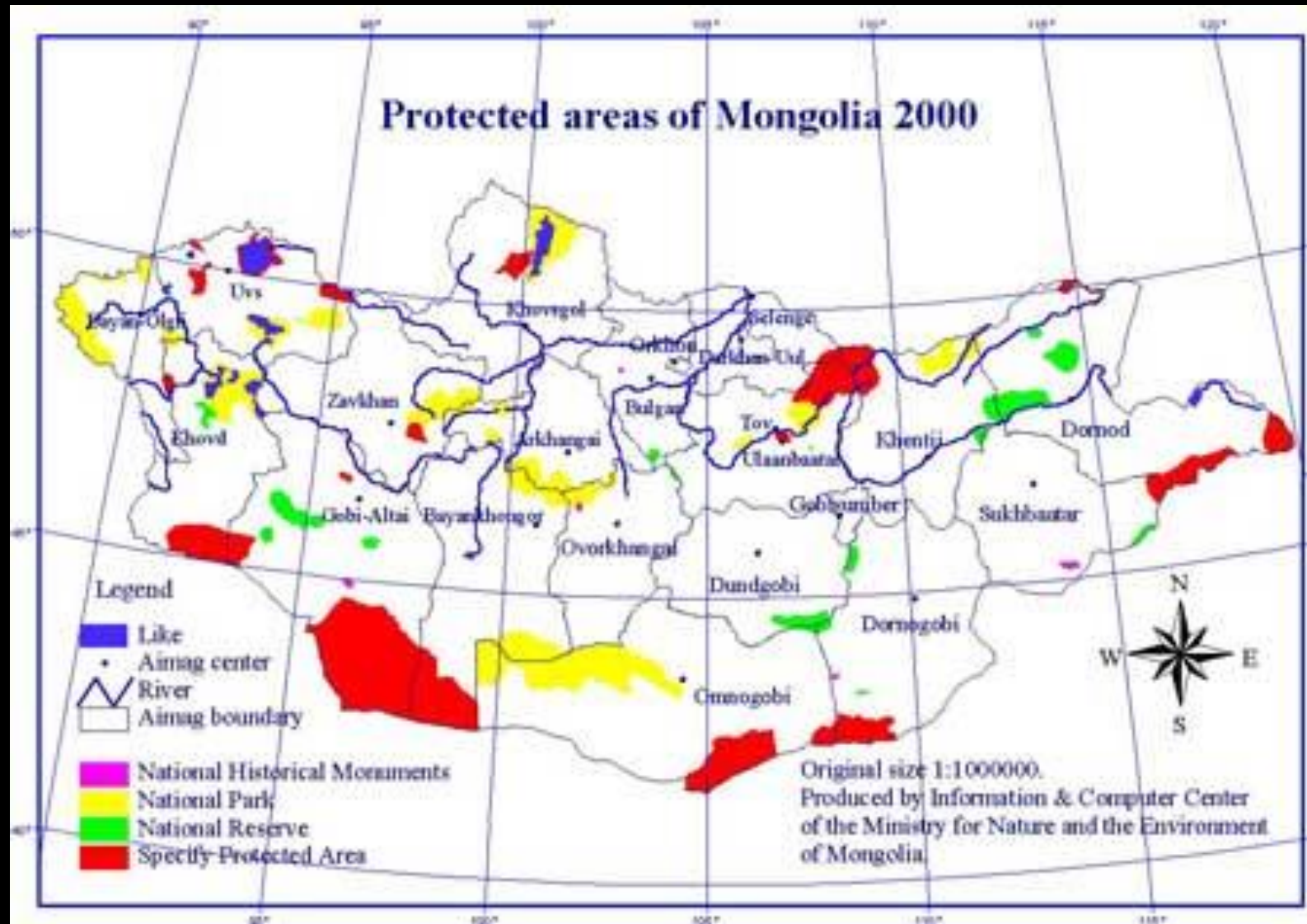
THE SOLUTION: IMPROVED ENFORCEMENT



HUGE LANDSCAPES, MULTIPLE JURISDICTIONS



HUGE LANDSCAPES, MULTIPLE JURISDICTIONS



MULTI-AGENCY TASK FORCES

Mongolian Eastern Steppe Multi-Agency Team: Protected Areas Authority, Environmental Protection Agency, State Inspection Agency, Intelligence Agency, Customs, and Police.



Multi-Agency Task Force:

In Mongolia 75 inspections in one year of protected areas, markets, main roads, railway stations, and border posts.



MULTI-AGENCY TASK FORCES

Hunchun, China: Hunchun Nature Reserve, Hunchun Municipal Forestry Bureau, Hunchun Forestry Public Security, Hunchun Border Guards, Hunchun Border Armed Police Brigade, Hunchun Industrial and Commercial Administration, Hunchun Food and Drug Administration, Hunchun Forestry Investigation Section, Forestry Inspection Section of Hunchun Forestry Bureau.



Multi-Agency Task Force:

In Hunchun, 10 agencies are planning and working together and in the last two years a total of 128 cases have been recorded for illegal hunting and timber extraction. Suspects were apprehended and legal actions are now underway on 111 cases.



Multi-Agency Task Force:

Combine multiple mandates and responsibilities, improve coordination and cooperation, and get the message out on illegal poaching and trafficking – internally and externally.





SMART: improving site-based protection, ensuring accountability and promoting good governance



Spatial Monitoring And Reporting Tool



Targeting the Need

Frontline Conservation Staff
more effective protection

Indigenous and Local People
support community-based management



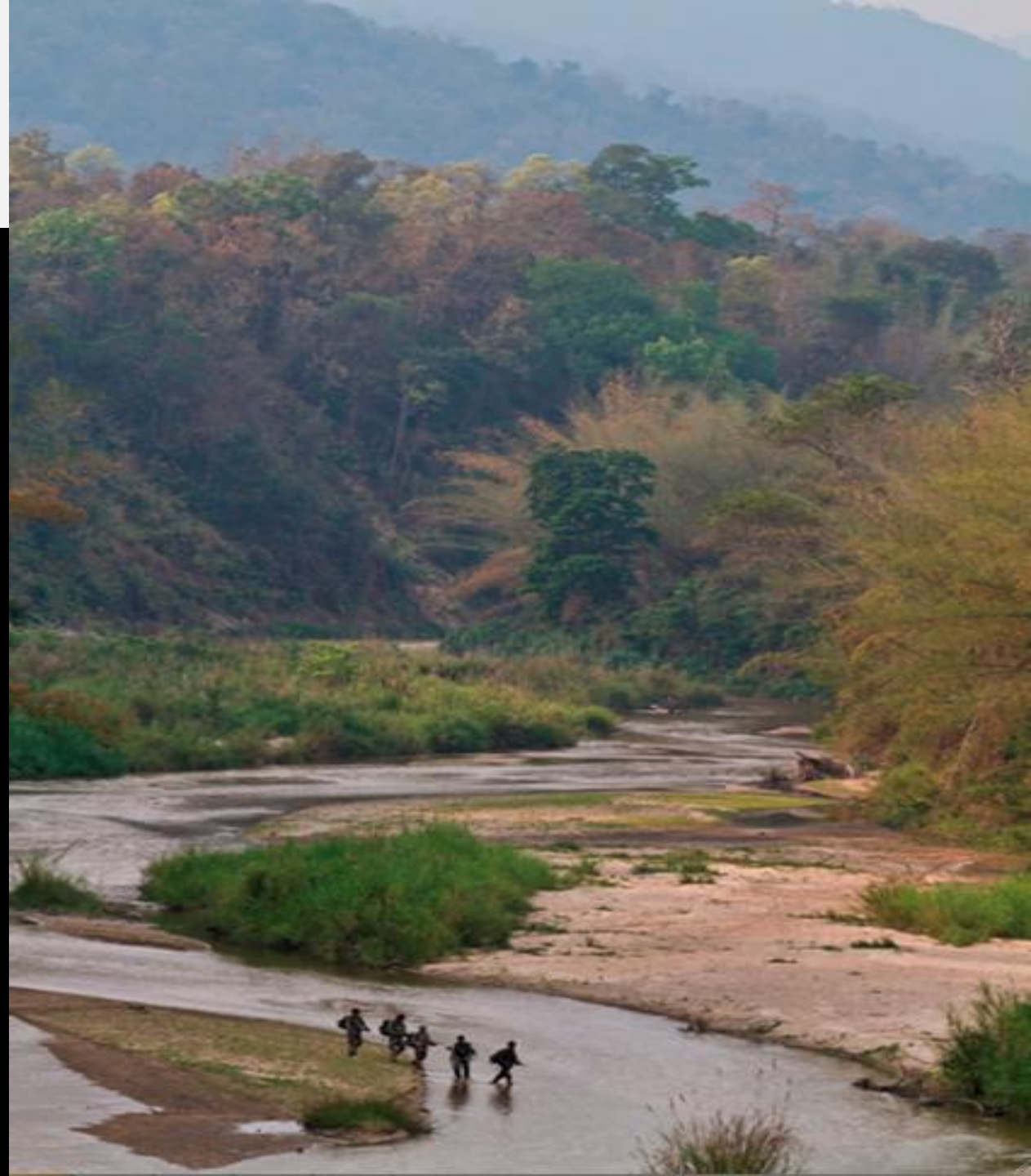
Protected Area Managers
more effective coordination

Government Agency Staff
Monitoring, evaluation, and reporting

The Role of SMART

Information on where
patrols need to go

Information on how
well patrols are
performing



How Does SMART Work At the Local Level?

Data collection



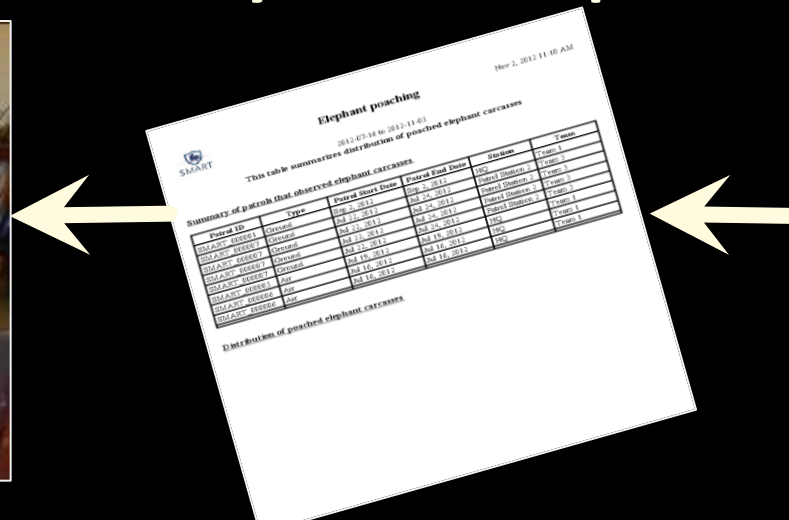
Debriefing



Patrol planning



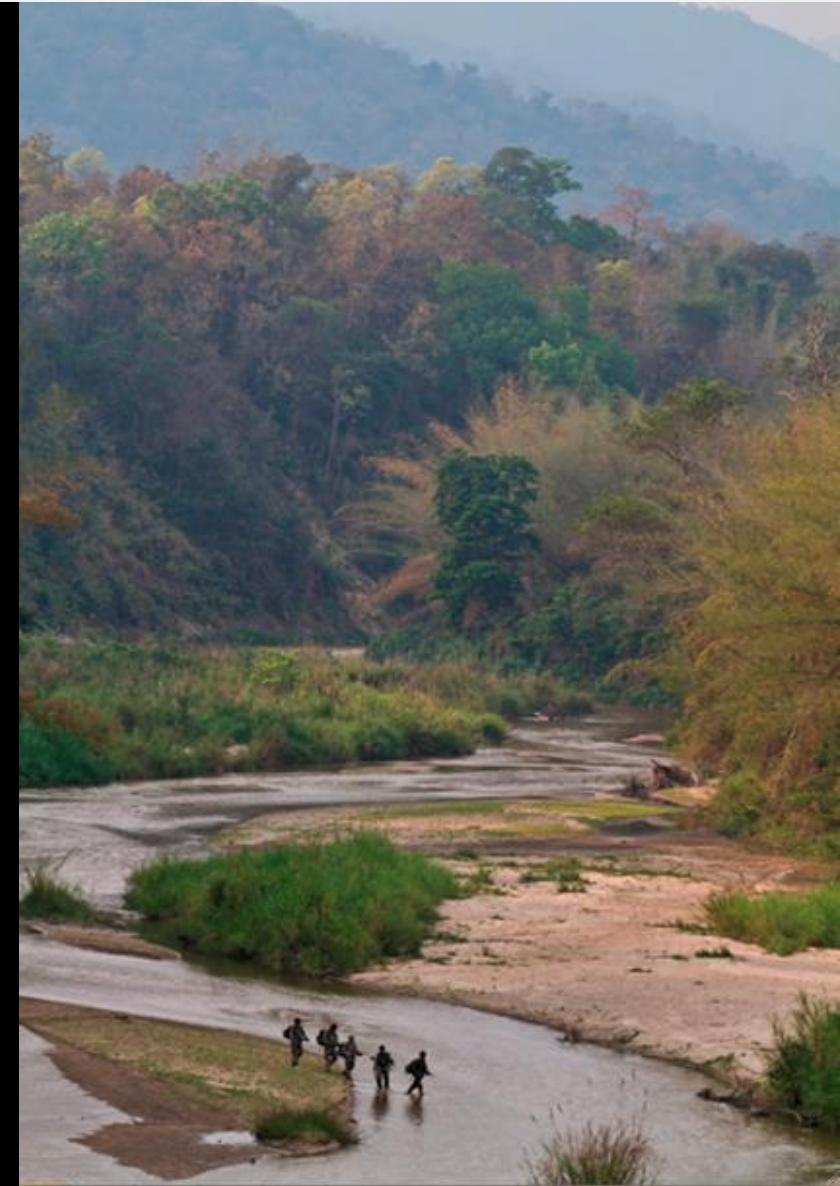
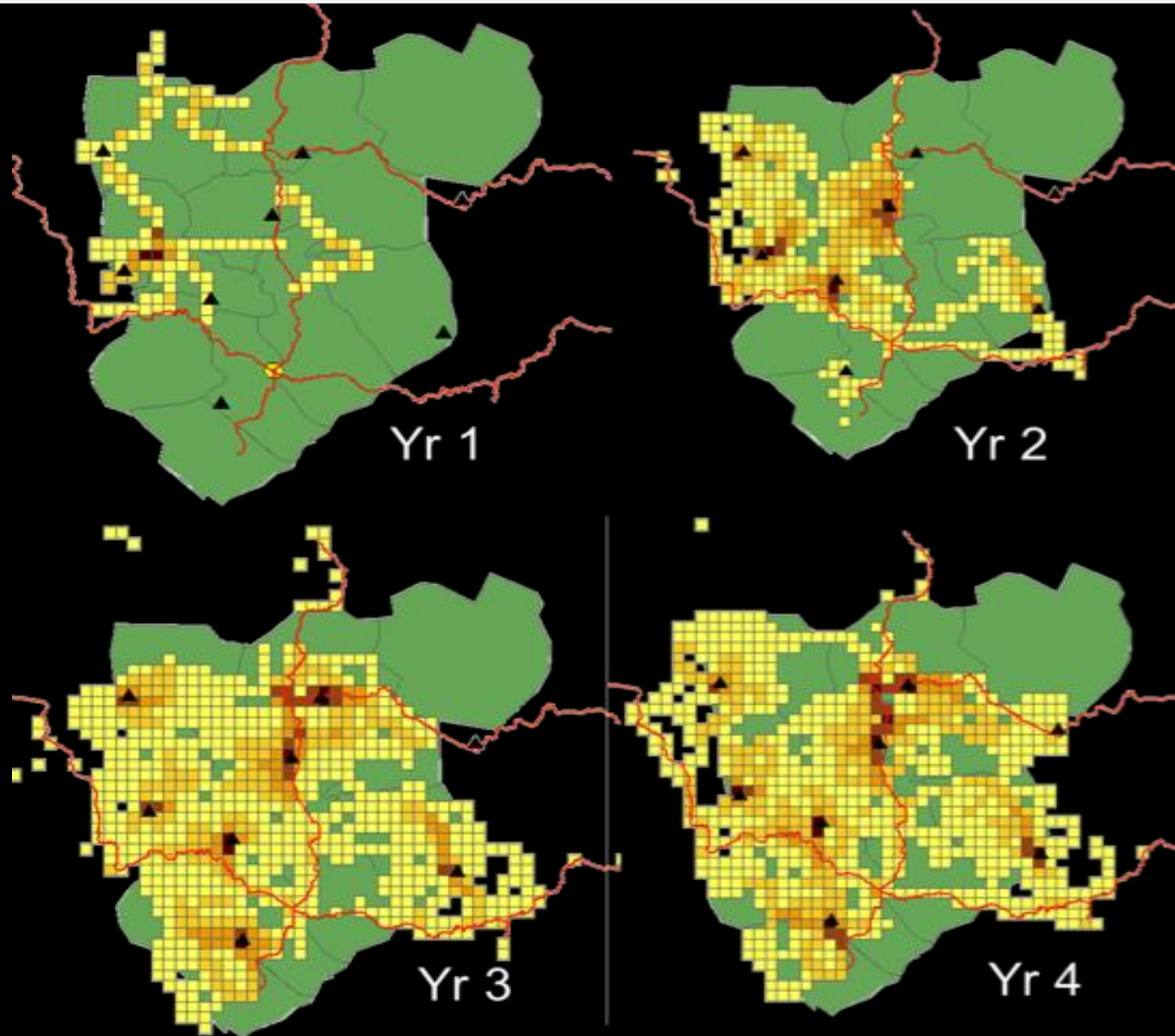
Analysis and Reports



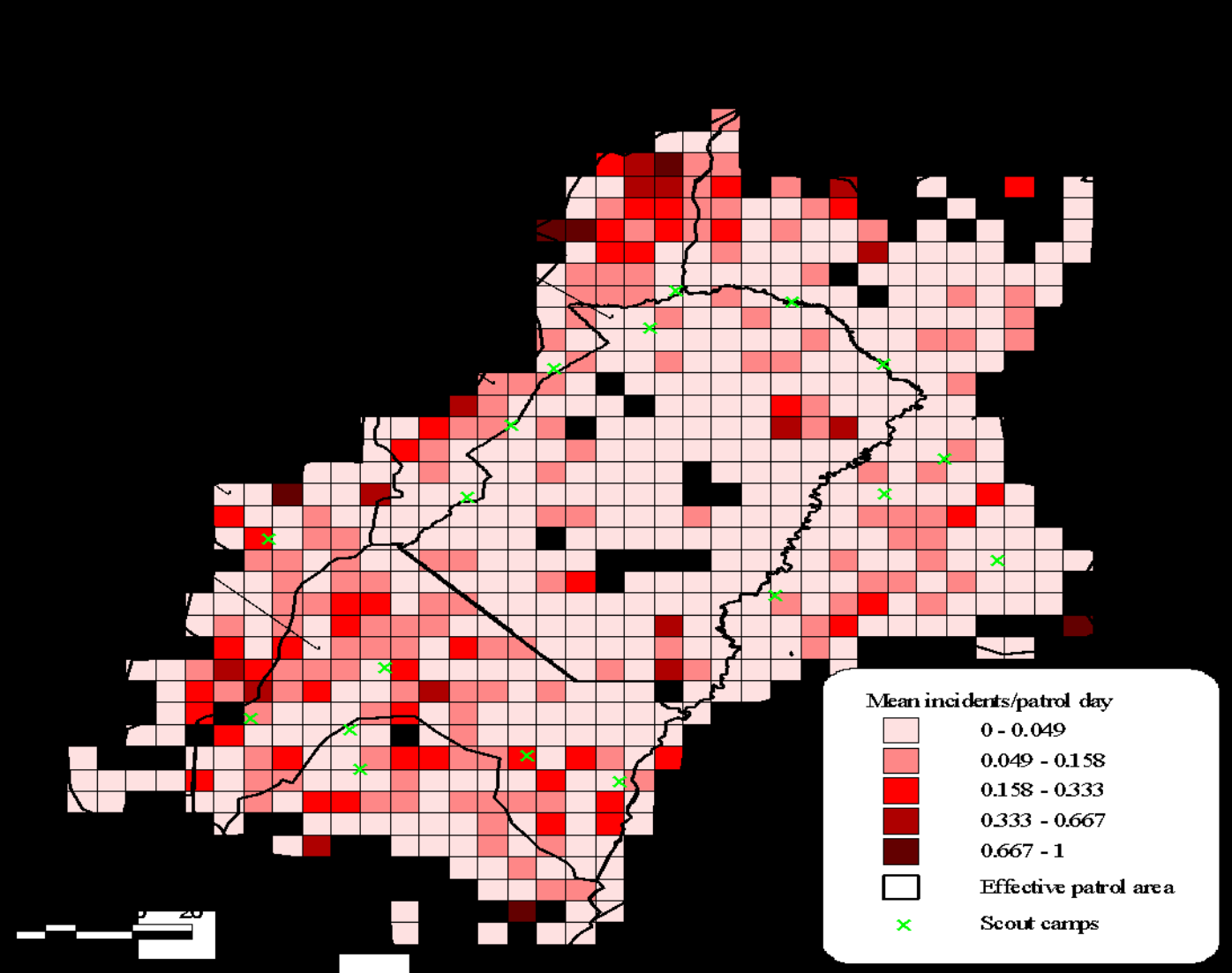
Data entry



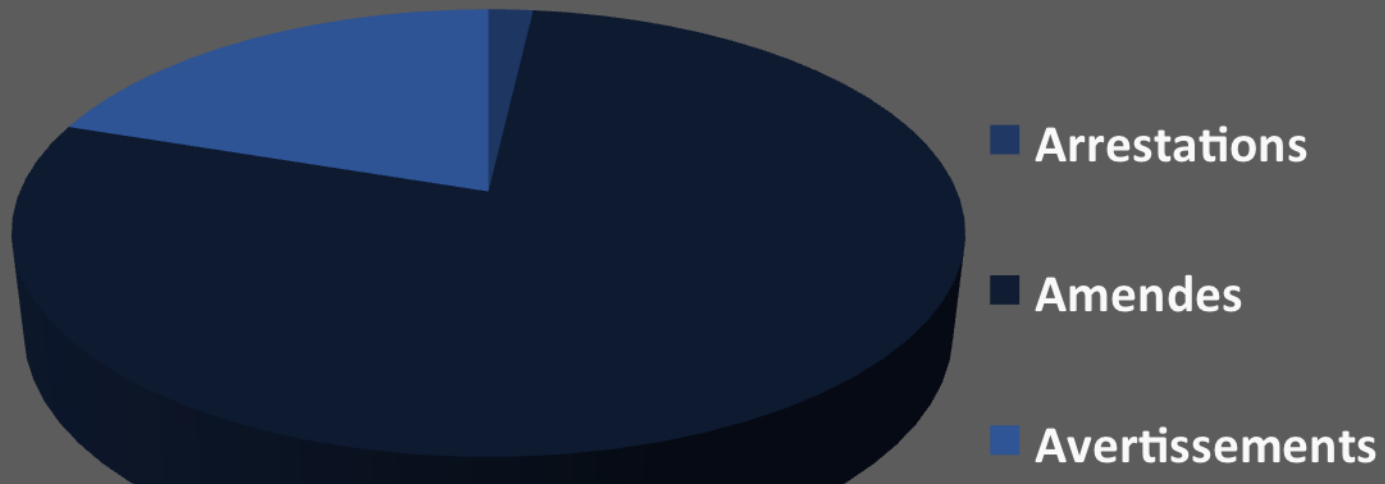
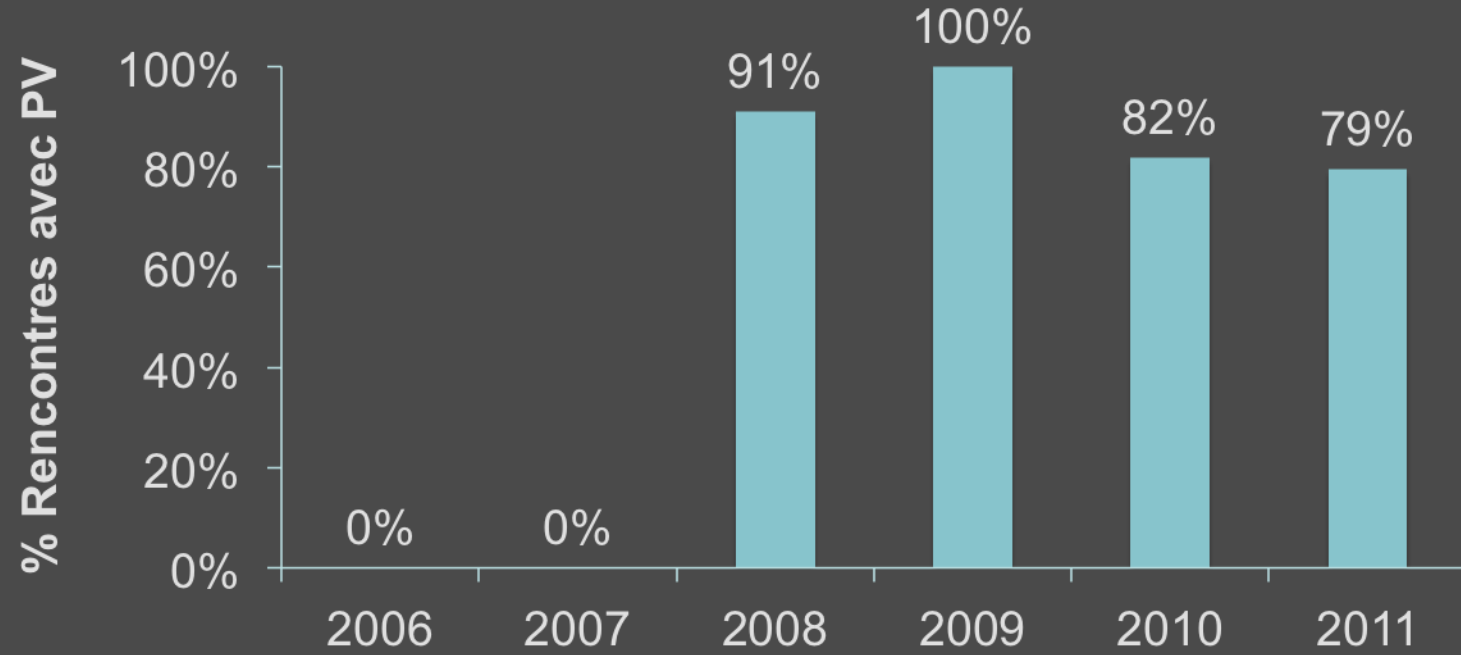
Evaluating Patrol Effort and Coverage



Monitoring Threats: Timely Information to Modify Tactics



Monitoring Enforcement: Performance, Success



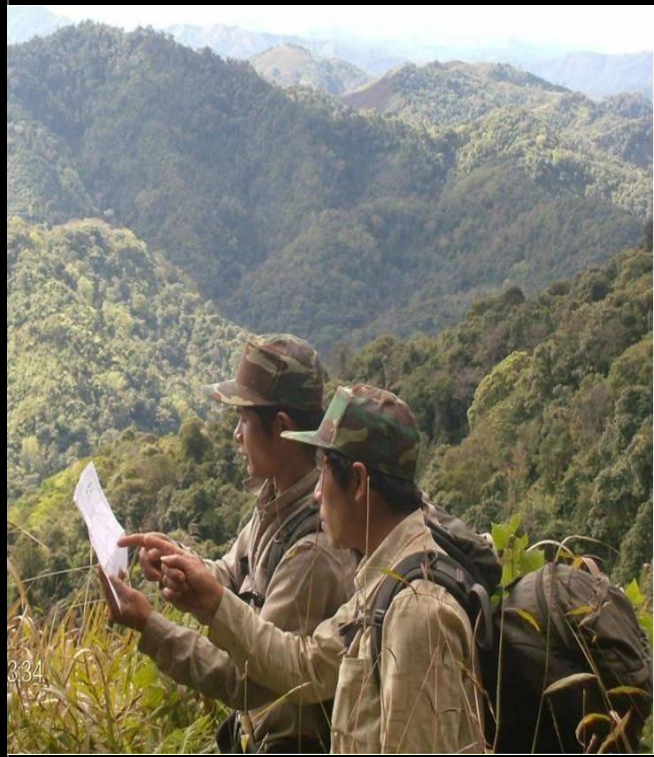
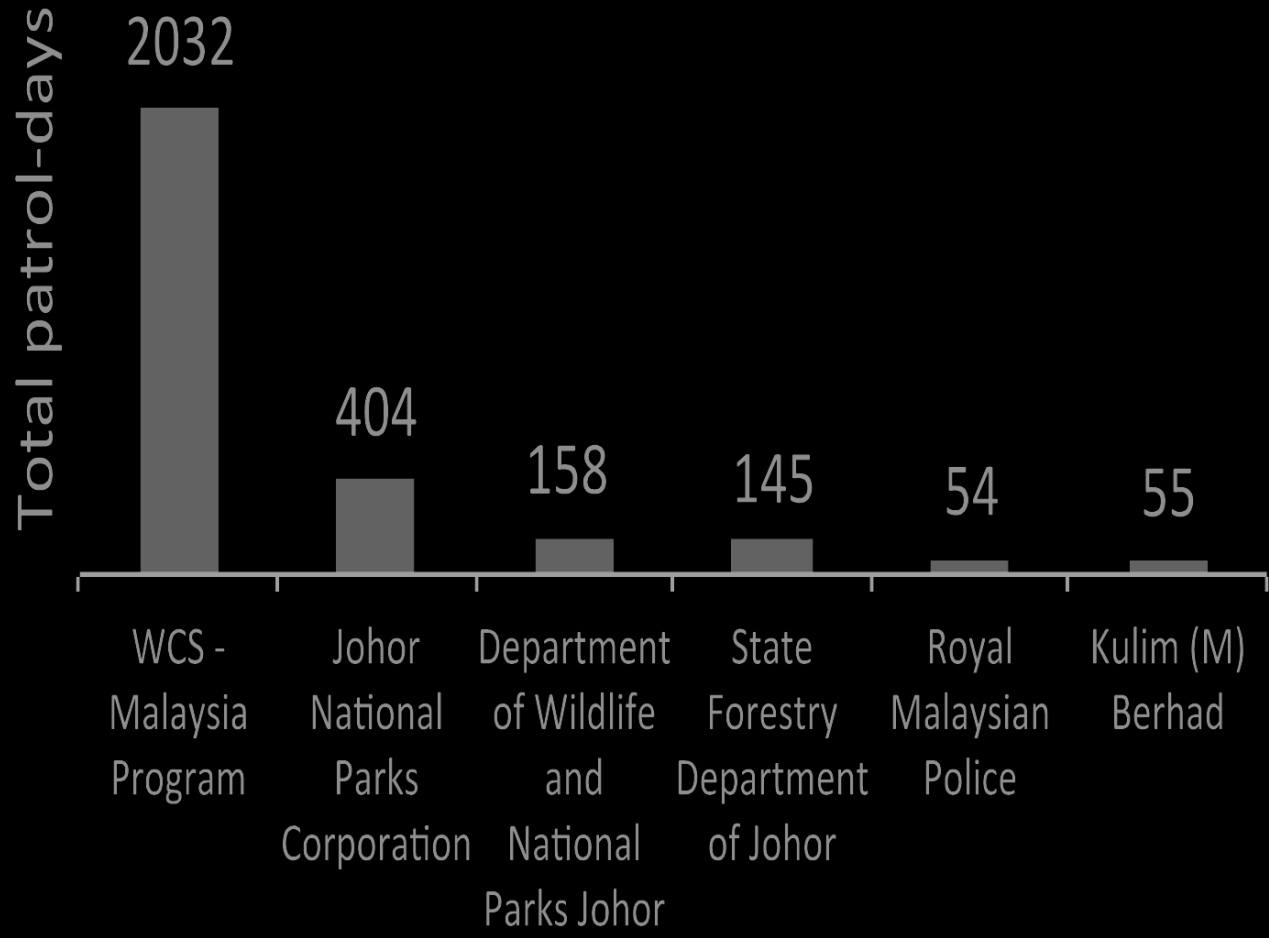
Improving Patrol Management and Coordination: Teamwork, Feedback, Adaptive Planning



Motivating Rangers: Empowered by Progress



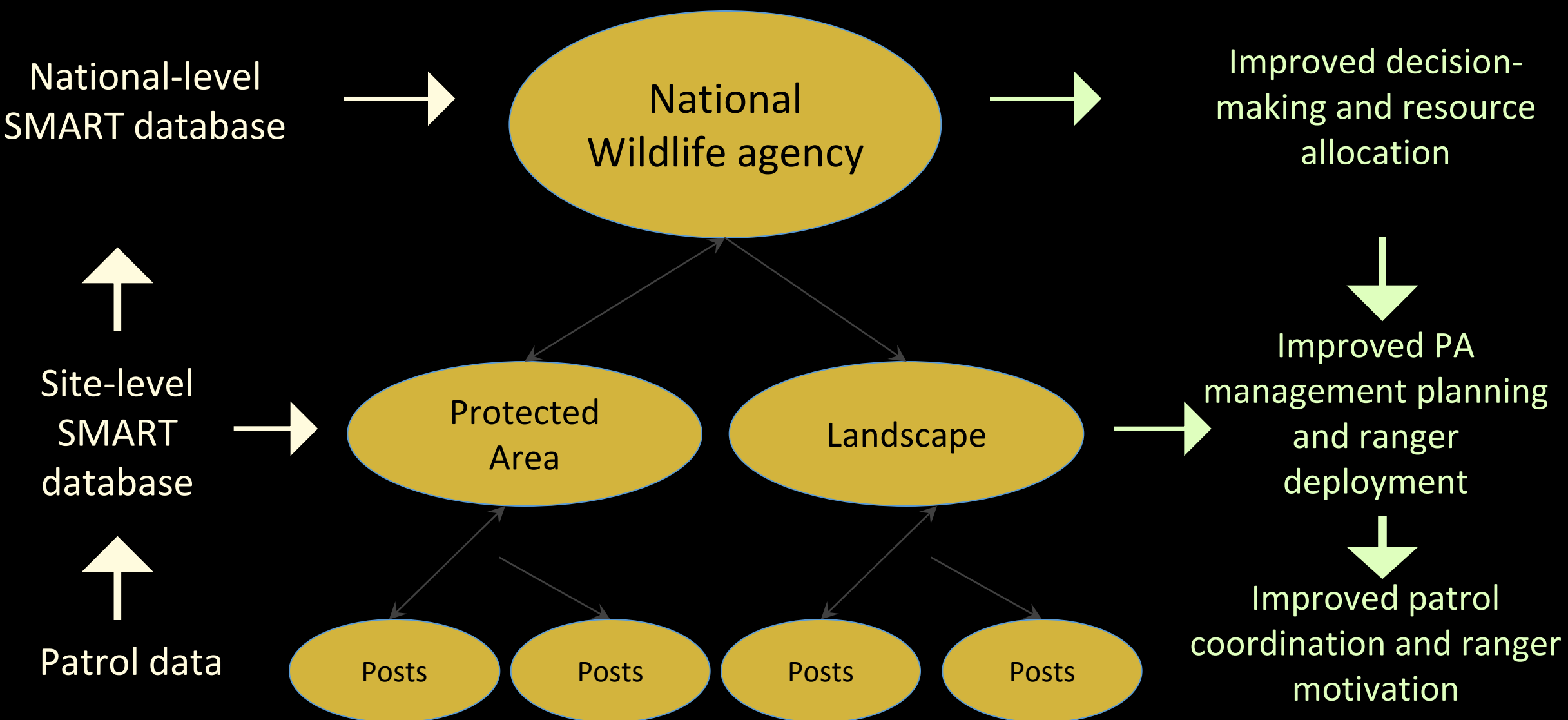
Motivating Rangers: Performance-based Incentives



How Can SMART Help You? SMART Applications

- Improves patrol quality at site level
- Promotes accountability and good governance at local and national level
- Measures effectiveness and progress to national targets
- Standardizes reporting of global indicators on poaching and other threats

SMART Works Nationally



Where Are We Now?



- **117** implementation sites in **27** countries worldwide
- National governments have adopted SMART as a standard:
 - Colombia: adopted SMART across ~50 PAs for 2014
 - Thailand: training for use across 35 PAs
 - Gabon: adopted SMART across entire PA network of 13 NPs and 2 reserves



The SMART Partnership Today



FRANKFURT
ZOOLOGICAL
SOCIETY



LIVING CONSERVATION

Members



LIVING CONSERVATION



Supporters





WHY SMART?

Traditional tools, technologies and resources are not stemming the illegal killing and trading of endangered species. As a result threatened and highly valued biodiversity such as tigers, rhinos, elephants, great apes and their habitats are being lost.

[Learn More](#)

© JOHN GOODRICH / WCS



What is SMART?



Learn more about the SMART approach to improving conservation effectiveness

Why SMART?



Learn more about the need for SMART and why its unique

How can SMART work for you?



Learn how SMART works in the field and how it can benefit you or your organization

SMART News

SMART partners training of trainers workshop scheduled for 11th – 15th September, 2012 in Pretoria, South Africa.

RESOURCES

Download information about SMART here: [Smart Users](#) and [Smart Donors](#)

Thank You

Peter Zahler – Deputy Director, Asia Program, Wildlife Conservation Society – pzahler@wcs.org